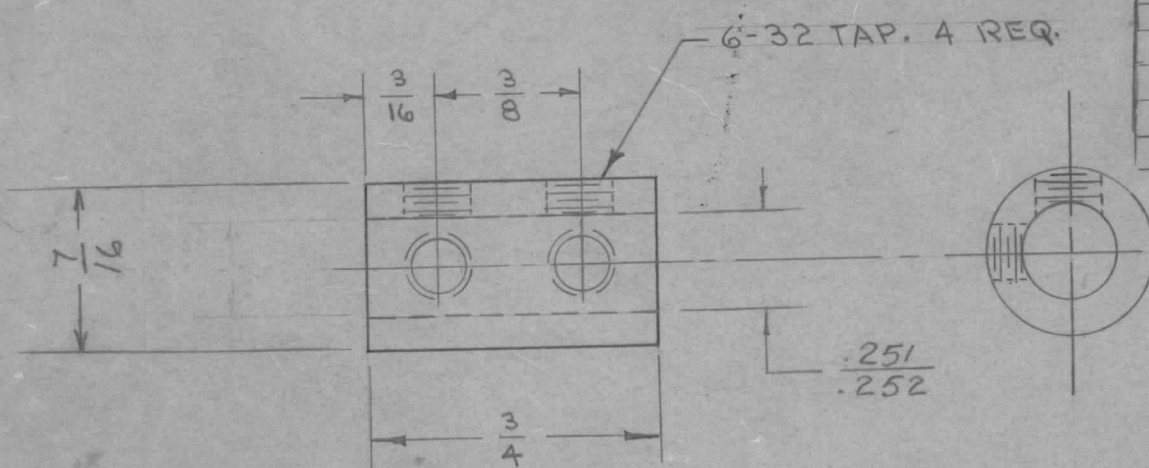


IF IT IS FOUND DESIRABLE TO CHANGE ANY TOLERANCE OR OTHER DETAIL SPECIFIED ON THIS DRAWING NOTIFY THE PURCHASER PROMPTLY.

MAXIMUM ALLOWABLE TOLERANCES HAVE BEEN DETERMINED AND DEVIATIONS WILL BE CAUSE FOR REJECTION. REMOVE ALL BURRS AND SHARP EDGES

MC-102 G

REQ'D. PER UNIT	USED ON			
	MODEL	PROJECT NO.	ASS'Y. NO.	DATE
1	PMO-1	20		9-21-54
	DMK-4	140	A-153	9-20-54
1	PMO-2			9-21-54
1	RTF			2-3-56
1	SBE-2			5-5-58
3	GPR-90			5-12-58
1	SBE-3		AO-101	11-25-59
1	GPR-92		FX-177	10/29/62



NOTICE TO PERSONS RECEIVING THIS DRAWING

THE TECHNICAL MATERIEL CORPORATION claims proprietary right in the material disclosed hereon. This drawing is issued in confidence for engineering information only and may not be reproduced or used to manufacture anything shown hereon without permission from THE TECHNICAL MATERIEL CORPORATION to the user. This drawing is loaned for mutual assistance and is subject to recall at any time.

Property of:

THE TECHNICAL MATERIEL CORPORATION  
MAMARONECK, NEW YORK

S401-89 #4402  
S401-8 #138

ISSUE	ITEM	CHANGED FROM	DATE	CN. NO.	DRAFTS	CHECKER	ENG. APP.
G		#138 WAS #10GGAX S135 WAS S105 (FINISH)	1-24-66	15576	HLA	QCB	RC
F	1	VENDOR CODE ADDED	9/25/63	10021	DD	Saz	RC
E	1	NOTE DELETED	12-18-62	7807	MI	MI	RC
D	1	Ref. Was No. 120	8/3/57	4	fc.	fc.	RC
C	1	TOL. DIM. WAS 1/4	10/2/58	3	13	fc.	RC
B	1	NOTE ADDED	11/22/54	2	PB	fc.	RC
A	1	REF. ADDED	7/15/53	1	fc.	fc.	RC

REQ.	ITEM	PART NO.	DESCRIPTION	SYMBOL
			THE TECHNICAL MATERIEL CORP. MAMARONECK, NEW YORK	
			COUPLING, SWITCH SHAFT	
			C.O.D. 9-15-54	
			DRAWN 914.C	
			ELEC. DES. APP.	
			MECH. DES. APP.	
			CHECKED	
			FINAL APPROVAL	
			S135-NICKEL PLATE	
			FINISH & SPEC. NO.	
			MC-102	G

TOLERANCES

SCALE TWICE SIZE

ALL OTHERS  
DEC. DIM. ±  
FRAC. DIM. ± 1/64  
ANGULAR DIM. ±

DRILL, PUNCH, COMMERCIAL STOCK  
SIZES AND MANUFACTURERS  
TOLERANCES ARE NOT INCLUDED.

IF IT IS FOUND DESIRABLE TO CHANGE ANY TOLERANCE OR OTHER DETAIL SPECIFIED ON THIS DRAWING NOTIFY THE PURCHASER PROMPTLY.

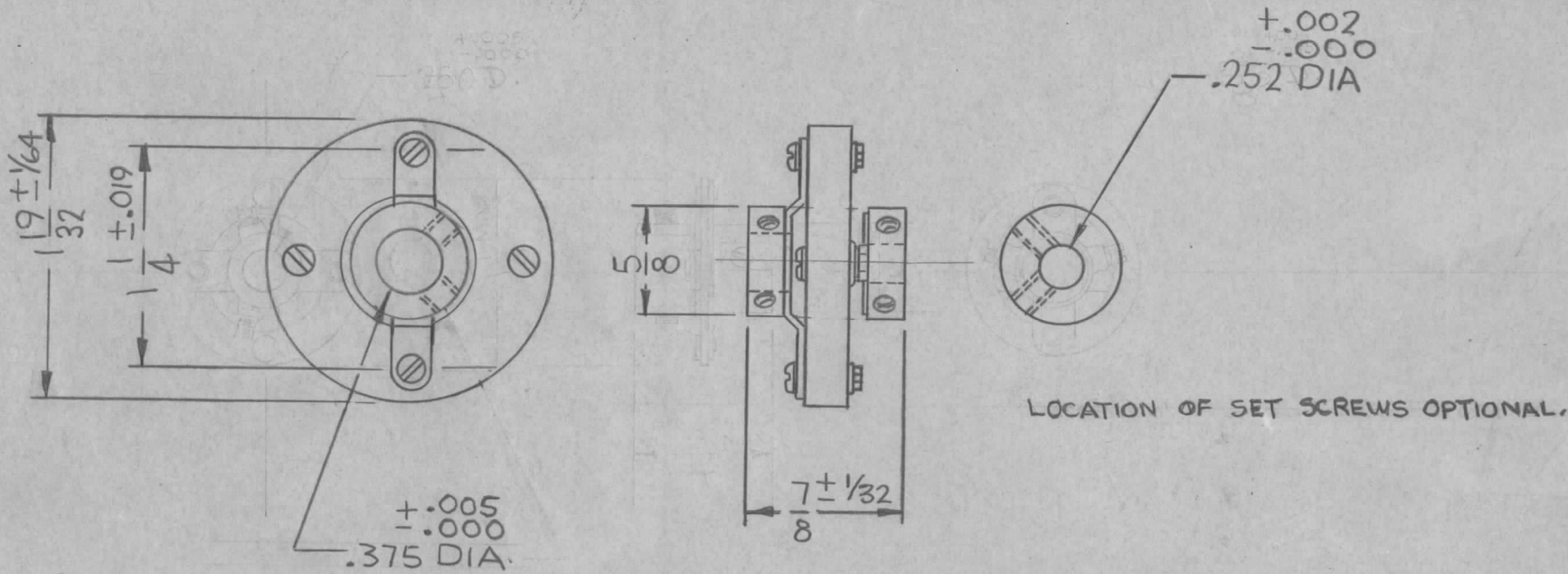
# STANDARD DRAWING

MC-103 C

MAXIMUM ALLOWABLE TOLERANCES HAVE BEEN DETERMINED AND DEVIATIONS WILL BE CAUSE FOR REJECTION.  
REMOVE ALL BURRS AND SHARP EDGES

REQ PER UNIT	USED ON			
	MODEL	PROJECT NO.	ASS'Y. NO.	DATE
1	VOX			
1	XFK		A-684	
1	CMO			

TMC NO.	MFG. P/N
MC-103-1	SA25-2



REF: 5401-358

REQ.	ITEM	PART NO.	DESCRIPTION	SYMBOL					
STOCK SIZE			THE TECHNICAL MATERIEL CORP. MAMARONECK, NEW YORK						
C	DRWG REDRWN & REL	b.8.87 18265 WFO	COUPLING, FLEXIBLE						
B	ADDED 5401-358 & TOL ON DIMS., DELE. OAK MFG CO. CHG'D 7/16 TO 1/2 REF.	8-3-66 16707 RME							
A	DRAWING ADDED	6/11/54 1 C.D.D.							
ISSUE	ITEM	CHANGED FROM	DATE	CN. NO.	DRAFTS	CHECKER	ENG. APP.		
TOLERANCES		SCALE							
ALL OTHERS	DEC. DIM. $\pm$ FRAC. DIM. $\pm$ ANGULAR DIM. $\pm$	DRILL, PUNCH, COMMERCIAL STOCK SIZES AND MANUFACTURERS TOLERANCES ARE NOT INCLUDED.							
HEAT TREAT. SPEC.			CHECKED		FINAL APPROVAL				
FINISH & SPEC. NO.					MC-103 C				

IF IT IS FOUND DESIRABLE TO CHANGE ANY TOLERANCE OR OTHER DETAIL SPECIFIED ON THIS DRAWING NOTIFY THE PURCHASER PROMPTLY.

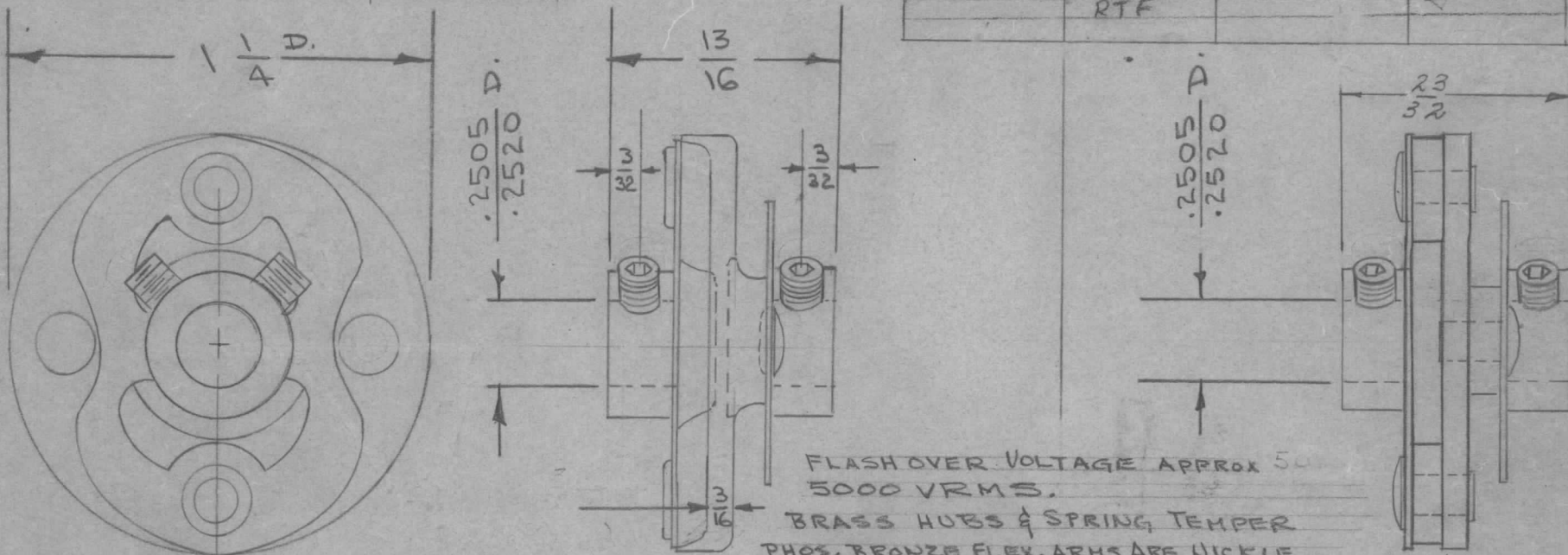
MC-104 B

MAXIMUM ALLOWABLE TOLERANCES HAVE BEEN DETERMINED AND DEVIATIONS WILL BE CAUSE FOR REJECTION.  
REMOVE ALL BURRS AND SHARP EDGES

USED ON

AMT. PER UNIT	MODEL	PROJECT NO.	ASS'Y. NO.	DATE
2	XFK		A-679 A-683	
	VOX			
	TAC-1			
1	GPR-90 RTF			5-12-58 6-23-58

TMC NO	CAT. NO	MATERIAL
MC-104-1	FC-4G-S	STEATITE
MC-104-2	FNC-4G-S	BRASS



INSULATED TYPE  
FC-4G-S

REF: HAMMARLUND MFG. CO

NON-INSULATED TYPE  
FNC-4G-S

DIM. FOR REF. ONLY.

NOTE - TO BE SUPPLIED BY MFG, -  
FOUR HEADLESS SET SCREWS, 6-32 X 3/16 LONG.  
(HEX SOCKET HEAD) TMC EQUIV. AN565D6H3

ISSUE	ITEM	CHANGED FROM	DATE	CN. NO.	DRAFTS	CHECKER	ENG. APP.
B	1	FLASH OVER NOTE ADDED	11/9/59		file		
A	1	SET SCREW CHSD/NOTE ADDED	1/4/57	1	LG	JHO	

REQ.	ITEM	PART NO.	DESCRIPTION	SYMBOL
			THE TECHNICAL MATERIEL CORP. MAMARONECK, NEW YORK	
		STOCK SIZE		
		MATERIAL	WEIGHT PER PC.	
		TYPE & TEMPER		
		HEAT TREAT. SPEC.		
		FINISH & SPEC. NO.		

COUPLING, FLEXIBLE

DATE 1-16-53. ORB WOE  
DRAWN ELEC. DES. APP. MECH. DES. APP.  
16-1-28-54 ORB WOE  
CHECKED FINAL APPROVAL

MC-104 B

TOLERANCES	SCALE
ALL OTHERS DEC. DIM. ± FRAC. DIM. ± ANGULAR DIM. ±	DRILL, PUNCH, COMMERCIAL STOCK SIZES AND MANUFACTURERS TOLERANCES ARE NOT INCLUDED.



IF IT IS FOUND DESIRABLE TO CHANGE ANY TOLERANCE OR OTHER DETAIL SPECIFIED ON THIS DRAWING NOTIFY THE PURCHASER PROMPTLY.

MC-106 A

MAXIMUM ALLOWABLE TOLERANCES HAVE BEEN DETERMINED AND DEVIATIONS WILL BE CAUSE FOR REJECTION. REMOVE ALL BURRS AND SHARP EDGES

REQ. PER UNIT

USED ON

MODEL

PROJECT NO.

ASS'Y. NO.

DATE

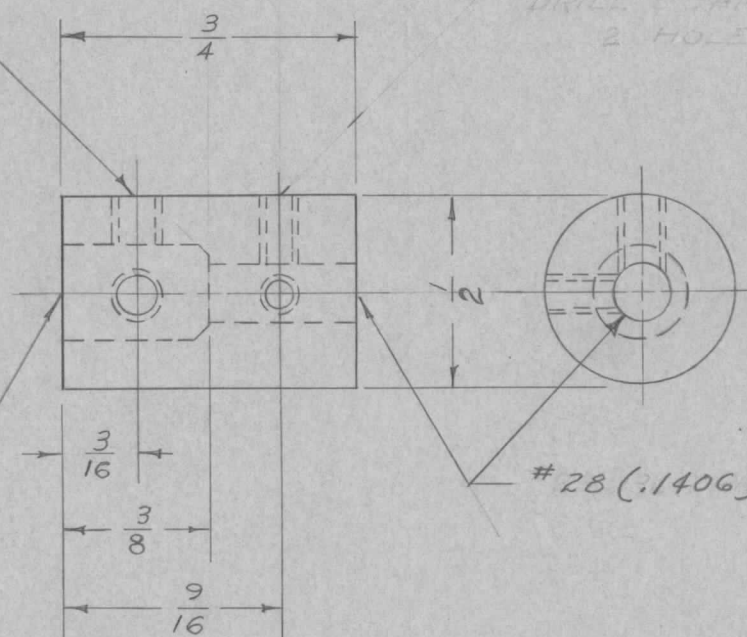
2 1005 8-1-52

DRILL & TAP 6-32  
4 HOLES

DRILL & TAP 1-20  
2 HOLES

# F(.257) DRILL

# 28 (.1406) DRILL



REQ.	ITEM	PART NO.	DESCRIPTION	SYMBOL
	1/2	ROD	THE TECHNICAL MATERIEL CORP.	
		STOCK SIZE	MAMARONECK. NEW YORK	
		BRASS	DRIVE SHAFT COUPLING	
		MATERIAL	FREE TURNING	
		WEIGHT PER PC.		
			TYPE & TEMPER	
			HEAT TREAT. SPEC.	
			FINISH & SPEC. NO.	

ISSUE	ITEM	CHANGED FROM	DATE	CN. NO.	DRAFTS	CHECKER	ENG. APP.
A	3	(2) 6-32 WAS (2) 6-32 - 2 WERE # F WAS 1/4 4-40 TAP # 28 WAS # 29 ON # 29 DRILL	9/9/58	1	auc		
#	#	REDRAWN NO CHANGE	8-23-55	#	oss	we	

TOLERANCES		SCALE
ALL OTHERS	DEC. DIM. ± .0015 FRAC. DIM. ± 1/64 ANGULAR DIM. ±	DRILL, PUNCH, COMMERCIAL STOCK SIZES AND MANUFACTURERS TOLERANCES ARE NOT INCLUDED.

CHECKED	FINAL APPROVAL
8/1/55	MC-106 A

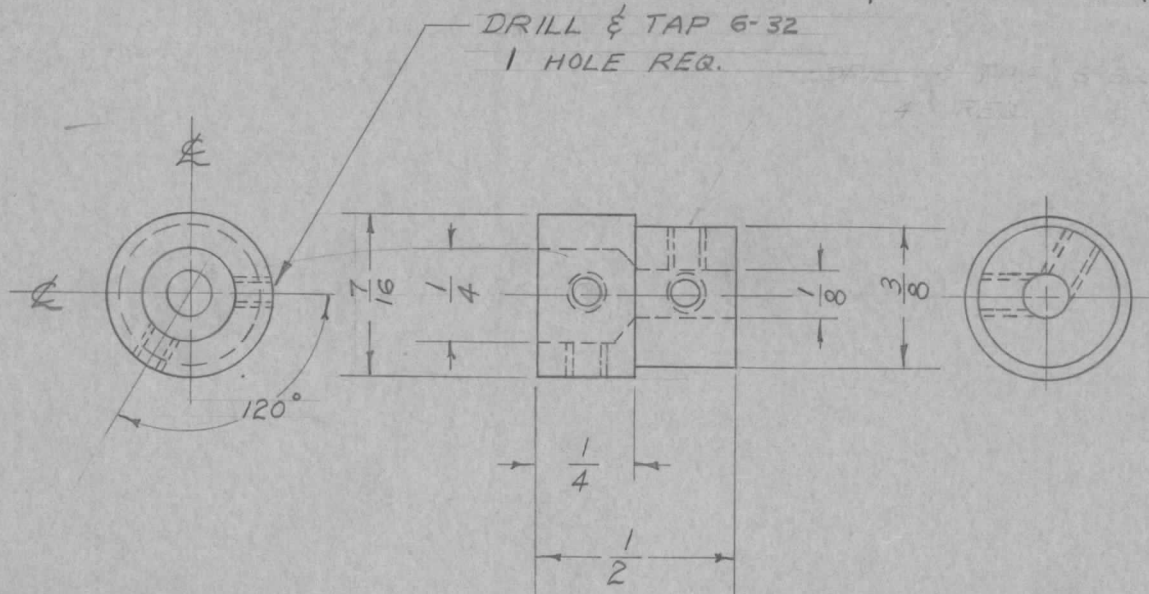


IF IT IS FOUND DESIRABLE TO CHANGE ANY TOLERANCE OR OTHER DETAIL SPECIFIED ON THIS DRAWING NOTIFY THE PURCHASER PROMPTLY.

MC-107 C

MAXIMUM ALLOWABLE TOLERANCES HAVE BEEN DETERMINED AND DEVIATIONS WILL BE CAUSE FOR REJECTION. REMOVE ALL BURRS AND SHARP EDGES

REQ. PER UNIT	USED ON			
	MODEL	PROJECT NO.	ASS'Y. NO.	DATE
2	VOX-1		A-427	5-19-52
2	PMO-1			7-23-53
2	RTF			2-3-56
1	CMD-1 & 2			6-20-60



MATERIAL: END COUPLING FROM NATIONAL TX-11 COUPLING WITH ONE TAPPED HOLE ADDED AS SHOWN

ISSUE	ITEM	CHANGED FROM	DATE	CN. NO.	DRAFTS	CHECKER	ENG. APP.
C	1	NOTE DELETED	12-18-62	7807		W.D.F.	
B	2	FINISH & SPEC. NO ADDED	2-19-62	6387	G.S.		
	1	TYPE & TEMPER ADDED					
A	1	TITLE was (MOD. OF TX-11)	6-20-60				
#	#	REDRAWN NO CHANGE	8-3-55	#	13		

REQ.	ITEM	PART NO.	DESCRIPTION	SYMBOL
			THE TECHNICAL MATERIEL CORP.	
			MAMARONECK. NEW YORK	
			COUPLER, REDUCER	
		STOCK SIZE	1/4 TO 1/8	
		MATERIAL	BRASS 1/2 H	
		WEIGHT PER PC.	18 8-31-55	
		TYPE & TEMPER		
		HEAT TREAT. SPEC.		
		FINISH & SPEC. NO.	BRIGHT NICKEL PLATE .003 THK	
			DRAWN	ELEC. DES. APP.
			CHECKED	FINAL APPROVAL
				MC-107 C

TOLERANCES		SCALE
ALL OTHERS	DEC. DIM. ± FRAC. DIM. ± ANGULAR DIM. ±	DRILL, PUNCH, COMMERCIAL STOCK SIZES AND MANUFACTURERS TOLERANCES ARE NOT INCLUDED.

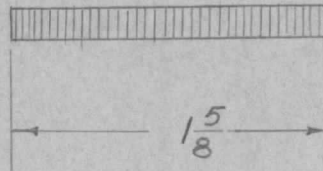


IF IT IS FOUND DESIRABLE TO CHANGE ANY TOLERANCE OR OTHER DETAIL SPECIFIED ON THIS DRAWING NOTIFY THE PURCHASER PROMPTLY.

MC-109 A

MAXIMUM ALLOWABLE TOLERANCES HAVE BEEN DETERMINED AND DEVIATIONS WILL BE CAUSE FOR REJECTION. REMOVE ALL BURRS AND SHARP EDGES

REQ. PER UNIT	USED ON			
	MODEL	PROJECT NO.	ASSY. NO.	DATE
1	VOX		A-784	2-4-52



REF: SS. WHITE CO.

REQ.	ITEM	PART NO.	DESCRIPTION	SYMBOL
		.072 DIA.	THE TECHNICAL MATERIEL CORP. MAMARONECK. NEW YORK	
		STOCK SIZE		
	FLEXIBLE CABLE	#	FLEXIBLE SHAFT	
	MATERIAL	WEIGHT PER PC.	VOX	
		PHOSPHOR BRONZE		
		TYPE & TEMPER	AB-8-24-55	
			DRAWN	ELEC. DES. APP. MECH. DES. APP.
			CSO 2/25/52	
		HEAT TREAT. SPEC.	CHECKED	FINAL APPROVAL
				MC-109 A
		FINISH & SPEC. NO.		

#	#	REASON	DATE	BY	CHKD	APP
		REDRAWN NO CHANGE	5-28-52	#	1/5	CSO WPC

TOLERANCES		SCALE
ALL OTHERS	DEC. DIM. ± FRAC. DIM. ± ANGULAR DIM. ±	DRILL, PUNCH, COMMERCIAL STOCK SIZES AND MANUFACTURERS TOLERANCES ARE NOT INCLUDED.



IF IT IS FOUND DESIRABLE TO CHANGE ANY TOLERANCE OR OTHER DETAIL SPECIFIED ON THIS DRAWING NOTIFY THE PURCHASER PROMPTLY.

MC-110 B

MAXIMUM ALLOWABLE TOLERANCES HAVE BEEN DETERMINED AND DEVIATIONS WILL BE CAUSE FOR REJECTION. REMOVE ALL BURRS AND SHARP EDGES

REQ. PER UNIT

USED ON

MODEL

PROJECT NO.

ASS'Y. NO.

DATE

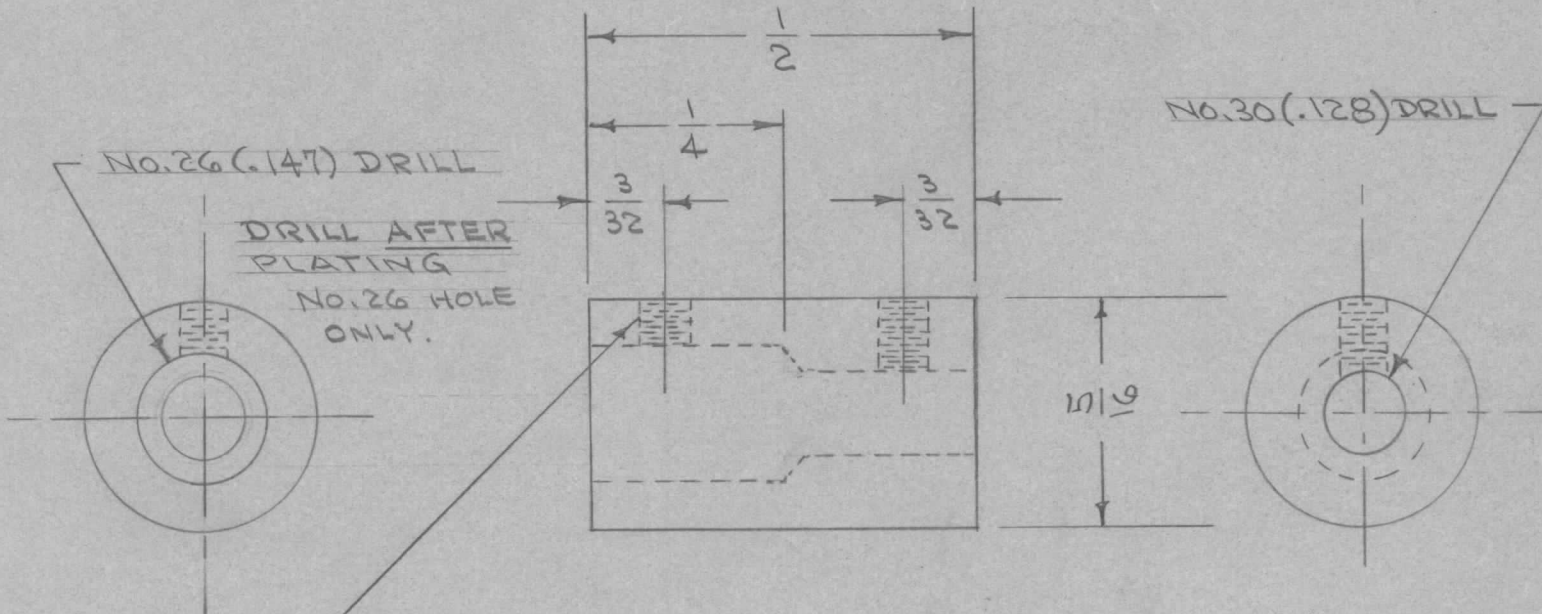
1

VOX

101

A-424

3/30/54



DRILL & TAP 4-40 2 REQ.

REQ.	ITEM	PART NO.	DESCRIPTION	SYMBOL
		5/16 D.	THE TECHNICAL MATERIEL CORP.	
		STOCK SIZE	MAMARONECK. NEW YORK	
		BRASS	CENTER COUPLING	
		MATERIAL	VOX	
		WEIGHT PER PC.		
		FREE TURNING		
		TYPE & TEMPER		
		HEAT TREAT. SPEC.		
		S-105 CADMIUM PLATE		
		FINISH & SPEC. NO.		

ISSUE	ITEM	CHANGED FROM	DATE	CN. NO.	DRAFTS	CHECKER	ENG. APP.
B	2	1/2 WAS 3/8	6/1/54	2	C.D.D.	JABE	
	1	REDRAWN - HOLE SIZES CHANGED	9/1/54	2	C.D.D.	JABE	WJZ

TOLERANCES	SCALE	DRILL, PUNCH, COMMERCIAL STOCK SIZES AND MANUFACTURERS TOLERANCES ARE NOT INCLUDED.
ALL OTHERS DEC. DIM. ± FRAC. DIM. ± 1/64 ANGULAR DIM. ±	1/16	



IF IT IS FOUND DESIRABLE TO CHANGE ANY TOLERANCE OR OTHER DETAIL SPECIFIED ON THIS DRAWING NOTIFY THE PURCHASER PROMPTLY.

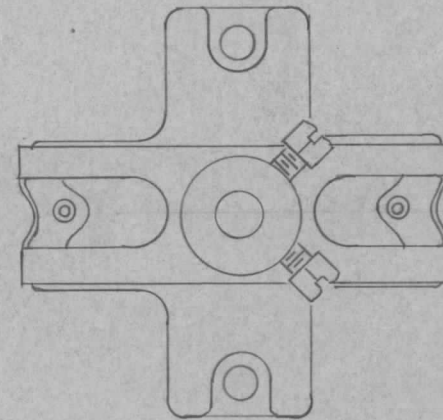
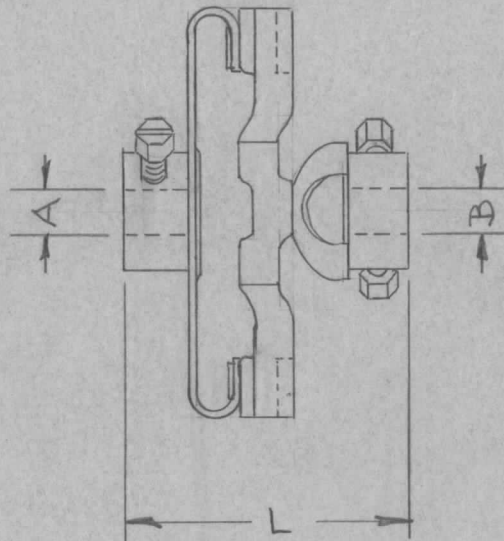
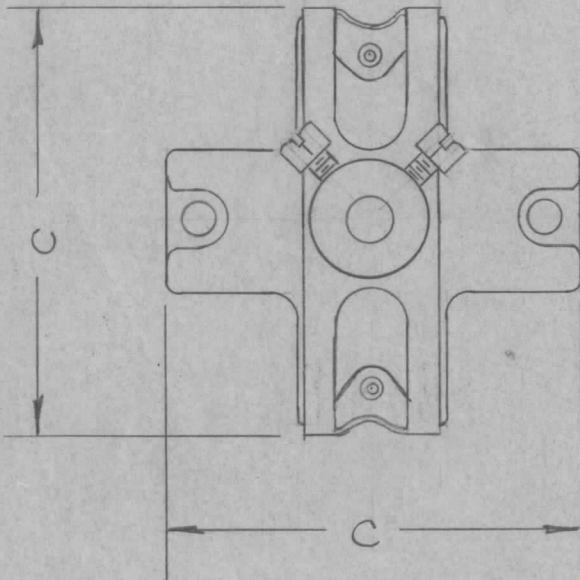
MC-112

MAXIMUM ALLOWABLE TOLERANCES HAVE BEEN DETERMINED AND DEVIATIONS WILL BE CAUSE FOR REJECTION.  
REMOVE ALL BURRS AND SHARP EDGES

USED ON

TMC NO	JOHNSON CAT. NO	MODULATED PEAK VOLT.	A	B	C	L
MC-112-1	104-251A	5,000	1/4	1/4	2 1/8	1 15/32

MODEL	PROJECT NO.	ASS'Y. NO.	DATE
TAC-1	132		7-24-53



REF: E.F. JOHNSON CO.

REQ.	ITEM	PART NO.	DESCRIPTION	SYMBOL
		//	THE TECHNICAL MATERIEL CORP. MAMARONECK. NEW YORK	
		STOCK SIZE		
		//	COUPLING, FLEXIBLE	
		MATERIAL		
		//		
		WEIGHT PER PC.		
		//		
		TYPE & TEMPER		
		//		
		HEAT TREAT. SPEC.		
		//		
		FINISH & SPEC. NO.		

ISSUE	ITEM	CHANGED FROM	DATE	CN. NO.	DRAFTS	CHECKER	ENG. APP.
TOLERANCES			SCALE FULL				
ALL OTHERS	DEC. DIM. ± FRAC. DIM. ± ANGULAR DIM. ±		DRILL, PUNCH, COMMERCIAL STOCK SIZES AND MANUFACTURERS TOLERANCES ARE NOT INCLUDED.				

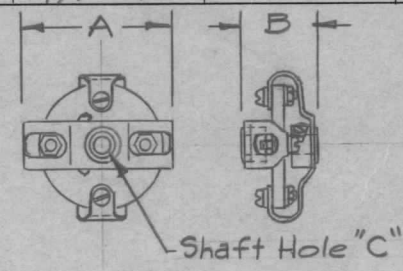
DATE 7-24-53  
DRAWN [Signature]  
ELEC. DES. APP. [Signature]  
MECH. DES. APP. [Signature]  
CHECKED [Signature]  
FINAL APPROVAL [Signature]

MC-112

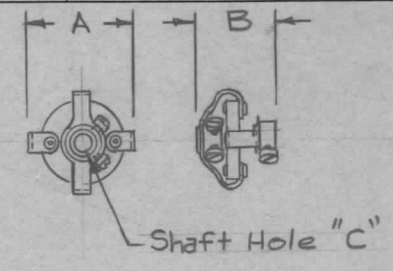


TMC NO.	MFG. NO.	TYPE	A	B	C	DWG.	PEAK VOLT.
MC-114-1	PL-5006	D	2-5/8	1-3/8	1/4 & 3/8	1	9000V.
MC-114-2	PL-5010	F	2-1/16	1-1/16	1/4 & 3/8	1	5000V.
MC-114-3	PL-5202	AB	1-9/32	29/32	1/4	2	5000V.
MC-114-4	PL-5000	A	1-9/32	3/4	1/4	3	3700V.
MC-114-5	PL-5002	B	1-9/32	1-3/32	1/4	4	7000V.
MC-114-6	PL-5004	C	2-5/8	2-3/32	1/4 & 3/8	5	13,500V.
MC-114-7	PL-5008	E	2-1/16	1-3/4	1/4 & 3/8	5	10,000V.

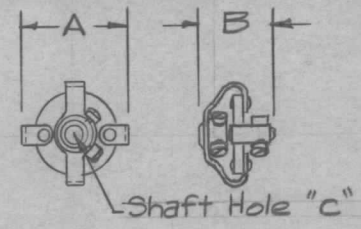
REQ. PER UNIT	USED ON		DATE	MC-114	E
	MODEL	ASS'Y. NO.			
2	TAC-1		5-27-58		



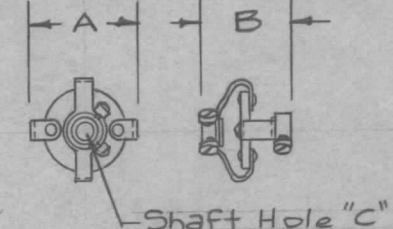
DWG. 1 TYPE D & F



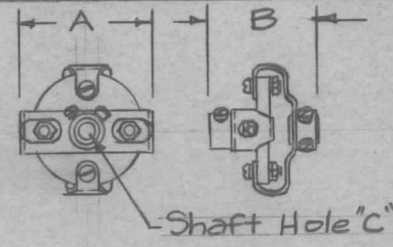
DWG. 2 TYPE AB



DWG. 3 TYPE A



DWG. 4 TYPE B



DWG. 5 TYPE C & E

NOTES:  
 1. TYPES C, D, E, & F (Dwg. 1 & 5) FIT BOTH 1/4" D. & 3/8" D. SHAFTS BY REMOVING BUSHING SUPPLIED.  
 2. SPRINGS ARE PHOSPHOR BRON.  
 3. HUBS ARE BRASS.  
 4. FOUR FILLISTER HD. SET SCREWS SUPPLIED BY MFG.

HUB INFO.

1. TYPE A - BOTH HUBS INSIDE SPRINGS.
2. TYPE B - BOTH HUBS OUTSIDE.
3. TYPE AB - ONE HUB INSIDE, ONE HUB OUTSIDE.
4. TYPE C & E - BOTH HUBS OUTSIDE
5. TYPE D & F - BOTH HUBS INSIDE.

REF- A. D. CARDWELL COND. CORP.

ISSUE	ITEM	CHANGED FROM	DATE	CH. NO.	DRAFTS	CHECKER	ENG. APP.
E		NOTE "5" DELE.	8.11.69	1952T	GE	MD	
D	1	NOTE 5 REVISED	11.2.64	12838	WB		
C	1	NOTE 5 ADDED	8.12.64	12111	WB		
B	1	REDWN.-MC-114-4 thru 7 ADDED.-DWGS. 2, 3, 4, 5 ADDED. MC-114-1, 2, 3 SAME	12/16/57	2	KG		

REQ. ITEM	PART NO.	DESCRIPTION	SYMBOL
		THE TECHNICAL MATERIEL CORP. MAMARONECK, NEW YORK	
	STOCK SIZE	COUPLING, FLEXIBLE, INSULATED	
	MATERIAL		
		16 12/13/57	
	TYPE & TEMPER	HEAT TREAT. SPEC. RE-DRAWN	
		CHECKED	FINAL APPROVAL
	FINISH & SPEC. NO.	ELEC. DES. APP. MECH. DES. APP.	MC-114 E

IF IT IS FOUND DESIRABLE TO CHANGE ANY TOLERANCE OR OTHER DETAIL SPECIFIED ON THIS DRAWING NOTIFY THE PURCHASER PROMPTLY.

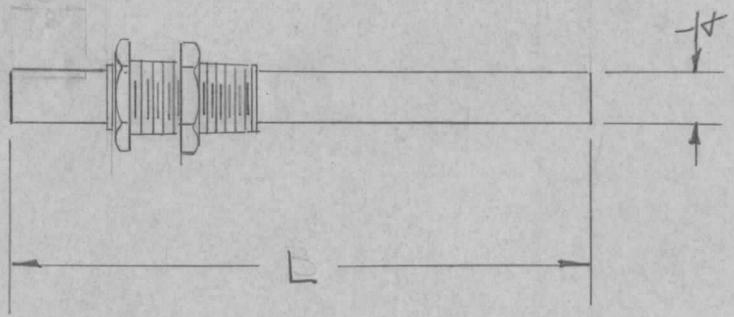
MC-115

MAXIMUM ALLOWABLE TOLERANCES HAVE BEEN DETERMINED AND DEVIATIONS WILL BE CAUSE FOR REJECTION. REMOVE ALL BURRS AND SHARP EDGES

USED ON

MODEL	PROJECT NO.	ASS'Y. NO.	DATE
TAC-1	132		8-26-53

TMC NO	MFG. NO	L
MC-115-1	115-256	3"
MC-115-2	115-2562	6



Dimensions For Ref. Only

REF: E.F. JOHNSON CO. # 115-256 & # 115-2562

REQ.	ITEM	PART NO.	DESCRIPTION	SYMBOL
			THE TECHNICAL MATERIEL CORP. MAMARONECK, NEW YORK	
		STOCK SIZE	BEARING & SHAFT	
		MATERIAL	MODEL TAC-1	
		WEIGHT PER PC.		
		TYPE & TEMPER		
			DRAWN	ELEC. DES. APP.
			CHECKED	FINAL APPROVAL
		HEAT TREAT. SPEC.		
		FINISH & SPEC. NO.		

ISSUE	ITEM	CHANGED FROM	DATE	CN. NO.	DRAFTS	CHECKER	ENG. APP.
TOLERANCES			SCALE PULL				
ALL OTHERS	DEC. DIM. ± FRAC. DIM. ± ANGULAR DIM. ±		DRILL, PUNCH, COMMERCIAL STOCK SIZES AND MANUFACTURERS TOLERANCES ARE NOT INCLUDED.				

MC-115

IF IT IS FOUND DESIRABLE TO CHANGE ANY TOLERANCE OR OTHER DETAIL SPECIFIED ON THIS DRAWING NOTIFY THE PURCHASER PROMPTLY.

# STANDARD DRAWING

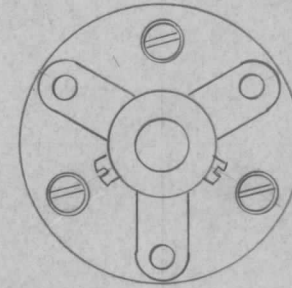
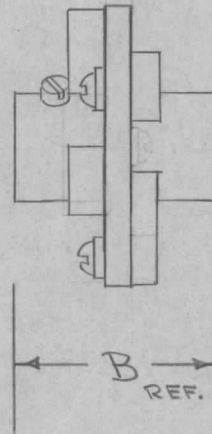
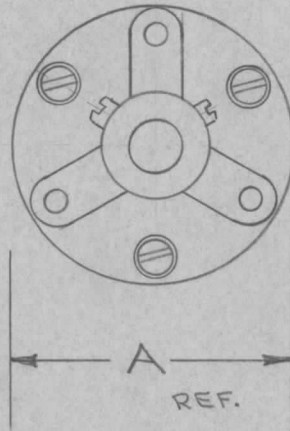
MC-116

MAXIMUM ALLOWABLE TOLERANCES HAVE BEEN DETERMINED AND DEVIATIONS WILL BE CAUSE FOR REJECTION. REMOVE ALL BURRS AND SHARP EDGES

USED ON

MODEL	PROJECT NO.	ASS'Y. NO.	DATE
-------	-------------	------------	------

T.M.C. NO.	CAT. NO.	TYPE	DIMENSIONS		PEAK FLASH-OVER	TO FIT SHAFT DIA.
			A	B		
MC-116-1	PL-5014	CNF	2/4	2/16	12,000V	3/8
MC-116-2	PL-5201	ENF	1 3/8	1 13/32	10,000V	1/4
MC-116-3	PL-5013	FNF	1 3/8	1 5/16	7,500V	1/4



REF. A. D. CARDWELL MFG. CO.

REQ.	ITEM	PART NO.	DESCRIPTION	SYMBOL
		//	THE TECHNICAL MATERIEL CORP. MAMARONECK, NEW YORK	
		STOCK SIZE		
		//	COUPLING, RIGID	
		MATERIAL WEIGHT PER PC.		
		//		
		TYPE & TEMPER	CIDD-11-20-53	
		//	DRAWN	ELEC. DES. APP. MECH. DES. APP.
		HEAT TREAT. SPEC.	WOC	
		//	CHECKED	FINAL APPROVAL
		FINISH & SPEC. NO.		MC-116

ISSUE	ITEM	CHANGED FROM	DATE	CN. NO.	DRAFTS	CHECKER	ENG. APP.
-------	------	--------------	------	---------	--------	---------	-----------

TOLERANCES

SCALE //

ALL OTHERS

DEC. DIM. ±  
FRAC. DIM. ±  
ANGULAR DIM. ±

DRILL, PUNCH, COMMERCIAL STOCK SIZES AND MANUFACTURERS TOLERANCES ARE NOT INCLUDED.



IF IT IS FOUND DESIRABLE TO CHANGE ANY TOLERANCE OR OTHER DETAIL SPECIFIED ON THIS DRAWING NOTIFY THE PURCHASER PROMPTLY.

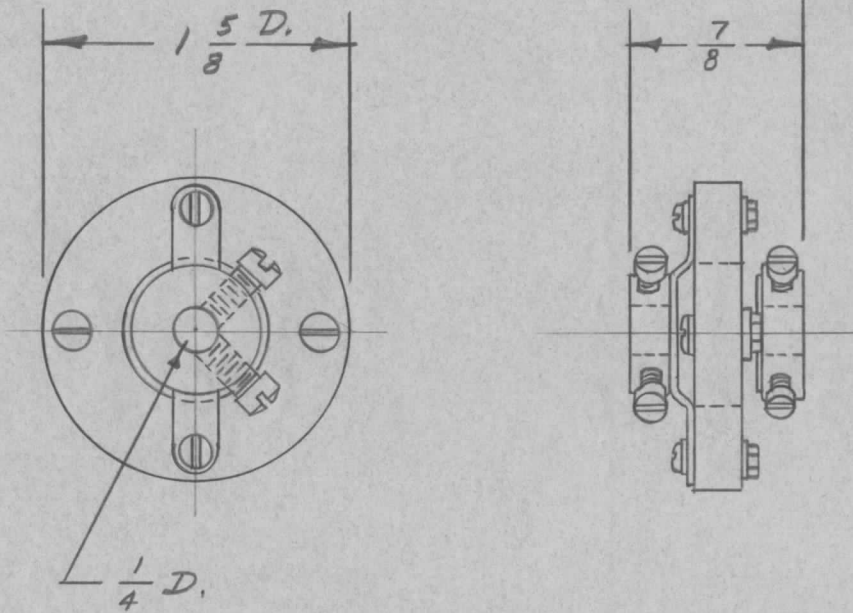
# STANDARD DRAWING

MC-117

MAXIMUM ALLOWABLE TOLERANCES HAVE BEEN DETERMINED AND DEVIATIONS WILL BE CAUSE FOR REJECTION. REMOVE ALL BURRS AND SHARP EDGES

USED ON

ANT. REF. DIV.	MODEL	PROJECT NO.	ASS'Y. NO.	DATE
				1-14-54



INSULATOR - CERAMIC - GRADE L-3  
JAN-I-10

REF: NATIONAL CO. INC. #TX-9

REQ.	ITEM	PART NO.	DESCRIPTION	SYMBOL
		//	THE TECHNICAL MATERIEL CORP. MAMARONECK. NEW YORK	
		STOCK SIZE		
		//	COUPLING, FLEXIBLE	
		MATERIAL		
		WEIGHT PER PC.		
		//		
		TYPE & TEMPER	16 1-14-54	
		//		
		HEAT TREAT. SPEC.		
		//		
		FINISH & SPEC. NO.		

ISSUE	ITEM	CHANGED FROM	DATE	CN. NO.	DRAFTS	CHECKER	ENG. APP.
TOLERANCES			SCALE //				
ALL OTHERS	DEC. DIM. $\pm$ FRAC. DIM. $\pm$ ANGULAR DIM. $\pm$		DRILL, PUNCH, COMMERCIAL STOCK SIZES AND MANUFACTURERS TOLERANCES ARE NOT INCLUDED.				

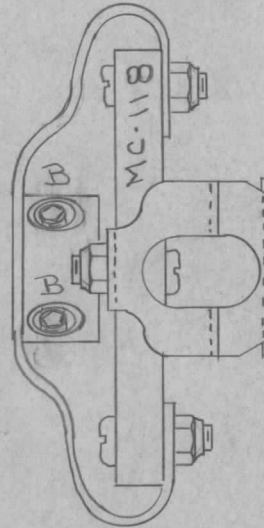
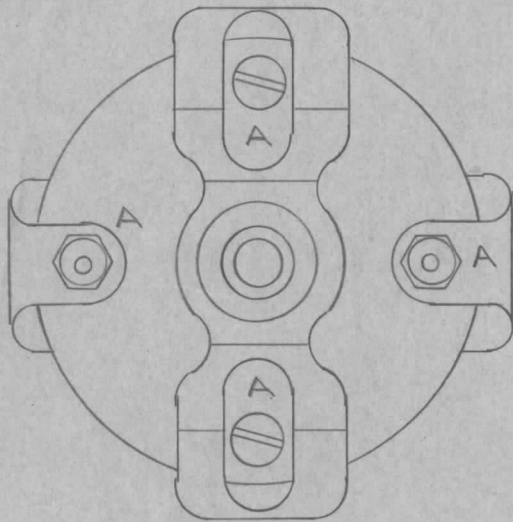
DRAWN: *Jade*  
ELEC. DES. APP.:  
MECH. DES. APP.: *WDE*  
CHECKED:  
FINAL APPROVAL: *WDE*  
MC-117

IF IT IS FOUND DESIRABLE TO CHANGE ANY TOLERANCE OR OTHER DETAIL SPECIFIED ON THIS DRAWING NOTIFY THE PURCHASER PROMPTLY.

MAXIMUM ALLOWABLE TOLERANCES HAVE BEEN DETERMINED AND DEVIATIONS WILL BE CAUSE FOR REJECTION. REMOVE ALL BURRS AND SHARP EDGES

MC-118 B

REQ. PER UNIT	USED ON			
	MODEL	PROJECT NO.	ASS'Y. NO.	DATE
2	TAC-1	132	A-579	1-29-54
	TAC-1	132	A-787	1-28-54



USE MC-114-2  
 STEP 1- REMOVE SCREWS, WASHERS AND NUTS AT POINTS "A".  
 STEP 2- REPLACE SCREWS IN OPPOSITE DIRECTION.  
 STEP 3- DISCARD WASHERS & NUTS. REPLACE WITH SM-127-D-6-32 AS SHOWN IN SKETCH.  
 STEP 4- REMOVE SET SCREWS AT POINTS "B". DISCARD AND REPLACE WITH AN565A8H4 (4 REQ.)  
 STEP 5- STAMP MC-118 AS SHOWN  
 STEP 6- REMOVE 1 BUSHING ONLY.

MODIFIED MC-114-2

REQ.	ITEM	PART NO.	DESCRIPTION			SYMBOL
			THE TECHNICAL MATERIEL CORP. MAMARONECK, NEW YORK			MC-118 B
		STOCK SIZE				
			COUPLING, MODIFIED			TAC-1
		MATERIAL				
B	1	AN565A8H4 WAS 18-3	11-22-54	2	P.B.	JAG
A	1	STEP 6 ADDED	9/1/54	1	C.D.D.	JAG
ISSUE	ITEM	CHANGED FROM	DATE	CN. NO.	DRAFTS CHECKER	ENG. APP.
TOLERANCES			SCALE			
ALL OTHERS	DEC. DIM. ± FRAC. DIM. ± ANGULAR DIM. ±		DRILL, PUNCH, COMMERCIAL STOCK SIZES AND MANUFACTURERS TOLERANCES ARE NOT INCLUDED.			
					HEAT TREAT. SPEC.	
					FINISH & SPEC. NO.	
			DRAWN		ELEC. DES. APP.	MECH. DES. APP.
			CHECKED		FINAL APPROVAL	

IF IT IS FOUND DESIRABLE TO CHANGE ANY TOLERANCE OR OTHER DETAIL SPECIFIED ON THIS DRAWING NOTIFY THE PURCHASER PROMPTLY.

MC-119..B

MAXIMUM ALLOWABLE TOLERANCES HAVE BEEN DETERMINED AND DEVIATIONS WILL BE CAUSE FOR REJECTION. REMOVE ALL BURRS AND SHARP EDGES

REQ. PER UNIT

USED ON

MODEL

PROJECT NO.

ASS'Y. NO.

DATE

2

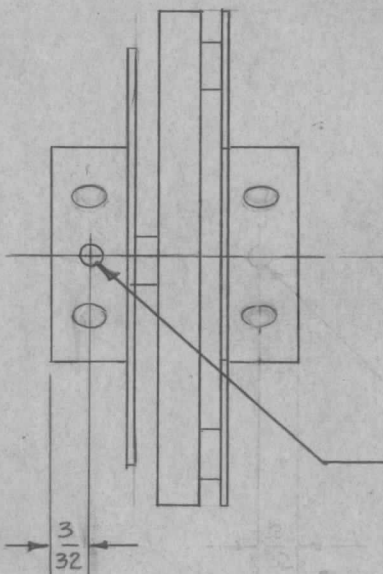
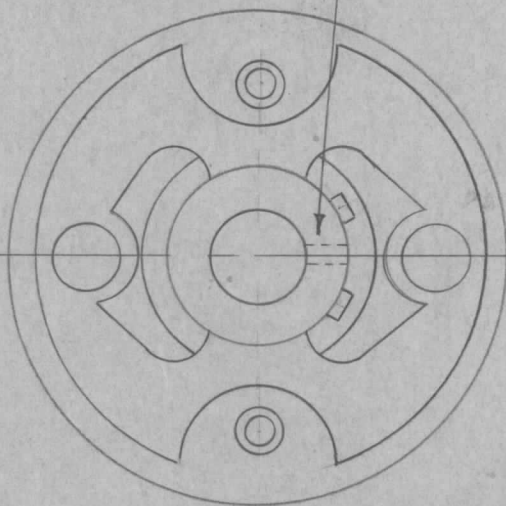
TAC-1

132

A-723

1/25/54

NOTE - DRILL PILOT HOLE ONLY THRU 1 SIDE OF COLLAR.



USE MC-104-2

STEP 1 REMOVE EXISTING 4 SET SCREWS AND REPLACE WITH AN-565D-GH3  
STEP 2 - DRILL PILOT HOLE AS SHOWN

NO. 52 (.063) DRILL 1 REQ.

MODIFY MC-104-2

REQ.	ITEM	PART NO.	DESCRIPTION	SYMBOL
	#		THE TECHNICAL MATERIEL CORP. MAMARONECK, NEW YORK	
		STOCK SIZE		
	#	#	COUPLING, MODIFIED	
		MATERIAL	TAC-1	
		WEIGHT PER PC.		
			C.D.D.	WDC
		TYPE & TEMPER	APB	WDC
			DRAWN	ELEC. DES. APP.
			JADe	APB
		HEAT TREAT. SPEC.	CHECKED	FINAL APPROVAL
				MC-119
		FINISH & SPEC. NO.		B

ISSUE	ITEM	CHANGED FROM	DATE	CN. NO.	DRAFTS	CHECKER	ENG. APP.
B	1	PILOT HOLE MOVED	1/15/57	2	16	JADe	WDC
A	1	PILOT HOLE REMOVED		1	C.D.D.	JADe	WDC

TOLERANCES		SCALE
ALL OTHERS	DEC. DIM. ± FRAC. DIM. ± ANGULAR DIM. ±	#
DRILL, PUNCH, COMMERCIAL STOCK SIZES AND MANUFACTURERS TOLERANCES ARE NOT INCLUDED.		



IF IT IS FOUND DESIRABLE TO CHANGE ANY TOLERANCE OR OTHER DETAIL SPECIFIED ON THIS DRAWING NOTIFY THE PURCHASER PROMPTLY.

MC-120

MAXIMUM ALLOWABLE TOLERANCES HAVE BEEN DETERMINED AND DEVIATIONS WILL BE CAUSE FOR REJECTION. REMOVE ALL BURRS AND SHARP EDGES

REQ. PER UNIT

USED ON

MODEL

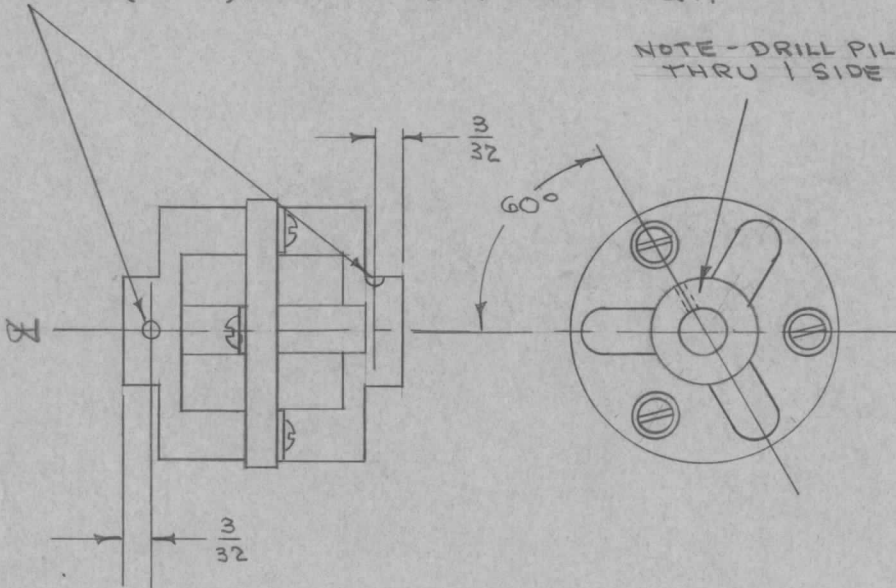
PROJECT NO.

ASS'Y. NO.

DATE

NO. 52 (.063) DRILL 2 HOLES REQ.

NOTE - DRILL PILOT HOLES ONLY THRU 1 SIDE OF COLLAR.



USE MC-116-2

STEP 1 - REMOVE & DISCARD EXISTING SET SCREWS. REPLACE WITH AN565D-6-3.

STEP 2 - DRILL PILOT HOLES AS SHOWN

MODIFY MC-116-2

REQ.	ITEM	PART NO.	DESCRIPTION	SYMBOL
			THE TECHNICAL MATERIEL CORP. MAMARONECK, NEW YORK	
		STOCK SIZE		
			COUPLING, MODIFIED	
		MATERIAL	TAC-1	
		WEIGHT PER PC.		
		TYPE & TEMPER	C.I.D.D.	ARB
			DRAWN	WDE
		HEAT TREAT. SPEC.	ARB	ARB
			CHECKED	WDE
		FINISH & SPEC. NO.		

ISSUE ITEM CHANGED FROM DATE CN. NO. DRAFTS CHECKER ENG. APP.

TOLERANCES

SCALE

DRILL, PUNCH, COMMERCIAL STOCK SIZES AND MANUFACTURERS TOLERANCES ARE NOT INCLUDED.

ALL OTHERS

DEC. DIM.  $\pm$   
FRAC. DIM.  $\pm \frac{1}{64}$   
ANGULAR DIM.  $\pm$

MC-120

IF IT IS FOUND DESIRABLE TO CHANGE ANY TOLERANCE OR OTHER DETAIL SPECIFIED ON THIS DRAWING NOTIFY THE PURCHASER PROMPTLY.

MC-122

MAXIMUM ALLOWABLE TOLERANCES HAVE BEEN DETERMINED AND DEVIATIONS WILL BE CAUSE FOR REJECTION. REMOVE ALL BURRS AND SHARP EDGES

REQ. PER UNIT

USED ON

MODEL

PROJECT NO.

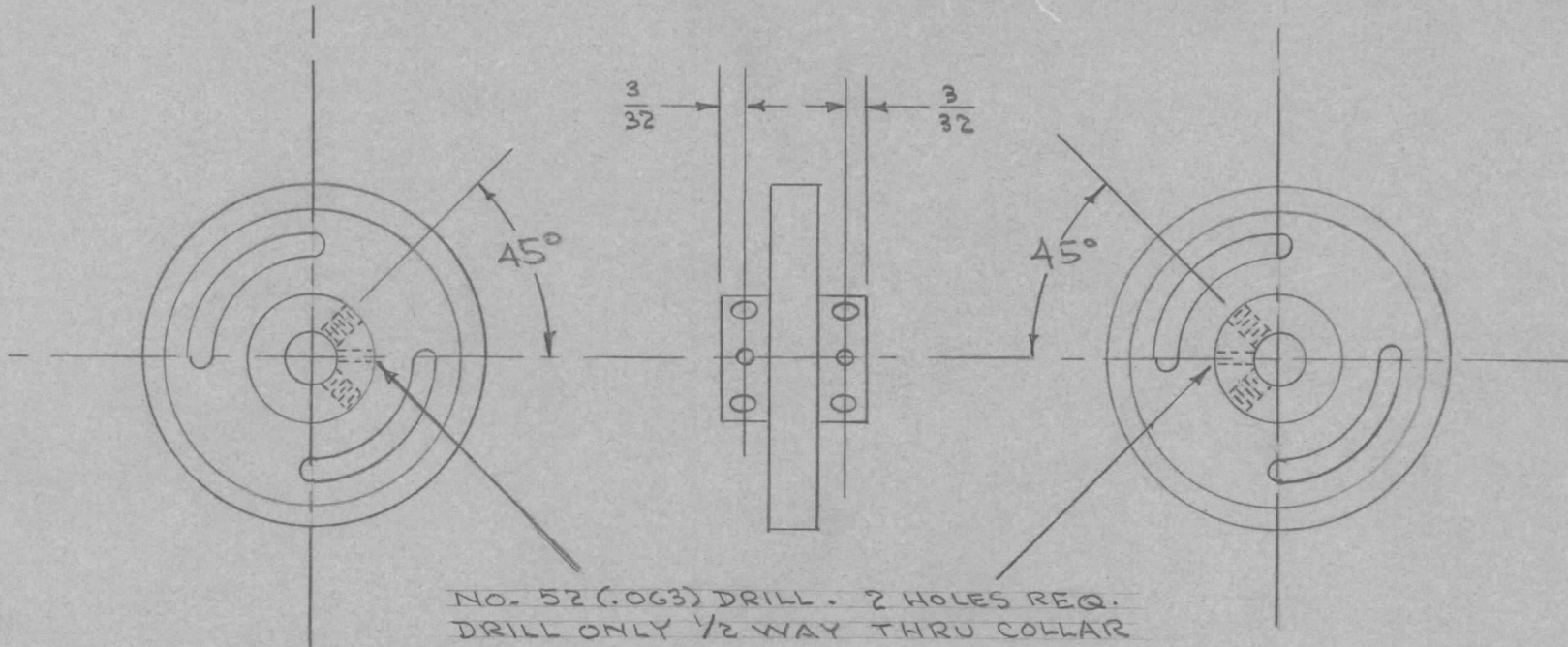
ASS'Y. NO.

DATE

2

TAC-1

132



MODIFY MC-III

REQ.	ITEM	PART NO.	DESCRIPTION	SYMBOL
			THE TECHNICAL MATERIEL CORP. MAMARONECK, NEW YORK	
		STOCK SIZE		
			COUPLING, FLEXIBLE	
		MATERIAL	WEIGHT PER PC.	(MODIFY MC-III) TAC-1
		TYPE & TEMPER		C.D.D.
				W.D.
			DRAWN	ELEC. DES. APP. MECH. DES. APP.
			J.A.B.	W.D.
		HEAT TREAT. SPEC.	CHECKED	FINAL APPROVAL
				MC-122
		FINISH & SPEC. NO.		

ISSUE ITEM CHANGED FROM DATE CN. NO. DRAFTS CHECKER ENG. APP.

TOLERANCES

SCALE

ALL OTHERS

DEC. DIM. ±  
FRAC. DIM. ±  
ANGULAR DIM. ±

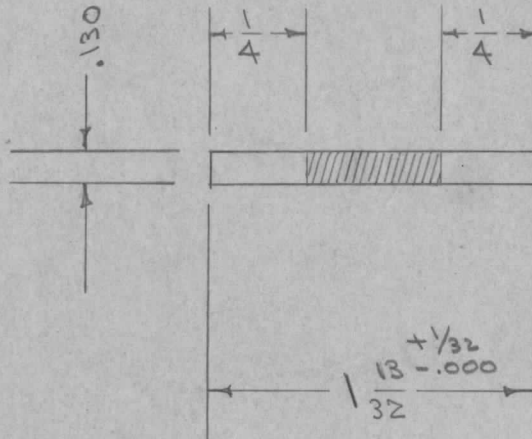
DRILL, PUNCH, COMMERCIAL STOCK SIZES AND MANUFACTURERS TOLERANCES ARE NOT INCLUDED.

IF IT IS FOUND DESIRABLE TO CHANGE ANY TOLERANCE OR OTHER DETAIL SPECIFIED ON THIS DRAWING NOTIFY THE PURCHASER PROMPTLY.

MC-123

MAXIMUM ALLOWABLE TOLERANCES HAVE BEEN DETERMINED AND DEVIATIONS WILL BE CAUSE FOR REJECTION. REMOVE ALL BURRS AND SHARP EDGES

REQ. PER UNIT	USED ON			
	MODEL	PROJECT NO.	ASS'Y. NO.	DATE
1	PMO-1	285		9-20-54
1	PMO-2	285		9-20-54
1	RTF			2-3-56



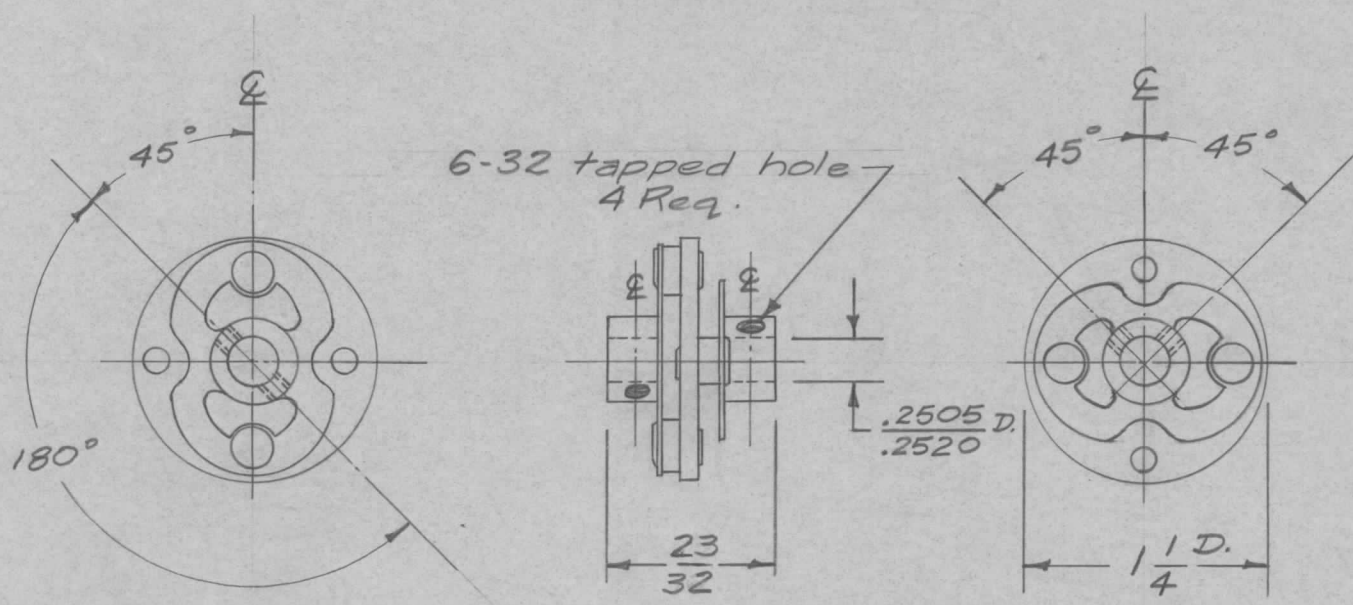
SWAGE BOTH ENDS

REQ.	ITEM	PART NO.	DESCRIPTION	SYMBOL
			<b>THE TECHNICAL MATERIEL CORP.</b> MAMARONECK, NEW YORK	
		STOCK SIZE	COUPLING, TUNING COND.	
	PHOSPHER BRONZE			
	MATERIAL	WEIGHT PER PC.		
		TYPE & TEMPER		
		HEAT TREAT. SPEC.		
		S-105 CADMIUM PLATE .0003		
		FINISH & SPEC. NO.		
ISSUE			DATE	ENG. APP.
CHANGED FROM			DATE	ENG. APP.
TOLERANCES			SCALE	ENG. APP.
ALL OTHERS			SCALE	ENG. APP.
DEC. DIM. $\pm$			SCALE	ENG. APP.
FRAC. DIM. $\pm \frac{1}{64}$			SCALE	ENG. APP.
ANGULAR DIM. $\pm$			SCALE	ENG. APP.
DRILL, PUNCH, COMMERCIAL STOCK SIZES AND MANUFACTURERS TOLERANCES ARE NOT INCLUDED.			SCALE	ENG. APP.
FINISH & SPEC. NO.			SCALE	ENG. APP.
CHECKED			DATE	ENG. APP.
FINAL APPROVAL			DATE	ENG. APP.
MC-123			DATE	ENG. APP.



REQ. PER UNIT	USED ON		
	MODEL	ASS'Y. NO.	DATE
1	SBE-1		9-30-57
1	SBE-2		5-5-58

MC-124 B



Note-1. Four headless Set Screws, 6-32 x 3/16 Long, Hex Socket Head, to be supplied by manufacturer. (TMC Equiv. - AN565D6H3)  
 2. HUBS ARE TO WITHSTAND A MINIMUM TORQUE OF 100 IN. OZ. WITHOUT TURNING.

NON-INSULATED TYPE  
 Ref. - HAMMARLUND MFG. CO. 9400-41-50009

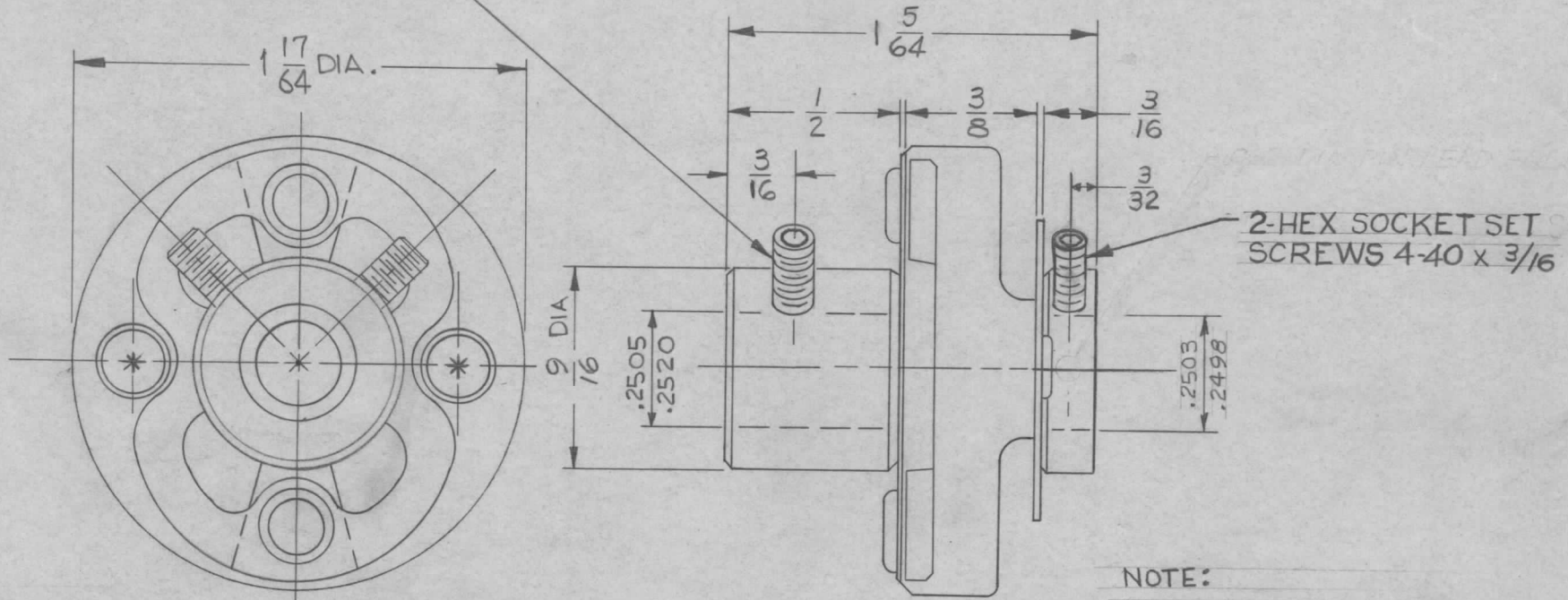
REQ.	ITEM	PART NO.	DESCRIPTION				SYMBOL
			THE TECHNICAL MATERIEL CORP. MAMARONECK, NEW YORK				
			COUPLING, FLEXIBLE				
B		ADDED NOTE 2.	8-8-66	16727	RME	OCB	MM
A	#	23/32 WAS 13/16 MFG PT# ADDED	11/16/65	15182	F.V.V.	OCB	OC
ISSUE	ITEM	CHANGED FROM	DATE	CH. NO.	DRAFTS	CHECKER	ENG. APP.
TOLERANCES			SCALE:				
DEC. DIM. ±			MAXIMUM ALLOWABLE TOLERANCES HAVE BEEN DETERMINED AND ANY DEVIATIONS WILL BE CAUSE FOR REJECTION.				
FRAC. DIM. ±			REMOVE ALL BURRS AND SHARP EDGES				
ANGULAR DIM. ±							
TYPE & TEMPER		HEAT TREAT. SPEC.	DRAWN		CHECKED	FINAL APPROVAL	
FINISH & SPEC. NO.		ELEC. DES. APP.	MECH. DES. APP.		MC-124 B		

# STANDARD DRAWING

REQ. PER UNIT	USED ON		
	MODEL	ASS'Y. NO.	DATE
1	HFR-2		12-12-63
1	SBG-3		12-12-63

MC-127 B

2-HEX SOCKET SET SCREWS  
6-32 X 3/16



**NOTE:**

1. SOLDER ALL RIVETS.
2. FILL IN HOLES MARKED \* WITH EPOXY AFTER ASSY. (BOTH SIDES)

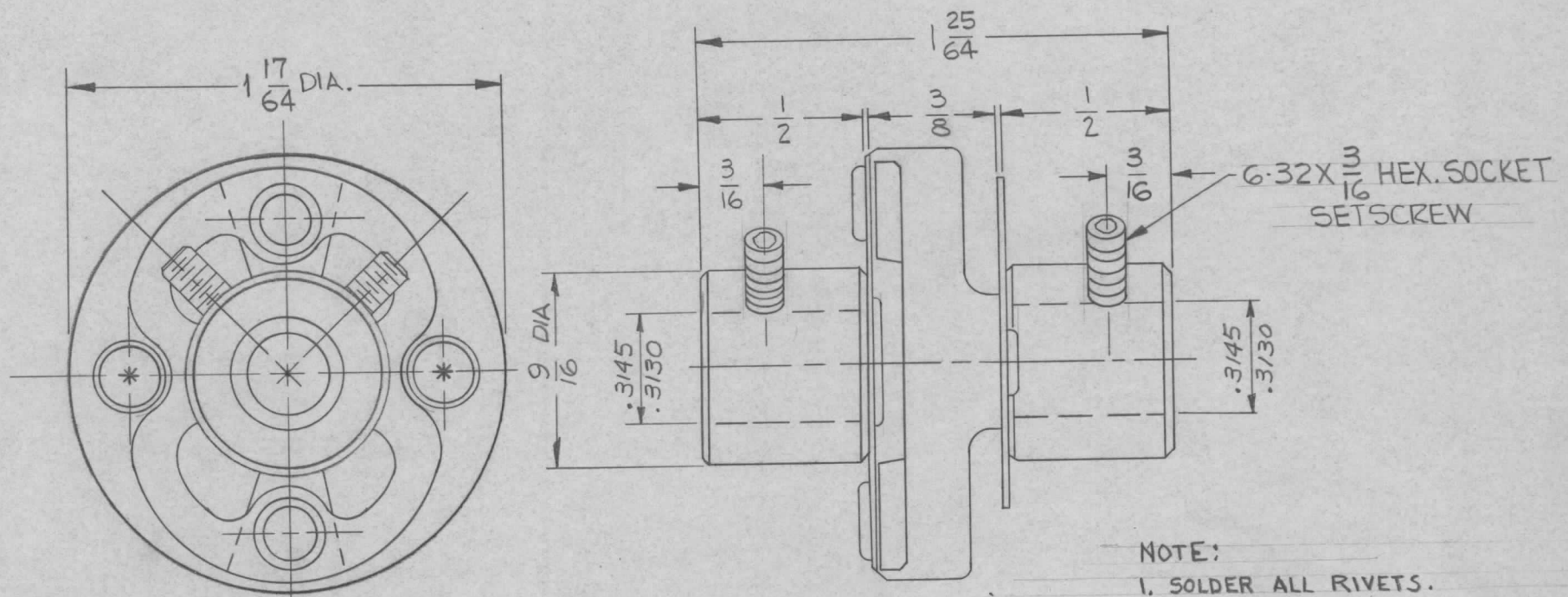
**MATERIAL:**  
 INSULATION - STEATITE GRADE 1A OR BETTER.  
 FLEXIBLE ARMS - PHOSPHOR, BRONZE, SPRING TEMPERED, NICKLE PLATED (.008 THICK).  
 HUBS - BRASS, NICKLE PLATED, STAKED TO FLEX. ARMS.  
 SET SCREWS - ALLEN HEX, SOCKET TYPE, HARDENED STEEL, CADMIUM PLATED.  
 RIVETS - BRASS, NICKLE PLATED.  
 FLASH-OVER VOLTAGE: 5000V RMS. APPROX.

127

REQ.	ITEM	PART NO.	DESCRIPTION	SYMBOL				
			ANGER					
B	NOTES 1 & 2 ADD.	3-22-65 13754	THE TECHNICAL MATERIEL CORP. MAMARONECK, NEW YORK					
A	EXTENSIVE CHANGES SEE EMN #	4/20/64 11253	COUPLING, FLEXIBLE					
SYM	DESCRIPTION	DATE	CH. NO.	DRAFTS	CHECKER	ENG. APP.	MATERIAL	
UNLESS OTHERWISE SPECIFIED DIMENSIONS ARE IN INCHES AND INCLUDE CHEMICALLY APPLIED OR PLATED FINISHES		SCALE DO NOT SCALE						
DECIMALS .X ± .05 .XX ± .01 .XXX ± .005	TOLERANCES	FRACTIONS ± 1/64 ANGLES ± 0° 30'	CODE C	5401-12(410-20)				
						TYPE & TEMPER		HEAT TREAT. SPEC.
						DRAWN		CHECKED
						FINISH & SPEC. NO.		ELEC. DES. APP.
								MECH. DES. APP.
								MC-127 B

REQ. PER UNIT	USED ON		
	MODEL	ASS'Y. NO.	DATE
1	HFR-2		12-12-63
1	SBG-3		12-12-63

MC-128 A



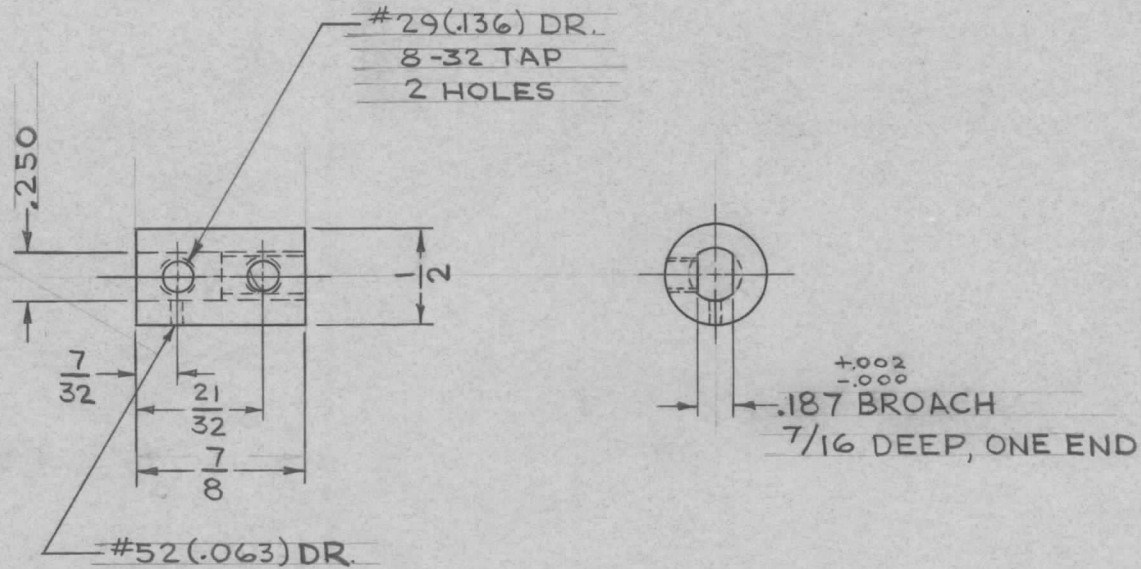
**MATERIAL:**  
 INSULATION - STEATITE GRADE L4 OR BETTER.  
 FLEXIBLE ARMS - PHOSPHOR, BRONZE, SPRING TEMPERED, NICKLE PLATED (.008 THICK).  
 HUBS - BRASS, NICKLE PLATED, STAKED TO FLEX. ARMS.  
 SET SCREWS - ALLEN HEX: SOCKET TYPE, HARDENED STEEL, CADMIUM PLATED.  
 RIVETS - BRASS, NICKLE PLATED.  
 FLASH-OVER VOLTAGE: 5000V RMS. APPROX.

- NOTE:**
- SOLDER ALL RIVETS.
  - FILL IN HOLES MARKED \* WITH EPOXY AFTER ASSY. (BOTH SIDES)

REQ.	ITEM	PART NO.	DESCRIPTION	SYMBOL
			ANGER	
STOCK SIZE			THE TECHNICAL MATERIEL CORP. MAMARONECK, NEW YORK	
SEE NOTES			COUPLING, FLEXIBLE	
MATERIAL				
A	NOTES 1 & 2 ADD.	3122.65 13754 9X JCP	Drawn JCP 12/26/63	Checked RJC
UNLESS OTHERWISE SPECIFIED DIMENSIONS ARE IN INCHES AND INCLUDE CHEMICALLY APPLIED OR PLATED FINISHES		SCALE	DO NOT SCALE	
TOLERANCES		CODE	5401-12(410-19)	
DECIMALS .X ± .05 .XX ± .01 .XXX ± .005		FRACTIONS ± 1/64 ANGLES ± 0° 30'	TYPE & TEMPER	HEAT TREAT. SPEC.
			FINISH & SPEC. NO.	
			DRAWN	CHECKED
			FINAL APPROVAL	
			ELEC. DES. APP.	MECH. DES. APP.
			MC-128 A	



REQ. PER UNIT	USED ON		MC-130 $\emptyset$
	MODEL	ASS'Y. NO.	
	ARCA		5/4/64



REQ.	ITEM	PART NO.	EATON	DESCRIPTION	SYMBOL	
		1/2 DIA. ROD		THE TECHNICAL MATERIEL CORP. MAMARONECK, NEW YORK		
		STOCK SIZE		COUPLING, MECHANICAL		
		STAINLESS STEEL		(LEDEX DRIVE)		
		MATERIAL				
		303	TAR	JDE	F S Eaton 5/6/65	
		TYPE & TEMPER	HEAT TREAT. SPEC.	DRAWN	CHECKED	FINAL APPROVAL
		CLEAR PASSIVATE			B. Barnes 5/6/65	MC-130 $\emptyset$
		FINISH & SPEC. NO.	ELEC. DES. APP.	MECH. DES. APP.		

UNLESS OTHERWISE SPECIFIED  
DIMENSIONS ARE IN INCHES AND INCLUDE  
CHEMICALLY APPLIED OR PLATED FINISHES

DECIMALS  
.X ± .05  
.XX ± .01  
.XXX ± .005

FRACTIONS  
± 1/64  
ANGLES  
± 0° 30'

TOLERANCES

CODE  
A

SCALE  
1:1

DATE 5/6/65

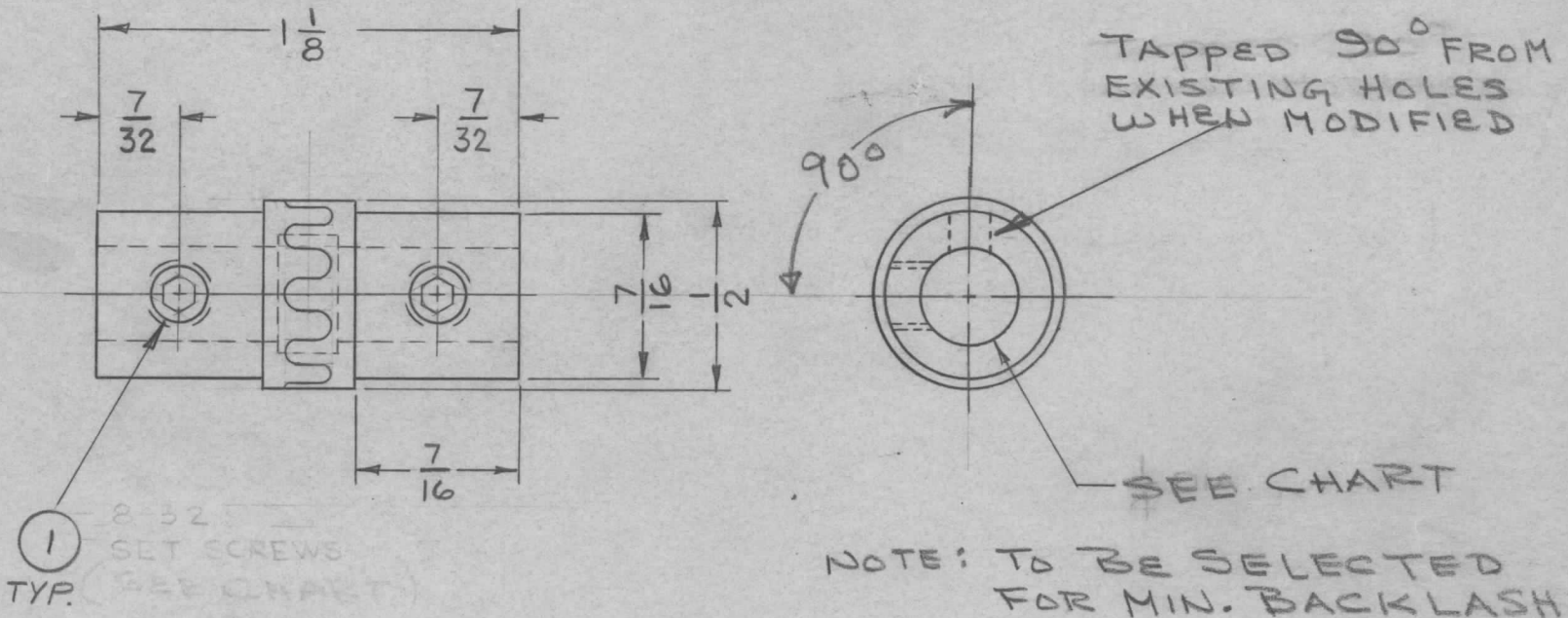
CH. NO.  $\emptyset$

DRAFTS

CHECKER

ENG. APP.

TMC PART NO	MFGR P/N	QTY. ITEM 1	BORE DIA	REQ. PER UNIT	USED ON		MC131	A
MC131-1	FA 5/4 (MODIFIED)	4	1/4		MODEL	ASS'Y. NO.		
					ARCA-1		5-1-64	



NOTE: 1 COUPLING CONSISTS OF 2 MULTI-JAW SECTIONS

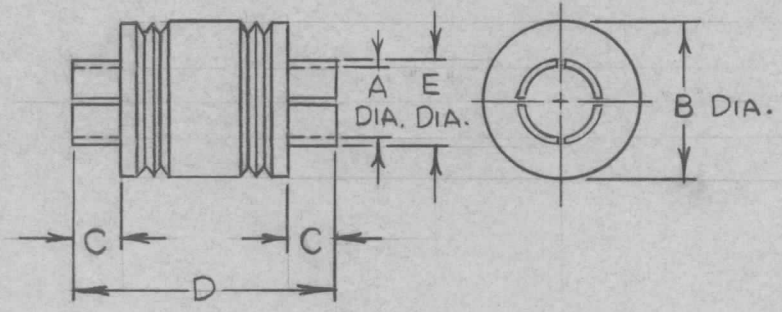
FOR REQ SEE CHART

				REQ. ITEM	1	PART NO.	SLHC0832SP3	DESCRIPTION	SET SCREW	SYMBOL		
A	QTY. COL WAS TAR. COL. NOTE FIT. 1 ADDED	12/14/65	15361	AVY	QC/B	JCC	THE TECHNICAL MATERIEL CORP. MAMARONECK, NEW YORK					
Ø	RELEASE FOR PRODUCTION	5/6/65	Ø				STOCK SIZE	COUPLING, MULTI-JAW				
X1	CHART & NOTES ADDED	5/6/65	X1				MATERIAL	STEEL				
SYM	DESCRIPTION	DATE	CH. NO.	DRAFTS	CHECKER	ENG. APP.						
UNLESS OTHERWISE SPECIFIED DIMENSIONS ARE IN INCHES AND INCLUDE CHEMICALLY APPLIED OR PLATED FINISHES		SCALE		2:1								
DECIMALS .X ± .05 .XX ± .01 .XXX ± .005	TOLERANCES	FRACTIONS ± 1/64 ANGLES ± 0° 30'	CODE	C S401-15-FA 5/4								
BLACK SATIN		FINISH & SPEC. NO.		TYPE & TEMPER		HEAT TREAT. SPEC.		DRAWN		CHECKED	FINAL APPROVAL	
				TAR		JCC		F. E. Eaton 5/6/65		MCM	A	
								ELEC. DES. APP.		MECH. DES. APP.	MC131	A

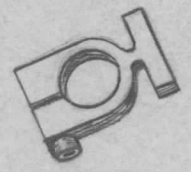
TMC PT. NO.	MFG. PT. NO.	SHAFT SIZE	"A" +.001 -.000	"B"	"C"	"D"	"E"
MC132-1	M-B2	3/8	.375	3/4	1/4	1 3/8	.437

REQ. PER UNIT	USED ON		
	MODEL	ASS'Y. NO.	DATE
	GPT-10KLF		10-29-65

MC132  $\emptyset$



NOTE:  
 COUPLING  
 SUPPLIED WITH  
 STAINLESS STEEL CLAMP.



								REQ. ITEM	PART NO.	BUDETTI	DESCRIPTION	SYMBOL		
											THE TECHNICAL MATERIEL CORP. MAMARONECK. NEW YORK			
									STOCK SIZE		COUPLING, MECHANICAL, FLEXIBLE			
$\emptyset$	ORIGINAL RELEASE	1/5/66	$\emptyset$						STAINLESS STEEL NON-MAGNETIC					
SYM	DESCRIPTION	DATE	CH. NO.	DRAFTS	CHECKER	ENG. APP.			MATERIAL					
UNLESS OTHERWISE SPECIFIED DIMENSIONS ARE IN INCHES AND INCLUDE CHEMICALLY APPLIED OR PLATED FINISHES							SCALE			H-AUSTIN	HDA 1/5/66	AKH		
										TYPE & TEMPER	HEAT TREAT. SPEC.	DRAWN	CHECKED	FINAL APPROVAL
DECIMALS .X $\pm$ .05 .XX $\pm$ .01 .XXX $\pm$ .005							FRACTIONS $\pm$ 1/64 ANGLES $\pm$ 0° 30'	CODE C	S401-414	PASSIVATE	1/5/66			MC132 $\emptyset$
										FINISH & SPEC. NO.	ELEC. DES. APP.	MECH. DES. APP.		

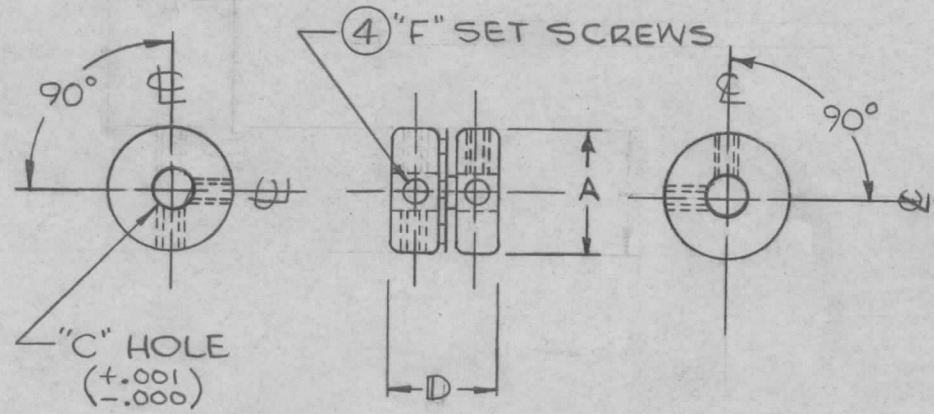




REQ. PER UNIT	USED ON			MC135	A
	MODEL	ASS'Y. NO.	DATE		
1	TLAA-2.5K	BMA 125	11-7-66		

TMC P/N	MODEL	SIZE	A	C*	D	F	AXIAL DEFL	ANGULAR DEFL MAX	AXIAL MOVEMENT	TORQUE IN LB	WEIGHT OZ	MOVEMENT OF INERTIA LB-IN <sup>2</sup> X(10) <sup>-3</sup>
MC135-1	E	62	5/8	3/16 1/8-1/4	9/16	4-40	0	3°	.015	20	.17	.67

\* BORE DIA IN 1/32 INCREMENTS



SPECIFICATIONS

MAX OPERATING TEMP — 350°F  
 " " SPEED — 7500 RPM

MATERIALS

HUBS — ALUMINUM, CLEAR ANODIZED  
 RIVETS — BRASS, NICKEL PLATED  
 FLEXIBLE MEMBRANES — BERYLLIUM COPPER  
 SOCKET SET SCREWS — S.S. PASSIVATED

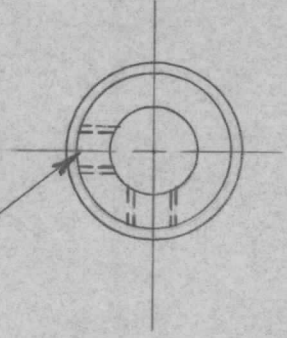
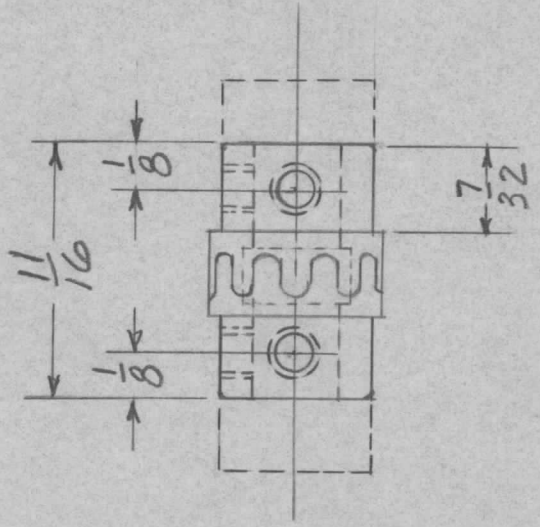
REQ. ITEM	PART NO.	BUDETTI DESCRIPTION	SYMBOL
		THE TECHNICAL MATERIEL CORP. MAMARONECK, NEW YORK	
A	CHG'D LOC 1 "F" HOLE. ADD RIGHT SIDE VIEW	12-27-66	17574 RME
Ø	ORIGINAL RELEASE FOR PRODUCTION	11/29/66	Jc
SYM	DESCRIPTION	DATE	CH. NO. DRAFTS CHECKER ENG. APP.
UNLESS OTHERWISE SPECIFIED DIMENSIONS ARE IN INCHES AND INCLUDE CHEMICALLY APPLIED OR PLATED FINISHES		SCALE — 1/1	
DECIMALS .X ± .05 .XX ± .01 .XXX ± .005	TOLERANCES	FRACTIONS ± 1/64 ANGLES ± 0° 30'	CODE S401-147
		TYPE & TEMPER	HEAT TREAT. SPEC.
		DRAWN	CHECKED
		FINISH & SPEC. NO.	
		ELEC. DES. APP.	MECH. DES. APP.
		MCI35 A	

APPLICATION

REVISIONS

QTY	MODEL USED ON	ASS'Y NO.	LTR	DESCRIPTION	DATE	E.M.N.NO	DRAFT	CHKD	APPD
1	MMX-1-M		X	EXP. RELEASE	4-24-68		R.G.		
1	MMX(C)		Ø	ORIG. RELEASE FOR PROD.	8-12-68	Ø	R.G.		

6-32 TAP 2 HOLES  
90° APART  
(EACH JAW)



REF: MC 131 (MFG P/N FA 5/4)

UNLESS OTHERWISE SPECIFIED DIMENSIONS ARE IN INCHES AND INCLUDE CHEMICALLY APPLIED OR PLATED FINISHES	REQ'D ITEM	PART NUMBER	DESCRIPTION	SYM.
DECIMALS .X ± .05 .XX ± .01 .XXX ± .005 FRACTIONS 1/64 TOLS. ANGLES 0° .30'	O. POSE		LIST OF MATERIAL SK3246MC-1C	
FINAL APPROVAL MECH. DES. ELECT. DES. CHECKED DRAWN			THE TECHNICAL MATERIEL CORP. MAMARONECK, NEW YORK  COUPLING, MULTI-JAW	
MATERIAL				
FINISH				
SA01-451				

SIZE	CODE IDENT. NO.	DWG NO.	ISSUE
A	82679	MC 136	Ø
SCALE	SHEET	OF	

NOTICE TO PERSONS RECEIVING THIS DRAWING  
THE TECHNICAL MATERIEL CORPORATION claims proprietary right in the material disclosed hereon. This drawing is issued in confidence for engineering information only and may not be reproduced or used to manufacture anything shown hereon without permission from THE TECHNICAL MATERIEL CORPORATION to the user. This drawing is loaned for mutual assistance and is subject to recall at any time.



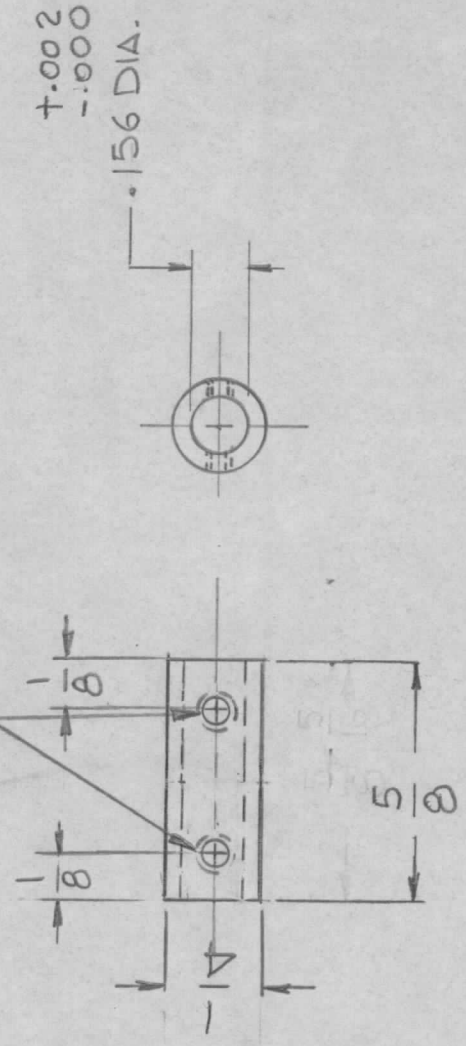
APPLICATION

QTY	MODEL USED ON	ASS'Y NO.	LTR
1	GPR-110		X

REVISIONS

DESCRIPTION	DATE	E.M.N.NO	DRAFT	CHKD	APPD
EXP. RELEASE					
X1 .128 DIA & 5/16 DIM. ADD.	11-7-74		GDL		
X2 .128 DIA & 5/16 DIM DEL.	9-3-76		GDL		
Original Release	1-19-77		GDL		*

DRILL & TAP FOR 4-40  
( 4 REQD )



UNLESS OTHERWISE SPECIFIED DIMENSIONS ARE IN INCHES AND INCLUDE CHEMICALLY APPLIED OR PLATED FINISHES

DECIMALS  
X ± .05  
.XX ± .01  
.XXX ± .005

FRACTIONS  
1/64

TOLS.  
ANGLES  
0° .30'

MATERIAL  
BRASS

FINISH  
S135  
NIKEL PLATE

REQ'D	ITEM	PART NUMBER	DESCRIPTION	SYM.
-------	------	-------------	-------------	------

LIST OF MATERIAL

THE TECHNICAL MATERIEL CORP.  
MAMARONECK, NEW YORK

COUPLING, SHAFT

NOTICE TO PERSONS RECEIVING THIS DRAWING  
THE TECHNICAL MATERIEL CORPORATION claims proprietary right in the material disclosed hereon. This drawing is issued in confidence for engineering information only and may not be reproduced or used to manufacture anything shown hereon without permission from THE TECHNICAL MATERIEL CORPORATION to the user. This drawing is loaned for mutual assistance and is subject to recall at any time.

SIZE A	CODE IDENT. NO. 82679	DWG NO. MC 137	ISSUE
SCALE 2:1	SHEET 2:1	OF	