

IF IT IS FOUND DESIRABLE TO CHANGE ANY TOLERANCE OR OTHER DETAIL SPECIFIED ON THIS DRAWING NOTIFY THE PURCHASER PROMPTLY.

MC-122

MAXIMUM ALLOWABLE TOLERANCES HAVE BEEN DETERMINED AND DEVIATIONS WILL BE CAUSE FOR REJECTION. REMOVE ALL BURRS AND SHARP EDGES

REQ. PER UNIT

USED ON

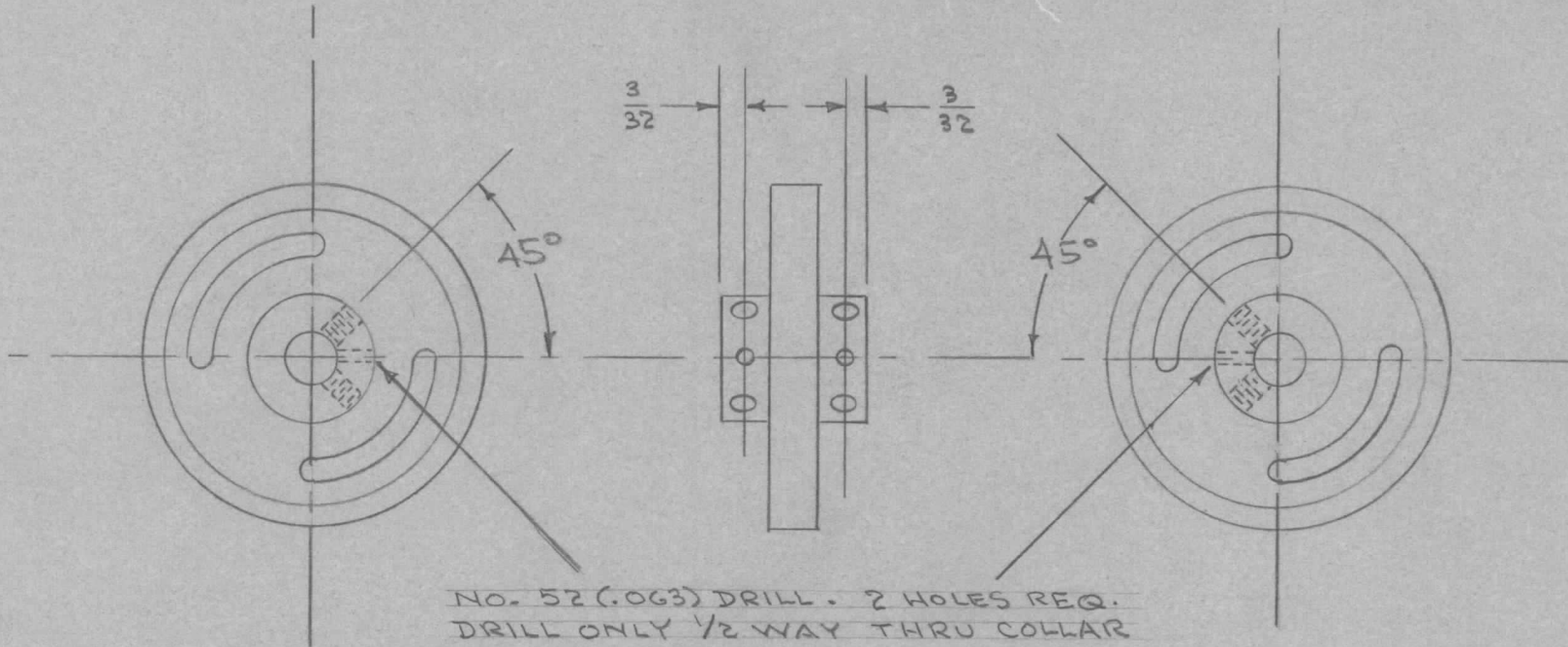
2

MODEL  
TAC-1

PROJECT NO.  
132

ASS'Y. NO.

DATE



MODIFY MC-III

REQ.	ITEM	PART NO.	DESCRIPTION	SYMBOL
			THE TECHNICAL MATERIEL CORP. MAMARONECK, NEW YORK	
		STOCK SIZE		
			COUPLING, FLEXIBLE	
		MATERIAL	WEIGHT PER PC.	(MODIFY MC-III) TAC-1
		TYPE & TEMPER		C.D.D.
				W.D.
			DRAWN	ELEC. DES. APP. MECH. DES. APP.
			J.A.B.	W.D.
		HEAT TREAT. SPEC.	CHECKED	FINAL APPROVAL
				MC-122
		FINISH & SPEC. NO.		

ISSUE	ITEM	CHANGED FROM	DATE	CN. NO.	DRAFTS	CHECKER	ENG. APP.
TOLERANCES			SCALE				
ALL OTHERS	DEC. DIM. ± FRAC. DIM. ± ANGULAR DIM. ±	DRILL, PUNCH, COMMERCIAL STOCK SIZES AND MANUFACTURERS TOLERANCES ARE NOT INCLUDED.					