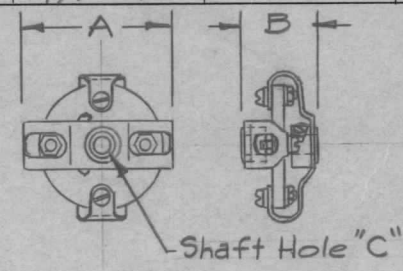
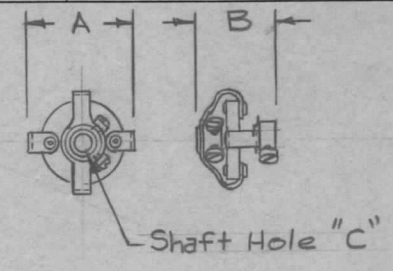


TMC NO.	MFG. NO.	TYPE	A	B	C	DWG.	PEAK VOLT.
MC-114-1	PL-5006	D	2-5/8	1-3/8	1/4 & 3/8	1	9000V.
MC-114-2	PL-5010	F	2-1/16	1-1/16	1/4 & 3/8	1	5000V.
MC-114-3	PL-5202	AB	1-9/32	29/32	1/4	2	5000V.
MC-114-4	PL-5000	A	1-9/32	3/4	1/4	3	3700V.
MC-114-5	PL-5002	B	1-9/32	1-3/32	1/4	4	7000V.
MC-114-6	PL-5004	C	2-5/8	2-3/32	1/4 & 3/8	5	13,500V.
MC-114-7	PL-5008	E	2-1/16	1-3/4	1/4 & 3/8	5	10,000V.

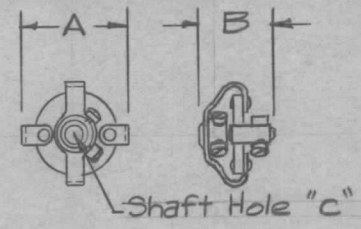
REQ. PER UNIT	USED ON		DATE	MC-114	E
	MODEL	ASS'Y. NO.			
2	TAC-1		5-27-58		



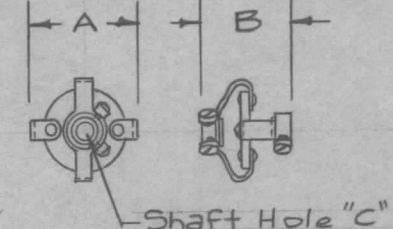
DWG. 1 TYPE D & F



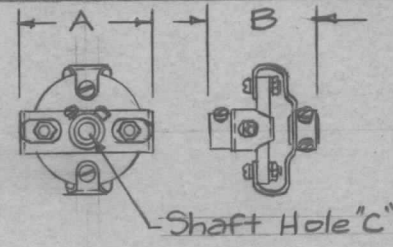
DWG. 2 TYPE AB



DWG. 3 TYPE A



DWG. 4 TYPE B



DWG. 5 TYPE C & E

NOTES:
 1. TYPES C, D, E, & F (Dwg. 1 & 5) FIT BOTH 1/4" D. & 3/8" D. SHAFTS BY REMOVING BUSHING SUPPLIED.
 2. SPRINGS ARE PHOSPHOR BRON.
 3. HUBS ARE BRASS.
 4. FOUR FILLISTER HD. SET SCREWS SUPPLIED BY MFG.

HUB INFO.

1. TYPE A - BOTH HUBS INSIDE SPRINGS.
2. TYPE B - BOTH HUBS OUTSIDE.
3. TYPE AB - ONE HUB INSIDE, ONE HUB OUTSIDE.
4. TYPE C & E - BOTH HUBS OUTSIDE
5. TYPE D & F - BOTH HUBS INSIDE.

REF- A. D. CARDWELL COND. CORP.

ISSUE	ITEM	CHANGED FROM	DATE	CH. NO.	DRAFTS	CHECKER	ENG. APP.
E		NOTE "5" DELE.	8.11.69	1952T	GE	MD	
D	1	NOTE 5 REVISED	11.2.64	12838	WB		
C	1	NOTE 5 ADDED	8.12.64	12111	WB		
B	1	REDWN.-MC-114-4 thru 7 ADDED.-DWGS. 2, 3, 4, 5 ADDED. MC-114-1, 2, 3 SAME	12/16/57	2	KG		

REQ. ITEM	PART NO.	DESCRIPTION	SYMBOL
		THE TECHNICAL MATERIEL CORP. MAMARONECK, NEW YORK	
	STOCK SIZE	COUPLING, FLEXIBLE, INSULATED	
	MATERIAL		
		16 12/13/57	
	TYPE & TEMPER	HEAT TREAT. SPEC. RE-DRAWN	
	FINISH & SPEC. NO.	ELEC. DES. APP. MECH. DES. APP.	

DEC. DIM. ±
 FRAC. DIM. ±
 ANGULAR DIM. ±

SCALE:
 MAXIMUM ALLOWABLE TOLERANCES HAVE BEEN DETERMINED AND ANY DEVIATIONS WILL BE CAUSE FOR REJECTION.
 REMOVE ALL BURRS AND SHARP EDGES

MC-114 E