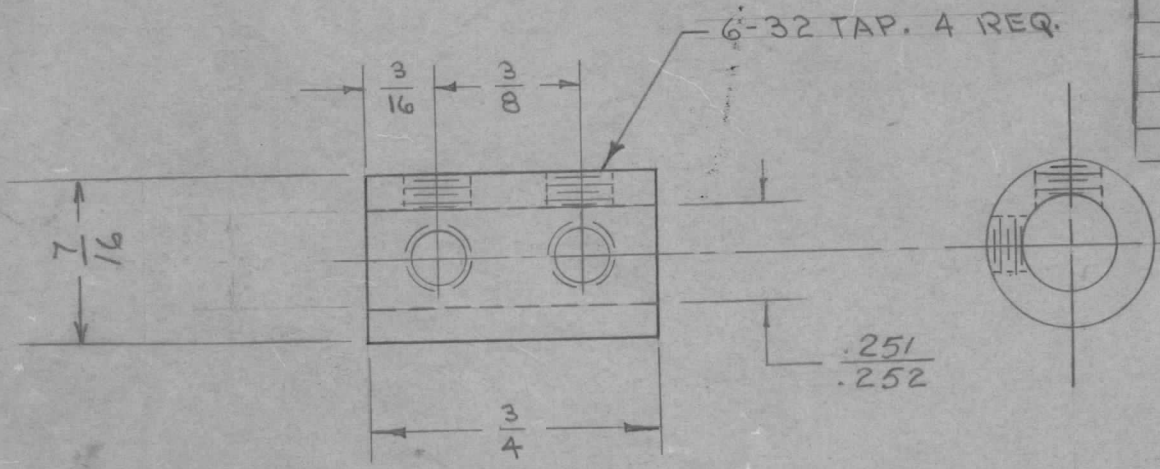


IF IT IS FOUND DESIRABLE TO CHANGE ANY TOLERANCE OR OTHER DETAIL SPECIFIED ON THIS DRAWING NOTIFY THE PURCHASER PROMPTLY.

MAXIMUM ALLOWABLE TOLERANCES HAVE BEEN DETERMINED AND DEVIATIONS WILL BE CAUSE FOR REJECTION. REMOVE ALL BURRS AND SHARP EDGES

MC-102 G

REQ'D. PER UNIT	USED ON			
	MODEL	PROJECT NO.	ASS'Y. NO.	DATE
1	PMO-1	20		9-21-54
	DMK-4	140	A-153	9-20-54
1	PMO-2			9-21-54
1	RTF			2-3-56
1	SBE-2			5-5-58
3	GPR-90			5-12-58
1	SBE-3		AO-101	11-25-59
1	GPR-92		FX-177	10/29/62



NOTICE TO PERSONS RECEIVING THIS DRAWING

THE TECHNICAL MATERIEL CORPORATION claims proprietary right in the material disclosed hereon. This drawing is issued in confidence for engineering information only and may not be reproduced or used to manufacture anything shown hereon without permission from THE TECHNICAL MATERIEL CORPORATION to the user. This drawing is loaned for mutual assistance and is subject to recall at any time.

Property of:

THE TECHNICAL MATERIEL CORPORATION
MAMARONECK, NEW YORK

EACH COUPLING SHAFT TO BE SELECTED WITH BRASS ROD (ANNEAL TO 10021)
S401-89 #4402
S401-8 #138

ISSUE	ITEM	CHANGED FROM	DATE	CN. NO.	DRAFTS	CHECKER	ENG. APP.
G		#138 WAS #1066 AX S135 WAS S105 (FINISH)	1-24-66	15576	HLA	QCB	RC
F	1	VENDOR CODE ADDED	9/25/63	10021	DD	Saz	RC
E	1	NOTE DELETED	12-18-62	7807	MI	MI	RC
D	1	Ref. Was No. 120	8/3/57	4	fc.	fc.	RC
C	1	TOL. DIM. WAS 1/4	10/24/58	3	13	fc.	RC
B	1	NOTE ADDED	4/22/54	2	PB	fc.	RC
A	1	REF. ADDED	7/15/53	1	fc.	fc.	RC

REQ.	ITEM	PART NO.	DESCRIPTION	SYMBOL
			THE TECHNICAL MATERIEL CORP. MAMARONECK, NEW YORK	
			COUPLING, SWITCH SHAFT	
			C.O.D. 9-15-54	
			DRAWN 914.C	
			CHECKED	
			FINAL APPROVAL RC	
			S135-NICKEL PLATE	
			MC-102	G