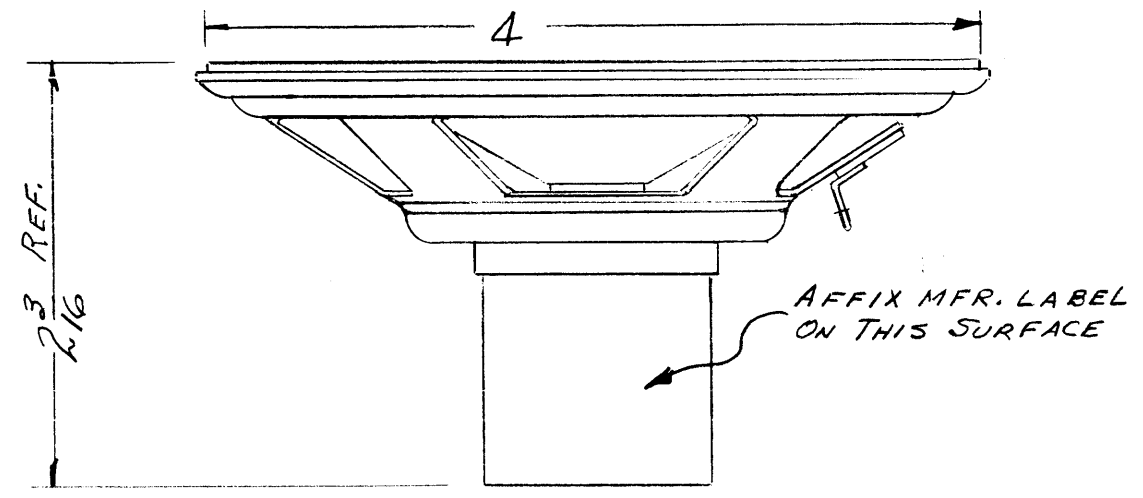
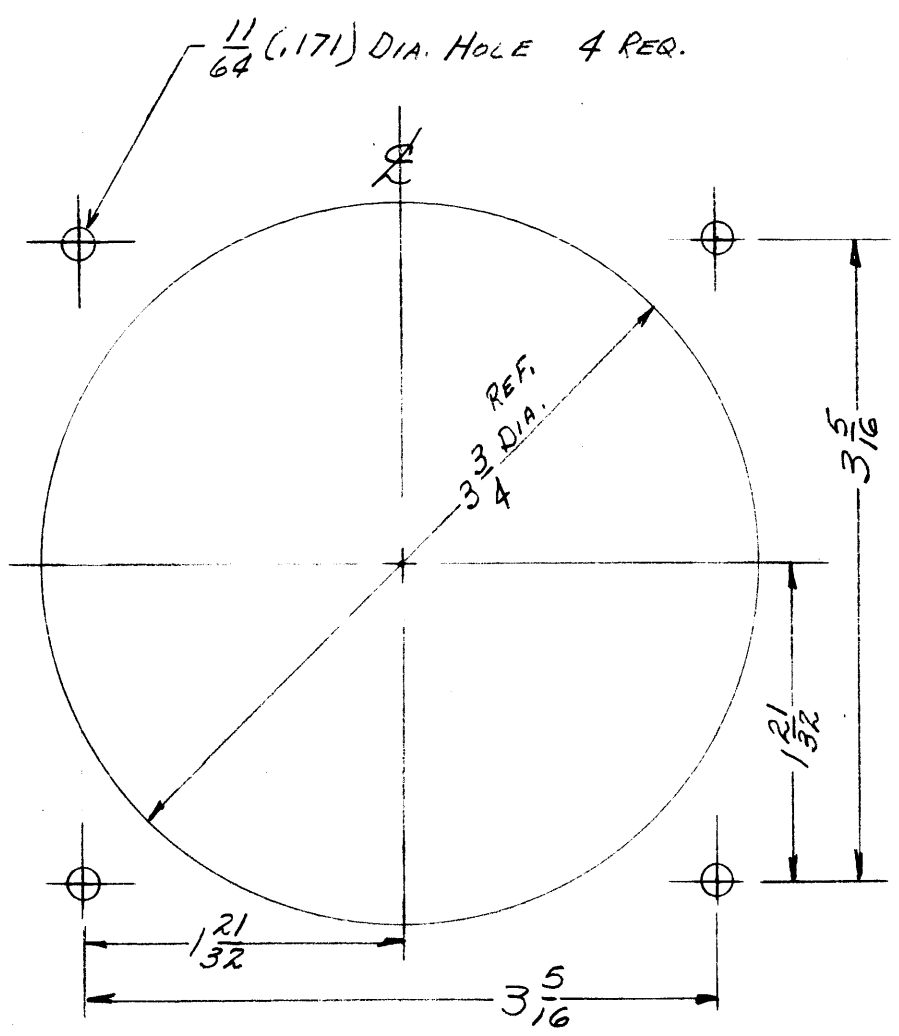
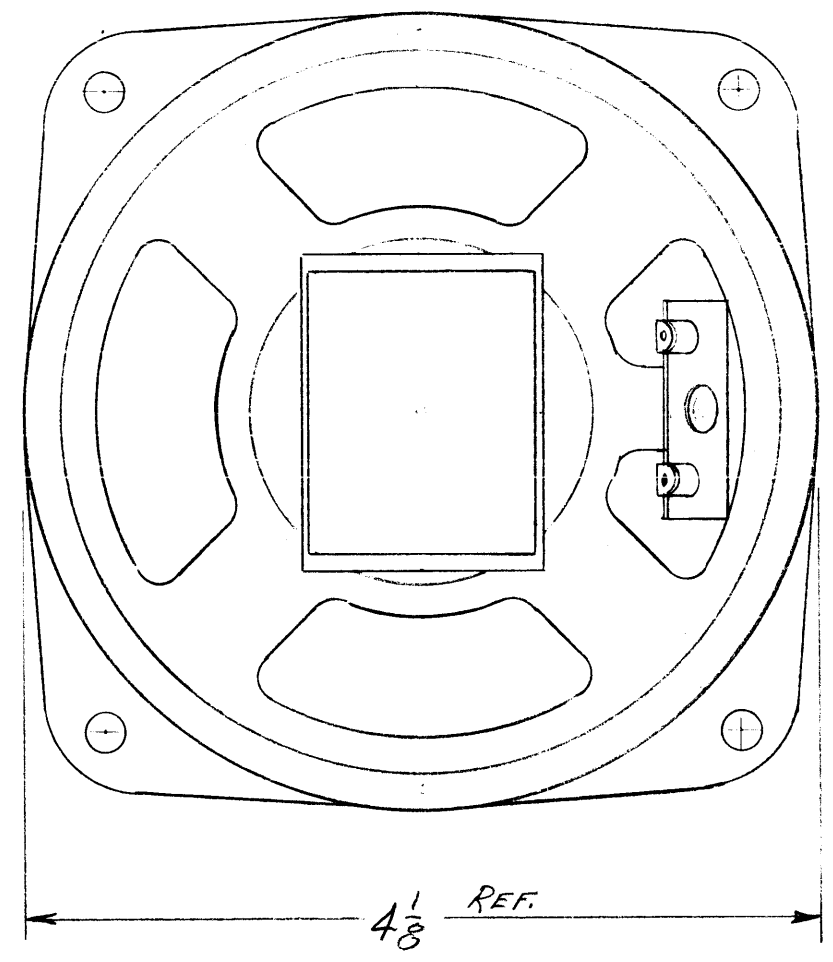


LS-104



V.C. IMPEDANCE - 45 Ω Nom. AT 400 CPS
 POWER - 4 WATTS
 MAGNET - 1.47 OZ.
 WIRE GAUGE - 4706-3
 FIN. RESONANCE - 159 CPS



DRILLING PLAN

NOTICE TO PERSONS RECEIVING THIS DRAWING
 THE TECHNICAL MATERIEL CORPORATION claims proprietary right in the material disclosed hereon. This drawing is issued in confidence for engineering information only and may not be reproduced or used to manufacture anything shown hereon without permission from THE TECHNICAL MATERIEL CORPORATION to the user. This drawing is loaned for mutual assistance and is subject to recall at any time.

Property of:
 THE TECHNICAL MATERIEL CORPORATION
 MAMARONECK, NEW YORK

REF.: JENSEN MODEL PA-VA-SP9266

ISSUE	ITEM	CHANGED FROM	DATE	CH. NO.	DRAFTS	CHECKER	ENG. APP.
TOLERANCES		SCALE: <i>CFO</i>					
DEC. DIM. ±		MAXIMUM ALLOWABLE TOLERANCES HAVE BEEN DETERMINED AND ANY DEVIATIONS WILL BE CAUSE FOR REJECTION. REMOVE ALL BURRS AND SHARP EDGES					
FRAC. DIM. ±							
ANGULAR DIM. ±							

1	RSC-3	PROJECT NO.	ASS'Y. NO.	DATE
REQ. PER UNIT	MODEL	PROJECT NO.	ASS'Y. NO.	DATE
USED ON				

REQ. ITEM	PART NO.	DESCRIPTION	SYMBOL
<i>CFO</i>		THE TECHNICAL MATERIEL CORP. MAMARONECK, NEW YORK	
	STOCK SIZE	LOUDSPEAKER	
	MATERIAL	PERMANENT MAGNET 4"	
<i>CFO</i>	<i>CFO</i>	10-16-58 <i>PLK</i>	<i>JSR</i>
	TYPE & TEMPER	DRAWN	CHECKED
	HEAT TREAT. SPEC.	<i>PLK</i>	<i>Mo</i>
	FINISH & SPEC. NO.	ELEC. DES. APP.	MECH. DES. APP.
			LS-104