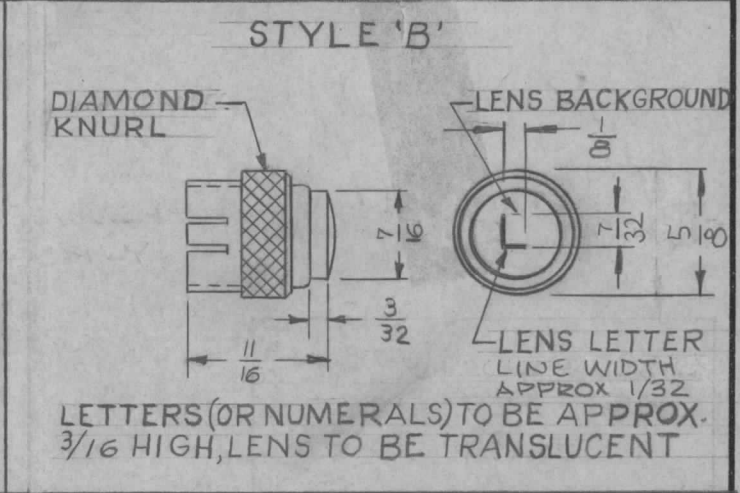
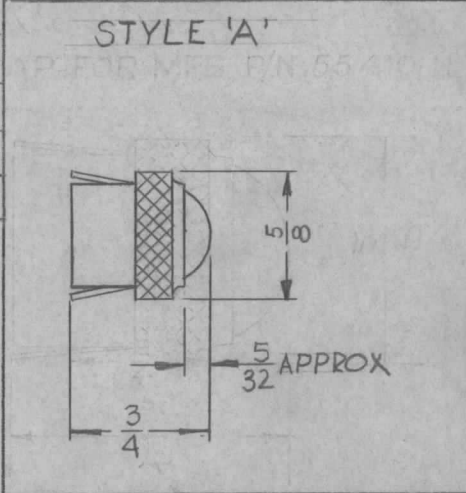


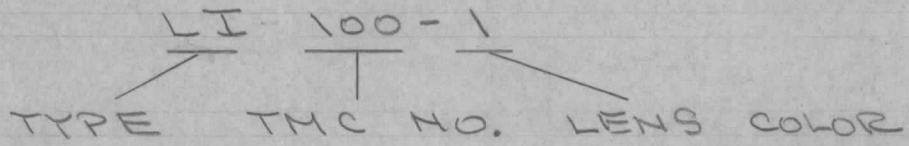
COLOR	COLOR CODE	STYLE	*MFGS LENS CODE
RED	1	A	.0111
GREEN	2	A	.0112
AMBER	3	A	.0113
BLUE	4	A	.0114
WHITE (TRANSLUCENT)	5	A	.0115
YELLOW	6	A	.0116
CLEAR	7	A	.0137
YELLOW, BLK. LETTER 'L'	8	B	.0376
YELLOW, BLK. LETTER 'U'	9	B	.0376

REQ. PER UNIT	USED ON		
	MODEL	ASS'Y. NO.	DATE
			LI 100 C

STANDARD DRAWING



TYPE DESIGNATION TO BE IN THE FOLLOWING FORM



MANUFACTURERS PART NUMBER

55-*100

— INSERT LENS CODE

NOTE:
DIMENSIONS FOR REF ONLY

NOTE:
THIS ITEM FOR SPARE PARTS & MAINTENANCE

ISSUE	ITEM	CHANGED FROM	DATE	CH. NO.	DRAFTS	CHECKER	ENG. APP.
C		DEWG REVISED	5-9-66	16224	WHW	JCB	JCB
B	3	S-401-153 ADDED; DIAL CO. DELETED; STYLE 'B' ADDED; STYLE COLUMN ADDED; CODE B & 9 ADDED; 55410-11 WAS 87410-11	4/27/64	11293	A.M.	@	
A	1	METAL FINISH W.H. NICKEL ADDED	5-27-63	2368	WHW	JCB	
TOLERANCES			SCALE: S401-153				
DEC. DIM. ± FRAC. DIM. ± ANGULAR DIM. ±			MAXIMUM ALLOWABLE TOLERANCES HAVE BEEN DETERMINED AND ANY DEVIATIONS WILL BE CAUSE FOR REJECTION. REMOVE ALL BURRS AND SHARP EDGES				

REQ. ITEM	PART NO.	DESCRIPTION	SYMBOL
		THE TECHNICAL MATERIEL CORP. MAMARONECK, NEW YORK	
	STOCK SIZE	CAP, LENS P/O TS 106	
	MATERIAL		
	TYPE & TEMPER	DRAWN	FINAL APPROVAL
	HEAT TREAT. SPEC.	CHECKED	
	METAL: WHITE NICKEL		LI 100 C
	FINISH & SPEC. NO.	ELEC. DES. APP.	MECH. DES. APP.

TMC NO.	DIALCO NO.	LENS BACK-GROUND COLOR	LENS LETTER COLOR
LI-101-1	55246-376-	YELLOW	BLACK
LI-101-2			
LI-101-3			
LI-101-4			
LI-101-5			

STANDARD DRAWING

REQ. PER UNIT	USED ON			LI-101	C
	MODEL	ASS'Y. NO.	DATE		

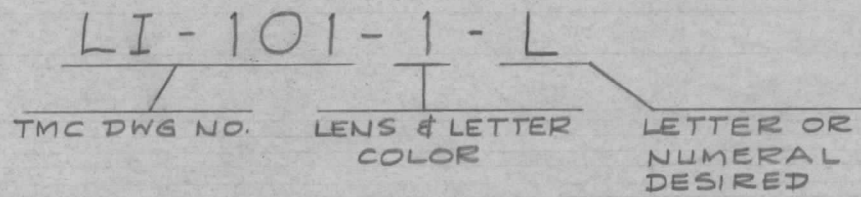
BUSHING.

LENS LETTER
LENS BACKGROUND

- LETTERS (OR NUMERALS) TO BE APPROX. $\frac{3}{16} \pm \frac{1}{64}$ HIGH.
 - LENS TO BE TRANSLUCENT
 - DIM. FOR REF. ONLY.

Note - One Hex Nut & One Internal Lockwasher for mounting to be supplied by manufacturer.
 * FOR LENS WITHOUT BUSHING SEE LI-100

Type Designation to be as follows:



For TMC Socket No. TS-133

Ref DIALCO

ISSUE	ITEM	CHANGED FROM	DATE	CH. NO.	DRAFTS	CHECKER	ENG. APP.
C		TOL $\pm \frac{1}{64}$ ADDED	9-28-64	18530	H.G.	<i>[Signature]</i>	FBJ
B	2	NOTES: * FOR LENS ETC. ADDED	4-27-64	11293	AM	<i>[Signature]</i>	<i>[Signature]</i>
A	1	FINISH ADDED	4-4-64	8706	RC	<i>[Signature]</i>	<i>[Signature]</i>

TOLERANCES		SCALE:	
DEC. DIM. \pm		MAXIMUM ALLOWABLE TOLERANCES HAVE BEEN DETERMINED AND ANY DEVIATIONS WILL BE CAUSE FOR REJECTION.	
FRAC. DIM. \pm		REMOVE ALL BURRS AND SHARP EDGES	
ANGULAR DIM. \pm			

REQ. ITEM	PART NO.	DESCRIPTION	SYMBOL
		THE TECHNICAL MATERIEL CORP. MAMARONECK, NEW YORK	
	STOCK SIZE	LENS, LAMP	
	MATERIAL		
	TYPE & TEMPER	HEAT TREAT. SPEC.	
	CHROMIUM PLATE	FINISH & SPEC. NO.	
		DRAWN	CHECKED
		ELEC. DES. APP.	MECH. DES. APP.

16^{9/19/58} *[Signature]* *[Signature]*
 LI-101 C

THE CONTENTS OF THIS DRAWING ARE THE EXCLUSIVE PROPERTY OF THE TECHNICAL MATERIEL CORP. ITS UNAUTHORIZED USE OR REPRODUCTION IN WHOLE OR IN PART IS STRICTLY FORBIDDEN.

REQ. PER UNIT

USED ON

MODEL

ASS'Y. NO.

DATE

10-24-61

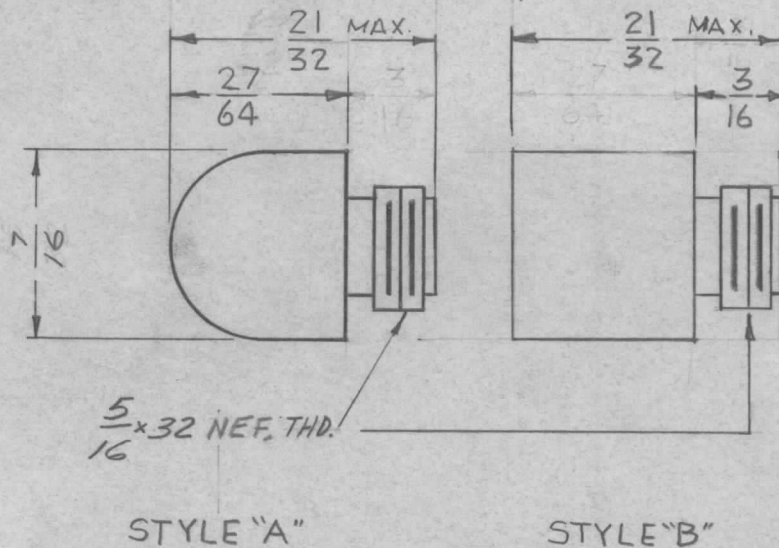
LI-102

B

NOTE:

STANDARD DRAWING

- LENSES ARE TRANSPARENT EXCEPT FOR LI 102-5 WHICH IS TRANSLUCENT.
- LI 102-1 SHALL HAVE A MINIMUM TRANSMISSION OF 0.070 AT 2360°K.
- MATING LENS FOR SOCKET TS 153 FOR SPARE PARTS USE ONLY.
- FOR BULB SHIELD SEE PO 230-1



REF: TS 153

STYLE	TMC PART NO.	MFG. NO.	LENS COLOR
A	LI-102-1	162-0931-502	IDENTIFICATION RED
A	LI 102-2	162-0932-502	IDENTIFICATION GREEN
A	LI-102-3	162-0933-502	AVIATION YELLOW
A	LI 102-4	162-0934-502	AVIATION BLUE
A	LI 102-5	162-0935-502	AVIATION WHT. DIFFUSING
A	LI 102-6	NOT AVAILABLE	
A	LI 102-7	162-0937-502	COLORLESS
B	LI 102-8	162-8430-1471-502	IDENT. RED
B	LI 102-9	162-8430-1472-502	IDENT. GREEN
B	LI 102-10	162-8430-1473-502	AVIA. YELLOW
B	LI 102-11	162-8430-1474-502	AVIA. BLUE
B	LI 102-12	162-8430-1475-502	AVIA. WHT. DIFFUSING
B	LI 102-13	162-8430-1476-502	LIGHT YELLOW
B	LI 102-14	162-8430-1477-502	COLORLESS

EXCEPT FOR LI-102-5 WHICH IS TRANSLUCENT.

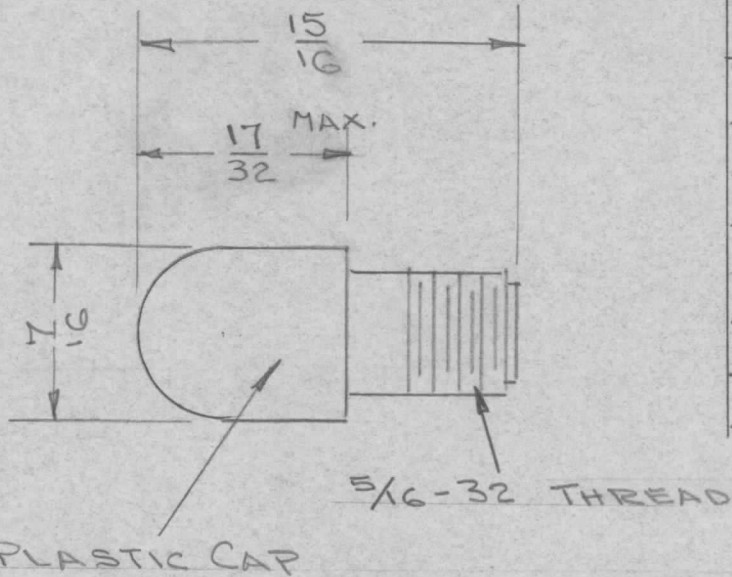
LENSES ARE TRANSPARENT EXCEPT FOR LI-102-5 WHICH IS TRANSLUCENT.

LI 102-1 SHALL HAVE A MINIMUM TRANSMISSION OF 0.070 AT 2360°K.

REQ.	ITEM	PART NO.	DESCRIPTION	SYMBOL
B	STYLE "B" ADDED & PART NO. 8 THRU 14 ADDED	10, 30, 67 18579	NEG. <i>WY</i> EFM	
A	COMPLETELY REVISED	11/14/65 15192	F.V. <i>gcb</i> <i>g</i>	
UNLESS OTHERWISE SPECIFIED:		SCALE: 5401-153 (162)		
DIMENSIONS ARE IN INCHES.		MAXIMUM ALLOWABLE TOLERANCES HAVE BEEN DETERMINED AND ANY DEVIATIONS WILL BE CAUSE FOR REJECTION.		
TOLERANCES ON		REMOVE ALL BURRS AND SHARP EDGES		
FRAC. ± 1/64 DEC. ± .005 ANGLES ± 1/2°				
		TYPE & TEMPER	HEAT TREAT. SPEC.	DRAWN
				CHECKED
				FINAL APPROVAL
		FINISH & SPEC. NO.		ELEC. DES. APP. MECH. DES. APP.
				LI-102 B

THE CONTENTS OF THIS DRAWING ARE THE EXCLUSIVE PROPERTY OF THE TECHNICAL MATERIEL CORP. ITS UNAUTHORIZED USE OR REPRODUCTION IN WHOLE OR IN PART IS STRICTLY FORBIDDEN.

REQ. PER UNIT	USED ON			LI-103
	MODEL	ASS'Y. NO.	DATE	
	Stand.		10-30-61	



TMC PART NO.	MFG. NO.	LENS COLOR	MILITARY EQUIV.
LI-103-1	137-931	RED	
LI-103-2	NOT AVAILABLE	NOT AVAILABLE	
LI-103-3	137-933	YELLOW (AMBER)	
LI-103-4	NOT AVAILABLE	NOT AVAILABLE	
LI-103-5	137-935	WHITE	
LI-103-6	137-936	LIGHT YELLOW	
LI-103-7	137-937	CLEAR (COLORLESS)	

NOTE:

DIMENSIONS FOR REF ONLY

NOTE:

MATING LENS FOR SOCKER TS-154 FOR SPARE PARTS USE ONLY.

STANDARD DRAWING

REQ.	ITEM	PART NO.	DESCRIPTION				SYMBOL	
			THE TECHNICAL MATERIEL CORP. MAMARONECK, NEW YORK					
			STOCK SIZE					
			LENS, INDICATOR, LIGHT					
			MATERIAL					
SYM	DESCRIPTION	DATE	CH. NO.	DRAFTS	CHECKER	ENG. APP.		
UNLESS OTHERWISE SPECIFIED: DIMENSIONS ARE IN INCHES. TOLERANCES ON FRAC. $\pm 1/64$ DEC. $\pm .005$ ANGLES $\pm 1/2^\circ$		SCALE: S401-153						
		MAXIMUM ALLOWABLE TOLERANCES HAVE BEEN DETERMINED AND ANY DEVIATIONS WILL BE CAUSE FOR REJECTION. REMOVE ALL BURRS AND SHARP EDGES						
		TYPE & TEMPER	HEAT TREAT. SPEC.	DRAWN	CHECKED	FINAL APPROVAL		
				<i>W.S.</i> 10-25-61	<i>RUZZO</i>	<i>SAM</i>		
		FINISH & SPEC. NO.		<i>[Signature]</i>	<i>[Signature]</i>	LI-103		
				ELEC. DES. APP.	MECH. DES. APP.			

STANDARD DRAWING

THE CONTENTS OF THIS DRAWING ARE THE EXCLUSIVE PROPERTY OF THE TECHNICAL MATERIEL CORP. ITS UNAUTHORIZED USE OR REPRODUCTION IN WHOLE OR IN PART IS STRICTLY FORBIDDEN.

REQ. PER UNIT

USED ON

MODEL

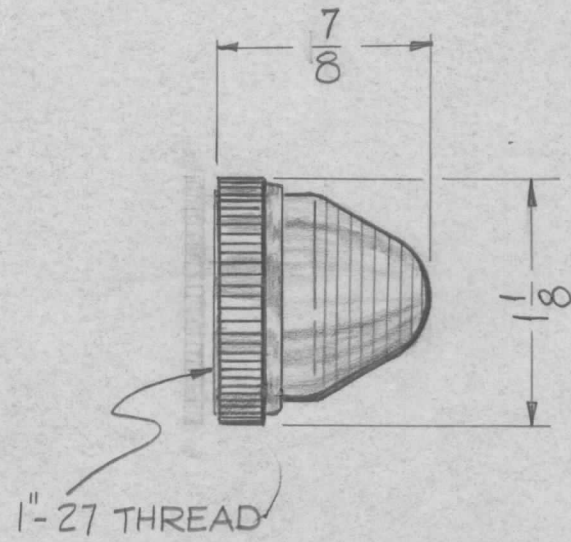
ASS'Y. NO.

DATE

6-13-62

LI-104

TMC PART NO	MFR #	COLOR
LI-104 - 1	80-531	RED
LI-104 - 2	80-532	GREEN
LI-104 - 3	80-533	AMBER
LI-104 - 4	80-534	BLUE
LI-104 - 5	80-535	WHITE (Translucent)
LI-104 - 6	80-536	YELLOW
LI-104 - 7	80-537	CLEAR



FOR USE ON TS-124

REQ.	ITEM	PART NO.	DESCRIPTION	SYMBOL						
			THE TECHNICAL MATERIEL CORP. MAMARONECK, NEW YORK							
			STOCK SIZE							
			GLASS							
			MATERIAL							
SYM	DESCRIPTION	DATE	CH. NO.	DRAFTS	CHECKER	ENG. APP.				
UNLESS OTHERWISE SPECIFIED: DIMENSIONS ARE IN INCHES TOLERANCES ON FRAC. $\pm 1/64$ DEC. $\pm .005$ ANGLES $\pm 1/2^\circ$		SCALE: S-401-153								
		MAXIMUM ALLOWABLE TOLERANCES HAVE BEEN DETERMINED AND ANY DEVIATIONS WILL BE CAUSE FOR REJECTION. REMOVE ALL BURRS AND SHARP EDGES		TYPE & TEMPER		HEATTREAT. SPEC.		DRAWN	CHECKED	FINAL APPROVAL
				FINISH & SPEC. NO.		ELEC. DES. APP.		MECH. DES. APP.	LI-104	

THE CONTENTS OF THIS DRAWING ARE THE EXCLUSIVE PROPERTY OF THE TECHNICAL MATERIEL CORP. ITS UNAUTHORIZED USE OR REPRODUCTION IN WHOLE OR IN PART IS STRICTLY FORBIDDEN.

REQ. PER UNIT

USED ON

MODEL

ASS'Y. NO.

DATE

Standard

5-24-62

LI-105

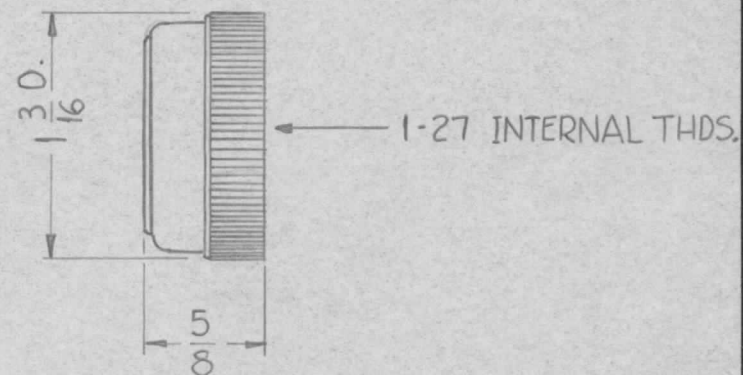
TMC PART NO.	MFR. PART NO.	LENS TYPE	LENS COLOR	USED ON TMC INDICATOR LIGHT NO.
LI-105-1N	104-231	Unfrosted	Red	TS-136-1N
LI-105-2N	104-232	Unfrosted	Green	TS-136-2N
LI-105-3N	104-233	Unfrosted	Amber	TS-136-3N
LI-105-4N	104-234	Unfrosted	Blue	TS-136-4N
LI-105-5N	104-235	Unfrosted-Translucent	White	TS-136-5N
LI-105-6N	104-236	Unfrosted	Yellow	TS-136-6N
LI-105-7N	104-237	Unfrosted	Clear	TS-136-7N
LI-105-1F	104-211	Back Frosted	Red	TS-136-1F
LI-105-2F	104-212	Back Frosted	Green	TS-136-2F
LI-105-3F	104-213	Back Frosted	Amber	TS-136-3F
LI-105-4F	104-214	Back Frosted	Blue	TS-136-4F
LI-105-6F	104-216	Back Frosted	Yellow	TS-136-6F
LI-105-7F	104-217	Back Frosted	Clear	TS-136-7F

SPECIFICATIONS:

Lens - Flat Type

Material - Glass

Lens Holder - Brass, Polished Chrome



REQ.	ITEM	PART NO.	DESCRIPTION	SYMBOL							
			THE TECHNICAL MATERIEL CORP. MAMARONECK, NEW YORK								
			STOCK SIZE								
			LENS, INDICATOR LIGHT, FLAT TYPE								
			MATERIAL								
SYM	DESCRIPTION	DATE	CH. NO.	DRAFTS	CHECKER	ENG. APP.	DRAWN	CHECKED	FINAL APPROVAL		
UNLESS OTHERWISE SPECIFIED: DIMENSIONS ARE IN INCHES TOLERANCES ON FRAC. ± 1/64 DEC. ± .005 ANGLES ± 1/2°		SCALE: MAXIMUM ALLOWABLE TOLERANCES HAVE BEEN DETERMINED AND ANY DEVIATIONS WILL BE CAUSE FOR REJECTION. REMOVE ALL BURRS AND SHARP EDGES					TYPE & TEMPER	HEATTREAT. SPEC.	DRAWN	CHECKED	FINAL APPROVAL
										LI-105	
							FINISH & SPEC. NO.	ELEC. DES. APP.	MECH. DES. APP.		

STANDARD DRAWING

THE CONTENTS OF THIS DRAWING ARE THE EXCLUSIVE PROPERTY OF THE TECHNICAL MATERIEL CORP. ITS UNAUTHORIZED USE OR REPRODUCTION IN WHOLE OR IN PART IS STRICTLY FORBIDDEN.

REQ. PER UNIT

USED ON

MODEL
Standard

ASS'Y. NO.

DATE

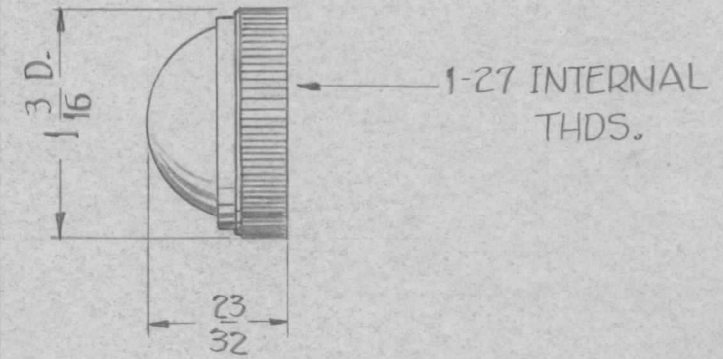
5-24-62

LI-106

TMC PART NO.	MFR. PART NO.	LENS TYPE	LENS COLOR	USED ON TMC INDICATOR LIGHT NO.
LI-106-1N	103-1231	Unfrosted	Red	TS-137-1N
LI-106-2N	103-1232	Unfrosted	Green	TS-137-2N
LI-106-3N	103-1233	Unfrosted	Amber	TS-137-3N
LI-106-4N	103-1234	Unfrosted	Blue	TS-137-4N
LI-106-5N	103-1235	Unfrosted-Translucent	White	TS-137-5N
LI-106-6N	103-1236	Unfrosted	Yellow	TS-137-6N
LI-106-7N	103-1237	Unfrosted	Clear	TS-137-7N
LI-106-1F	103-1211	Back Frosted	Red	TS-137-1F
LI-106-2F	103-1212	Back Frosted	Green	TS-137-2F
LI-106-3F	103-1213	Back Frosted	Amber	TS-137-3F
LI-106-4F	103-1214	Back Frosted	Blue	TS-137-4F
LI-106-6F	103-1216	Back Frosted	Yellow	TS-137-6F
LI-106-7F	103-1217	Back Frosted	Clear	TS-137-7F

SPECIFICATIONS:

Lens - Dome Type
 Material - Glass
 Lens Holder - Brass, Polished Chrome



REF: DIALCO

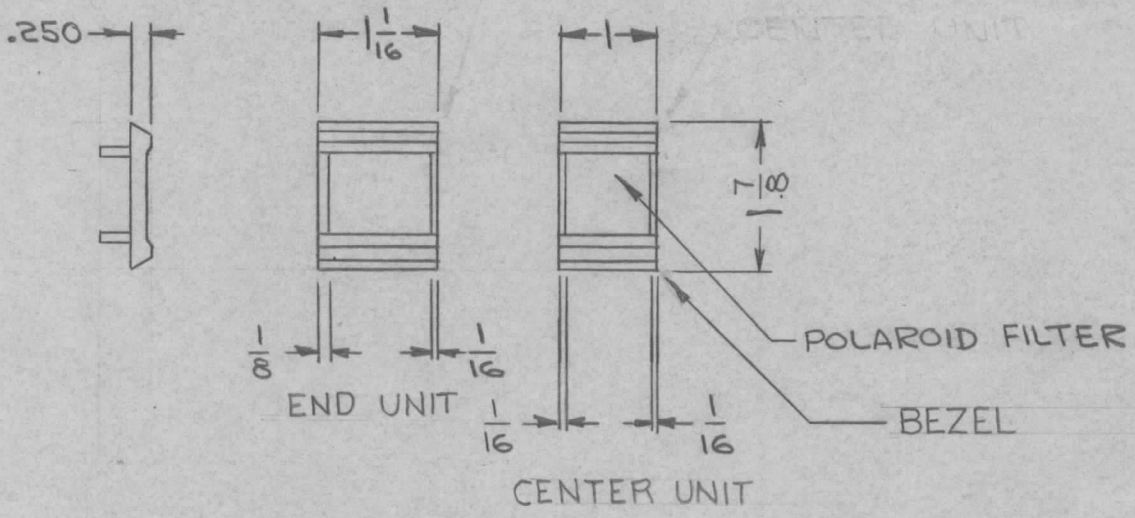
REQ.	ITEM	PART NO.	DESCRIPTION	SYMBOL					
			THE TECHNICAL MATERIEL CORP. MAMARONECK, NEW YORK						
			LENS, INDICATOR LIGHT, DOME TYPE						
SYM	DESCRIPTION	DATE	CH. NO.	DRAFTS	CHECKER	ENG. APP.			
UNLESS OTHERWISE SPECIFIED: DIMENSIONS ARE IN INCHES TOLERANCES ON FRAC. ± 1/64 DEC. ± .005 ANGLES ± 1/2°		SCALE: MAXIMUM ALLOWABLE TOLERANCES HAVE BEEN DETERMINED AND ANY DEVIATIONS WILL BE CAUSE FOR REJECTION. REMOVE ALL BURRS AND SHARP EDGES		TYPE & TEMPER		HEATTREAT. SPEC.	DRAWN	CHECKED	FINAL APPROVAL
				FINISH & SPEC. NO.		ELEC. DES. APP.	MECH. DES. APP.	LI-106	

STANDARD DRAWING

REQ. PER UNIT	USED ON		LI108	Ø
	MODEL	ASS'Y. NO.		
	RTIU-1		9-8-64	

TMC PART No.	MFG PART No.	STYLE	POLAROID FILTER
LI108-1	951011	END	TRANSPARENT RED
LI108-2	951012	CENTER	TRANSPARENT RED

MATERIAL -
 BEZEL: GLASS FILLED NYLON
 FINISH - BLACK
 FILTER: POLAROID
 COLOR: RED

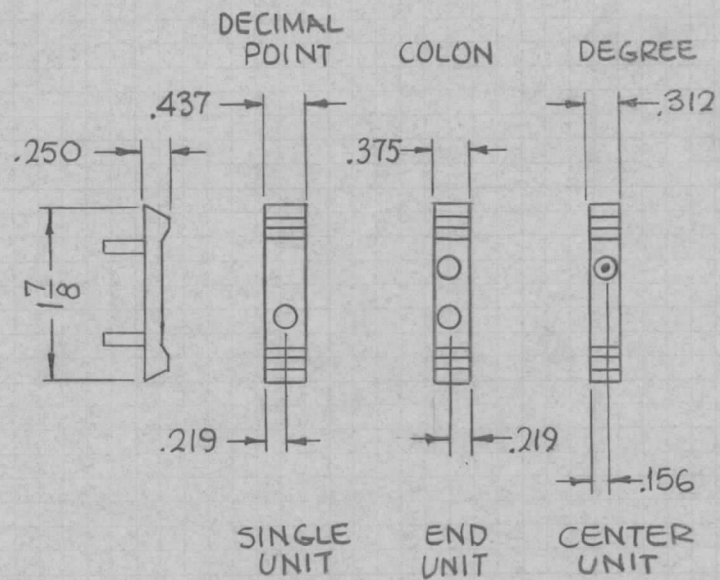


NOTE:
 BEZEL USED WITH IC101

REQ. ITEM	PART NO.	EATON	DESCRIPTION	SYMBOL							
	A		THE TECHNICAL MATERIEL CORP. MAMARONECK. NEW YORK								
Ø	ORIGINAL RELEASE FOR PRODUCTION	9-11-64	Ø	PL							
X	EXPER. RELEASE	9-8-64	X	9/8/64							
SYM	DESCRIPTION	DATE	CH. NO.	DRAFTS	CHECKER	ENG. APP.	MATERIAL				
UNLESS OTHERWISE SPECIFIED DIMENSIONS ARE IN INCHES AND INCLUDE CHEMICALLY APPLIED OR PLATED FINISHES		SCALE	4				TYPE & TEMPER	HEAT TREAT. SPEC.	DRAWN	CHECKED	FINAL APPROVAL
DECIMALS .X ± .05 .XX ± .01 .XXX ± .005	TOLERANCES	FRACTIONS ± 1/64 ANGLES ± 0° 30'	CODE C	5401-318			FINISH & SPEC. NO.	ELEC. DES. APP.	MÉCH. DES. APP.	LI108	Ø

STANDARD DRAWING

TMC P/N	SYMBOL	STYLE	WIDTH		REQ. PER UNIT	USED ON			LI109	Ø
						MODEL	ASS'Y. NO.	DATE		
LI 109-1	DECIMAL	CENTER UNIT	.312			RTIA -1		10-22-64		

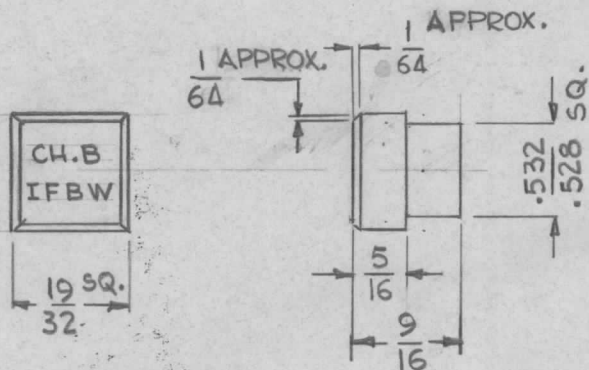


SPECIFICATIONS
 MATERIAL ~ BLACK PLASTIC
 BEAD COLOR ~ RED
 USED WITH ~ TS176

	REQ. ITEM	PART NO.	DESCRIPTION	SYMBOL
Ø	ORIGINAL RELEASE FOR PRODUCTION	10-28-64	Ø P.F.	
X	EXP. RELEASE	10-22-64	X SRG	
SYM	DESCRIPTION	DATE	CH. NO.	DRAFTS
UNLESS OTHERWISE SPECIFIED DIMENSIONS ARE IN INCHES AND INCLUDE CHEMICALLY APPLIED OR PLATED FINISHES		SCALE		
DECIMALS	TOLERANCES	FRACTIONS	CODE	
.X ± .05		± 1/64	C	S401-318 (DPL)
.XX ± .01		ANGLES		
.XXX ± .005		± 0° 30'		
		TYPE & TEMPER	HEAT TREAT. SPEC.	
		FINISH & SPEC. NO.	ELEC. DES. APP.	MECH. DES. APP.
		SRG	@ 10-27-64	RRC
			9C 10/27/64	LI109

SPECIFICATIONS

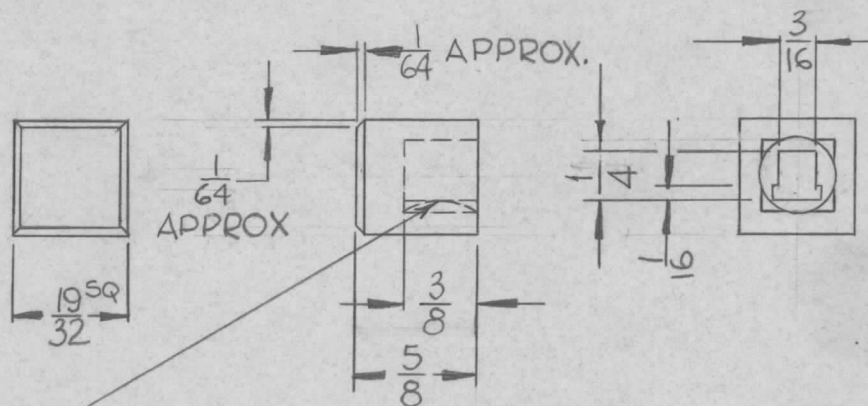
COLOR: WHITE
 TRANSMITTANCE: TRANSLUCENT
 NON-ROTATING: YES
 RETENTION: SEE NOTE 1 & 2
 MAXIMUM TEMPERATURE: 130°F (54.5°C)
 ENGRAVING: HORIZ. (AS SHOWN) 3/32 HIGH
 BLACK GOTHIC
 USED FOR SPARE PARTS OF PUSH BUTTON
 ROW SWITCHES.



TYPE 1

NOTE 1
 RETENTION = SNAP-IN

REQ. PER UNIT	USED ON			LI-111	B
	MODEL	ASS'Y. NO.	DATE		
			6-15-65		



RETAINING SPRING

NOTE 2
 RETENTION: FRICTION FIT
 TYPE 2

TMC PART NUMBER SHALL BE IN THE FOLLOWING FORM:

LI 111-1 - CH. B / IFBW

BASIC PART NO.	TYPE	ENGRAVING (SLASH INDICATES THE BEGINNING OF ANOTHER LINE AS SHOWN)
NOTE: BUTTON BLANK WHEN ENGRAVING SUFFIX OMITTED		

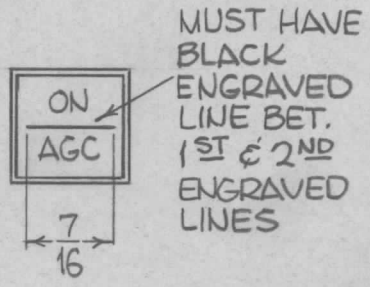
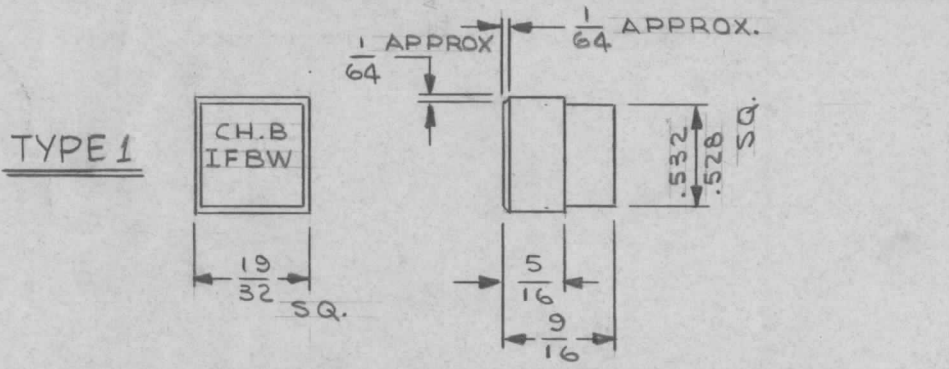
ENGRAVING REF: MIL-STD-12 (AS APPLICABLE)

REQ. ITEM	PART NO.	EATON	DESCRIPTION	SYMBOL		
B	MFG CODE No. WAS-378	12.2.66	CC	WFO	QC/B	
A	NOTES ADDED, TYPE 2 ADDED, TITLE CLARIFIED	5-2-66	16195	WFO	QC/B	
Ø	ORIGINAL RELEASE FOR PRODUCTION	6-17-65	—	JC		
SYM	DESCRIPTION	DATE	CH. NO.	DRAFTS	CHECKER	ENG. APP.
UNLESS OTHERWISE SPECIFIED DIMENSIONS ARE IN INCHES AND INCLUDE CHEMICALLY APPLIED OR PLATED FINISHES		SCALE		1:1		
DECIMALS .X ± .05 .XX ± .01 .XXX ± .004	TOLERANCES	FRACTIONS ± 1/64 ANGLES ± 0° 30'	CODE	S401-365		
STOCK SIZE		ACRYLIC PLASTIC		THE TECHNICAL MATERIEL CORP. MAMARONECK, NEW YORK		
MATERIAL		G-D.L		LENS, INDICATOR, ENGRAVED		
TYPE & TEMPER	HEAT TREAT. SPEC.	DRAWN	CHECKED	FINAL APPROVAL		
FINISH & SPEC. NO.		ELEC. DES. APP.	MECH. DES. APP.	LI-111 B		

SPECIFICATIONS

COLOR: WHITE
 TRANSMITTANCE: TRANSLUCENT
 NON-ROTATING: YES
 RETENTION: SNAP-IN
 MAXIMUM TEMPERATURE: 130°F (54.5°C)
 ENGRAVING: HORIZ. (AS SHOWN), AS PER TMC SPEC. S566.
 1/8 HIGH GOTHIC BLACK FILL FOR ONE OR TWO LINES.
 3/32 HIGH GOTHIC BLACK FILL FOR THREE LINES.
 USED FOR SPARE PARTS OF PUSH BUTTON ROW SWITCHES.

REQ. PER UNIT	USED ON			LI 113	A
	MODEL	ASS'Y. NO.	DATE		
	RTP (*)				



MUST HAVE BLACK ENGRAVED LINE BET. 1ST & 2ND ENGRAVED LINES

NOTE - ALL DIMENSIONS SAME AS TYPE I
TYPE 2

TYPE 3 SAME AS TYPE 1 WITH NO ENGRAVING

TMC PART NUMBER SHALL BE IN THE FOLLOWING FORM:

LI 113 - X - CH. B / IFBW
 BASIC P/N TYPE ENGRAVING
 (SLASH INDICATES THE BEGINNING OF ANOTHER LINE AS SHOWN)

ENGRAVING REF: MIL-STD-12 (AS APPLICABLE)

REQ. ITEM	PART NO.	DESCRIPTION	SYMBOL
		THE TECHNICAL MATERIEL CORP. MAMARONECK. NEW YORK	
	STOCK SIZE		
	ACRYLIC PLASTIC	LENS, INDICATOR LIGHT, ENGRAVED	
	MATERIAL		
		JADe	JDe 12/1/65
	TYPE & TEMPER	HEAT TREAT. SPEC.	DRAWN CHECKED FINAL APPROVAL
	FINISH & SPEC. NO.	ELEC. DES. APP.	MECH. DES. APP.
			LI 113 A

UNLESS OTHERWISE SPECIFIED DIMENSIONS ARE IN INCHES AND INCLUDE CHEMICALLY APPLIED OR PLATED FINISHES

SCALE 1/1

DECIMALS .X ± .05 .XX ± .01 .XXX ± .005

FRACTIONS ± 1/64 ANGLES ± 0° 30'

TOLERANCES

CODE C

S401-378

TMC P/N	MFG. P/N	COLOR	MATERIAL	TEMP.
LI114 - W	01-95191	WHITE	TENITE	140-160°F
LI114 - R	01-900823	RED	"	"
LI114 - G	01-900824	GREEN	"	"
LI114 - B	01-951914	BLUE	PLEXIGLAS	160-180°F
LI114 - A	01-951916	AMBER	"	"

REQ. PER UNIT	USED ON		
	MODEL	ASS'Y. NO.	DATE

LI 114

SPECIFICATIONS

ILLUMINATION : TRANSLUSCENT SOLID COLORED.
COLOR VISIBLE IN UNLIT CONDITION.

MATERIAL : SEE CHART

TEMP. RANGE : SEE CHART

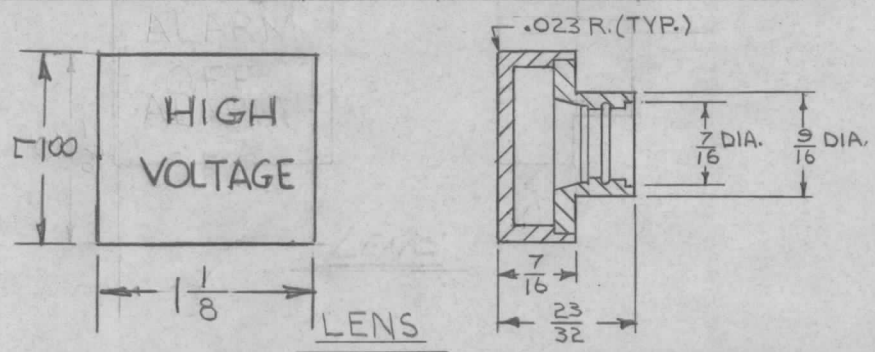
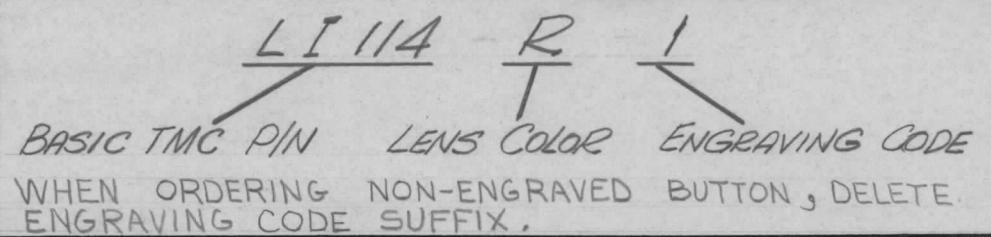
ENGRAVING : 1/8 HIGH GOTHIC, WIDTH OF STROKE .020, BLACK FILL. CHARACTORS MAY BE ENGRAVED OR HOT STAMPED

MAX. CHARACTERS PER LINE : 8

MAX. NUMBER OF LINES : 4

USED WITH : TS184

TMC PART NO. TO BE IN FOLLOWING FORM:



ENGRAVING CODE	
1	HIGH VOLTAGE
2	READY
3	ALARM OFF

SYM	DESCRIPTION	DATE	CH. NO.	DRAFTS	CHECKER	ENG. APP.
Ø	ORIGINAL RELEASE FOR PRODUCTION	12/1/66	#	lflb		Jude
X3	MFG. PART NOS CHANGED	11/28/66	X3	RE		Jude
X2	DIM. 1 1/8 & 7/8 REVERSED	8/29/66	#	Jc		Jc
X1	ENGRAVING CODE CHART #3 WAS "ALARM OFF"	8/22/66	#	Jc		Jc

UNLESS OTHERWISE SPECIFIED DIMENSIONS ARE IN INCHES AND INCLUDE CHEMICALLY APPLIED OR PLATED FINISHES

SCALE: #

TOLERANCES: DECIMALS .X ± .05, .XX ± .01, .XXX ± .005; FRACTIONS ± 1/64, ANGLES ± 0° 30'

CODE: C

5401-282 (01-9519)

REQ. ITEM	PART NO.	DESCRIPTION	SYMBOL
#	#	THE TECHNICAL MATERIEL CORP. MAMARONECK. NEW YORK	
#	#	LENS, INDICATOR	
#	#	MATERIAL	
#	#	TYPE & TEMPER	
#	#	HEAT TREAT. SPEC.	
#	#	FINISH & SPEC. NO.	

DRAWN: H. AUSTIN 7-25-66
CHECKED: Jc 11/29/66
FINAL APPROVAL: M. May

ELEC. DES. APP. MECH. DES. APP. LI 114