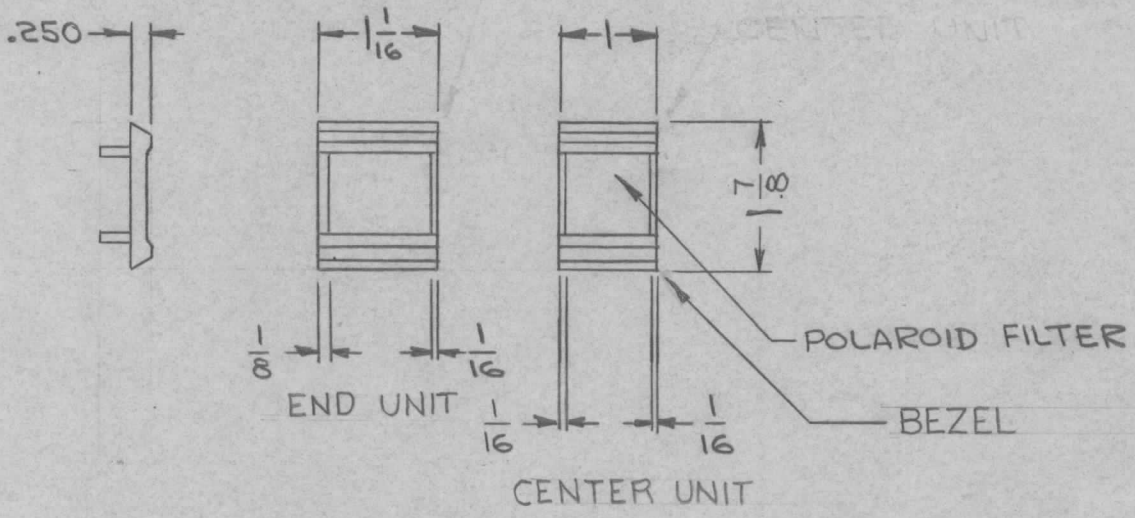


STANDARD DRAWING

REQ. PER UNIT	USED ON		LI108	Ø
	MODEL	ASS'Y. NO.		
	RTIU-1		9-8-64	

TMC PART No.	MFG PART No.	STYLE	POLAROID FILTER
LI108-1	951011	END	TRANSPARENT RED
LI108-2	951012	CENTER	TRANSPARENT RED

MATERIAL -
 BEZEL: GLASS FILLED NYLON
 FINISH - BLACK
 FILTER: POLAROID
 COLOR: RED



NOTE:
 BEZEL USED WITH IC101

						REQ. ITEM	PART NO.	EATON	DESCRIPTION	SYMBOL	
Ø	ORIGINAL RELEASE FOR PRODUCTION	9-11-64	Ø	PL			A	THE TECHNICAL MATERIEL CORP. MAMARONECK, NEW YORK			
X	EXPER. RELEASE	9-8-64	X	g			4	LENS, INDICATOR			
SYM	DESCRIPTION	DATE	CH. NO.	DRAFTS	CHECKER	ENG. APP.	MATERIAL				
UNLESS OTHERWISE SPECIFIED DIMENSIONS ARE IN INCHES AND INCLUDE CHEMICALLY APPLIED OR PLATED FINISHES		SCALE	4				4	4	G. Swann @ 9-11-64	RAC	
DECIMALS .X ± .05 .XX ± .01 .XXX ± .005		TOLERANCES	FRACTIONS ± 1/64 ANGLES ± 0° 30'	CODE C	5401-318		TYPE & TEMPER	HEAT TREAT. SPEC.	DRAWN	CHECKED	FINAL APPROVAL
							4	EE 9/4	9/14/64	LI108	Ø
							FINISH & SPEC. NO.	ELEC. DES. APP.	MÉCH. DES. APP.		