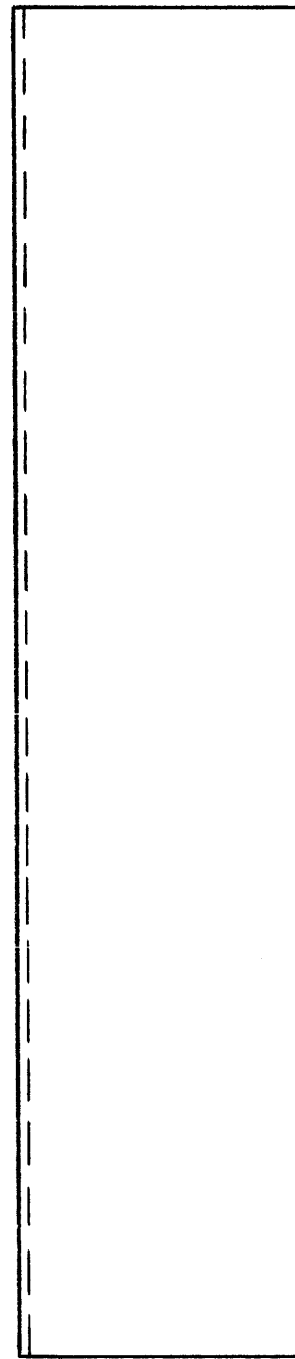
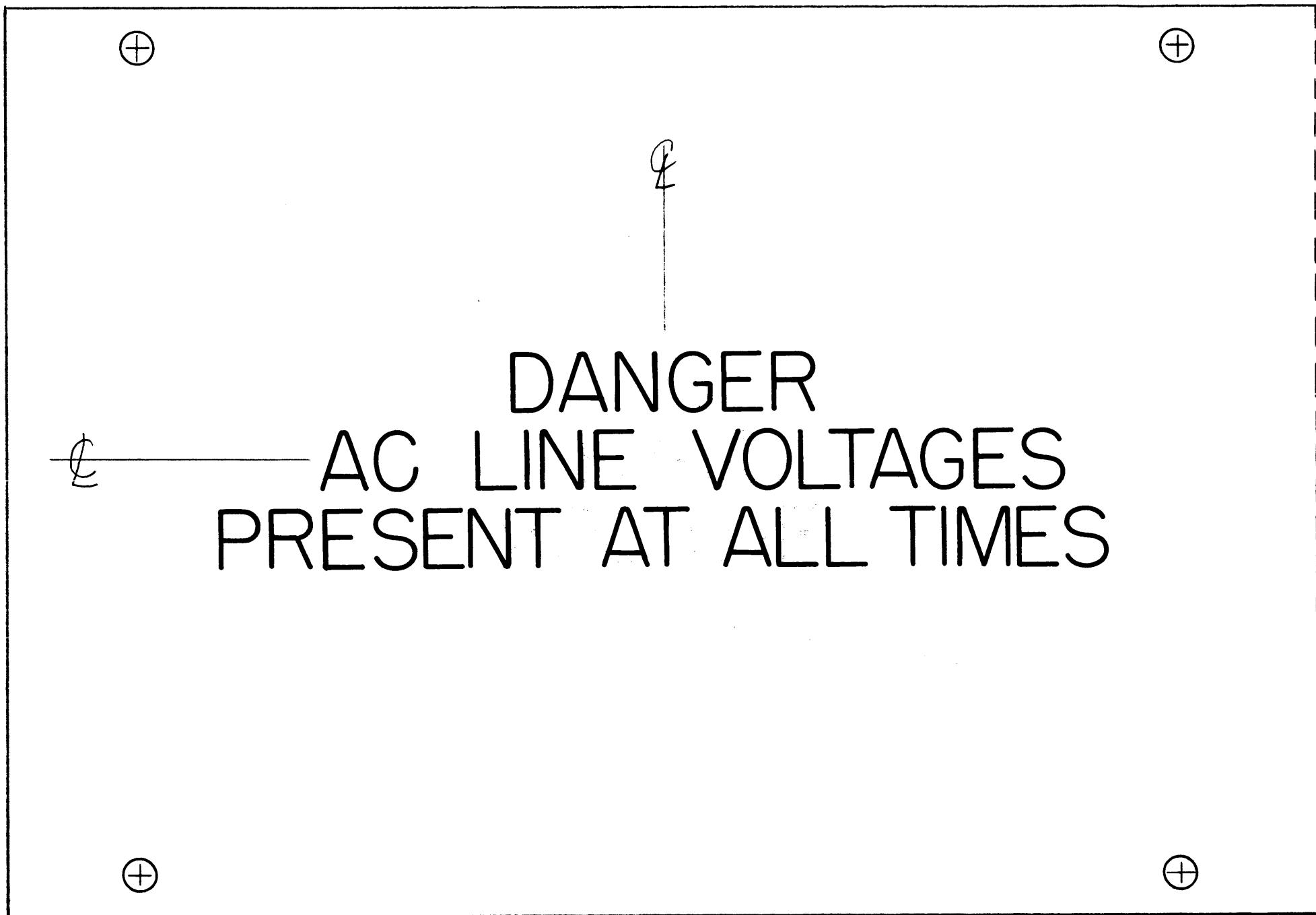


LD-905



ALL LETTERING TO BE 1" HIGH RED GOTHIC.

MARKING PROCESS: AS PER TMC SPECIFICATION 8-727

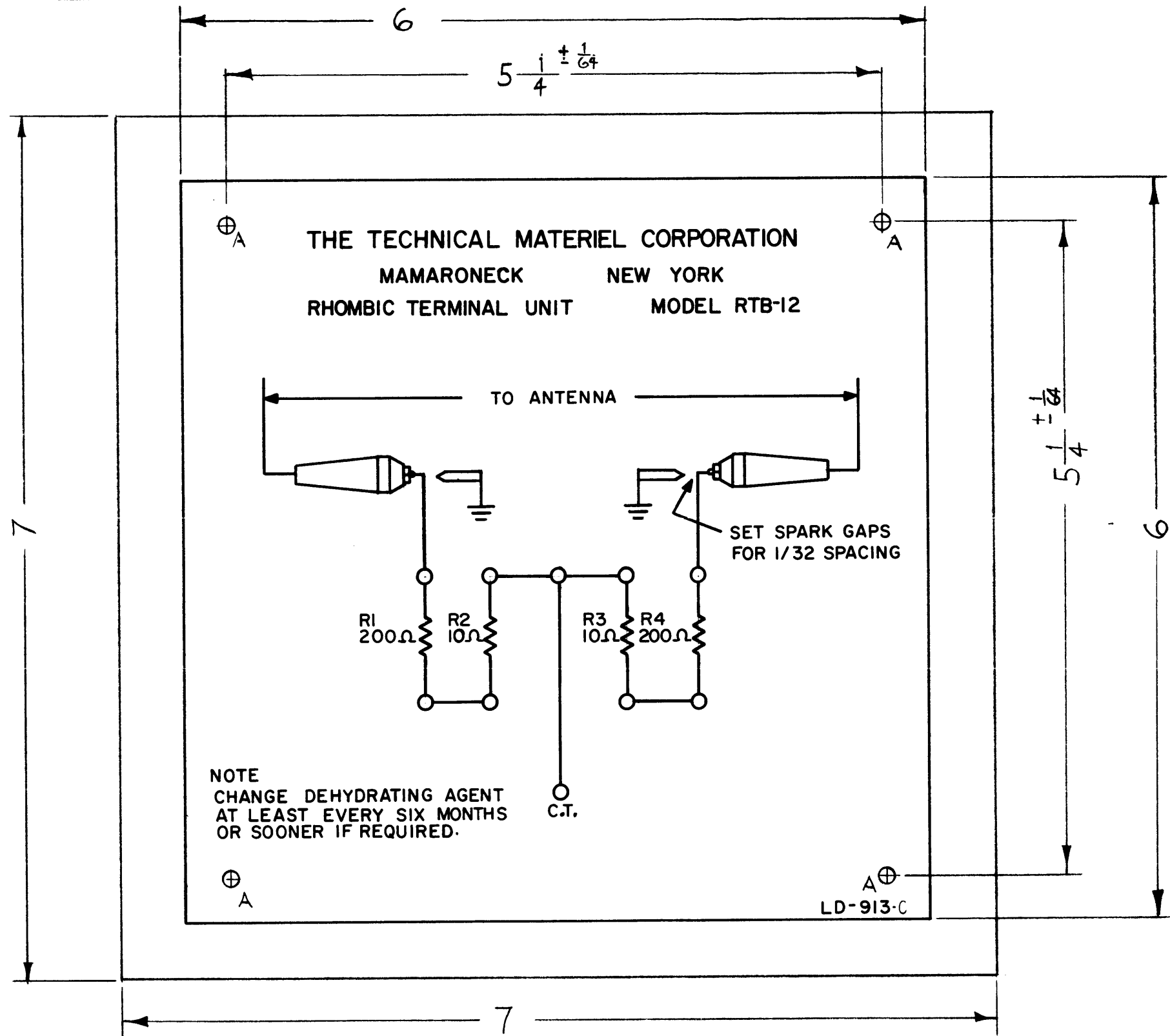
REF: MS-1842 (2)

ISSUE	ITEM	CHANGED FROM	DATE	CH. NO.	DRAFTS	CHECKER	ENG. APP.
TOLERANCES			SCALE: $\frac{1}{2}$				
DEC. DIM. \pm			MAXIMUM ALLOWABLE TOLERANCES HAVE BEEN DETERMINED AND ANY DEVIATIONS WILL BE CAUSE FOR REJECTION. REMOVE ALL BURRS AND SHARP EDGES				
FRAC. DIM. \pm							
ANGULAR DIM. \pm							

1	GPT-10K			4-19-61
REQ. PER UNIT	MODEL	PROJECT NO.	ASS'Y. NO.	DATE
USED ON				

REQ. ITEM	PART NO.	DESCRIPTION	SYMBOL
		THE TECHNICAL MATERIEL CORP. MAMARONECK. NEW YORK	
STOCK SIZE		LETTERING, COVER, LINE FILTER BOARD	
MATERIAL			
		W.A.F. <i>File</i>	<i>DB</i>
TYPE & TEMPER	HEAT TREAT. SPEC.	DRAWN	CHECKED
		<i>LK</i>	
FINISH & SPEC. NO.		ELEC. DES. APP.	MECH. DES. APP.
			LD-905

LD-913 C



A ~ 1/8 DIA. 4 REQ.

NOTE
CHANGE DEHYDRATING AGENT
AT LEAST EVERY SIX MONTHS
OR SOONER IF REQUIRED.

NOTE:
1 - PRINTED DIRECTLY ON FACE OF
PLASTIC
2 - MATERIAL: POLISHED WHITE OPAQUE
VINYL PLASTIC.

NOTICE TO PERSONS RECEIVING THIS DRAWING
THE TECHNICAL MATERIEL CORPORATION claims
proprietary right in the material disclosed hereon.
This drawing is issued in confidence for engineering
information only and may not be reproduced or used
to manufacture anything shown hereon without per-
mission from THE TECHNICAL MATERIEL CORPORA-
TION to the user. This drawing is loaned for mutual
assistance and is subject to recall at any time.

Property of:
THE TECHNICAL MATERIEL CORPORATION
MAMARONECK, NEW YORK

ISSUE	ITEM	CHANGED FROM	DATE	CH. NO.	DRAFTS	CHECKER	ENG. APP.
C	2	FINISH DELETED	2-1-63	8168	WF	WF	WF
	1	MATERIAL CLARIFIED					
B	2	FINISH & NOTE ADDED	7-18-62	6925	WF	WF	WF
	1	MATL WAS VINYL PLASTIC					
A	1	SYM. NOS. ADDED	5/8/61	*	WF	WF	WF

TOLERANCES: DEC. DIM. ±, FRAC. DIM. ± 1/64, ANGULAR DIM. ±

SCALE: DO NOT SCALE

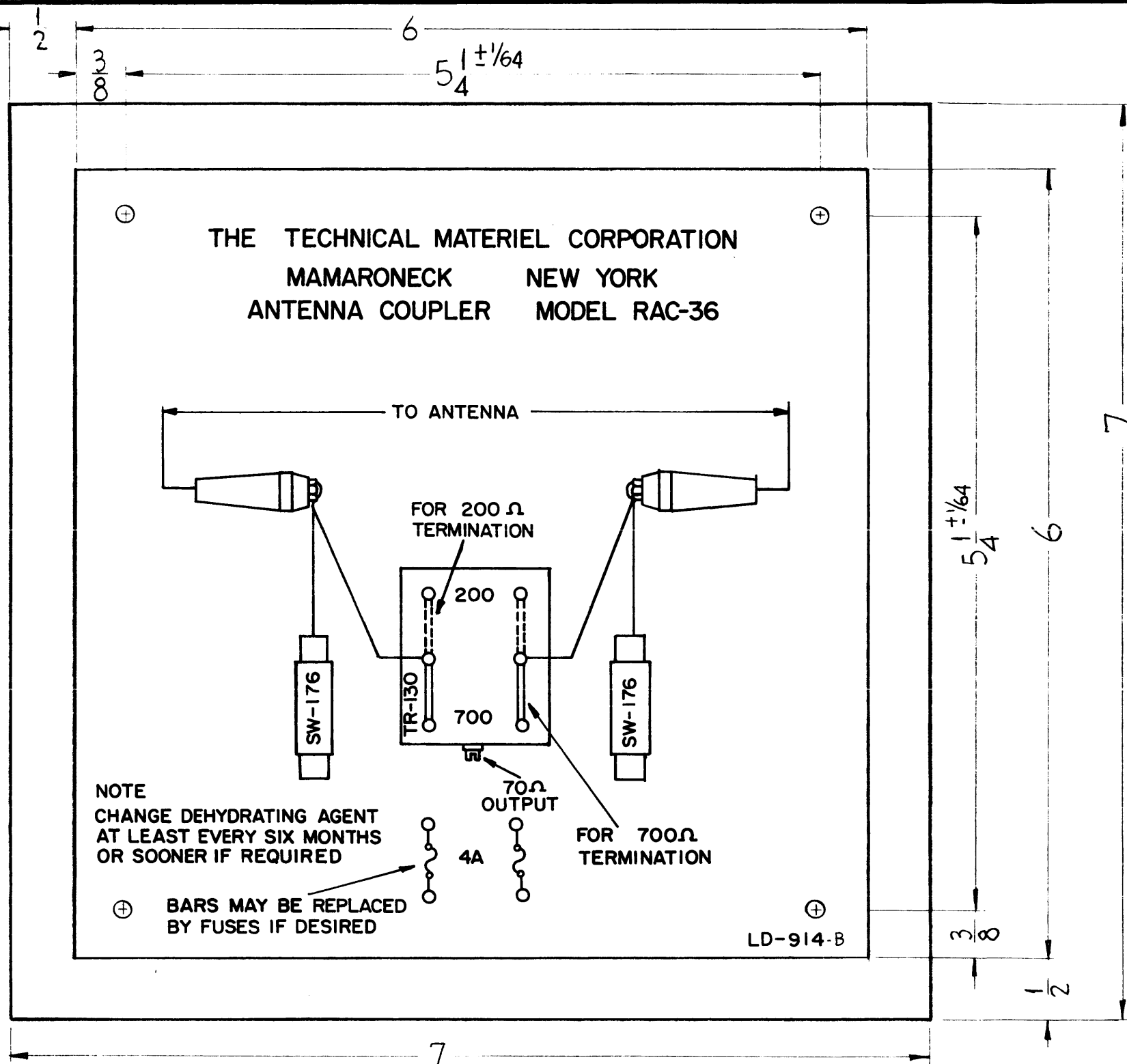
MAXIMUM ALLOWABLE TOLERANCES HAVE BEEN DETERMINED AND ANY DEVIATIONS WILL BE CAUSE FOR REJECTION. REMOVE ALL BURRS AND SHARP EDGES

REQ. PER UNIT	RTB-12	PROJECT NO.	ASS'Y. NO.	DATE
	MODEL			5-1-61

USED ON

REQ. ITEM	PART NO.	DESCRIPTION	SYMBOL
	.015	THE TECHNICAL MATERIEL CORP. MAMARONECK, NEW YORK	
	STOCK SIZE		
	SEE NOTE # 2	SCHEMATIC DIAGRAM	
	MATERIAL	RTB-12	
	TYPE & TEMPER	HEAT TREAT. SPEC.	
		DRAWN	CHECKED
		FINAL APPROVAL	
	FINISH & SPEC. NO.	ELEC. DES. APP.	MECH. DES. APP.

LD-914 C



SUPERSEDED

REPLACED BY LD-244

NOTE
4 HOLES REQ.
7/64 (.109) DIA.

NOTE:
1- PRINTED DIRECTLY ON FACE OF PLASTIC.
2- MATERIAL: POLISHED WHITE OPAQUE
VINYL PLASTIC

NOTICE TO PERSONS RECEIVING THIS DRAWING

THE TECHNICAL MATERIEL CORPORATION claims proprietary right in the material disclosed hereon. This drawing is issued in confidence for engineering information only and may not be reproduced or used to manufacture anything shown hereon without permission from THE TECHNICAL MATERIEL CORPORATION to the user. This drawing is loaned for mutual assistance and is subject to recall at any time.

Property of:
THE TECHNICAL MATERIEL CORPORATION
MAMARONECK, NEW YORK

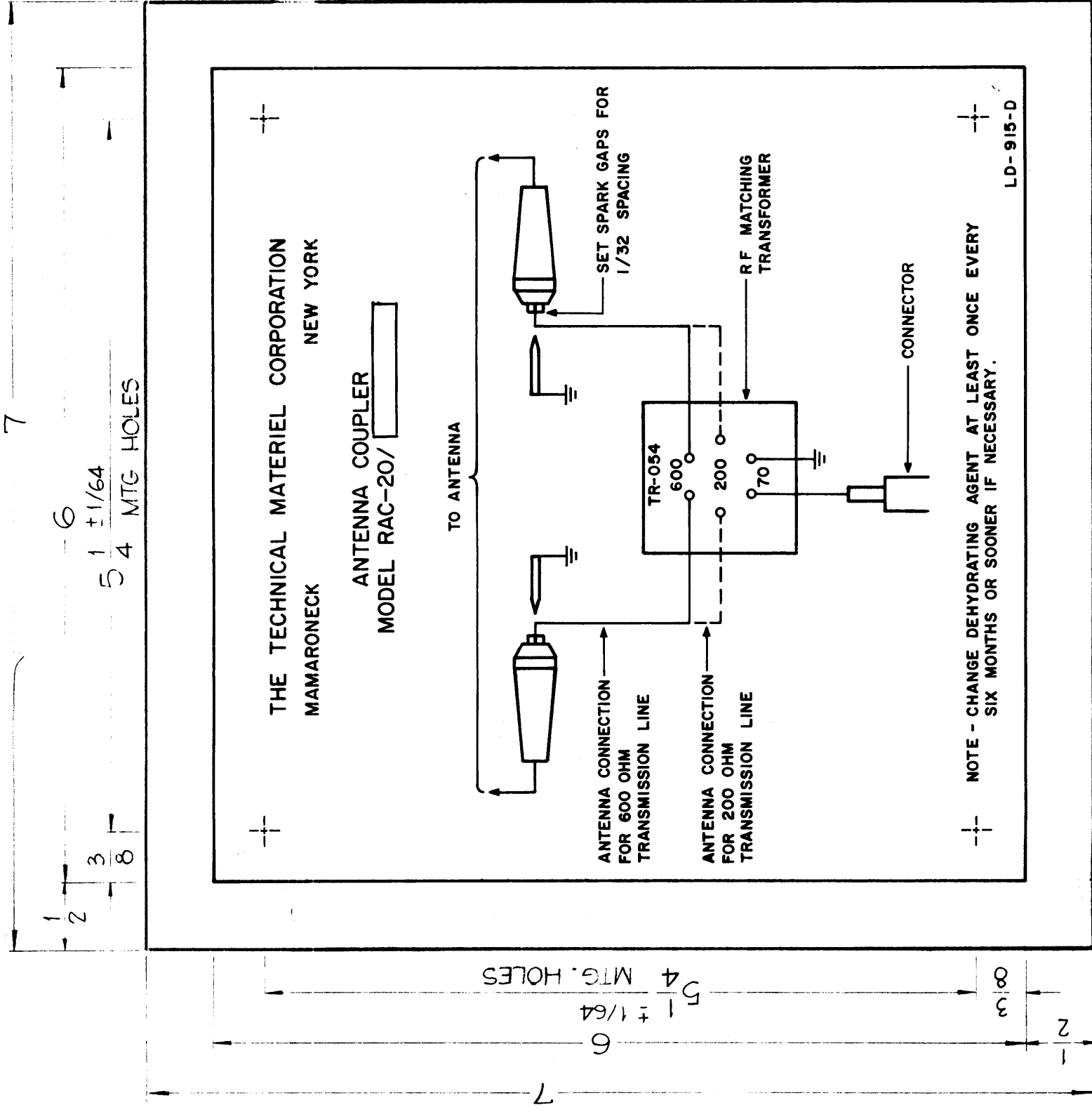
C	"SUPERSEDED" NOTE ADDED	6.9.64	11509	WB		
B	FINISH DELETED MATERIAL CLARIFIED	2-1-63	8168			
A	FINISH & NOTE ADDED MATE WAS VINYL PLASTIC	7-18-62	6925			
SYM	DESCRIPTION	DATE	CH. NO.	DRAFTS	CHECKER	ENG. APP.
UNLESS OTHERWISE SPECIFIED:		SCALE: <i>A</i>				
DIMENSIONS ARE IN INCHES		MAXIMUM ALLOWABLE TOLERANCES HAVE BEEN DETERMINED AND ANY DEVIATIONS WILL BE CAUSE FOR REJECTION.				
TOLERANCES ON FRACTIONS ± 1/64 DECIMALS ± .005 ANGLES ± 1/2°		REMOVE ALL BURRS AND SHARP EDGES				
REQ. PER UNIT	MODEL	SECTION	ASS'Y. NO.	DATE	USED ON	
	RAC-36			5-4-61		

REQ. ITEM	PART NO.	DESCRIPTION	SYMBOL
	.015	THE TECHNICAL MATERIEL CORP. MAMARONECK, NEW YORK	
	SEE NOTE #2	SCHMATIC DIAGRAM MODEL RAC-36	
TYPE & TEMPER	HEAT TREAT. SPEC.	DRAWN	CHECKER
		<i>D.J. Mann</i>	<i>H.W.</i>
			<i>P.H.</i>
			FINAL APPROVAL
			LD-914
			C
		ELEC. DES. APP.	MECH. DES. APP.

LD-915 D

HOLES
7/64 DIA.
4 Req

NOTE:
1~ PRINTED DIRECTLY ON FACE OF PLASTIC
2~ MATERIAL: POLISHED WHITE OPAQUE VINYL PLASTIC



THE TECHNICAL MATERIEL CORPORATION
MAMARONECK
NEW YORK

ANTENNA COUPLER
MODEL RAC-20/

NOTE - CHANGE DEHYDRATING AGENT AT LEAST ONCE EVERY SIX MONTHS OR SOONER IF NECESSARY.

LD-915-D

3/16 x 1 BLOCK, AREA TO BE UNPOLISHED.

NOTICE TO PERSONS RECEIVING THIS DRAWING

THE TECHNICAL MATERIEL CORPORATION claims proprietary right in the material disclosed hereon. This drawing is issued in confidence for engineering information only and may not be reproduced or used to manufacture anything shown herein without permission from THE TECHNICAL MATERIEL CORPORATION to the user. This drawing is loaned for mutual assistance and is subject to recall at any time.

Property of:

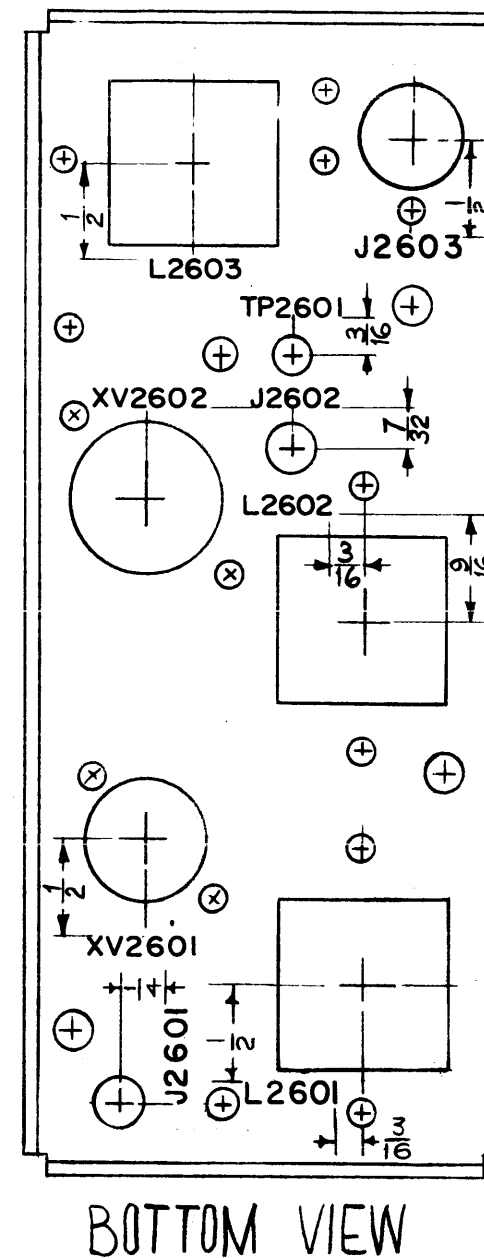
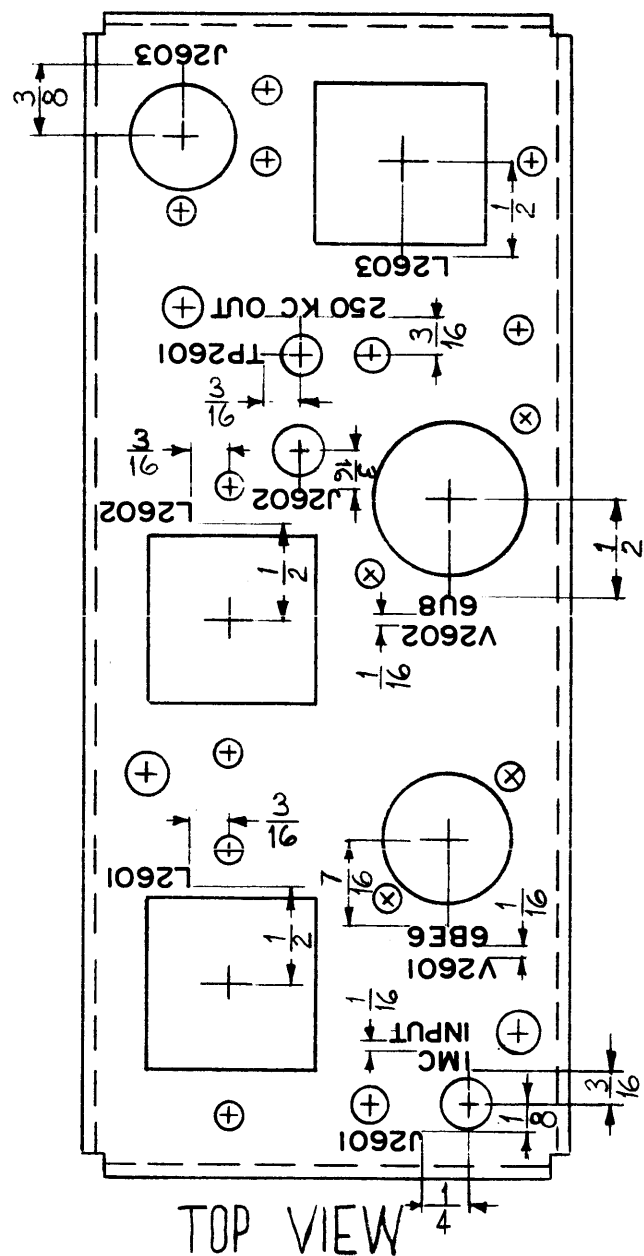
THE TECHNICAL MATERIEL CORPORATION
MAMARONECK, NEW YORK

SYMBOL	DESCRIPTION	REQUIREMENT	DATE	CH. NO.	DRAFTS	CHECKER	ENG. APP.
D	UNPOLISHED AREA WAS 3/16 X 1/2 MODEL WAS RAC-20/AX-D		7-31-64	11821	WJB		
C	FINISH DELETED		2-1-63	8168			
B	MATERIAL CLARIFIED		7-25-62	7232			
A	BLOCK & NOTE ADDED MODEL RELOCATED		7-18-62	6975			
	FINISH & NOTE ADDED						
	MATEL WAS VINYL PLASTIC						
	DESCRIPTION						

UNLESS OTHERWISE SPECIFIED:
DIMENSIONS ARE IN INCHES
TOLERANCES ON FRACTIONS ± 1/64 DECIMALS ± .005 ANGLES ± 1/2°
SCALE: DO NOT SCALE
MAXIMUM ALLOWABLE TOLERANCES HAVE BEEN DETERMINED AND ANY DEVIATIONS WILL BE CAUSE FOR REJECTION.
REMOVE ALL BURRS AND SHARP EDGES

REQ. ITEM	PART NO.	DESCRIPTION	SYMBOL
	.015	THE TECHNICAL MATERIEL CORP. MAMARONECK, NEW YORK	
	STOCK SIZE		
	SEE NOTE #2	SCHEMATIC, DIAGRAM	
	MATERIAL	MODEL RAC-20	
	TYPE & TEMPER	John C Biela	
	HEAT TREAT. SPEC.	John C Biela	
	DATE	CHECKER	FINAL APPROVAL
	5-5-61		
	SECTION		
	MODEL		
	ASBY. NO.		
	USED ON		
REQ. PER UNIT		ELEC. DES. APP. MECH. DES. APP.	LD-915 D

LD-921 A



NOTICE TO PERSONS RECEIVING THIS DRAWING

THE TECHNICAL MATERIEL CORPORATION claims proprietary right in the material disclosed hereon. This drawing is issued in confidence for engineering information only and may not be reproduced or used to manufacture anything shown hereon without permission from THE TECHNICAL MATERIEL CORPORATION to the user. This drawing is loaned for mutual assistance and is subject to recall at any time.

Property of:
THE TECHNICAL MATERIEL CORPORATION
MAMARONECK, NEW YORK

ALL LETTERING TO BE 1/8 HIGH BLACK GOTHIC.

MARKING PROCESS: AS PER T M C SPECIFICATION S-727.

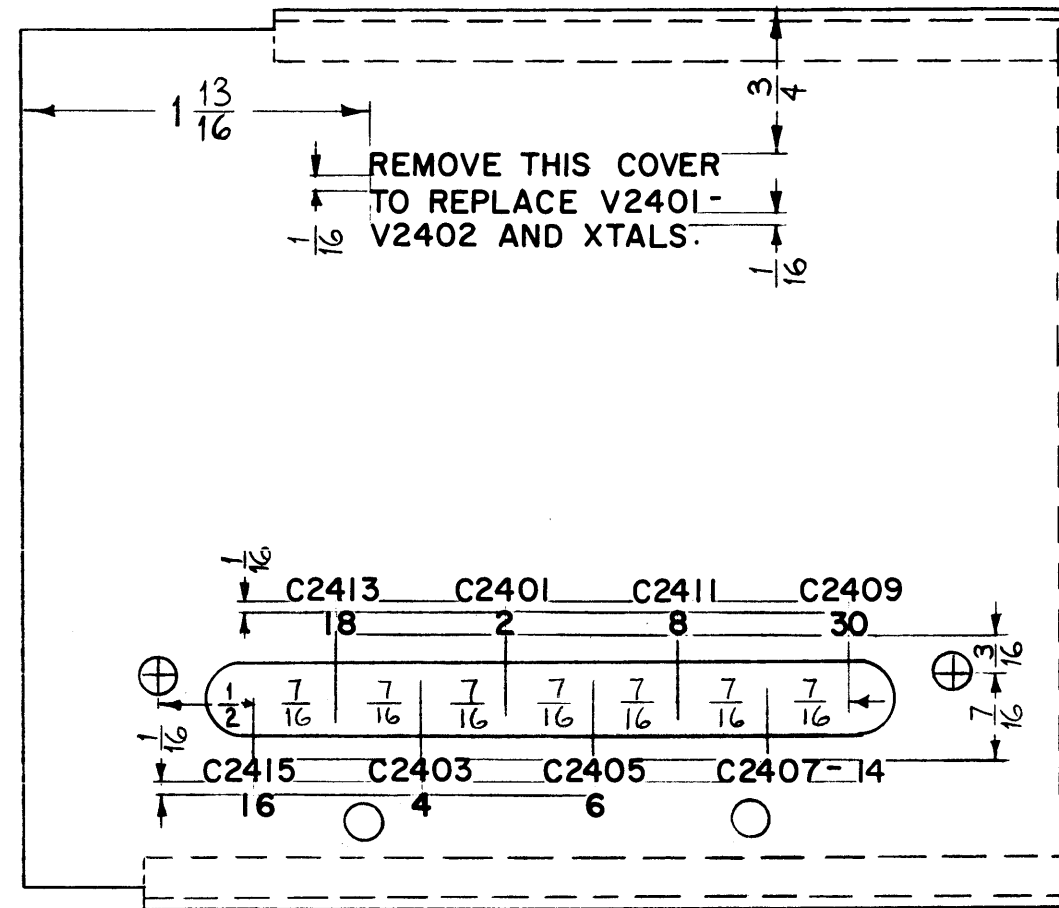
MS-2579 (2)

SYM	DESCRIPTION	DATE	CH. NO.	DRAFTS	CHECKER	ENG. APP.
A	J2603, J2601, L2601 RELOCATED (BOT. VIEW)	8/18/61	5452	1	R. Uzzo	[Signature]
UNLESS OTHERWISE SPECIFIED:		SCALE:				
DIMENSIONS ARE IN INCHES		MAXIMUM ALLOWABLE TOLERANCES HAVE BEEN DETERMINED AND ANY DEVIATIONS WILL BE CAUSE FOR REJECTION.				
TOLERANCES ON FRACTIONS ± 1/64 DECIMALS ± .005 ANGLES ± 1/2°		REMOVE ALL BURRS AND SHARP EDGES				

REQ. PER UNIT	MODEL	SECTION	ASS'Y. NO.	DATE
1	CHG-2			5-23-61
USED ON				

REQ. ITEM	PART NO.	DESCRIPTION	SYMBOL
STOCK SIZE		THE TECHNICAL MATERIEL CORP. MAMARONECK, NEW YORK	
MATERIAL		LETTERING, CHASSIS DIVIDER	
TYPE & TEMPER	HEAT TREAT. SPEC.	DRAWN	CHECKER
		R. Uzzo	[Signature]
FINISH & SPEC. NO.		ELEC. DES. APP.	MECH. DES. APP.
		[Signature]	[Signature]
			LD-921 A

LD-928



MARKING PROCESS: AS PER TMC SPECIFICATION S-727

ALL LETTERING TO BE 1/8 HIGH BLACK GOTHIC.

NOTICE TO PERSONS RECEIVING THIS DRAWING

THE TECHNICAL MATERIEL CORPORATION claims proprietary right in the material disclosed hereon. This drawing is issued in confidence for engineering information only and may not be reproduced or used to manufacture anything shown hereon without permission from THE TECHNICAL MATERIEL CORPORATION to the user. This drawing is loaned for mutual assistance and is subject to recall at any time.

Property of:
THE TECHNICAL MATERIEL CORPORATION
MAMARONECK, NEW YORK

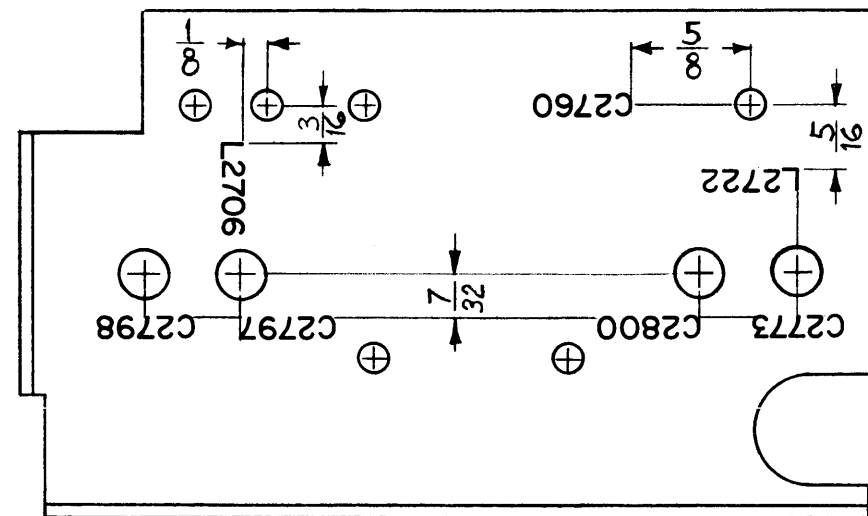
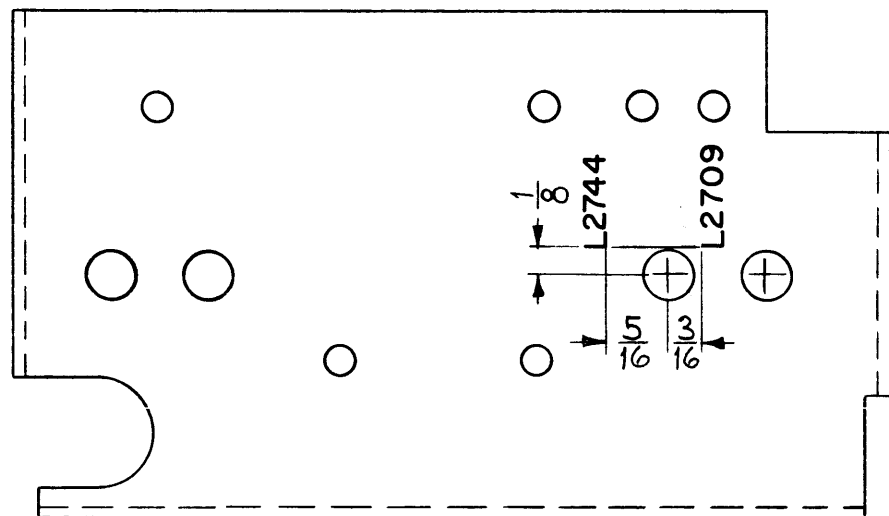
REF: MS-2590 (4)

SYM	DESCRIPTION	DATE	CH. NO.	DRAFTS	CHECKER	ENG. APP.
UNLESS OTHERWISE SPECIFIED:		SCALE: FULL (DO NOT SCALE)				
DIMENSIONS ARE IN INCHES		MAXIMUM ALLOWABLE TOLERANCES HAVE BEEN DETERMINED AND ANY DEVIATIONS WILL BE CAUSE FOR REJECTION.				
TOLERANCES ON FRACTIONS ± 1/64 DECIMALS ± .05 ANGLES ± 1/2°		REMOVE ALL BURRS AND SHARP EDGES				

REQ. PER UNIT	MODEL	SECTION	ASS'Y. NO.	DATE
1	CHG-2	OVEN		5-25-61
USED ON				

REQ.	ITEM	PART NO.	DESCRIPTION	SYMBOL
			THE TECHNICAL MATERIEL CORP. MAMARONECK, NEW YORK	
STOCK SIZE			LETTERING, REAR COVER, OUTER SHELL	
MATERIAL				
TYPE & TEMPER		HEAT TREAT. SPEC.	DRAWN	CHECKER
			<i>M.D.F.</i>	<i>J.W.D.</i>
FINISH & SPEC. NO.		ELEC. DES. APP.	MECH. DES. APP.	LD-928

LD-931



ALL LETTERING TO BE 1/8 HIGH BLACK GOTHIC.

ENGINEERING DEPARTMENT TECHNICAL DRAWING DIVISION

NOTICE TO PERSONS RECEIVING THIS DRAWING

THE TECHNICAL MATERIEL CORPORATION claims proprietary right in the material disclosed hereon. This drawing is issued in confidence for engineering information only and may not be reproduced or used to manufacture anything shown hereon without permission from THE TECHNICAL MATERIEL CORPORATION to the user. This drawing is loaned for mutual assistance and is subject to recall at any time.

Property of:

THE TECHNICAL MATERIEL CORPORATION
MAMARONECK, NEW YORK

REF: MS-2594 (2)

SYM	DESCRIPTION	DATE	CH. NO.	DRAFTS	CHECKER	ENG. APP.

UNLESS OTHERWISE SPECIFIED:
DIMENSIONS ARE IN INCHES
TOLERANCES ON FRACTIONS ± 1/64 DECIMALS ± .005 ANGLES ± 1/2°

SCALE: FULL (DO NOT SCALE)
MAXIMUM ALLOWABLE TOLERANCES HAVE BEEN DETERMINED AND ANY DEVIATIONS WILL BE CAUSE FOR REJECTION.
REMOVE ALL BURRS AND SHARP EDGES

1	CHG-2	MF/RF		5-24-61
REQ. PER UNIT	MODEL	SECTION	ASS'Y. NO.	DATE
	USED ON			

REQ. ITEM	PART NO.	DESCRIPTION	SYMBOL
		THE TECHNICAL MATERIEL CORP. MAMARONECK, NEW YORK	
	STOCK SIZE	LETTERING, SHIELD, CONNECTOR	
	MATERIAL		
	TYPE & TEMPER	HEAT TREAT. SPEC.	
		DRAWN	CHECKER
		ELEC. DES. APP.	MECH. DES. APP.
	FINISH & SPEC. NO.		LD-931

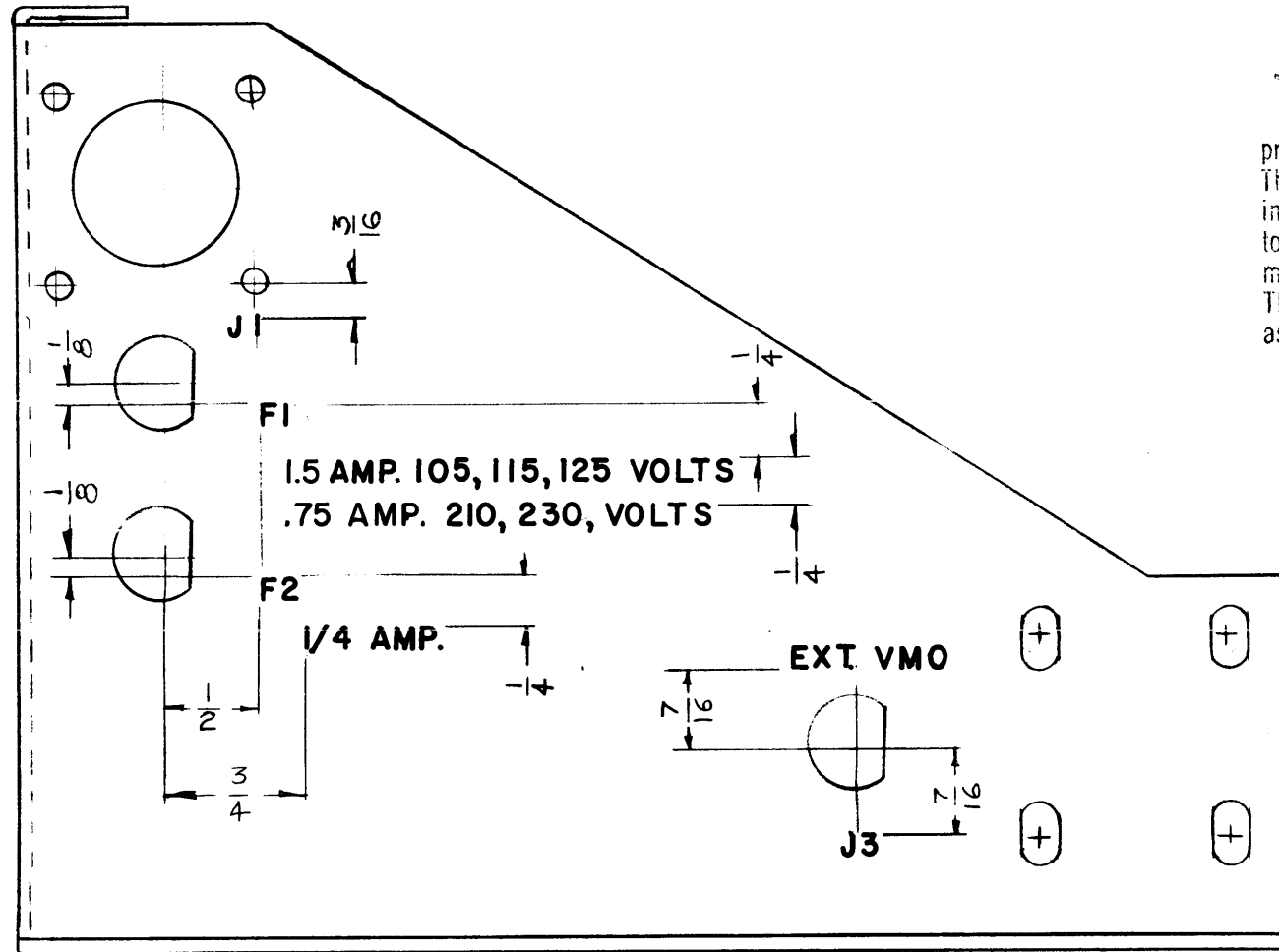
LD-954 B

LETTERING TO BE 1/8" HIGH BLACK GOTHIC

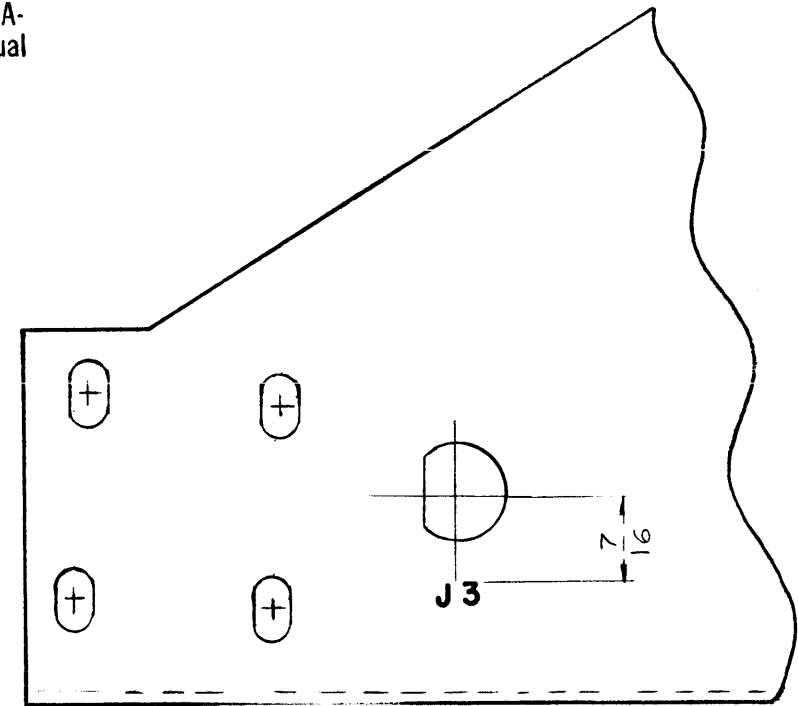
NOTICE TO PERSONS RECEIVING THIS DRAWING

THE TECHNICAL MATERIEL CORPORATION claims proprietary right in the material disclosed hereon. This drawing is issued in confidence for engineering information only and may not be reproduced or used to manufacture anything shown hereon without permission from THE TECHNICAL MATERIEL CORPORATION to the user. This drawing is loaned for mutual assistance and is subject to recall at any time.

Property of:
THE TECHNICAL MATERIEL CORPORATION
MAMARONECK, NEW YORK



OUTSIDE VIEW



INSIDE VIEW

REF - MS - 2615

SYM	DESCRIPTION	DATE	CH. NO.	DRAFTS	CHECKER	ENG. APP.
B	CHG. HOLES TO CONFORM TO MS	2-4-64	10801	A.M	T.R.	<i>[Signature]</i>
A	1.5AMP WAS 1; .75AMP WAS 1/2	4-18-62	6634	FE	<i>[Signature]</i>	<i>[Signature]</i>

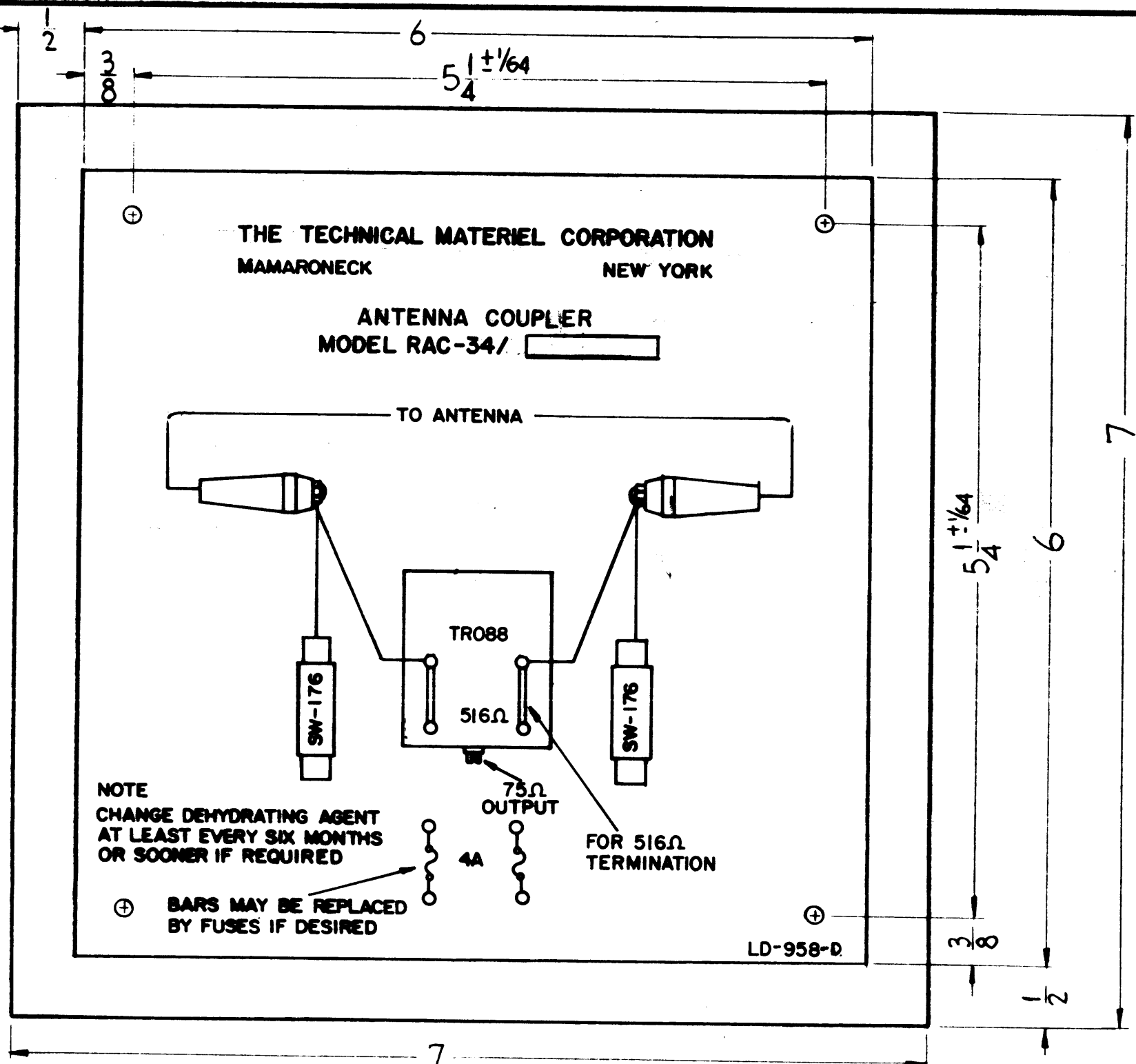
UNLESS OTHERWISE SPECIFIED:
DIMENSIONS ARE IN INCHES
TOLERANCES ON
FRACTIONS ± 1/64 DECIMALS ± .005 ANGLES ± 1/2°

SCALE:
MAXIMUM ALLOWABLE TOLERANCES HAVE BEEN DETERMINED AND ANY DEVIATIONS WILL BE CAUSE FOR REJECTION.
REMOVE ALL BURRS AND SHARP EDGES

REQ. PER UNIT	MODEL	SECTION	ASS'Y. NO.	DATE
1	GPE-1			9-12-61
USED ON				

REQ. ITEM	PART NO.	DESCRIPTION	SYMBOL
		THE TECHNICAL MATERIEL CORP. MAMARONECK, NEW YORK	
STOCK SIZE		LETTERING, FRONT & BACK	
MATERIAL			
		R LOPEZ 11-12-61	<i>[Signature]</i>
TYPE & TEMPER	HEAT TREAT. SPEC.	DRAWN	CHECKER
		<i>[Signature]</i>	<i>[Signature]</i>
FINISH & SPEC. NO.	ELEC. DES. APP.	MECH. DES. APP.	
			LD-954 B

LD-958 D



NOTE
CHANGE DEHYDRATING AGENT
AT LEAST EVERY SIX MONTHS
OR SOONER IF REQUIRED

⊕ BARS MAY BE REPLACED
BY FUSES IF DESIRED

NOTE
4 HOLES REQ.
7/64 (.109) DIA.

NOTE:

1. PRINTED DIRECTLY ON FACE OF PLASTIC
2. MATERIAL: POLISHED WHITE OPAQUE VINYL PLASTIC .015 THK.
3. 3/16 X 1 BLOCK, AREA TO BE UNPOLISHED.

NOTICE TO PERSONS RECEIVING THIS DRAWING

THE TECHNICAL MATERIEL CORPORATION claims proprietary right in the material disclosed hereon. This drawing is issued in confidence for engineering information only and may not be reproduced or used to manufacture anything shown hereon without permission from THE TECHNICAL MATERIEL CORPORATION to the user. This drawing is loaned for mutual assistance and is subject to recall at any time.

Property of:
THE TECHNICAL MATERIEL CORPORATION
MAMARONECK, NEW YORK

SYM	DESCRIPTION	DATE	CH. NO.	DRAFTS	CHECKER	ENG. APP.
D	NOTES UPDATED. MODEL # WAS RAC-34/AX - □	7-31-64	11821	NB		
C	FINISH DELETED MATERIAL CLARIFIED	2-1-63	8168			
B	MODEL RELOCATED, BLOCK & N TE ADDED	9-26-62	7232			
A	FINISH & NOTE ADDED MATE WAS VINYL PLASTIC	7-18-62	6925			

UNLESS OTHERWISE SPECIFIED:
DIMENSIONS ARE IN INCHES
TOLERANCES ON FRACTIONS ± 1/64 DECIMALS ± .005 ANGLES ± 1/2°

SCALE: *1*

MAXIMUM ALLOWABLE TOLERANCES HAVE BEEN DETERMINED AND ANY DEVIATIONS WILL BE CAUSE FOR REJECTION.
REMOVE ALL BURRS AND SHARP EDGES

1	RAC-34			7-11-61
REQ. PER UNIT	MODEL	SECTION	ASS'Y. NO.	DATE
				USED ON

REQ. ITEM	PART NO.	DESCRIPTION	SYMBOL
	.015	THE TECHNICAL MATERIEL CORP. MAMARONECK, NEW YORK	
	STOCK SIZE		
	SEE NOTE #2	SCHMATIC DIAGRAM	
	MATERIAL	MODEL RAC-34	
		W.A.F. J.W. P.M.	
	TYPE & TEMPER	DRAWN	CHECKER
	HEAT TREAT. SPEC.		FINAL APPROVAL
			LD-958 D
	FINISH SPEC. NO.	ELEC. DES. APP.	MECH. DES. APP.

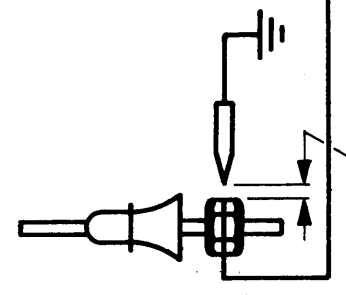
LD 9725

OBSOLETE
USE LD 2340 - A

5 3/4

THE TECHNICAL MATERIEL CORPORATION
MAMARONECK NEW YORK
VERTICAL RECEIVING ANTENNA MODEL VRA-5

ANTENNA



SET SPARK GAP FOR
1/32 SPACING.

NOTE:
CHANGE DEHYDRATING AGENT
EVERY SIX MONTHS OR SOONER
IF REQUIRED

CONNECT OUTER CASE
TO GOOD PHYSICAL
GROUND

LD972-C

NOTE:

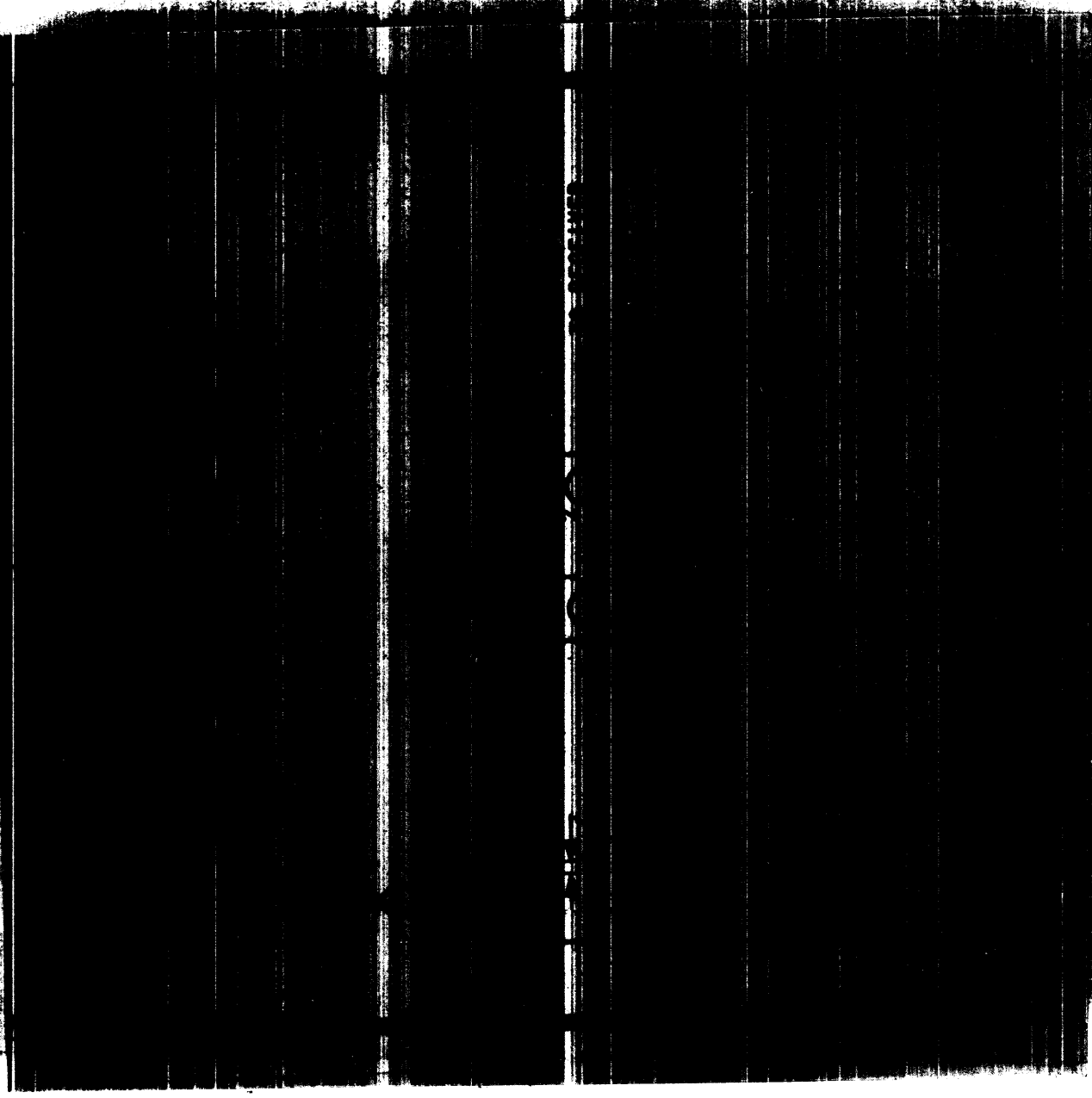
1. ALL LETTERING AND ARTWORK TO BE BLACK ON ALUMINUM BACKGROUND.
2. PRINT ON PHOTO-SENSITIVE BLACK METAL WITH ADHESIVE BACK.
3. REPRODUCTION METHOD: AS PER TMC SPEC S1222.

QTY / UNIT	MODEL USED ON	ASSY NO.
	VRA-5	
APPLICATION		
CODE		

NOTICE TO PERSONS RECEIVING THIS DRAWING
THE TECHNICAL MATERIEL CORPORATION claims proprietary right in the material disclosed hereon. This drawing is issued in confidence for engineering information only and may not be reproduced or used to manufacture anything shown hereon without permission from THE TECHNICAL MATERIEL CORPORATION to the user. This drawing is loaned for mutual assistance and is subject to recall at any time.

REVISIONS

ZONE	LTR	DESCRIPTION	DATE	E.M.N.NO	DRAFT	CHKD	APPD
	C	REDRAWN W/ REVISIONS	8/27/61	19578	KWU		EFM
	D	NOTE OBSOLETE ADD. 6-27-91			GDL		



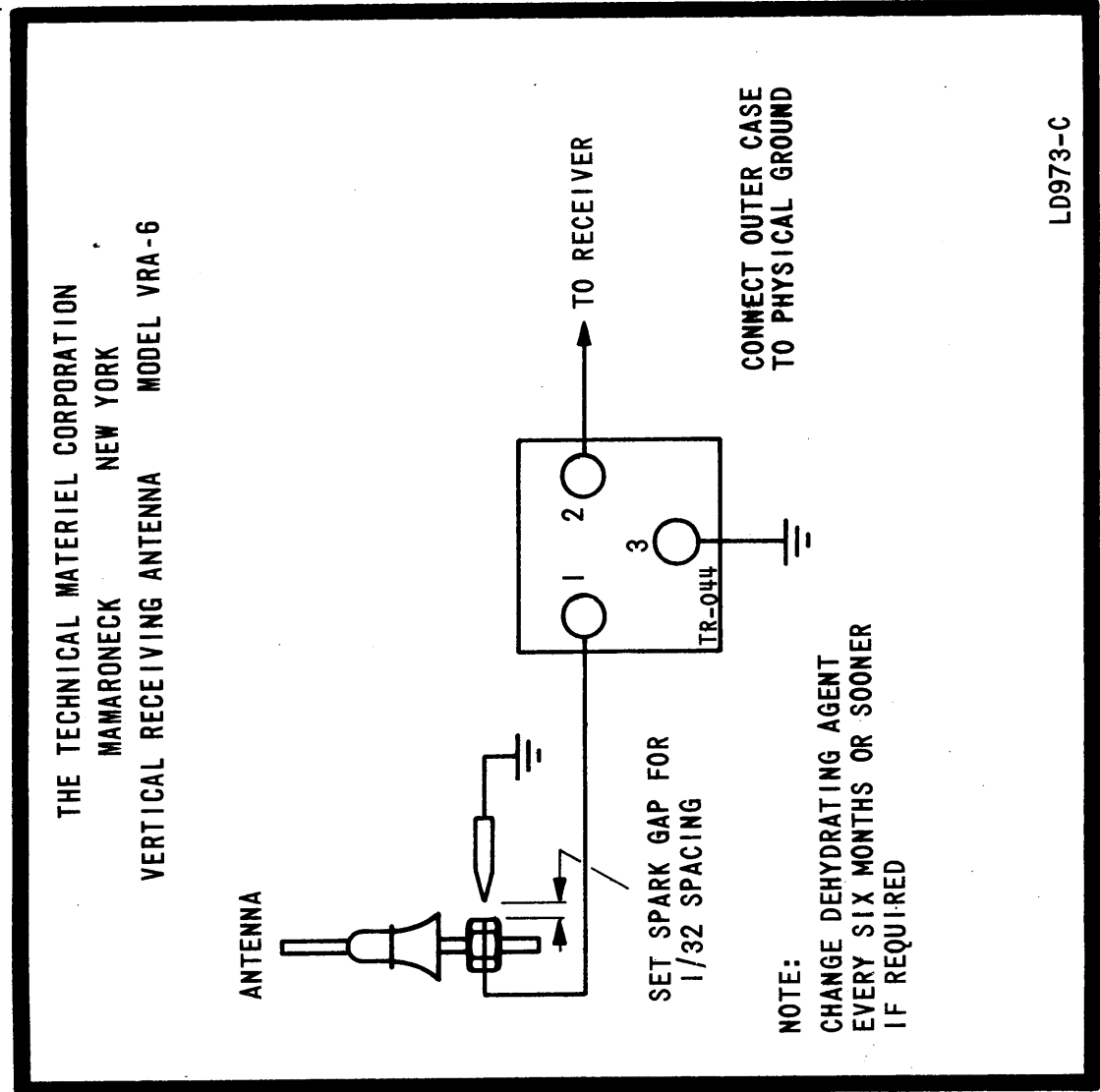
REQ'D ITEM	PART NUMBER	DESCRIPTION	SYM.
LIST OF MATERIAL			
THE TECHNICAL MATERIEL CORP.			
MAMARONECK, NEW YORK			
DIAGRAM, SCHEMATIC			

UNLESS OTHERWISE SPECIFIED DIMENSIONS ARE IN INCHES AND INCLUDE CHEMICALLY APPLIED OR PLATED FINISHES	FINAL APPROVAL ARF DATE 8/20/61 MECH. DES.	DATE 8/20/61	THE TECHNICAL MATERIEL CORP.
DECIMALS .X ± .05 .XX ± .01 .XXX ± .005	ELECT. DES. ARF DATE 8/20/61	DATE 8/20/61	MAMARONECK, NEW YORK
FRACTIONS 1/64	CHECKED AB	DATE 8/20/61	DIAGRAM, SCHEMATIC
ANGLES 0°-30'	DRAWN <i>[Signature]</i>	DATE 8/20/61	
MATERIAL			SIZE B
FINISH			CODE IDENT. NO. 82679
			DWG NO. LD 972
			ISSUE D
			SCALE FULL
			SHEET OF

LD 9735

"OBSOLETE"
USE LD 2340-A

5 3/4



- NOTE:
1. ALL LETTERING AND ARTWORK TO BE BLACK ON ALUMINUM BACKGROUND, WITH ADHESIVE BACKING.
 2. REPRODUCTION METHOD: AS PER TMC SPEC S1222.

QTY / UNIT	MODEL USED ON	ASSY NO.
	VRA-6	
APPLICATION		
CODE		
<p>NOTICE TO PERSONS RECEIVING THIS DRAWING</p> <p>THE TECHNICAL MATERIEL CORPORATION claims proprietary right in the material disclosed herein. This drawing is issued in confidence for engineering information only and may not be reproduced or used to manufacture anything shown herein without permission from THE TECHNICAL MATERIEL CORPORATION to the user. This drawing is loaned for mutual assistance and is subject to recall at any time.</p>		

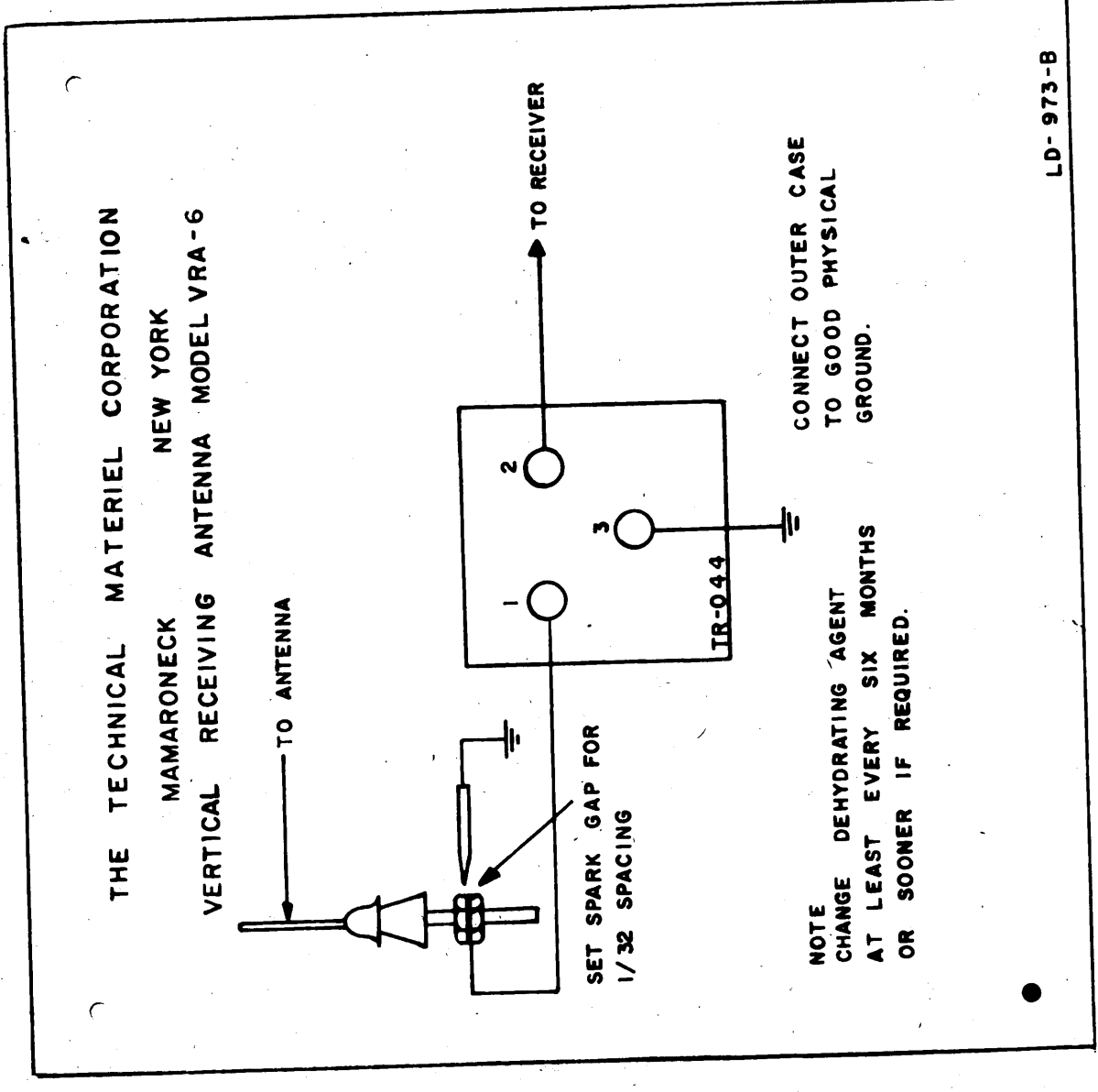
4

3

2

1

ZONE	LTR	DESCRIPTION	DATE	E.M.N. NO	DRAFT	CHKD	APPD
	C	REVISED & REDRAWN	2/26/61	1557B	KH	J	EFM
	D	NOTE "OBSOLETE" ADD	6-27-61				



FINAL APPROVAL	DATE	DESCRIPTION	SYM.
ARF	9-18-61		
MECH. DES.	DATE		
ARF	5/18/61		
AB	9-18-61		
DATE			
DATE			

UNLESS OTHERWISE SPECIFIED DIMENSIONS ARE IN INCHES AND INCLUDE CHEMICALLY APPLIED OR PLATED FINISHES		LIST OF MATERIAL	
DECIMALS	FRACTIONS	THE TECHNICAL MATERIEL CORP. MAMARONECK, NEW YORK	
.X ± .05	1/64	DIAGRAM, SCHEMATIC	
.XX ± .01	ANGLES	SIZE	CODE IDENT. NO. DWG NO.
.XXX ± .005	0°-30°	B	82679 LD 973
MATERIAL		SCALE	FULL SHEET OF
FINISH		ISSUE	
		D	

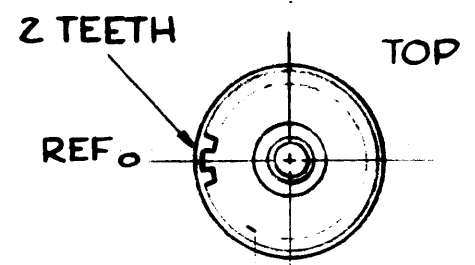
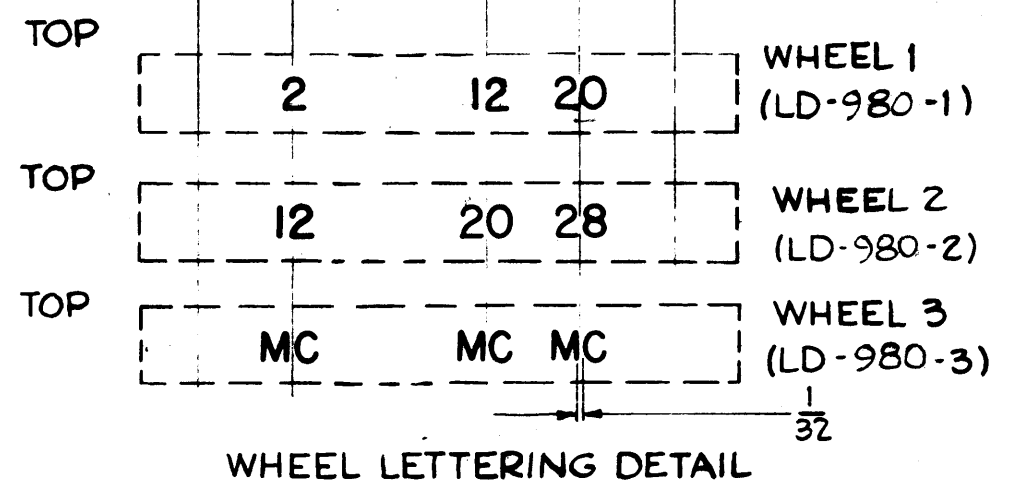
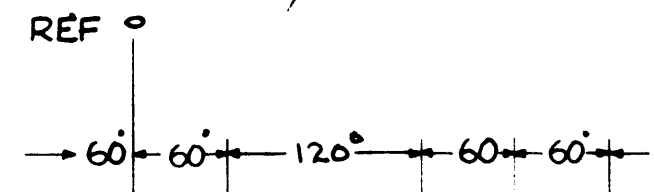
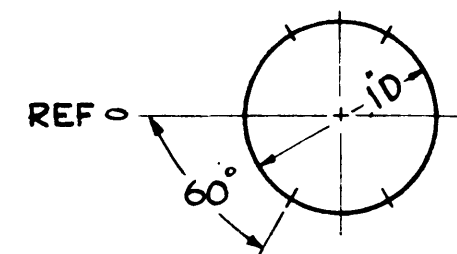
4

3

2

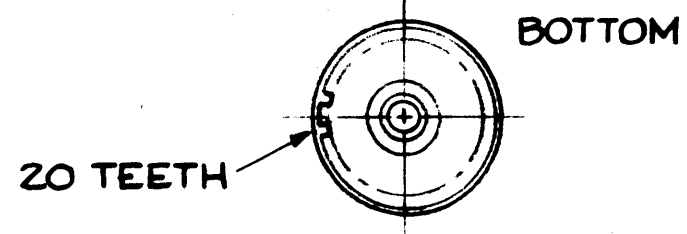
1

LD-980 C



LD-980-1
SHOWN FOR
REF ONLY

2



NOTES ~

- 1~ FIGURES ~ 18 POINT ALTERNATE BLACK GOTHIC NO. 2
- 2~ BACKGROUND ~ WHITE
- 3~ SPACING ~ DOUBLE FIGURES 1/32 APART, SINGLE FIGURES CENTERED.

NOTICE TO PERSONS RECEIVING THIS DRAWING

THE TECHNICAL MATERIEL CORPORATION claims proprietary right in the material disclosed hereon. This drawing is issued in confidence for engineering information only and may not be reproduced or used to manufacture anything shown hereon without permission from THE TECHNICAL MATERIEL CORPORATION to the user. This drawing is loaned for mutual assistance and is subject to recall at any time.

Property of:
THE TECHNICAL MATERIEL CORPORATION
MAMARONECK, NEW YORK

FOR TMC USE ~
USE BLANK WHEEL OF CY106 AFTER
DISASSEMBLING AS PER STEPS 1 & 2
OF TMC DWG A-3116-5

ISSUE	ITEM	CHANGED FROM	DATE	CH. NO.	DRAFTS	CHECKER	ENG. APP.
C	1	TMC DWG W/RS A-2222 (A) REMOVED OBSOLETE	3-7-67	17085	L.A.K.	[Signature]	[Signature]
B	1	REPLACED BY AC-139	5-5-63	8970	[Signature]	[Signature]	[Signature]
A		ON WHEEL #2 NO 12 WAS NO 2	5-10-62	6686	G.O.L.	[Signature]	[Signature]

TOLERANCE SCALE:

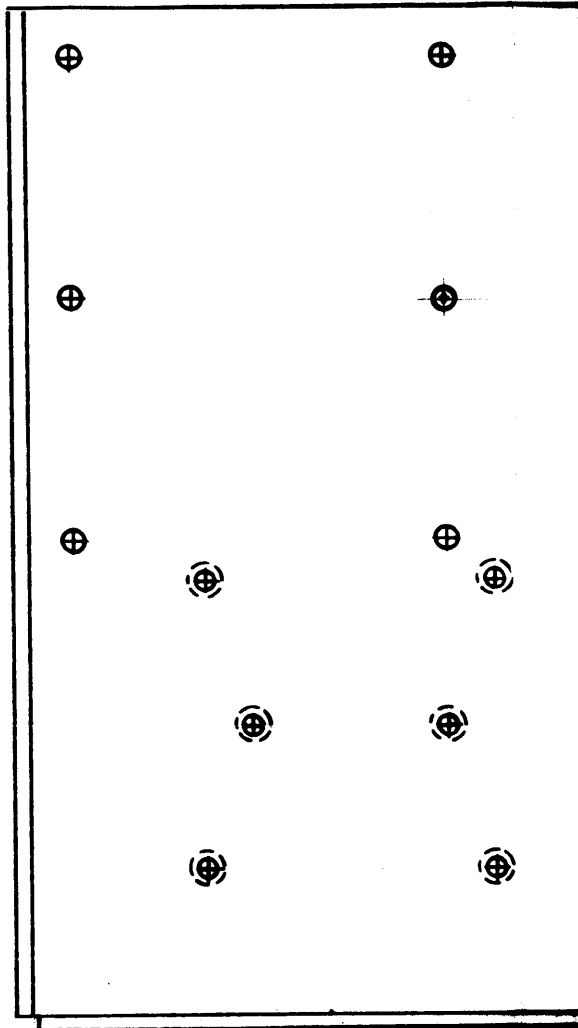
DEC. DIM. ±
FRAC. DIM. ±
ANGULAR DIM. ±

MAXIMUM ALLOWABLE TOLERANCES HAVE BEEN DETERMINED AND ANY DEVIATIONS WILL BE CAUSE FOR REJECTION. REMOVE ALL BURRS AND SHARP EDGES

1	APT-40K	AT-103	10-26-61
REQ. PER UNIT	MODEL	PROJECT NO.	ASS'Y. NO.
			DATE
			USED ON

REQ. ITEM	PART NO.	DESCRIPTION	SYMBOL
		THE TECHNICAL MATERIEL CORP. MAMARONECK, NEW YORK	
		STOCK SIZE	
		LETTERING, WHEELS, AC-139	
		MATERIAL	
		ASS'Y	
		DR. [Signature]	ENGR. [Signature]
		TYPE & TEMPER	HEAT TREAT. SPEC.
		FINISH & SPEC. NO.	ELC. DES. APP. MESH. DES. APP.
			LD-980 C

LD-981 A



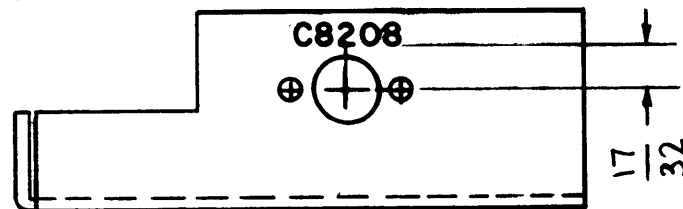
NOTICE TO PERSONS RECEIVING THIS DRAWING

THE TECHNICAL MATERIEL CORPORATION claims proprietary right in the material disclosed hereon. This drawing is issued in confidence for engineering information only and may not be reproduced or used to manufacture anything shown hereon without permission from THE TECHNICAL MATERIEL CORPORATION to the user. This drawing is loaned for mutual assistance and is subject to recall at any time.

Property of:
THE TECHNICAL MATERIEL CORPORATION
MAMARONECK, NEW YORK

MARKING PROCESS: AS PER T.M.C SPECIFICATION S-727

ALL LETTERING TO BE 1/8 HIGH BLACK GOTHIC.



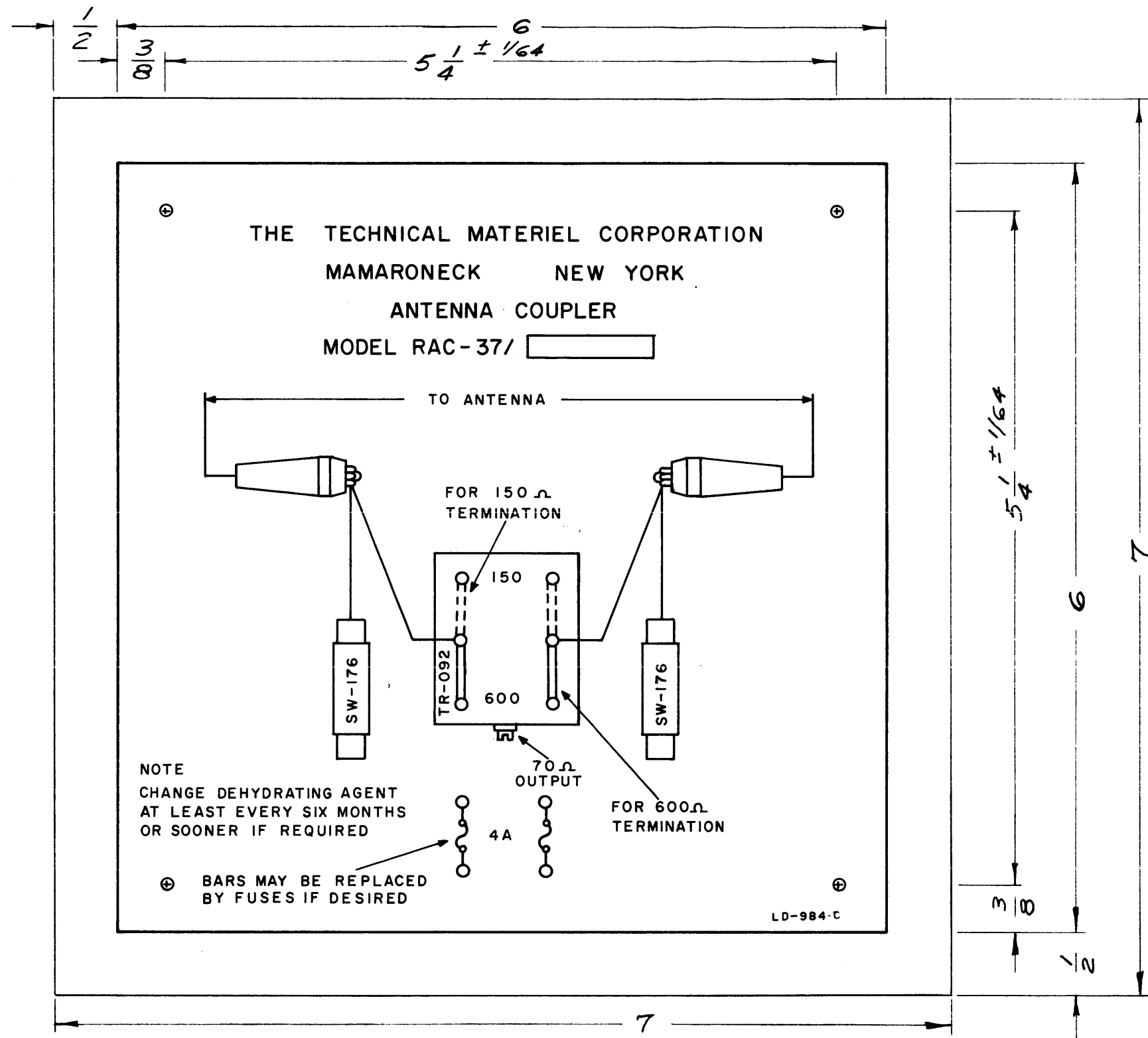
REF: MS-2677(2)

SYM	DESCRIPTION	DATE	CH. NO.	DRAFTS	CHECKER	ENG. APP.
A	C8208 WGS C8201	12-8-61	6013	SRG.	[Signature]	[Signature]
UNLESS OTHERWISE SPECIFIED:		SCALE: 2:1 (Do Not Scale)				
DIMENSIONS ARE IN INCHES		MAXIMUM ALLOWABLE TOLERANCES HAVE BEEN DETERMINED AND ANY DEVIATIONS WILL BE CAUSE FOR REJECTION.				
TOLERANCES ON FRACTIONS ± 1/64		REMOVE ALL BURRS AND SHARP EDGES				
DECIMALS ± .005		ANGLES ± 1/2				

REQ. PER UNIT	MODEL	SECTION	ASSY. NO.	DATE
1	GPT-40K	AT-103		10-26-61
USED ON				

REQ.	ITEM	PART NO.	DESCRIPTION	SYMBOL
			THE TECHNICAL MATERIEL CORP. MAMARONECK, NEW YORK	
		STOCK SIZE		
		MATERIAL		
			LETTERING, BRACKET, CAPACITOR	
			ab [Signature]	[Signature]
		TYPE & TEMPER	DRAWN	CHECKER
		HEAT TREAT. SPEC.		FINAL APPROVAL
			[Signature]	
		FINISH & SPEC. NO.	ELEC. DES. APP.	MECH. DES. APP.
			LD-981	A

LD-984 C



NOTE:
4 HOLES REQ.
7/64 (.109) DIA.

NOTICE TO PERSONS RECEIVING THIS DRAWING

THE TECHNICAL MATERIEL CORPORATION claims proprietary right in the material disclosed hereon. This drawing is issued in confidence for engineering information only and may not be reproduced or used to manufacture anything shown hereon without permission from THE TECHNICAL MATERIEL CORPORATION to the user. This drawing is loaned for mutual assistance and is subject to recall at any time.

Property of:

THE TECHNICAL MATERIEL CORPORATION
MAMARONECK, NEW YORK

NOTE:

- 1- PRINTED DIRECTLY ON FACE OF PLASTIC
- 2- MATERIAL: POLISHED WHITE OPAQUE VINYL PLASTIC
- 3- 3/16 x 1 BLOCK, AREA TO BE LEFT UNPOLISHED.

SYM	DESCRIPTION	DATE	CH. NO.	DRAFTS	CHECKER	ENG. APP.
C	TITLE REVISED, 3/16 x 1 BLOCK ADDED	4-9-63	8742	RC	Hoe	[Signature]
D	FINISH DELETED	2-1-63	8168	EF	Hoe	[Signature]
A	FINISH WAS LAMINATED, NOTE ADDED MATERIAL WAS VINYL PLASTIC	7-18-62	6925	H	[Signature]	[Signature]

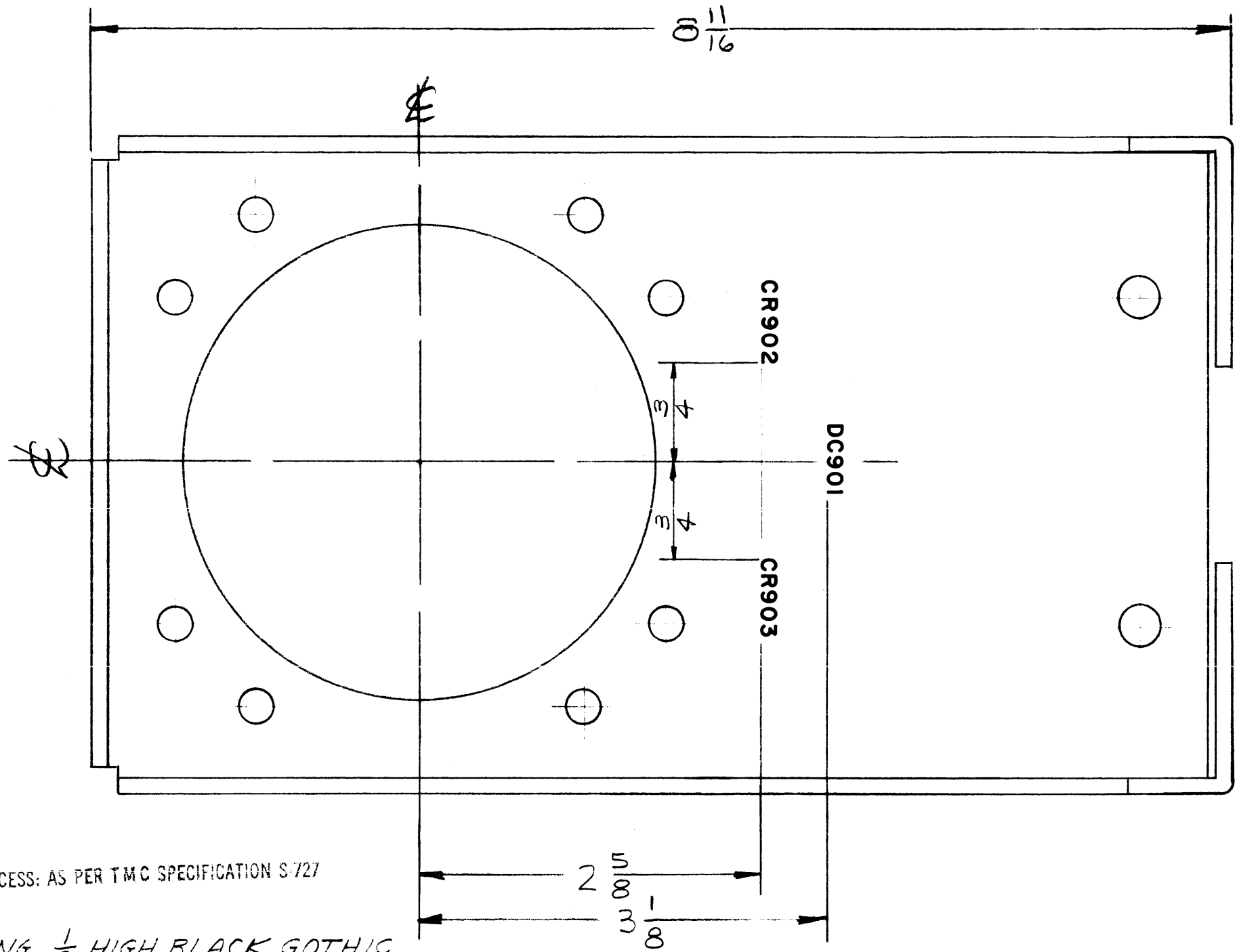
UNLESS OTHERWISE SPECIFIED:
DIMENSIONS ARE IN INCHES
TOLERANCES ON FRACTIONS ± 1/64 DECIMALS ± .005 ANGLES ± 1/2°

SCALE: ~
MAXIMUM ALLOWABLE TOLERANCES HAVE BEEN DETERMINED AND ANY DEVIATIONS WILL BE CAUSE FOR REJECTION.
REMOVE ALL BURRS AND SHARP EDGES

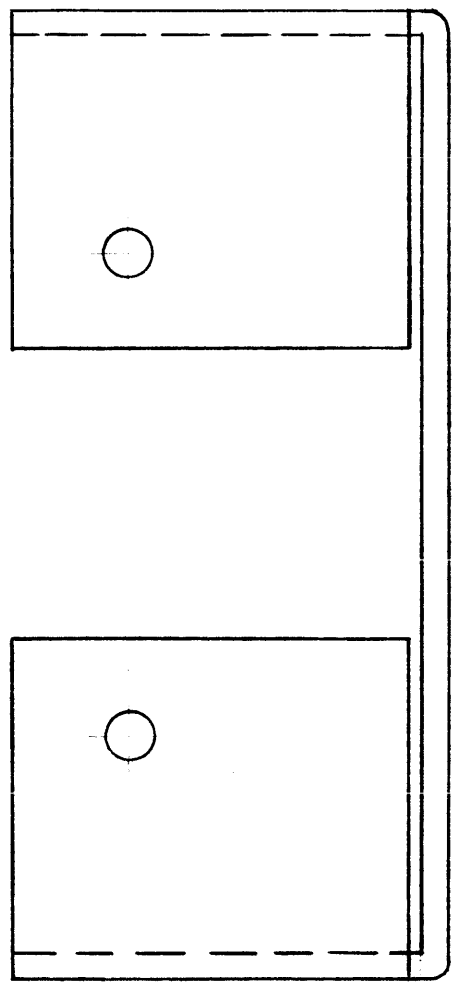
1	RAC-37				10-6-61
REQ. PER UNIT	MODEL	SECTION	ASS'Y. NO.	DATE	
	USED ON				

REQ. ITEM	PART NO.	DESCRIPTION	SYMBOL
	.015	THE TECHNICAL MATERIEL CORP. MAMARONECK, NEW YORK	
	SEE NOTE #2	SCHEMATIC DIAGRAM	
		MODEL RAC-37	
		W.S. 10-6-61	C.E. SIM
		DRAWN	CHECKER
		FINAL APPROVAL	
			LD-984 C

LD-993 A



TOP VIEW



MARKING PROCESS: AS PER TMC SPECIFICATION S-727

LETTERING 1/8 HIGH BLACK GOTHIC

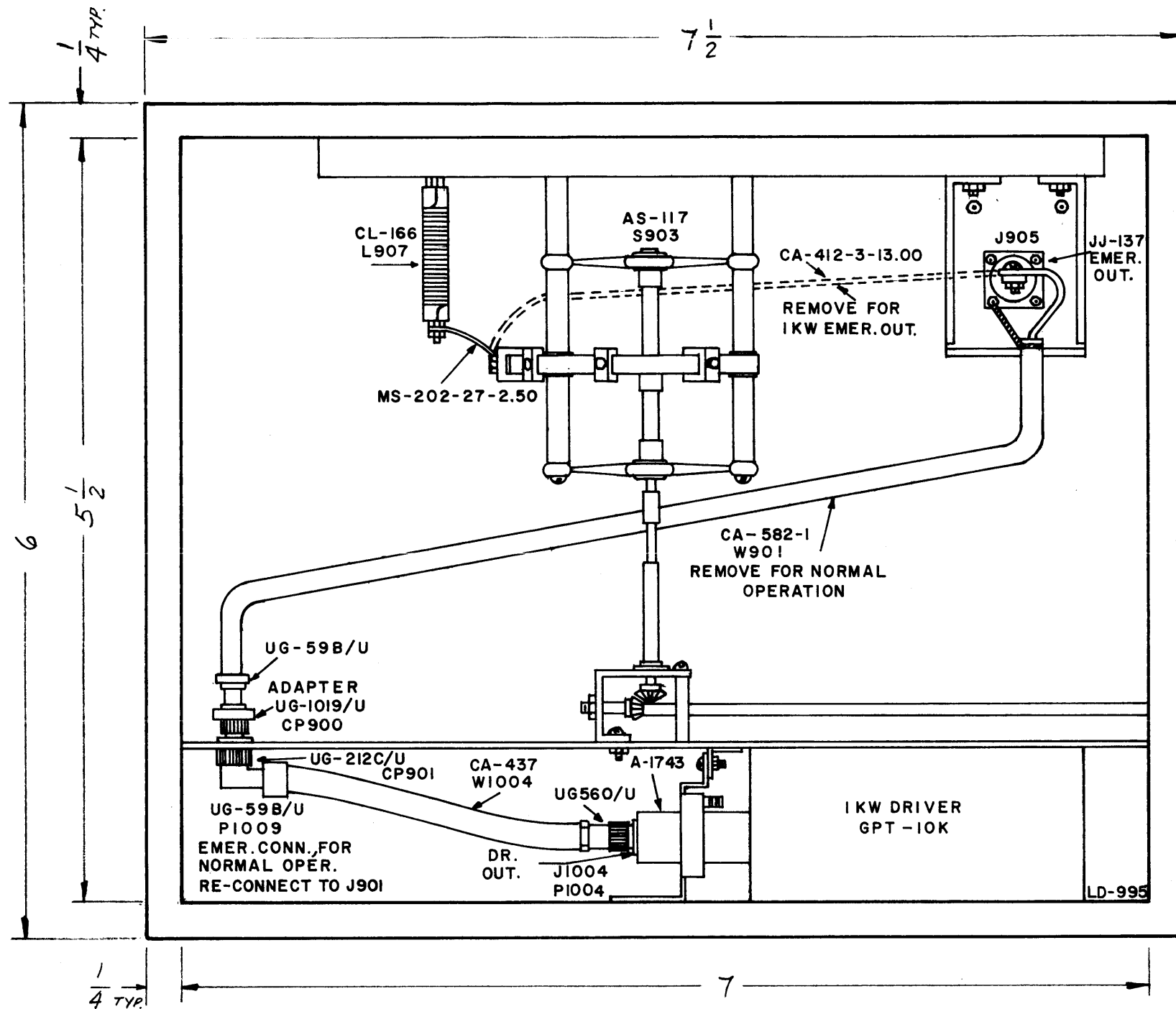
REF: MS-2701

SYM	DESCRIPTION	DATE	CH. NO.	DRAFTS	CHECKER	ENG. APP.
A	2 HOLES DELE. FROM TOP VIEW CP902 & CP903 MARKING DELETED	7.13.64	11813	hfb	gfb	gfb
UNLESS OTHERWISE SPECIFIED:		SCALE:				
DIMENSIONS ARE IN INCHES		MAXIMUM ALLOWABLE TOLERANCES HAVE BEEN DETERMINED AND ANY DEVIATIONS WILL BE CAUSE FOR REJECTION. REMOVE ALL BURRS AND SHARP EDGES				
TOLERANCES ON		A				
FRACTIONS ± 1/64		DECIMALS ± .005				
		ANGLES ± 1/2°				

1	RIT-113		A-2233	10-20-61
REQ. PER UNIT	MODEL	SECTION	ASS'Y. NO.	DATE
USED ON				

REQ. ITEM	PART NO.	DESCRIPTION		SYMBOL
—		THE TECHNICAL MATERIEL CORP. MAMARONECK, NEW YORK		
—		LETTERING, MTG., BKT. COUPLER		
—		gfb	RUIZZO	gfb
—		DRAWN	CHECKER	FINAL APPROVAL
—		gfb	aa	LD-993 A
—		ELEC. DES. APP.	MECH. DES. APP.	

LD-995 A



NOTES:
 1-ALL LETTERING & LINEWORK TO BE BLACK ON A WHITE BACKGROUND.
 2-TO BE SUPPLIED WITH ADHESIVE BACKING.

NOTE:
 PRINTED DIRECTLY ON FACE OF PLASTIC.

NOTICE TO PERSONS RECEIVING THIS DRAWING

THE TECHNICAL MATERIEL CORPORATION claims proprietary right in the material disclosed hereon. This drawing is issued in confidence for engineering information only and may not be reproduced or used to manufacture anything shown hereon without permission from THE TECHNICAL MATERIEL CORPORATION to the user. This drawing is loaned for mutual assistance and is subject to recall at any time.

Property of:
 THE TECHNICAL MATERIEL CORPORATION
 MAMARONECK, NEW YORK

SYM	DESCRIPTION	DATE	CH. NO.	DRAFTS	CHECKER	ENG. APP.
A	FINISH & NOTE ADDED MATEL WAS VINYL PLASTIC LAMINATED	7-18-62	6925			

UNLESS OTHERWISE SPECIFIED:
 DIMENSIONS ARE IN INCHES
 TOLERANCES ON FRACTIONS ± 1/64 DECIMALS ± .5 ANGLES ± 1/2°

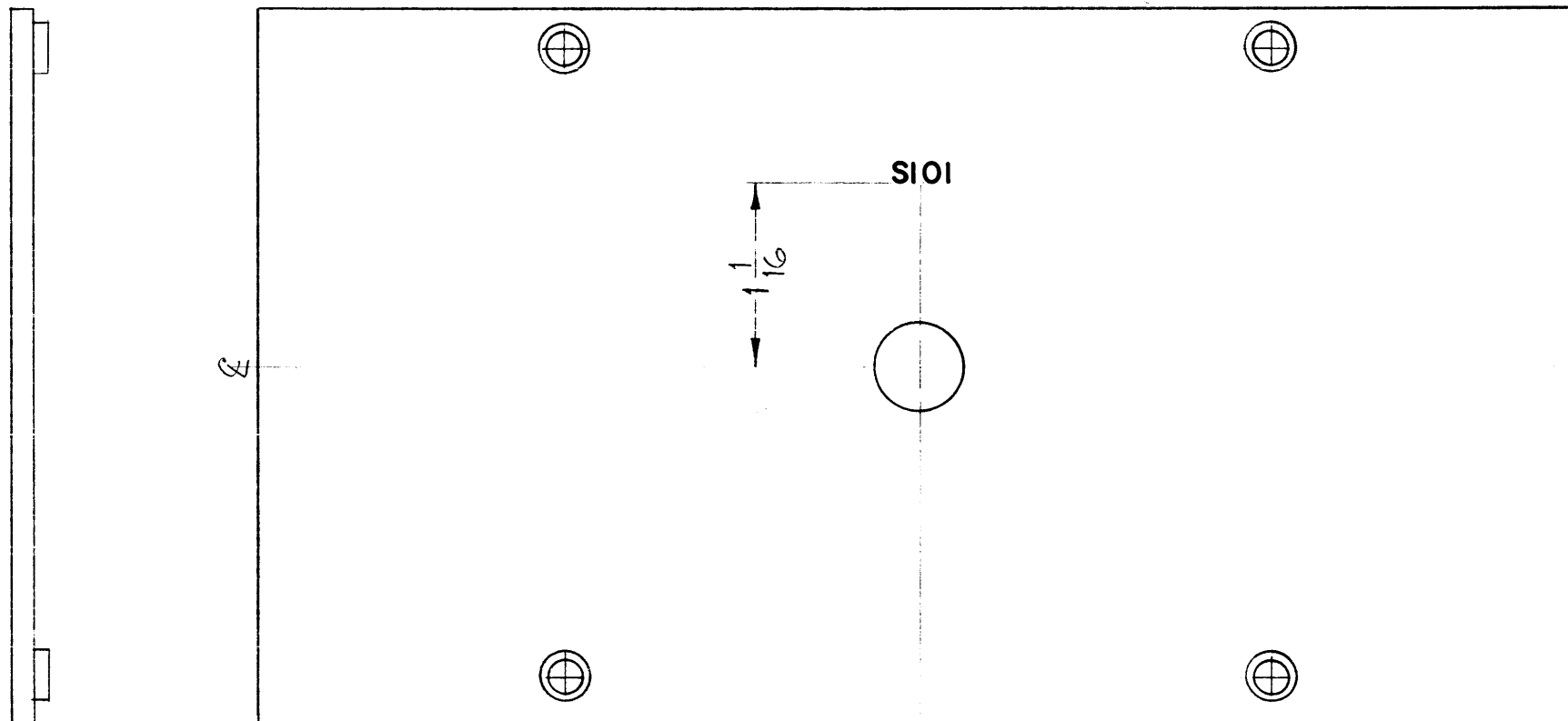
SCALE:
 MAXIMUM ALLOWABLE TOLERANCES HAVE BEEN DETERMINED AND ANY DEVIATIONS WILL BE CAUSE FOR REJECTION.
 REMOVE ALL BURRS AND SHARP EDGES

REQ. PER UNIT	MODEL	SECTION	ASS'Y. NO.	DATE
1	GPT-10K		AX-238	11-4-61

USED ON

REQ. ITEM	PART NO.	DESCRIPTION	SYMBOL
	.015 THICK	THE TECHNICAL MATERIEL CORP. MAMARONECK, NEW YORK	
	STOCK SIZE		
	WHITE OPAQUE VINYL PLASTIC	1 KW EMERGENCY OUTPUT	
	MATERIAL	GPT-40K	
		AK	RL770
		DRAWN	CHECKER
			FINAL APPROVAL
		Polished Front & Rear	
		FINISH & SPEC. NO.	
		ELEC. DES. APP.	MECH. DES. APP.
		LD-995	A

LD-997



REAR VIEW

LETTERING TO BE $\frac{1}{8}$ HIGH BLACK GOTHIC.

NOTICE TO PERSONS RECEIVING THIS DRAWING

THE TECHNICAL MATERIEL CORPORATION claims proprietary right in the material disclosed hereon. This drawing is issued in confidence for engineering information only and may not be reproduced or used to manufacture anything shown hereon without permission from THE TECHNICAL MATERIEL CORPORATION to the user. This drawing is loaned for mutual assistance and is subject to recall at any time.

Property of:
THE TECHNICAL MATERIEL CORPORATION
MAMARONECK, NEW YORK

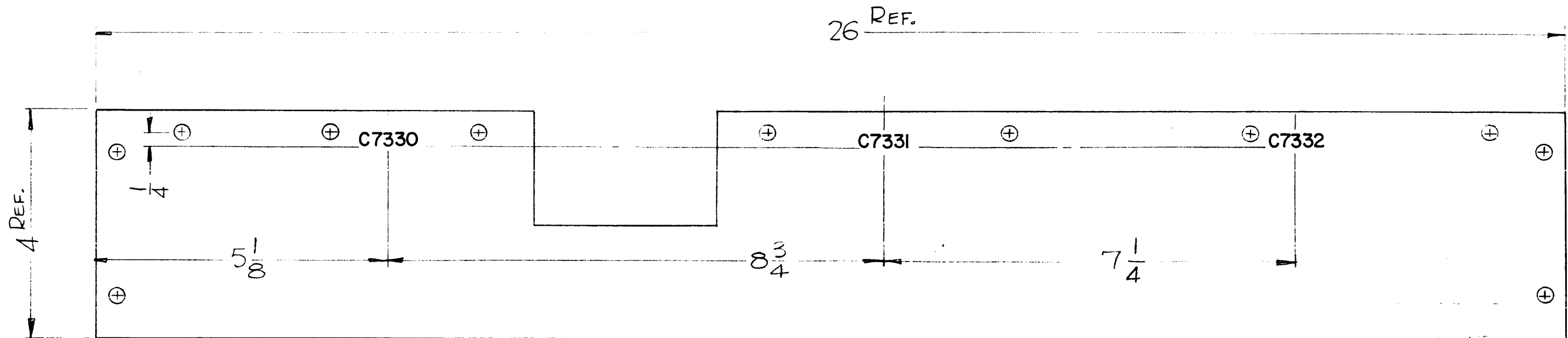
REF: MS-2732 (2).

SYM	DESCRIPTION	DATE	CH. NO.	DRAFTS	CHECKER	ENG. APP.
UNLESS OTHERWISE SPECIFIED: DIMENSIONS ARE IN INCHES TOLERANCES ON FRACTIONS $\pm 1/64$ DECIMALS $\pm .005$ ANGLES $\pm 1/2^\circ$		SCALE: DO NOT SCALE MAXIMUM ALLOWABLE TOLERANCES HAVE BEEN DETERMINED AND ANY DEVIATIONS WILL BE CAUSE FOR REJECTION. REMOVE ALL BURRS AND SHARP EDGES				

1	TER-25K-A-50			11-18-61
REQ. PER UNIT	MODEL	SECTION	ASS'Y. NO.	DATE
USED ON				

REQ. ITEM	PART NO.	DESCRIPTION			SYMBOL
		THE TECHNICAL MATERIEL CORP. MAMARONECK, NEW YORK			
STOCK SIZE		REAR LETTERING SWITCH MTG. PLATE			
MATERIAL					
		<i>MAT</i>	<i>J.W.C.</i>	<i>20</i>	
TYPE & TEMPER	HEAT TREAT. SPEC.	DRAWN	CHECKER	FINAL APPROVAL	
			<i>[Signature]</i>	LD-997	
FINISH & SPEC. NO.		ELEC. DES. APP.	MECH. DES. APP.		

LD-979



MARKING PROCESS: AS PER TMC-SPEC S-727.
ALL LETTERING TO BE 1/8 HIGH BLACK GOTHIC

NOTICE TO PERSONS RECEIVING THIS DRAWING

THE TECHNICAL MATERIEL CORPORATION claims proprietary right in the material disclosed hereon. This drawing is issued in confidence for engineering information only and may not be reproduced or used to manufacture anything shown hereon without permission from THE TECHNICAL MATERIEL CORPORATION to the user. This drawing is loaned for mutual assistance and is subject to recall at any time.

Property of:
THE TECHNICAL MATERIEL CORPORATION
MAMARONECK, NEW YORK

REF. ~ PX-504(2)

SYM	DESCRIPTION	DATE	CH. NO.	DRAFTS	CHECKER	ENG. APP.

UNLESS OTHERWISE SPECIFIED:
DIMENSIONS ARE IN INCHES
TOLERANCES ON FRACTIONS ± 1/64 DECIMALS ± .005 ANGLES ± 1/2°

SCALE: (DO NOT SCALE)
MAXIMUM ALLOWABLE TOLERANCES HAVE BEEN DETERMINED AND ANY DEVIATIONS WILL BE CAUSE FOR REJECTION.
REMOVE ALL BURRS AND SHARP EDGES

1	GPT-40K	AX-275		11-4-61
REQ. PER UNIT	MODEL	SECTION	ASS'Y. NO.	DATE
	USED ON			

REQ. ITEM	PART NO.	DESCRIPTION	SYMBOL
		THE TECHNICAL MATERIEL CORP. MAMARONECK, NEW YORK	
	STOCK SIZE	LETTERING, FRONT CAPACITOR SUPPORT	
	MATERIAL		
		D. J. Man	Q. B.
	TYPE & TEMPER	DRAWN	CHECKER
	HEAT TREAT. SPEC.		FINAL APPROVAL
	FINISH & SPEC. NO.		LD-979
		ELEC. DES. APP.	MECH. DES. APP.