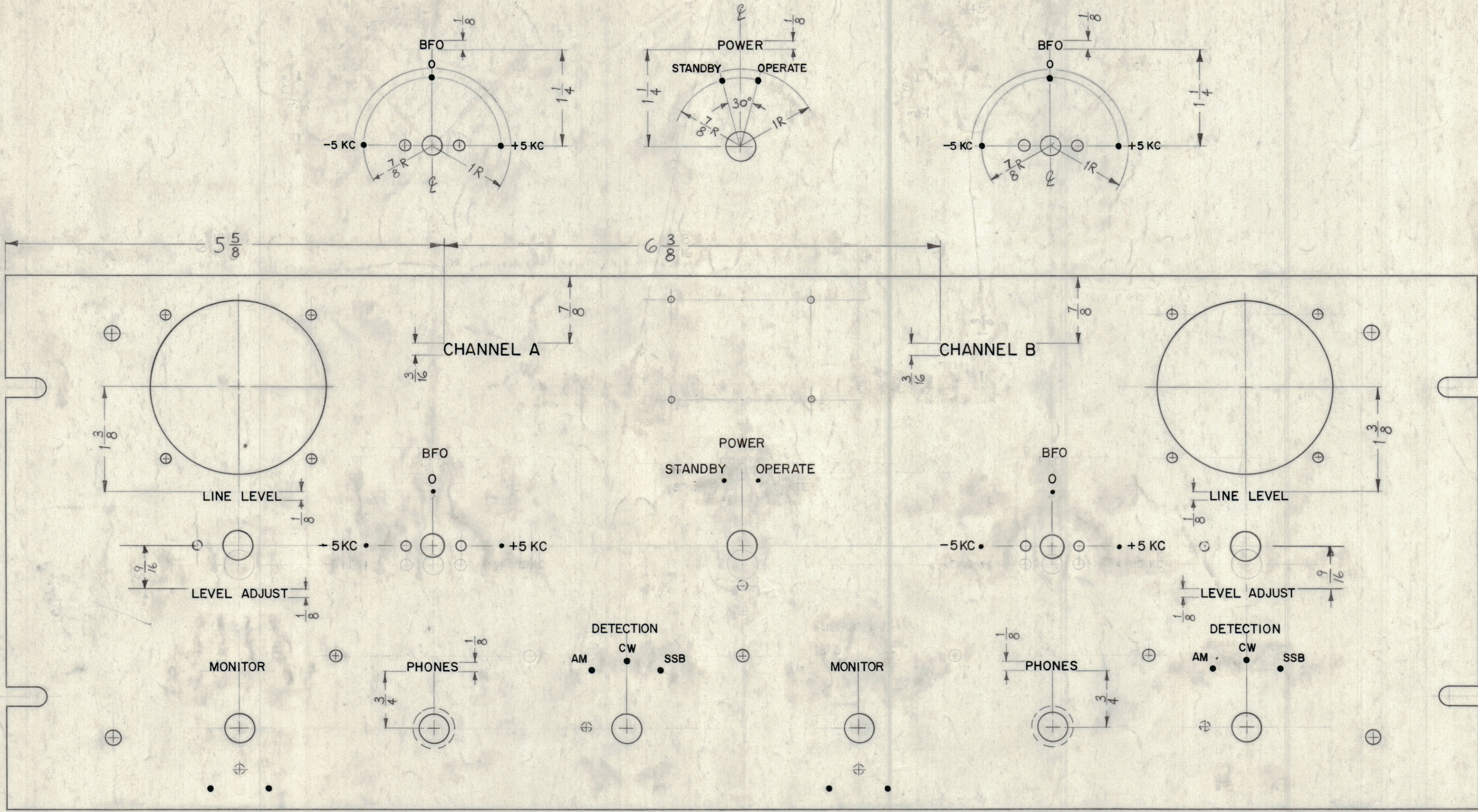
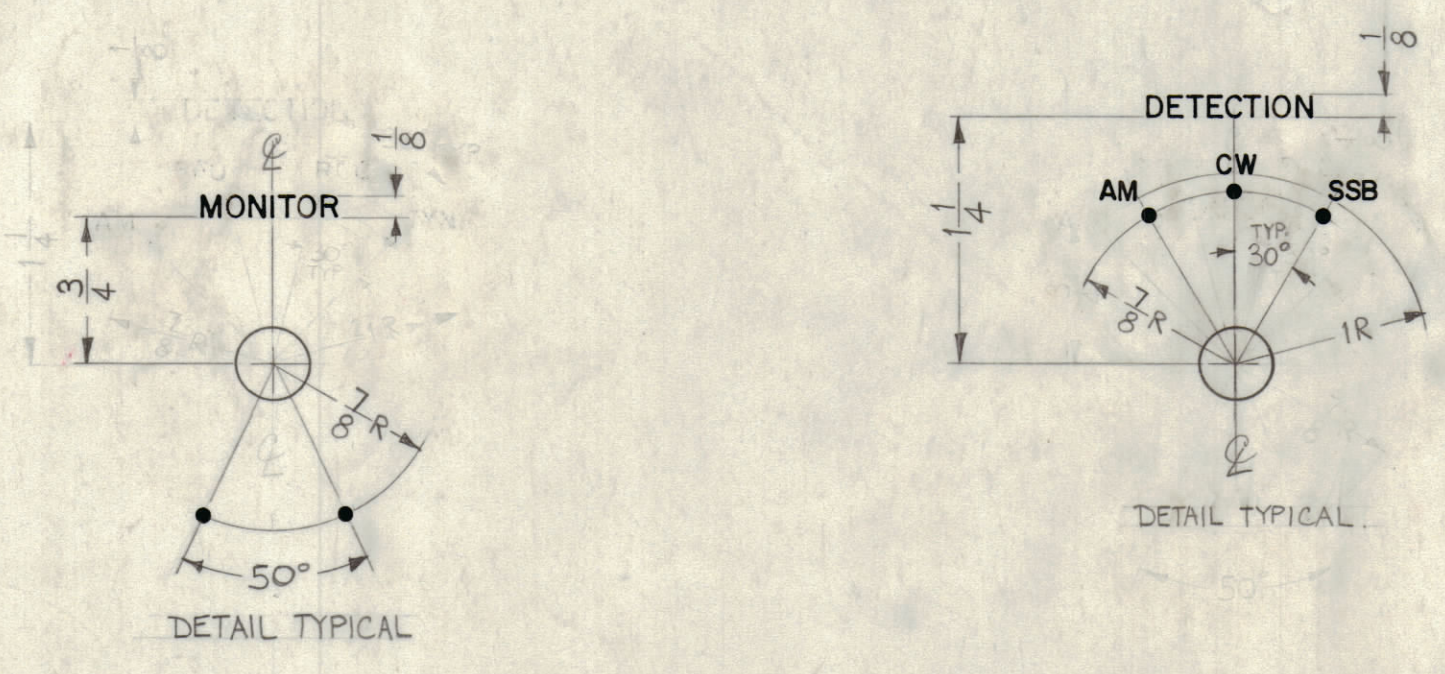


NOTICE TO PERSONS RECEIVING THIS DRAWING
 THE TECHNICAL MATERIEL CORPORATION claims proprietary right in the material disclosed herein. This drawing is issued in confidence for engineering information only and may not be reproduced or used to manufacture anything shown hereon without permission from THE TECHNICAL MATERIEL CORPORATION to the user. This drawing is loaned for mutual assistance and is subject to recall at any time.
 Property of:
 THE TECHNICAL MATERIEL CORPORATION
 MAMARONECK, NEW YORK



UNLESS OTHERWISE SPECIFIED -
 1-ALL ENGRAVING TO BE 3/32 WHITE FILLED GOTHIC.
 2-ALL DOTS TO BE WHITE FILLED.
 3-ALL LINES TO BE WHITE FILLED.

LETTER HEIGHT	DEPTH OF STROKE	WIDTH OF STROKE
3/32	.010	.015
1/8	.010	.020
3/16	.010	.025
DOTS	.010	1/16
LINES	.010	.015

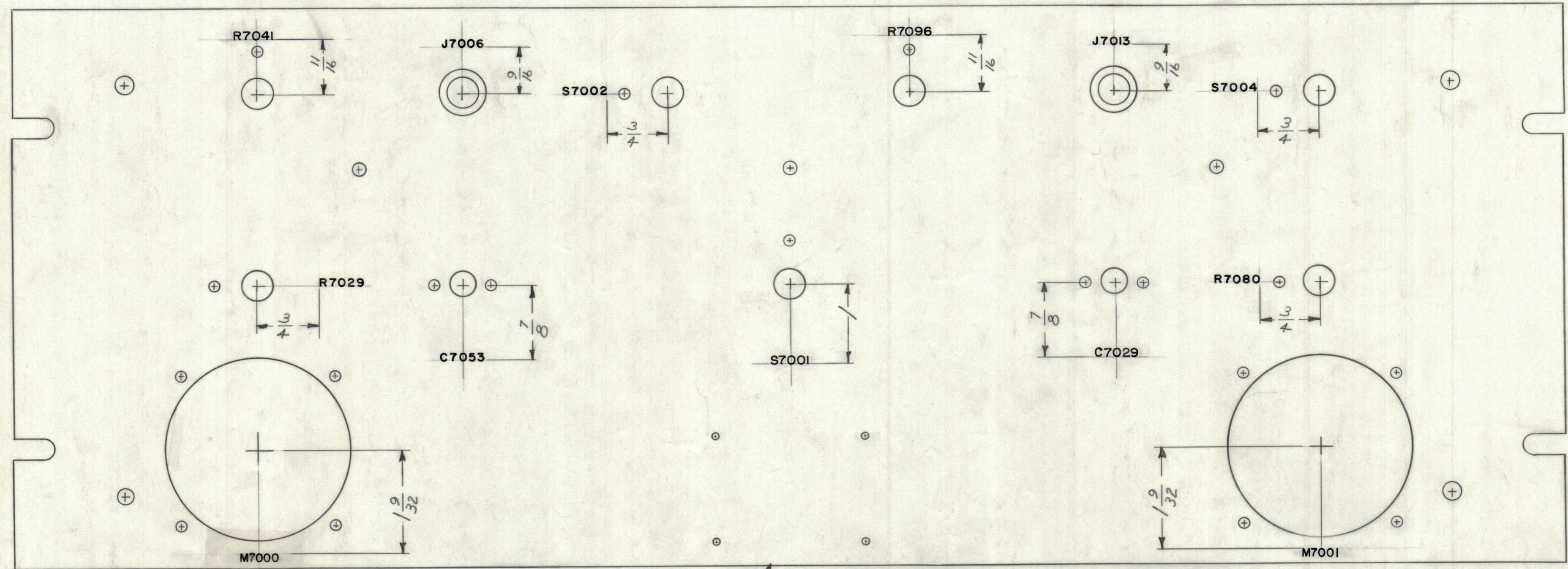


SYM	ZONE	DESCRIPTION	DATE	CH. NO.	DRAFTS	CHECKER	ENG. APP.
UNLESS OTHERWISE SPECIFIED:							
DIMENSIONS ARE IN INCHES			SCALE				
TOLERANCES ON FRACTIONS ± 1/64			MAXIMUM ALLOWABLE TOLERANCES HAVE BEEN DETERMINED AND ANY DEVIATIONS WILL BE CAUSE FOR REJECTION. REMOVE ALL BURRS & SHARP EDGES				
DECIMALS ± .005			ANGLES ± 1/2°				

REQ. ITEM	PART NO.	DESCRIPTION	SYMBOL
1	HFA-1	AUDIO DECK	
THE TECHNICAL MATERIEL CORP. MAMARONECK, NEW YORK			
ENGRAVING, FRONT PANEL			
MATERIAL			
TYPE & TEMPER			
HEAT TREAT. SPEC.			
FINISH & SPEC. NO.			
DRAWN: <i>M.A.P.</i> CHECKED: <i>H.W.</i> FINAL APPROVAL: <i>R.P.</i>			
ELEC. DES. APP. MECH. DES. APP. SHEET 1 OF 2			

LD-994

NOTICE TO PERSONS RECEIVING THIS DRAWING
 THE TECHNICAL MATERIEL CORPORATION claims proprietary right in the material disclosed hereon. This drawing is issued in confidence for engineering information only and may not be reproduced or used to manufacture anything shown hereon without permission from THE TECHNICAL MATERIEL CORPORATION to the user. This drawing is loaned for mutual assistance and is subject to recall at any time.
 Property of:
 THE TECHNICAL MATERIEL CORPORATION
 MAMARONECK, NEW YORK



TOP OF PANEL

UNLESS OTHERWISE SPECIFIED
 1. ALL LETTERING TO BE 1/8 HIGH BLACK LUSTERLESS, GOTHIC
 MARKING PROCESS: AS PER TMC SPECIFICATION S-727

LD-994

SYM	ZONE	DESCRIPTION	DATE	CH. NO.	DRAFTS	CHECKER	ENG. APP.
UNLESS OTHERWISE SPECIFIED:			SCALE				
DIMENSIONS ARE IN INCHES			MAXIMUM ALLOWABLE TOLERANCES HAVE BEEN DETERMINED AND ANY DEVIATIONS WILL BE CAUSE FOR REJECTION. REMOVE ALL BURRS & SHARP EDGES				
TOLERANCES ON FRACTIONS ± 1/64			DECIMALS ± .005		ANGLES ± 1/2°		

REF: MS-2720 (8)

REQ. ITEM	PART NO.	DESCRIPTION	SYMBOL
THE TECHNICAL MATERIEL CORP. MAMARONECK, NEW YORK			
LETTERING, FRONT PANEL, REAR			
MATERIAL			
DRAWN		CHECKED	FINAL APPROVAL
G. SENCEN		H. W.	BP
O.R. Jaisa		LD-994	
FINISH & SPEC. NO.			
ELEC. DES. APP.		MECH. DES. APP.	
SHEET 2 OF 2			