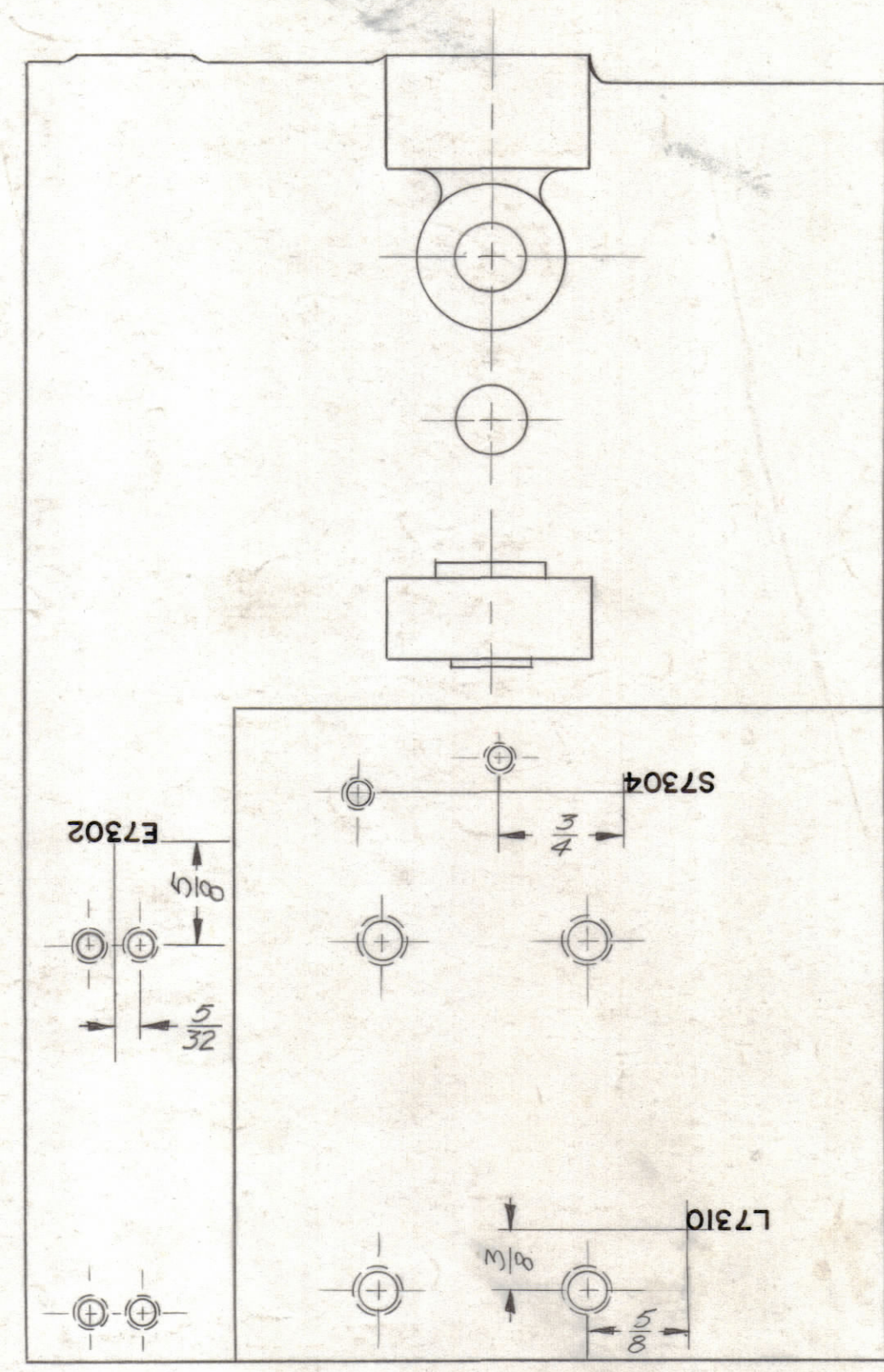
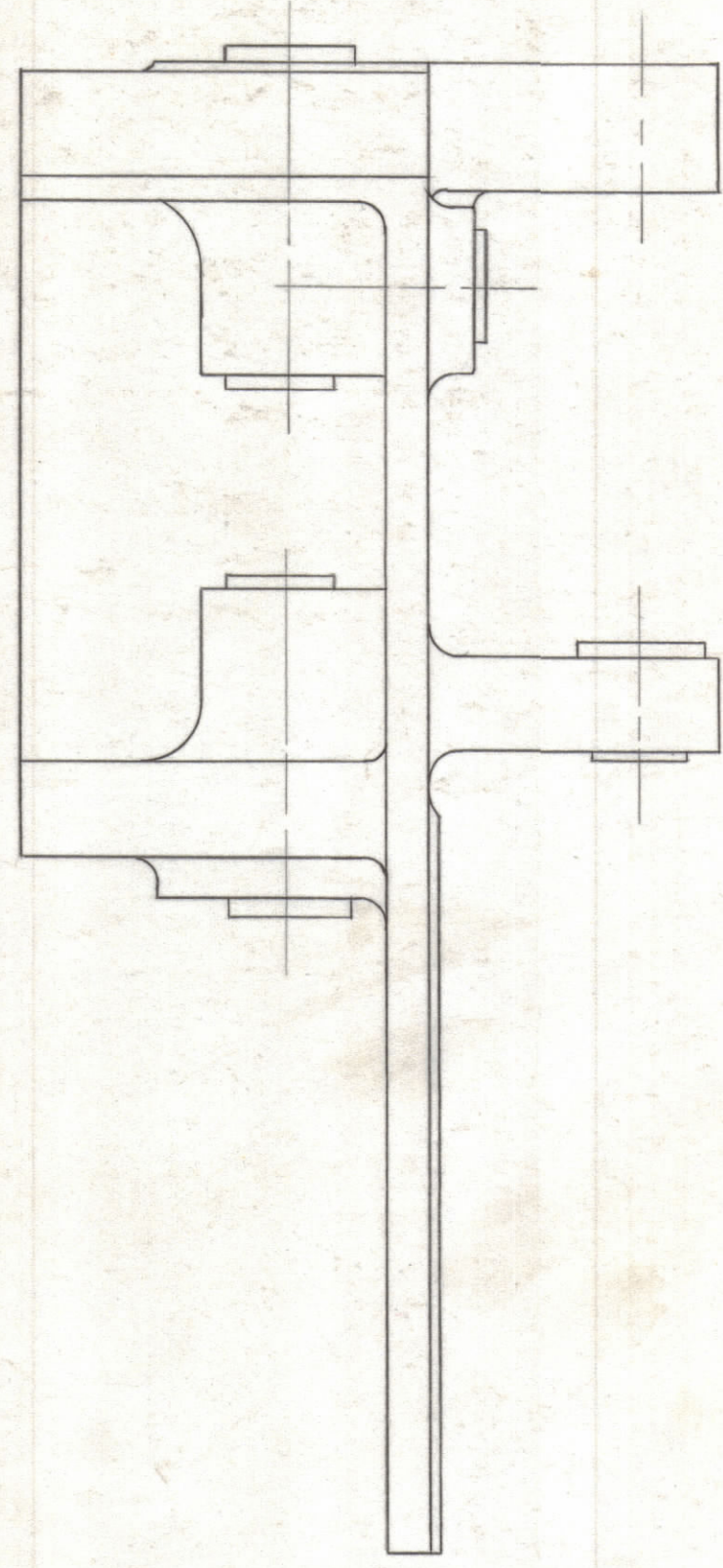


NOTICE TO PERSONS RECEIVING THIS DRAWING

THE TECHNICAL MATERIEL CORPORATION claims proprietary right in the material disclosed hereon. This drawing is issued in confidence or engineering information only and may not be re-used or used to manufacture anything shown hereon without permission from THE TECHNICAL MATERIEL CORPORATION to the user. This drawing is loaned for mutual assistance and is subject to recall at any time.

Property of:

THE TECHNICAL MATERIEL CORPORATION
MAMARONECK, NEW YORK



- 1- MARKING PROCESS : AS PER TMC SPECIFICATION S-727
- 2- LETTERING : 1/8 HIGH COPPER PLATE, GOTHIC NORMAL, LOCATED AS SHOWN.
- 3- COLOR : CLEAR LUSTERLESS BLACK, BAKING SYNTHETIC ENAMEL; FED. STD. 595, TYPE 37038 (BLACK).
- 4- ALL LETTER GROUPS TO BE CENTERED ON HOLES OR INDICATING LINES, UNLESS OTHERWISE SPECIFIED.

REF. PM-661

SYM	ZONE	DESCRIPTION	DATE	CH. NO.	DRAFTS	CHECKER	ENG. APP.
UNLESS OTHERWISE SPECIFIED:			SCALE DO NOT SCALE				
DIMENSIONS ARE IN INCHES			MAXIMUM ALLOWABLE TOLERANCES HAVE BEEN DETERMINED AND ANY DEVIATIONS WILL BE CAUSE FOR REJECTION. REMOVE ALL BURRS & SHARP EDGES				
TOLERANCES ON FRACTIONS ± 1/64			DECIMALS ± .005			ANGLES ± 1/2°	

REQ. PER UNIT	MODEL	SECTION	ASS'Y. NO.	DATE
1	GPT-40K	AX-244		11-10-61

REQ. ITEM	PART NO.	DESCRIPTION	SYMBOL
—	—	THE TECHNICAL MATERIEL CORP. MAMARONECK, NEW YORK	
—	—	LETTERING, B.S.W. RELEASE	
—	—	GEARBOX	
—	—	DRAWN	wh
—	—	CHECKED	RUZZO
—	—	FINAL APPROVAL	OR
—	—	ELEC. DES. APP.	aa
—	—	MECH. DES. APP.	
—	—	SHEET OF	LD-983