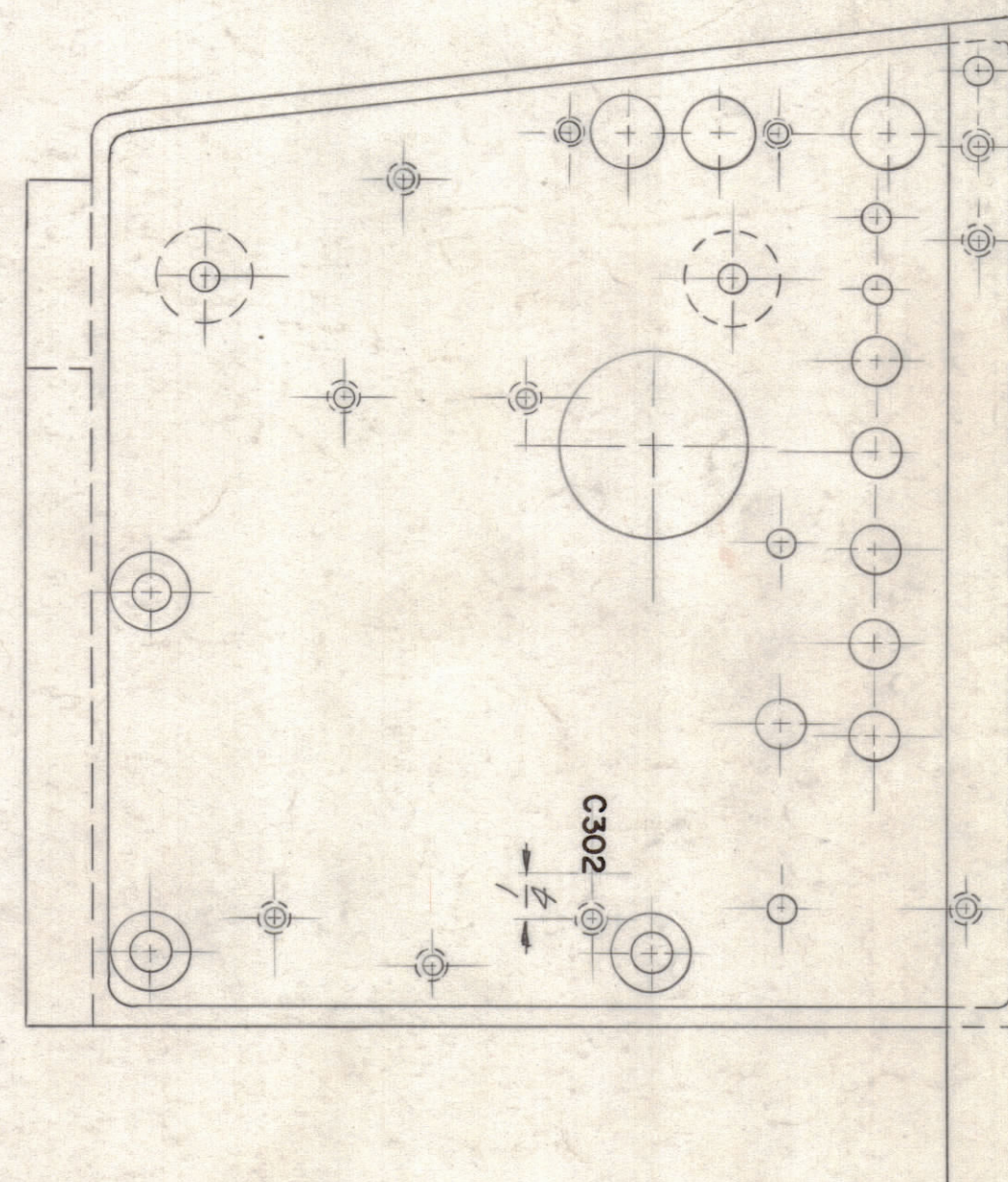
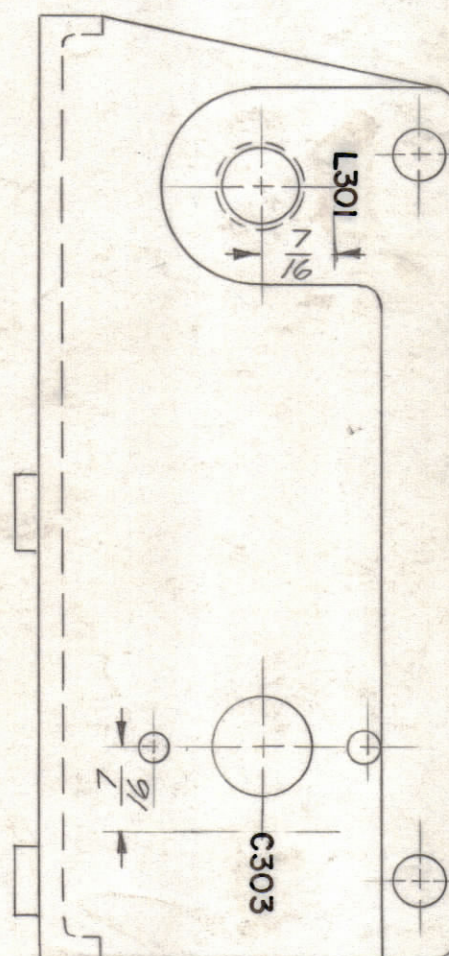
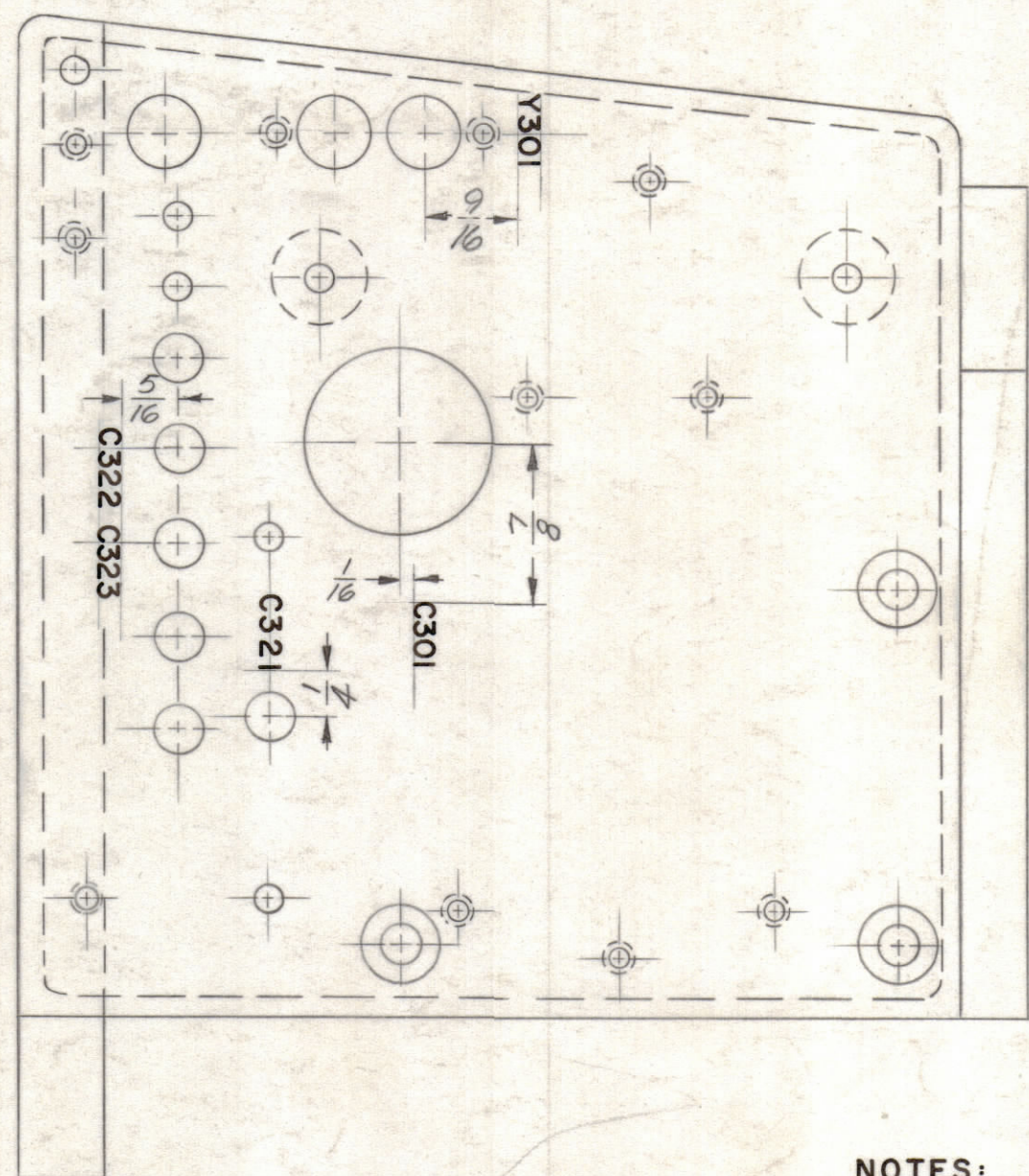
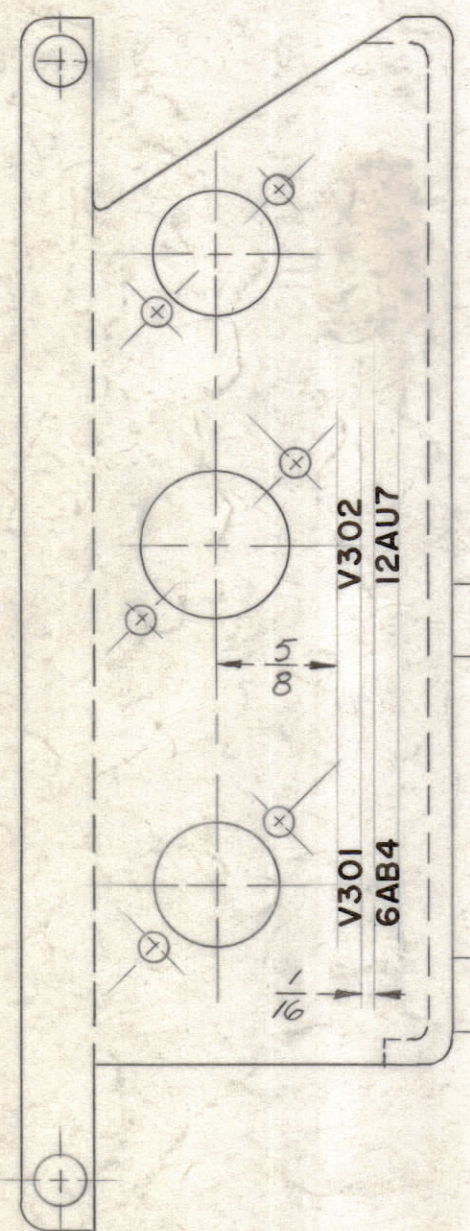
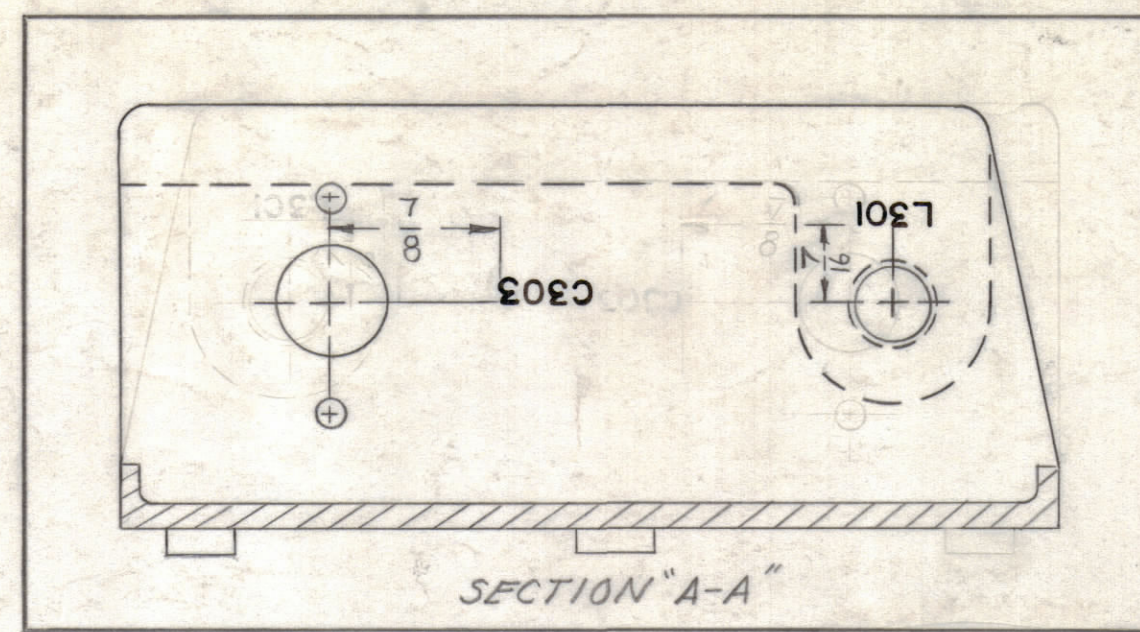
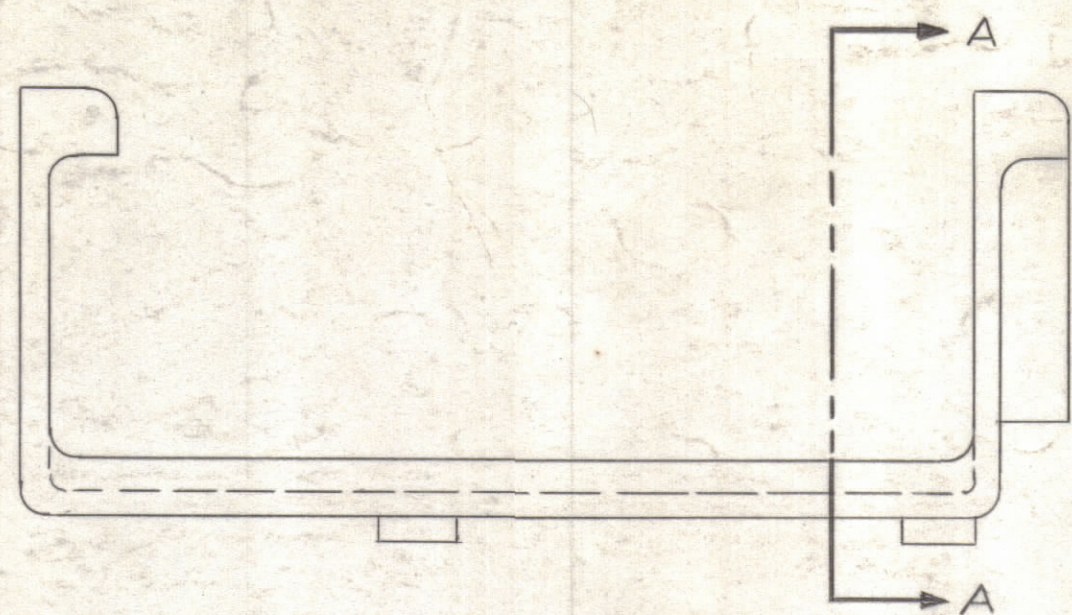


NOTICE TO PERSONS RECEIVING THIS DRAWING

THE TECHNICAL MATERIEL CORPORATION claims proprietary right in the material disclosed hereon. This drawing is issued in confidence for engineering information only and may not be reproduced or used to manufacture anything shown hereon without permission from THE TECHNICAL MATERIEL CORPORATION to the user. This drawing is loaned for mutual assistance and is subject to recall at any time.

Property of:  
THE TECHNICAL MATERIEL CORPORATION  
MAMARONECK, NEW YORK



NOTES:

ALL LETTERING TO BE 1/8 HIGH, BLACK GOTHIC,  
MARKING PROCESS: AS PER T.M.C SPECIFICATION S-727 CWN.

UNLESS OTHERWISE SPECIFIED, ALL LETTER GROUPS  
TO BE CENTERED ON HOLES OR INDICATING LINES.

REF: TPM 501  
PM 1334

C	ADDED PM1334 (REF)	3/17/67	CC	RME			
B	C303 WAS C305, ASSY NO. WAS A-1742	6/1/65	A-142				
A	SECTION "A-A" REVERSED 180°	2-12-65	13395				
SYM	ZONE	DESCRIPTION	DATE	CH. NO.	DRAFTS	CHECKER	ENG. APP.
UNLESS OTHERWISE SPECIFIED:			SCALE				
DIMENSIONS ARE IN INCHES			MAXIMUM ALLOWABLE TOLERANCES HAVE BEEN DETERMINED AND ANY DEVIATIONS WILL BE CAUSE FOR REJECTION. REMOVE ALL BURRS & SHARP EDGES				
TOLERANCES ON FRACTIONS ± 1/64			DECIMALS ± .005				
ANGLES ± 1/2°							

1	YOK PHD	KTF	AO-100	A-1742	9-29-61
REQ. PER UNIT	MODEL	SECTION	ASS'Y. NO.	DATE	USED ON

REQ. ITEM	PART NO.	DESCRIPTION	SYMBOL
		THE TECHNICAL MATERIEL CORP. MAMARONECK, NEW YORK	
STOCK SIZE		ALUMINUM	CHASSIS, OSCILLATOR LETTERING
MATERIAL		3404 YEL. IRIDITE	
TYPE & TEMPER		HEAT TREAT. SPEC.	
FINISH & SPEC. NO.		ELEC. DES. APP.	MECH. DES. APP.
		SHEET OF	