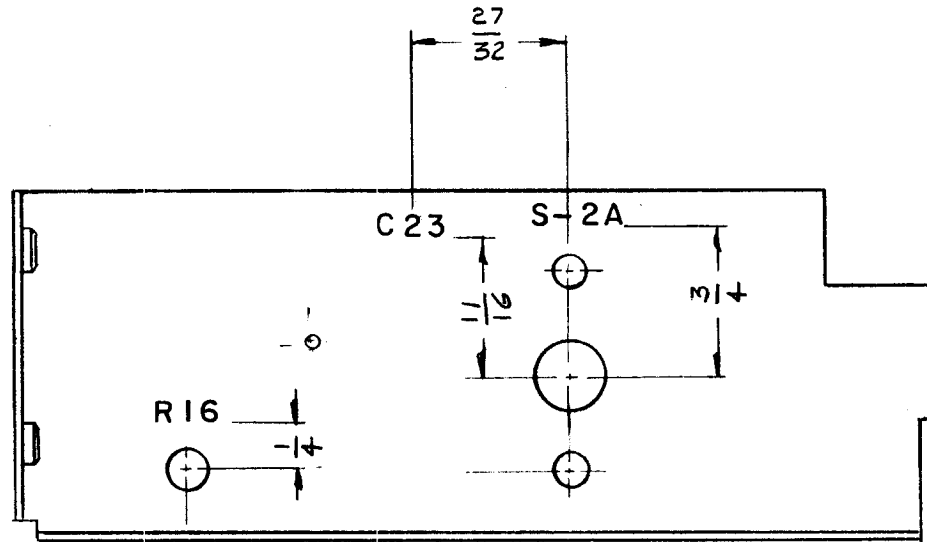


REQ. PER UNIT	USED ON			LD-952
	MODEL	ASSY. NO.	DATE	
1	GPE-1		8-5-61	



NOTE:

ALL LETTERING $\frac{1}{8}$ " HIGH BLACK GOTHIC

MARKING PROCESS: AS PER TMC SPECIFICATION S-727

REF: TMC. DWG. NO (2) MS-2621

ISSUE	ITEM	CHANGED FROM	DATE	CH. NO.	DRAFTS	CHECKER	ENG. APP.	REQ. ITEM	PART NO.	DESCRIPTION	SYMBOL		
										THE TECHNICAL MATERIEL CORP. MAMARONECK, NEW YORK			
									STOCK SIZE	LETTERING, FRONT R.F. SHIELD			
									MATERIAL				
									TYPE & TEMPER	HEAT TREAT. SPEC.			
									FINISH & SPEC. NO.	ELEC. DES. APP	MECH. DES. APP		
TOLERANCES			SCALE:							DRAWN: <i>[Signature]</i> CHECKED: <i>[Signature]</i> FINAL APPROVAL: <i>[Signature]</i>			
DEC. DIM. ± FRAC. DIM. ± ANGULAR DIM. ±			MAXIMUM ALLOWABLE TOLERANCES HAVE BEEN DETERMINED AND ANY DEVIATIONS WILL BE CAUSE FOR REJECTION. REMOVE ALL BURRS AND SHARP EDGES										LD-952