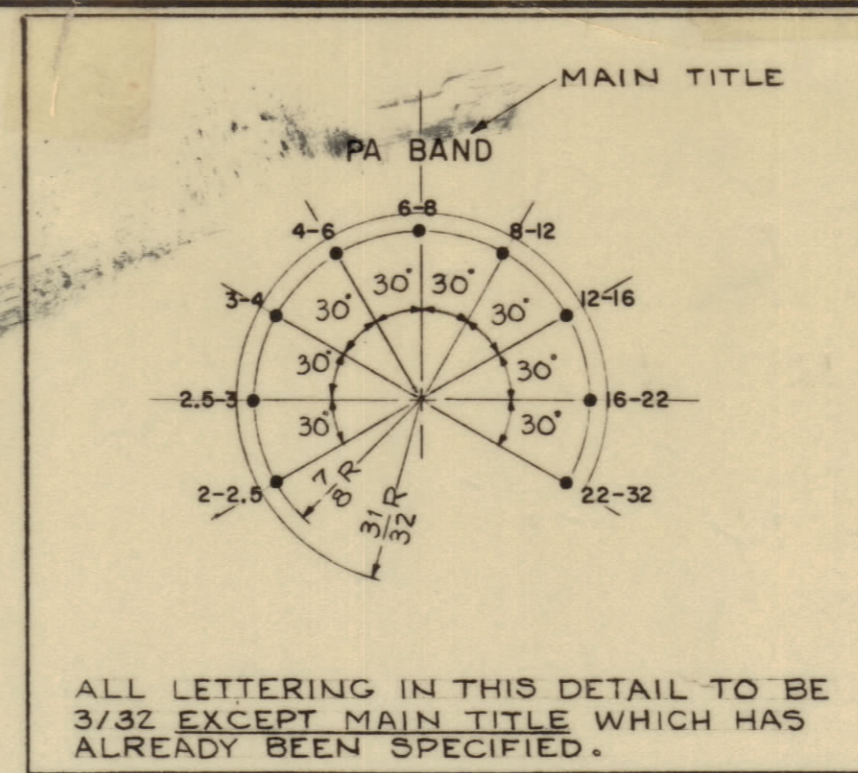
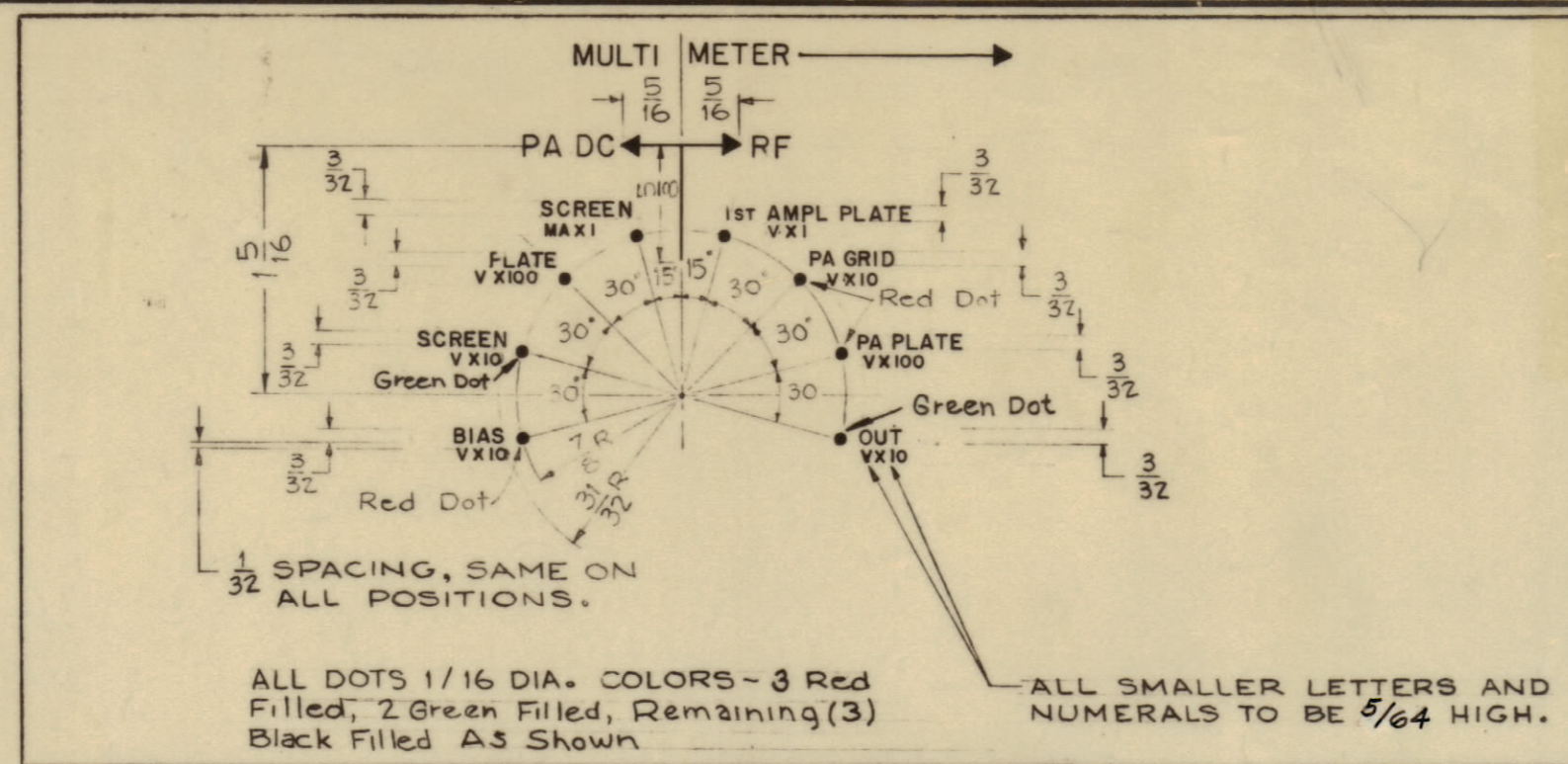
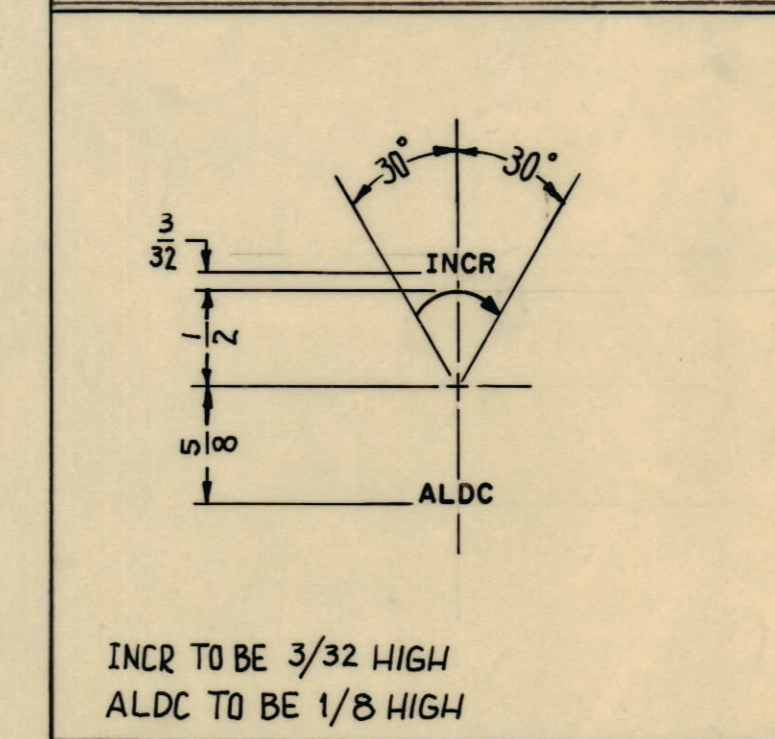
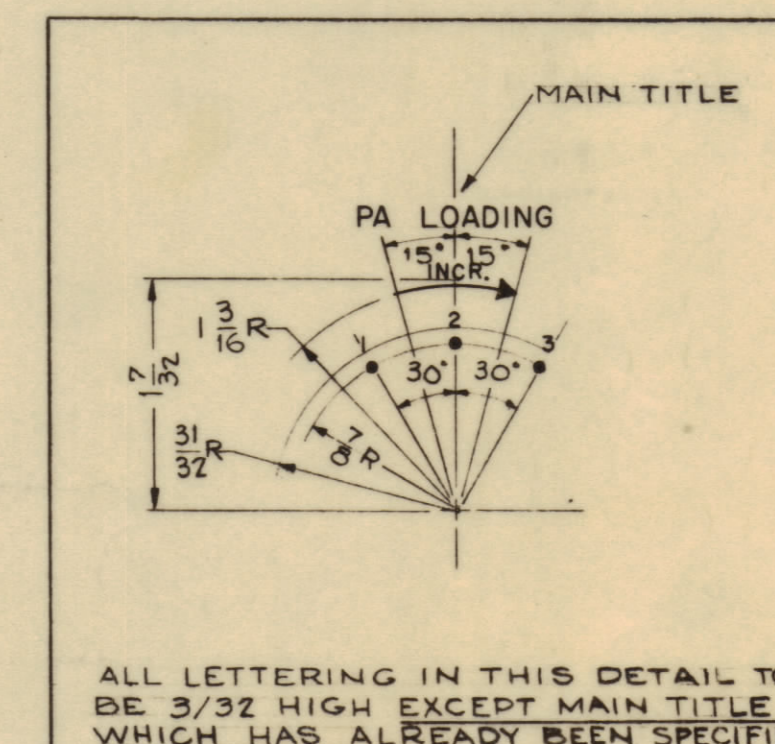
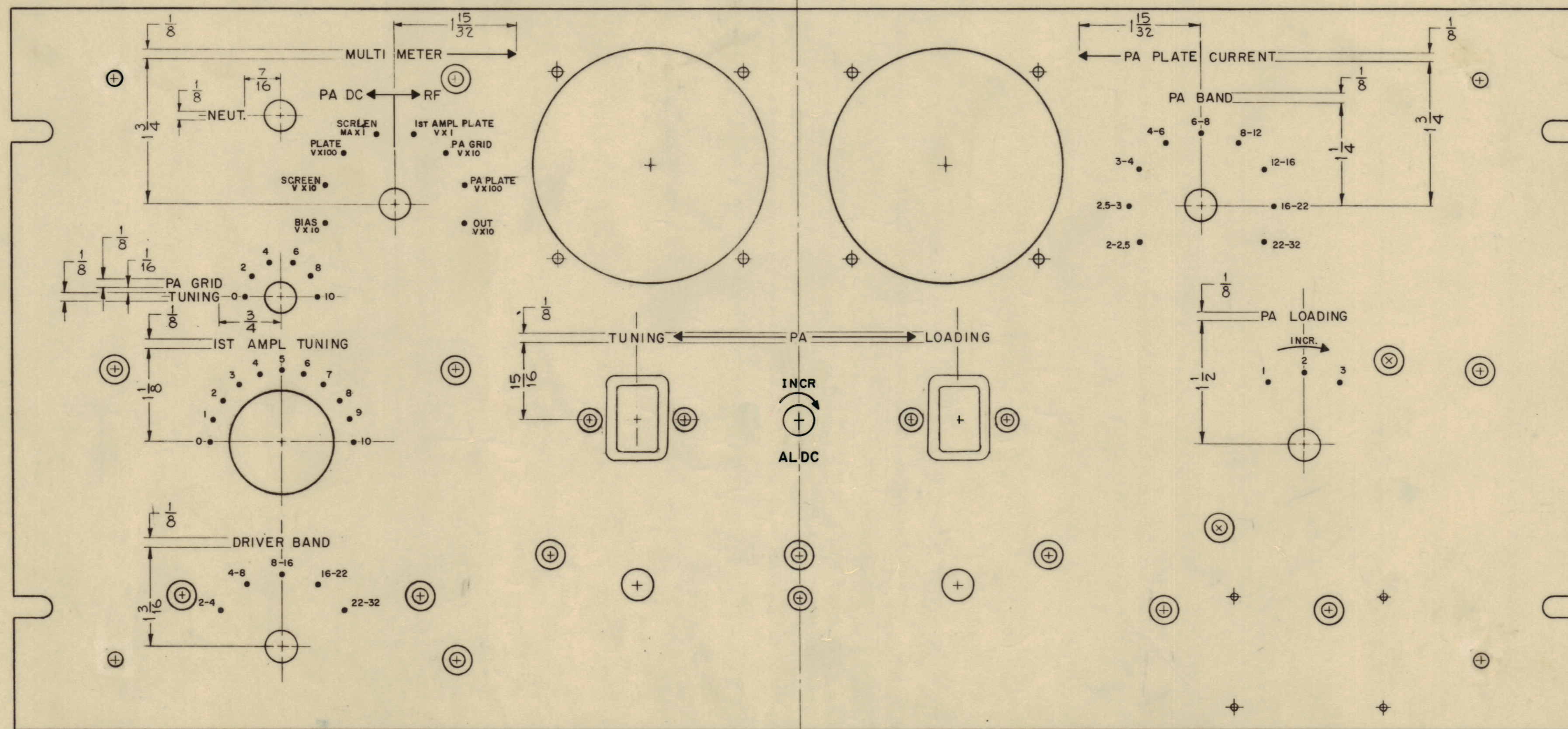
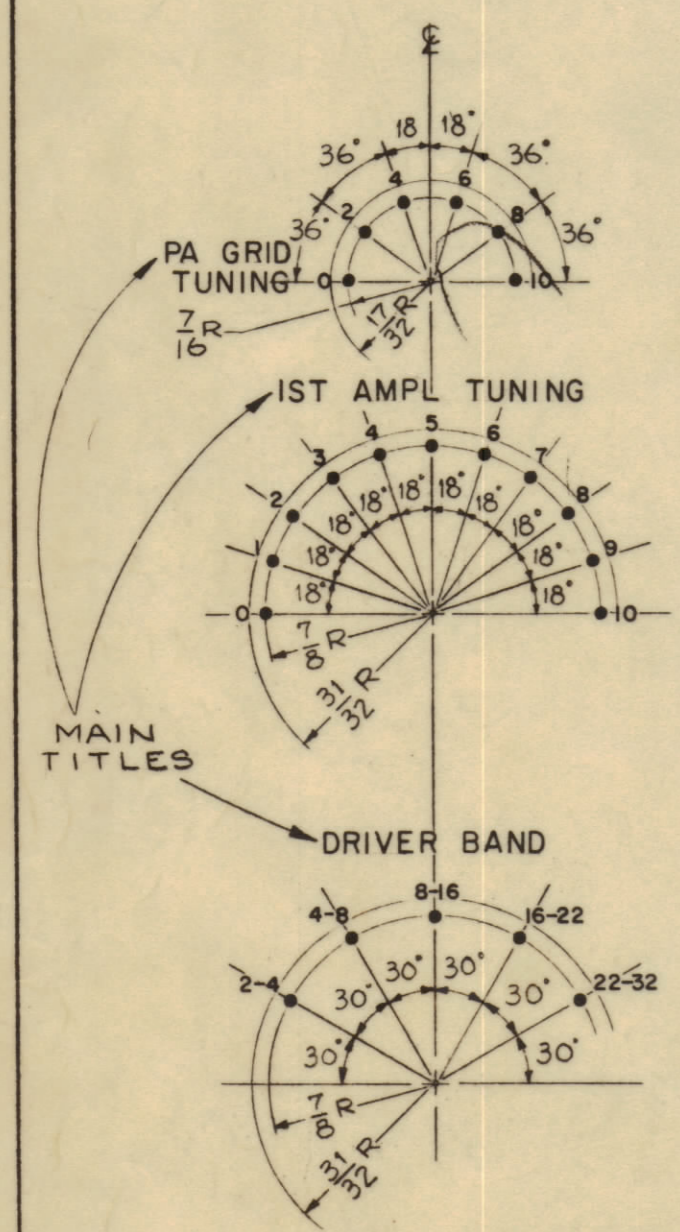


IT IS DESIRABLE TO CHANGE ANY TOLERANCE OTHER DETAIL SPECIFIED ON THIS DRAWING NOTIFY THE PURCHASER PROMPTLY.
 MAXIMUM ALLOWABLE TOLERANCES HAVE BEEN DETERMINED AND DEVIATIONS WILL BE CAUSE FOR REJECTION.
 REMOVE ALL BURRS AND SHARP EDGES



NOTICE TO PERSONS RECEIVING THIS DRAWING
 THE TECHNICAL MATERIEL CORPORATION claims proprietary right in the material disclosed hereon. This drawing is issued in confidence for engineering information only and may not be reproduced or used to manufacture anything shown hereon without permission from THE TECHNICAL MATERIEL CORPORATION to the user. This drawing is loaned for mutual assistance and is subject to recall at any time.
 Property of:
 THE TECHNICAL MATERIEL CORPORATION
 MAMARONECK, NEW YORK

ALL LETTERING IN THIS DETAIL TO BE 3/32 HIGH EXCEPT MAIN TITLES WHICH HAVE ALREADY BEEN SPECIFIED.



- NOTES -
- 1 - ALL DOTS TO BE 1/16 DIA., WHITE FILLED, UNLESS OTHERWISE SPECIFIED.
 - 2 - ALL LETTERING TO BE WHITE FILLED.
 - 3 - ALL ARROWHEADS TO BE 1/8 X 1/8 X 1/8 TRIANGLE, WHITE FILLED.
 - 4 - ALL LINES TO BE WHITE FILLED.

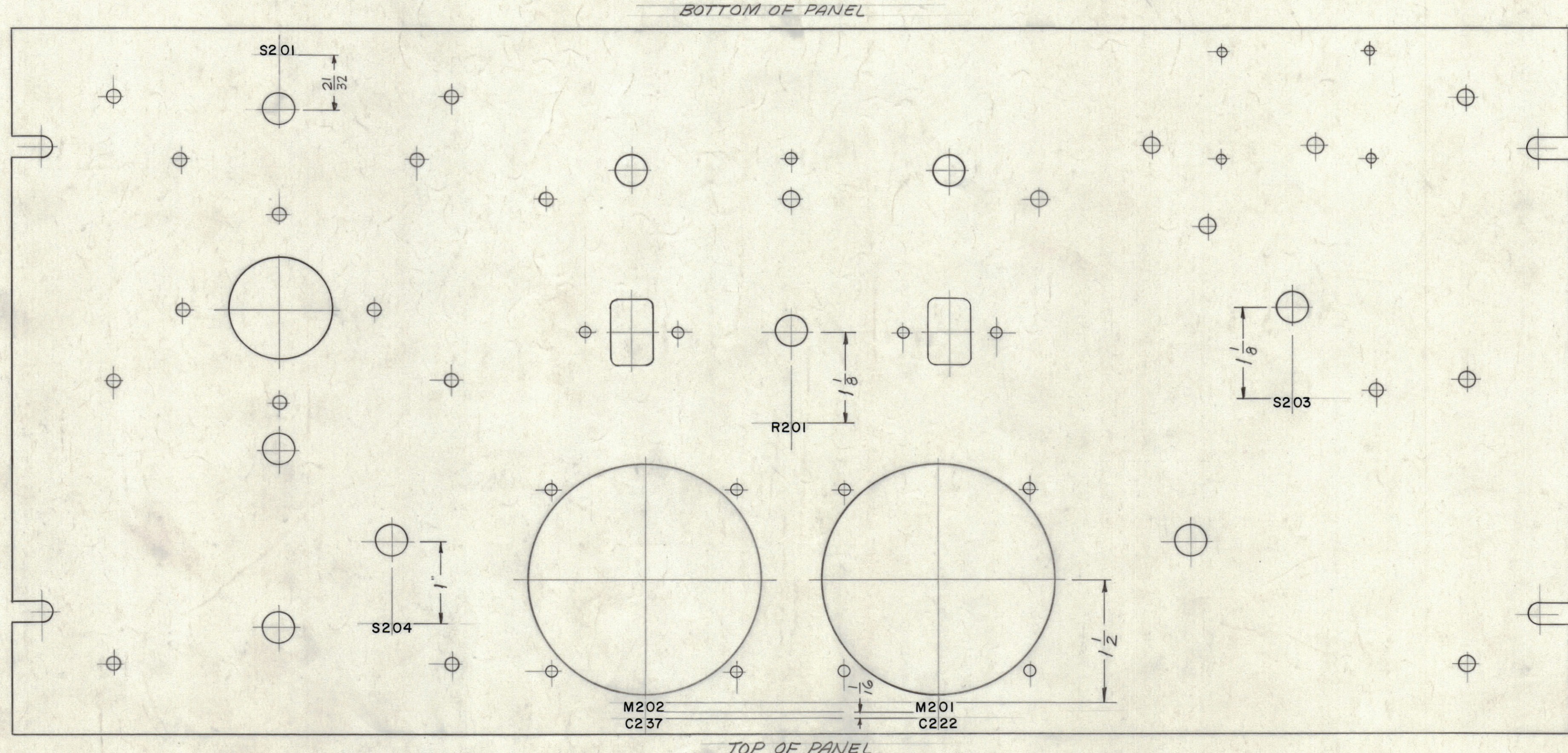
LETTER HEIGHT	DEPTH OF STROKE	WIDTH OF STROKE
5/64	.010-.012	.012-.015
3/32	.010	.015
1/8	.010	.020
DOTS	.010	—
ARROW HEADS	.010	—
SOLID LINES	.010	.015

B	2	LETTERING WAS 1/16 HIGH ON MULTI METER DETAIL	4/22/61	11284 A.M.	AK
A	1	SEE SHEET (C)	12/2/60	6043	AK
ISSUE	ITEM	CHANGED FROM	DATE	CH. NO.	DRAFTS
TOLERANCES			SCALE:		
ALL OTHERS	DEC. DIM. ±	FRAC. DIM. ±	ANGULAR DIM. ±	DRILL, PUNCH, COMMERCIAL STOCK SIZES AND MANUFACTURERS TOLERANCES ARE NOT INCLUDED.	

REF-TMC DWG NO. MS-2609					
REQ. UNIT	ITEM	PART NO.	DESCRIPTION	SYMBOL	
			THE TECHNICAL MATERIEL CORP. MAMARONECK, NEW YORK		
		STOCK SIZE	ENGRAVING, FRONT		
		MATERIAL	PANEL	REF-1A	
		WEIGHT PER PC	R. Uzzo	RK	
		TYPE & TEMPER	DRAWN	ELEC. DES. APP.	MECH. DES. APP.
		HEAT TREAT. SPEC.	CHECKED	FINAL APPROVAL	
		FINISH & SPEC. NO.	6-6-61	DATE	
		PROJECT NO.	6-6-61	DATE	
		MODEL	REF-1A	USED ON	
		ASSY. NO.			
		DATE	6-6-61		
				LD-947 B	

LD-947 B

NOTICE TO PERSONS RECEIVING THIS DRAWING
 THE TECHNICAL MATERIEL CORPORATION claims proprietary right in the material disclosed herein. This drawing is issued in confidence for engineering information only and may not be reproduced or used to manufacture anything shown hereon without permission from THE TECHNICAL MATERIEL CORPORATION to the user. This drawing is loaned for mutual assistance and is subject to recall at any time.
 Property of:
 THE TECHNICAL MATERIEL CORPORATION
 MAMARONECK, NEW YORK



LETTERING TO BE 1/8 HIGH GOTHIC, BLACK

LD-947 B

REF: MS-2609 (B)

B	SEE SHEET 1	42264	11284	A.M.	Q	RV	
A	SHEET 2 ADDED	12-8-61	6043	ab	SA	RV	
SYM	ZONE	DESCRIPTION	DATE	CH. NO.	DRAFTS	CHECKER	ENG. APP.
UNLESS OTHERWISE SPECIFIED:			SCALE				
DIMENSIONS ARE IN INCHES			MAXIMUM ALLOWABLE TOLERANCES HAVE BEEN DETERMINED AND ANY DEVIATIONS WILL BE CAUSE FOR REJECTION. REMOVE ALL BURRS & SHARP EDGES				
TOLERANCES ON FRACTIONS ± 1/64			DECIMALS ± .005		ANGLES ± 1/2°		

REQ. ITEM	PART NO.		DESCRIPTION		SYMBOL
THE TECHNICAL MATERIEL CORP. MAMARONECK, NEW YORK					
LETTERING, FRONT PANEL, REAR					
MATERIAL					
TYPE & TEMPER					
HEAT TREAT. SPEC.					
FINISH & SPEC. NO.					
DRAWN		CHECKED		FINAL APPROVAL	
ELEC. DES. APP.		MECH. DES. APP.		SHEET 2 OF 2	

1	RFD-1A			12-8-61
REQ. PER UNIT	MODEL	SECTION	ASS'Y. NO.	DATE
USED ON				