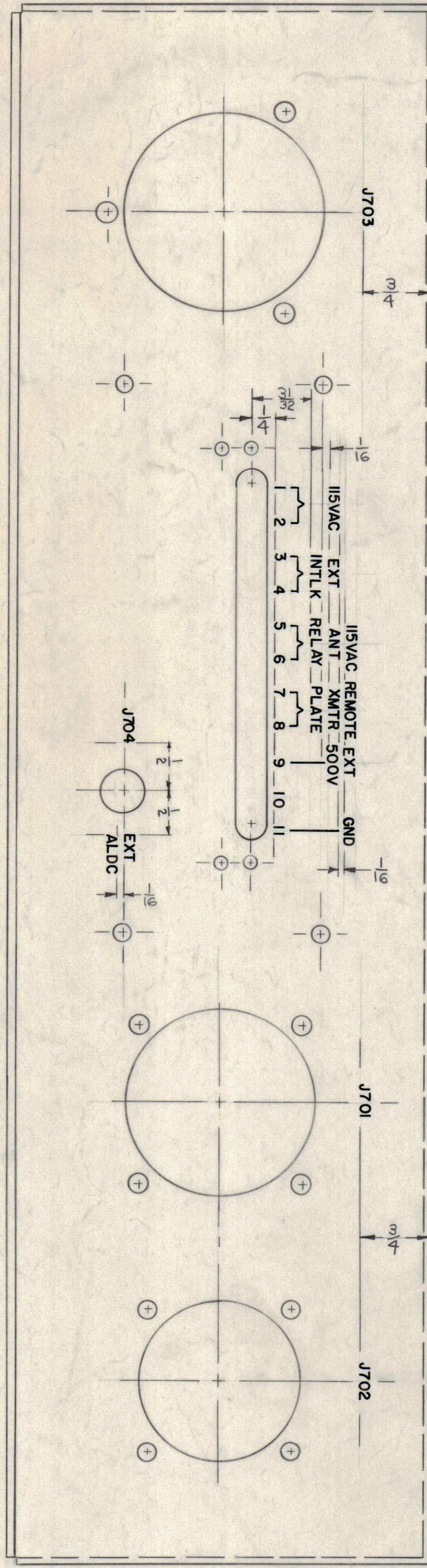
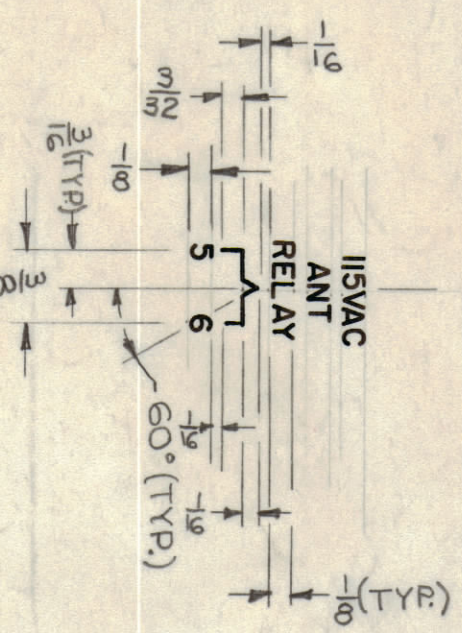
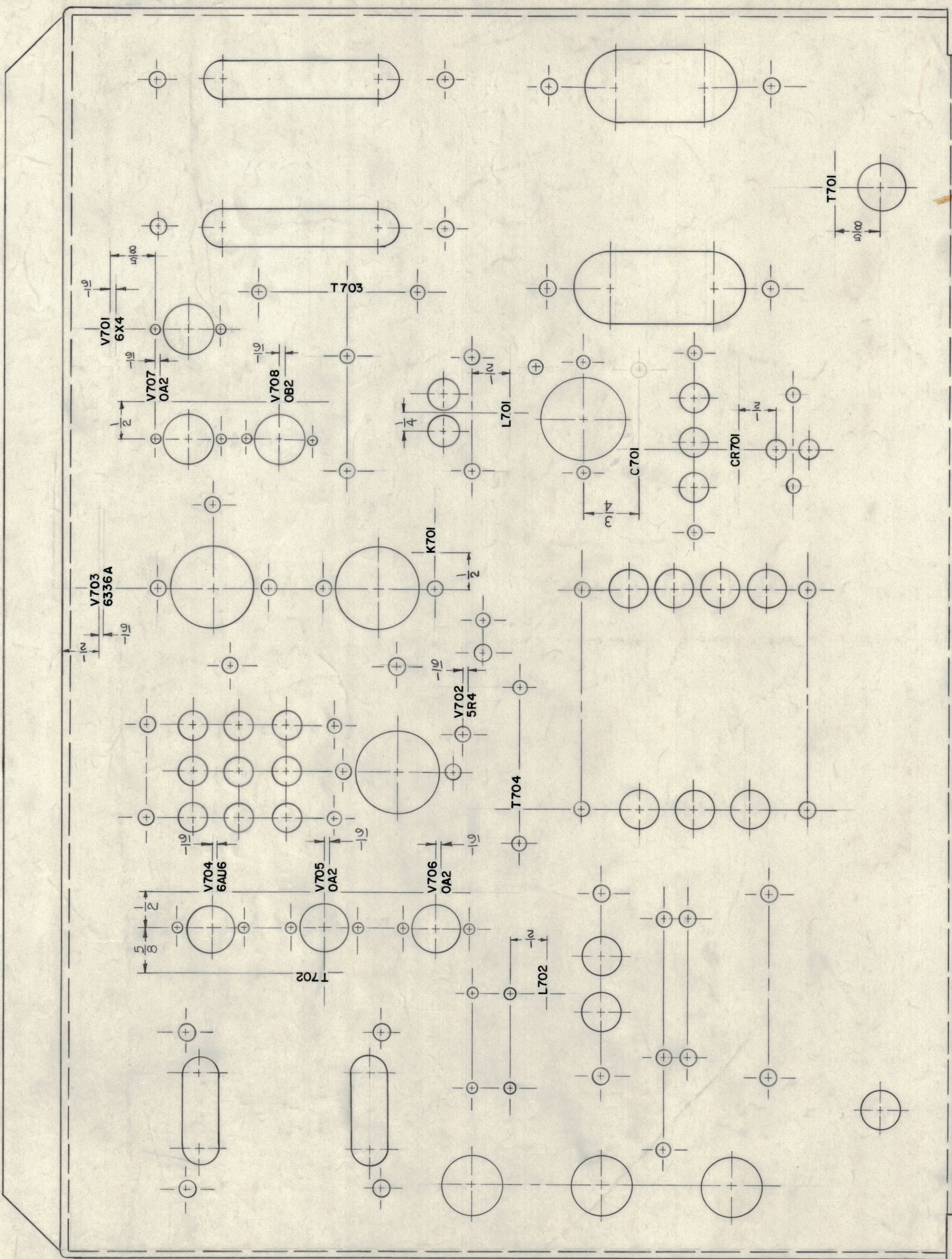


DETAIL 'A'
(TYR)



— OUTSIDE REAR —



— TOP —

LD-941 D

NOTICE TO PERSONS RECEIVING THIS DRAWING

THE TECHNICAL MATERIEL CORPORATION claims proprietary right in the material disclosed herein. This drawing is issued in confidence for engineering information only and may not be re-used or used to manufacture anything shown hereon without permission from THE TECHNICAL MATERIEL CORPORATION to the user. This drawing is loaned for mutual assistance and is subject to recall at any time.

Property of:
THE TECHNICAL MATERIEL CORPORATION
MAMARONECK, NEW YORK

REF: MS-2602

REV	DESCRIPTION	DATE	CH. NO.	DRAFTS	CHECKER	ENG. APP.
D	CHGD V706 FR 0B2 TO 0A2	11/5/66	17176	RME	PK	PK
C	3/4 Dim Added To C701, D Hole Relocated	11-18-61	6389	RU	PK	PK
B	SEE SHEET 1	11-16-61	5909	RU	PK	PK
A	SEE SHEET 1	9-8-61	5550	EA	WB	PK

UNLESS OTHERWISE SPECIFIED:
DIMENSIONS ARE IN INCHES
TOLERANCES ON FRACTIONS ± 1/64 DECIMALS ± .005 ANGLES ± 1/2°

SCALE
MAXIMUM ALLOWABLE TOLERANCES HAVE BEEN DETERMINED AND ANY DEVIATIONS WILL BE CAUSE FOR REJECTION. REMOVE ALL BURRS & SHARP EDGES

REQ. ITEM	PART NO.	DESCRIPTION	SYMBOL
THE TECHNICAL MATERIEL CORP. MAMARONECK, NEW YORK			
LETTERING, MAIN CHASSIS PS-4A			
MATERIAL			
DRWN	PK	CHECKED	PK
TYPE & TEMPER		HEAT TREAT. SPEC.	
FINISH & SPEC. NO.		ELEC. DES. APP. MECH. DES. APP.	
PS-4A		8-5-61	
MODEL		SECTION	
ASSY. NO.		DATE	
USED ON		SHEET 2 OF 2	