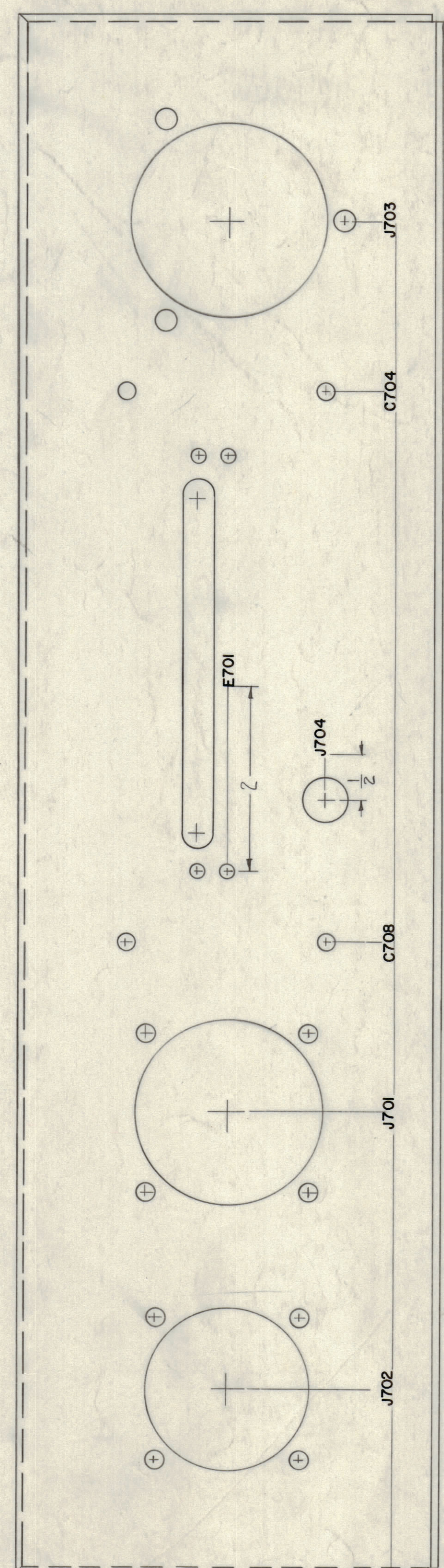


— BOTTOM —

17



— INSIDE REAR —

**NOTICE TO PERSONS RECEIVING THIS DRAWING**  
 THE TECHNICAL MATERIEL CORPORATION claims proprietary right in the material disclosed herein. This drawing is issued in confidence for an intended information only and may not be reproduced or used to manufacture anything shown hereon without permission from THE TECHNICAL MATERIEL CORPORATION to the user. This drawing is loaned for mutual assistance and is subject to recall at any time.

Property of:  
 THE TECHNICAL MATERIEL CORPORATION  
 MAMARONECK, NEW YORK

REF: MS-2602 (Roll)

REV	DESCRIPTION	DATE	CH. NO.	DRAFTS	CHECKER	ENG. APP.
D	SEE SHEET 2 OF 2	11/3/66	17176	RME	SKP	QMS
C	M HOLE RELOCATED (TOP LEFT) FRONT VIEW	12-19-61	6059	FA	SKP	QMS
B	C702 Relocated	11-16-61	5509	ELL	RK	QMS
A	C704 WAS J704	9-8-61	5550	ELL	AK	QMS

UNLESS OTHERWISE SPECIFIED:  
 DIMENSIONS ARE IN INCHES  
 TOLERANCES ON  
 FRACTIONS ± 1/64    DECIMALS ± .005    ANGLES ± 1/2°

SCALE  
 MAXIMUM ALLOWABLE TOLERANCES HAVE BEEN DETERMINED AND ANY DEVIATIONS WILL BE CAUSE FOR REJECTION.  
 REMOVE ALL BURRS & SHARP EDGES

REQ. PER UNIT	MODEL	SECTION	ASBY. NO.	DATE
	PS-4A			8-4-61

REQ. ITEM	PART NO.	DESCRIPTION	SYMBOL
THE TECHNICAL MATERIEL CORP. MAMARONECK, NEW YORK			
LETTERING, MAIN CHASSIS PS-4A			
MATERIAL		DRAWN: RLZ70    905    Ron Kish	
TYPE & TEMPER		HEAT TREAT. SPEC.	
FINISH & SPEC. NO.		ELEC. DES. APP.    MECH. DES. APP.    SHEET 1 OF 2	

LD-941 D