

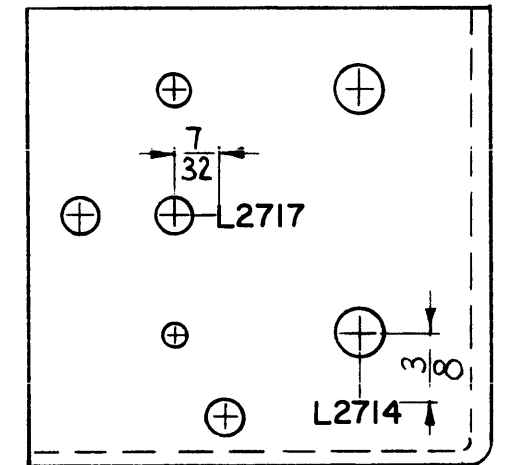
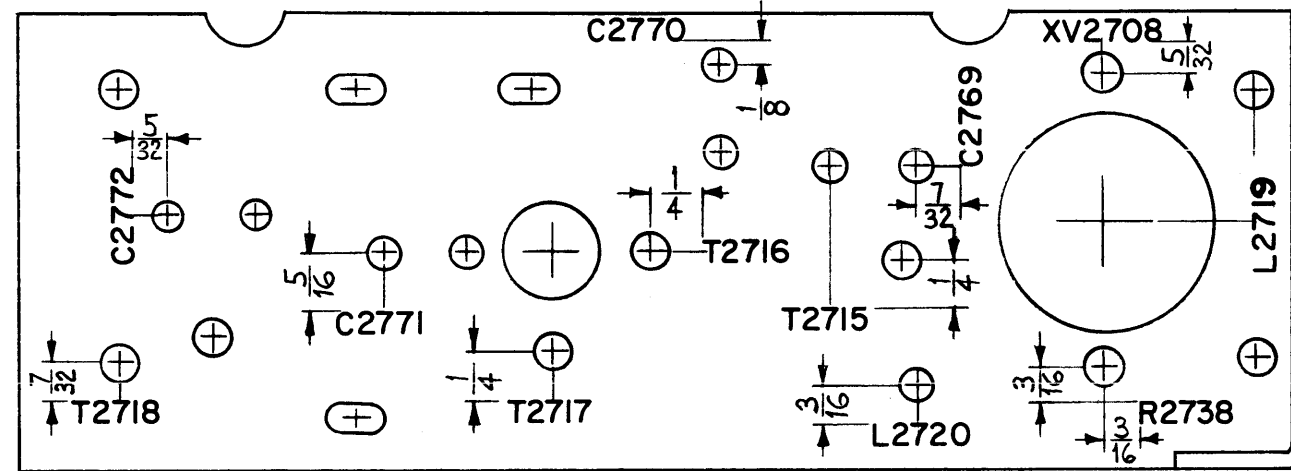
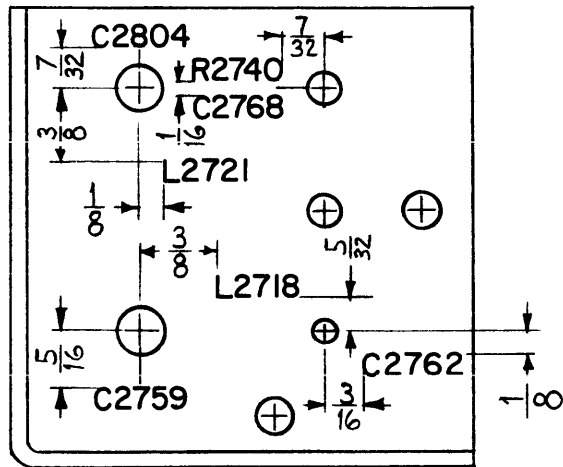
LD-937 B

NOTICE TO PERSONS RECEIVING THIS DRAWING

THE TECHNICAL MATERIEL CORPORATION claims proprietary right in the material disclosed hereon. This drawing is issued in confidence for engineering information only and may not be reproduced or used to manufacture anything shown hereon without permission from THE TECHNICAL MATERIEL CORPORATION to the user. This drawing is loaned for mutual assistance and is subject to recall at any time.

Property of:

THE TECHNICAL MATERIEL CORPORATION
MAMARONECK, NEW YORK



MARKING PROCESS: AS PER TMC SPEC. S-727
ALL LETTERING TO BE 1/8 HIGH BLACK GOTHIC.

SYM	DESCRIPTION	DATE	CH. NO.	DRAFTS	CHECKER	ENG. APP.
B	L2719 WAS L2721 (ONE PLACE)	12-5-62	7763	GS	[Signature]	[Signature]
A	L2719 DELETED (Left side view)	8-18-61	5452	E.L.	[Signature]	[Signature]

UNLESS OTHERWISE SPECIFIED:
DIMENSIONS ARE IN INCHES
TOLERANCES ON FRACTIONS ± 1/64 DECIMALS ± .005 ANGLES ± 1/2°

SCALE: FULL (DO NOT SCALE)
MAXIMUM ALLOWABLE TOLERANCES HAVE BEEN DETERMINED AND ANY DEVIATIONS WILL BE CAUSE FOR REJECTION.
REMOVE ALL BURRS AND SHARP EDGES

1	CHG-2	MF/RF	6-5-61
REQ. PER UNIT	MODEL	SECTION	ASS'Y. NO. DATE
	USED ON		

REF: MS-2394(2)

REQ. ITEM	PART NO.	DESCRIPTION	SYMBOL
		THE TECHNICAL MATERIEL CORP. MAMARONECK, NEW YORK	
STOCK SIZE		LETTERING, #1 CHASSIS	
MATERIAL			
TYPE & TEMPER	HEAT TREAT. SPEC.	DRAWN	CHECKER
		[Signature]	[Signature]
FINISH & SPEC. NO.		ELEC. DES. APP.	MECH. DES. APP.
		[Signature]	[Signature]
LD-937			B