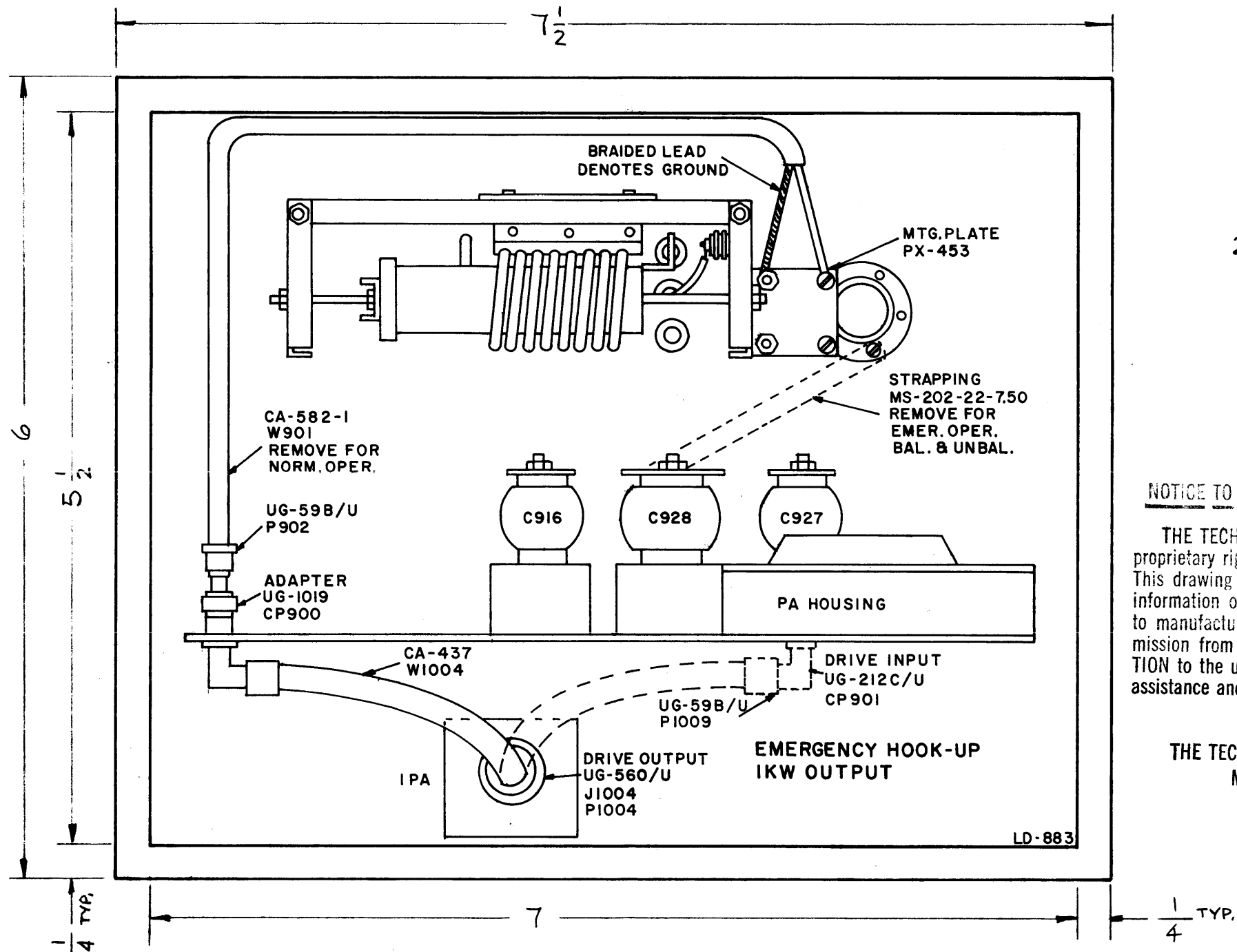


LD-883 B



NOTES -
 1- ALL LETTERING & LINE WORK TO BE BLACK ON A WHITE BACKGROUND.
 2- TO BE SUPPLIED WITH ADHESIVE BACKING.

NOTE:
 PRINTED DIRECTLY ON FACE OF PLASTIC.

NOTICE TO PERSONS RECEIVING THIS DRAWING

THE TECHNICAL MATERIEL CORPORATION claims proprietary right in the material disclosed hereon. This drawing is issued in confidence for engineering information only and may not be reproduced or used to manufacture anything shown hereon without permission from THE TECHNICAL MATERIEL CORPORATION to the user. This drawing is loaned for mutual assistance and is subject to recall at any time.

Property of:
 THE TECHNICAL MATERIEL CORPORATION
 MAMARONECK, NEW YORK

SYM	DESCRIPTION	DATE	CH. NO.	DRAFTS	CHECKER	ENG. APP.
B	FINISH & NOTE ADDED MATERIAL WAS VINYL PLASTIC LAMINATED	7-18-62	6925	AF	RB	RB
A	REVISED & REDRAWN	11-17-61	5778	AR	RB	RB

UNLESS OTHERWISE SPECIFIED:
 DIMENSIONS ARE IN INCHES
 TOLERANCES ON FRACTIONS ± 1/64 DECIMALS ± .005 ANGLES ± 1/2°

SCALE:
 MAXIMUM ALLOWABLE TOLERANCES HAVE BEEN DETERMINED AND ANY DEVIATIONS WILL BE CAUSE FOR REJECTION.
 REMOVE ALL BURRS AND SHARP EDGES

REQ. PER UNIT	MODEL	SECTION	ASSY. NO.	DATE
1	GPT-10K			11-17-61

REQ. ITEM	PART NO.	DESCRIPTION	SYMBOL
	.015 THICK	THE TECHNICAL MATERIEL CORP. MAMARONECK, NEW YORK	
	STOCK SIZE		
	WHITE OPAQUE VINYL PLASTIC MATERIAL	DIAGRAM, EMER. HOOK-UP FOR 1KW OUTPUT	
		AR RUZZO	DR
		DRAWN	CHECKER
		FINAL APPROVAL	
		AR RB	AR RB
		ELEC. DES. APP.	MECH. DES. APP.
		LD-883	B