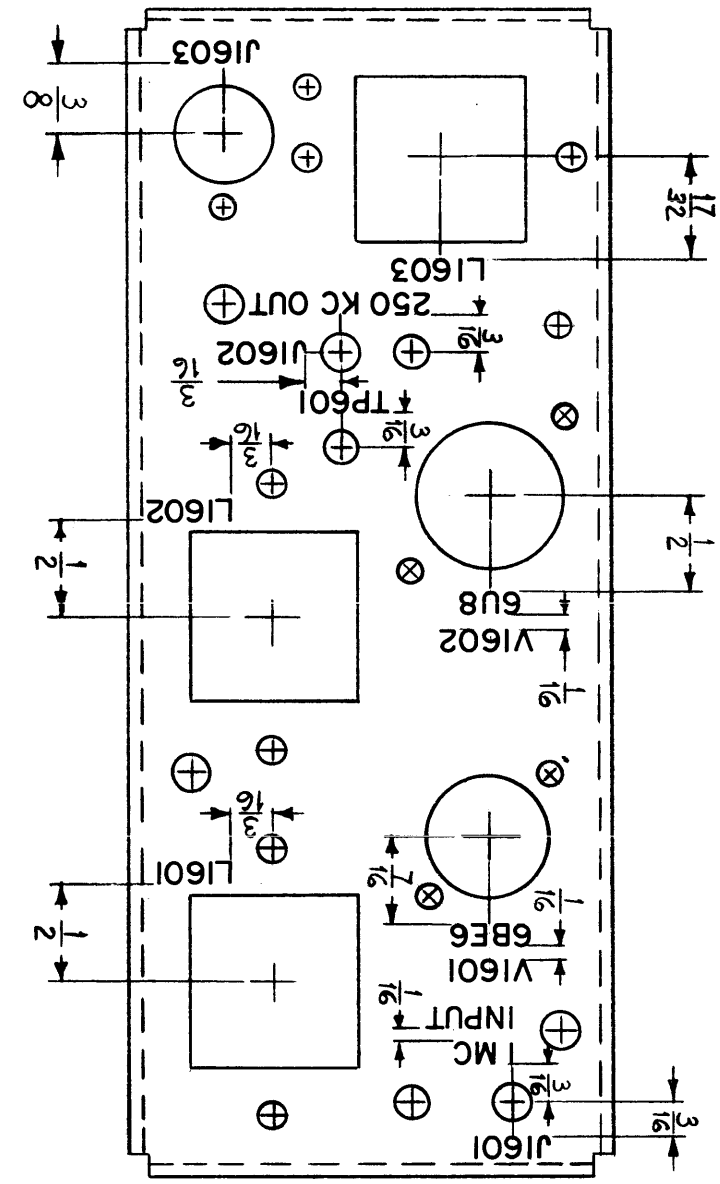
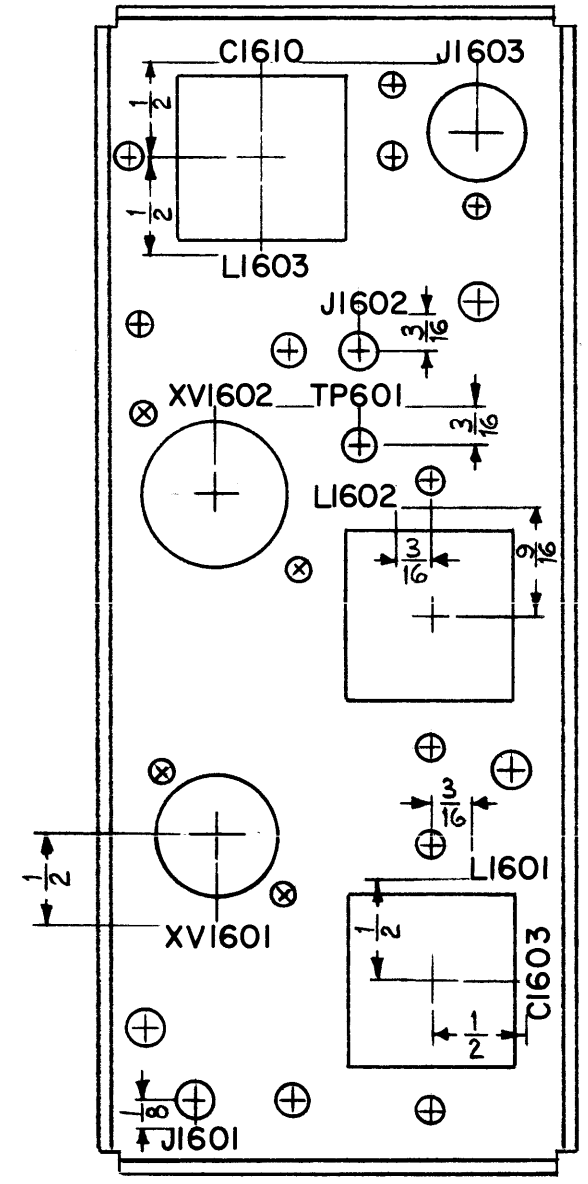
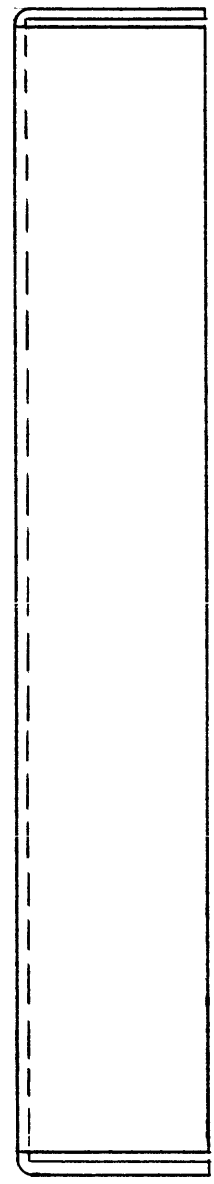


LD-865 C



TOP VIEW



BOTTOM VIEW

ALL LETTERING TO BE 1/8 HIGH BLACK GOTHIC.

THE TECHNICAL MATERIEL CORPORATION claims copyright in the drawings disclosed herein. No part of this drawing is to be reproduced or used in any manner without the written permission of THE TECHNICAL MATERIEL CORPORATION. The user of this drawing is granted for mutual assistance and a service to result at any time.

Property of
 THE TECHNICAL MATERIEL CORPORATION
 MAMARONECK, NEW YORK

REF: MS-2375 (2).

C	1	COMPLETELY REVISED & REDRAWN	4-26-61	4719	MAG	JCB	
ISSUE	ITEM	CHANGED FROM	DATE	CH. NO.	DRAFTS	CHECKER	ENG. APP.
TOLERANCES			SCALE:				
DEC. DIM. ±			MAXIMUM ALLOWABLE TOLERANCES HAVE BEEN DETERMINED AND ANY DEVIATIONS WILL BE CAUSE FOR REJECTION.				
FRAC. DIM. ±			REMOVE ALL BURRS AND SHARP EDGES				
ANGULAR DIM. ±							

1	CHG-1			4-26-61
REQ. PER UNIT	MODEL	PROJECT NO.	ASS'Y. NO.	DATE
USED ON				

REQ. ITEM	PART NO.	DESCRIPTION	SYMBOL
THE TECHNICAL MATERIEL CORP. MAMARONECK, NEW YORK			
STOCK SIZE			
LETTERING, CHASSIS DIVIDER			
MATERIAL			
		MAG	JCB
TYPE & TEMPER	HEAT TREAT. SPEC.	DRAWN	CHECKED
FINISH & SPEC. NO.		FINAL APPROVAL	
		LD-865 C	