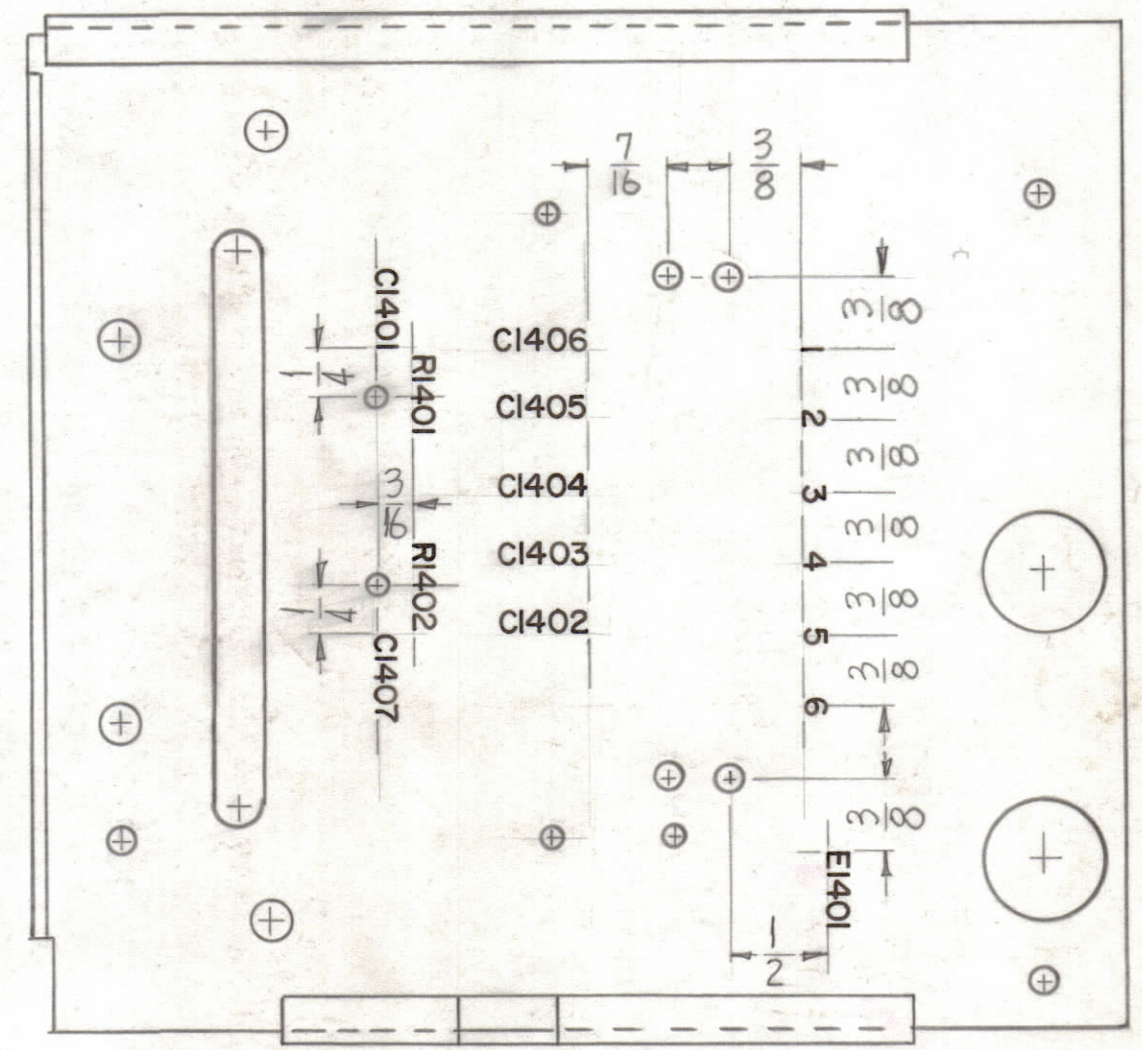
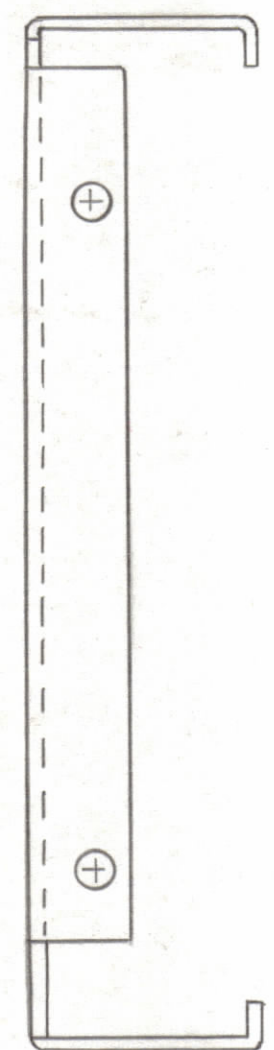
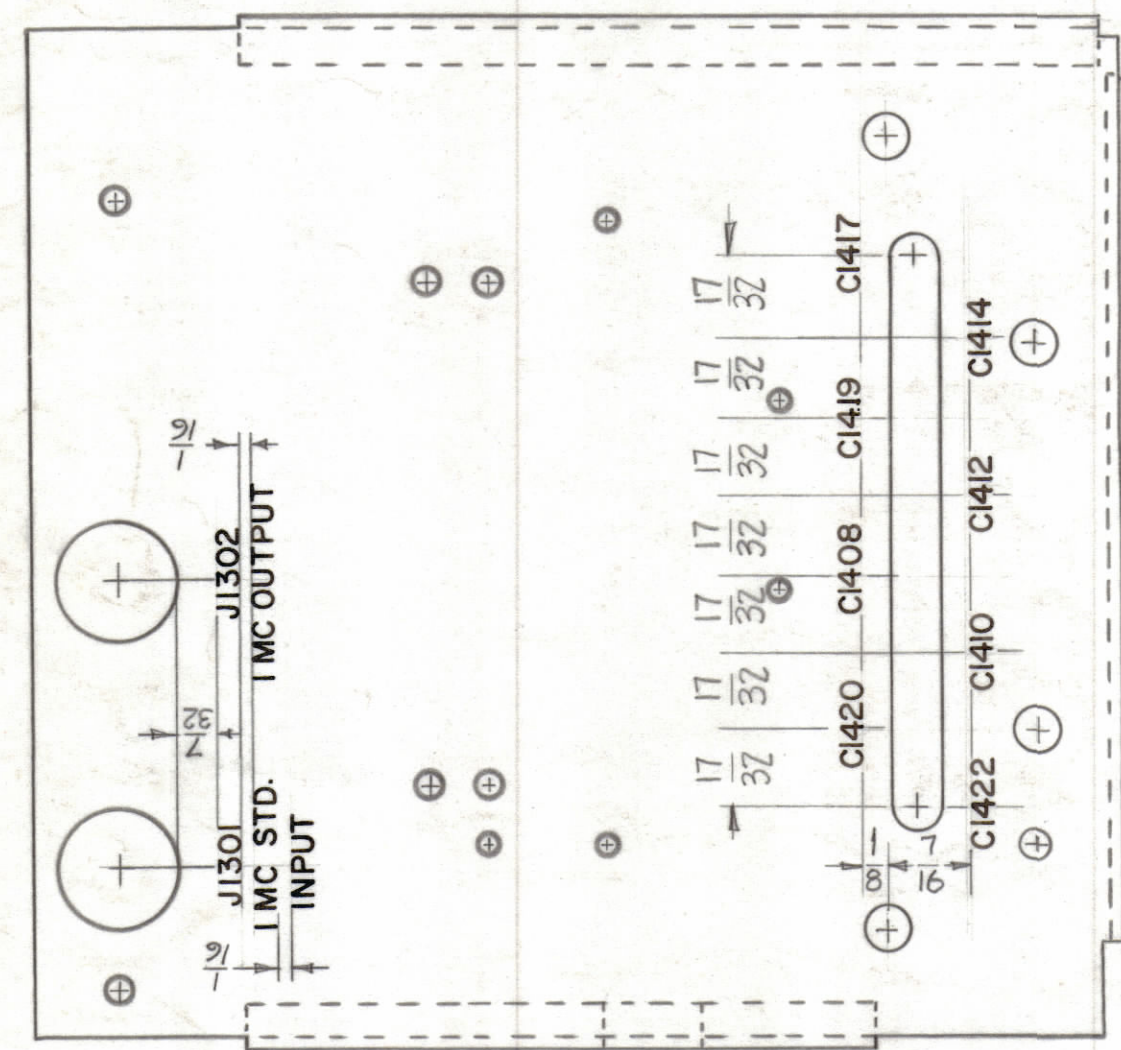


NOTICE TO PERSONS RECEIVING THIS DRAWING

THE TECHNICAL MATERIEL CORPORATION claims proprietary right in the material disclosed hereon. This drawing is issued in confidence for engineering information only and may not be reproduced or used to manufacture anything shown hereon without permission from THE TECHNICAL MATERIEL CORPORATION to the user. This drawing is loaned for mutual assistance and is subject to recall at any time.

Property of:  
THE TECHNICAL MATERIEL CORPORATION  
MAMARONECK, NEW YORK



NOTE ~ ALL LETTER  $\frac{1}{8}$  HIGH BLACK GOTHIC.

REF-TMC DWG NO. MS-2414

SYM	ZONE	DESCRIPTION	DATE	CH. NO.	DRAFTS	CHECKER	ENG. APP.
A		J1301 & J1302 ADDED TO TOP VIEW	11-30-60	3620	WAS		

UNLESS OTHERWISE SPECIFIED:  
DIMENSIONS ARE IN INCHES  
TOLERANCES ON  
FRACTIONS  $\pm 1/64$     DECIMALS  $\pm .005$     ANGLES  $\pm 1/2^\circ$

SCALE  
MAXIMUM ALLOWABLE TOLERANCES HAVE BEEN DETERMINED AND ANY DEVIATIONS WILL BE CAUSE FOR REJECTION.  
REMOVE ALL BURRS & SHARP EDGES

1	CHG-1			11-22-60
REQ. PER UNIT	MODEL	SECTION	ASS'Y. NO.	DATE

REQ. ITEM	PART NO.	DESCRIPTION	SYMBOL
		THE TECHNICAL MATERIEL CORP. MAMARONECK, NEW YORK	
		LETTERING, REAR COVER, OUTER SHELL	
		DRAWN: <i>[Signature]</i> CHECKED: <i>[Signature]</i> FINAL APPROVAL: <i>[Signature]</i>	
		LD-863	A
		ELEC. DES. APP.    MECH. DES. APP.    SHEET OF	