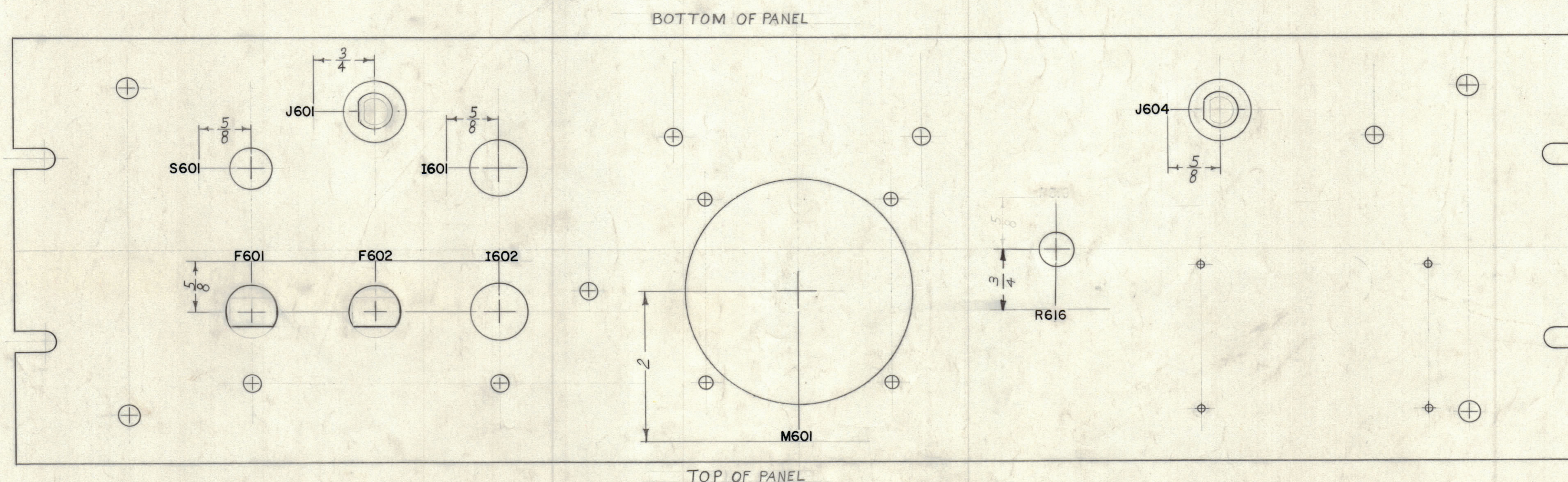


NOTICE TO PERSONS RECEIVING THIS DRAWING

THE TECHNICAL MATERIEL CORPORATION claims proprietary right in the material disclosed hereon. This drawing is issued in confidence for engineering information only and may not be reproduced or used to manufacture anything shown hereon without permission from THE TECHNICAL MATERIEL CORPORATION to the user. This drawing is loaned for mutual assistance and is subject to recall at any time.

Property of:
THE TECHNICAL MATERIEL CORPORATION
MAMARONECK, NEW YORK



LETTERING TO BE 1/8 HIGH BLACK GOTHIC.

OBSELETE

USE LD-722 SHEET 2
3-6-62 *LB*

LD 722 (3) - ENGRAVING
REF: MS-2185 (8) - FRONT PANEL

| REQ. ITEM | PART NO. | DESCRIPTION | SYMBOL |
|--|----------|-------------|--------|
| THE TECHNICAL MATERIEL CORP. MAMARONECK, NEW YORK | | | |
| LETTERING, REAR OF FRONT PANEL | | | |
| MATERIAL | | | |
| TYPE & TEMPER | | | |
| HEAT TREAT. SPEC. | | | |
| FINISH & SPEC. NO. | | | |

| REQ. PER UNIT | MODEL | SECTION | ASBY. NO. | DATE |
|---------------|--------|---------|-----------|---------|
| 1 | CSS-1A | | | 1-30-62 |
| 1 | CSS-1 | | | 9-8-60 |

| ISSUE NO. | DESCRIPTION | DATE | CH. NO. | DRAFTS | CHECKER | ENG. APP. |
|-----------|---|---------|---------|--------|---------|-----------|
| C | OBSELETE, NOTE ADDED | 3-6-62 | 6429 | J.L. | | |
| B | R616 RELOCATED FROM 5/8 DIM. | 2-2-62 | 6290 | G.S. | | |
| A | REVISED TO CONFORM WITH FRONT PANEL MACH. MS-2185 | 10-2-61 | 5653 | H.R. | | |

FORM-111

LD-775