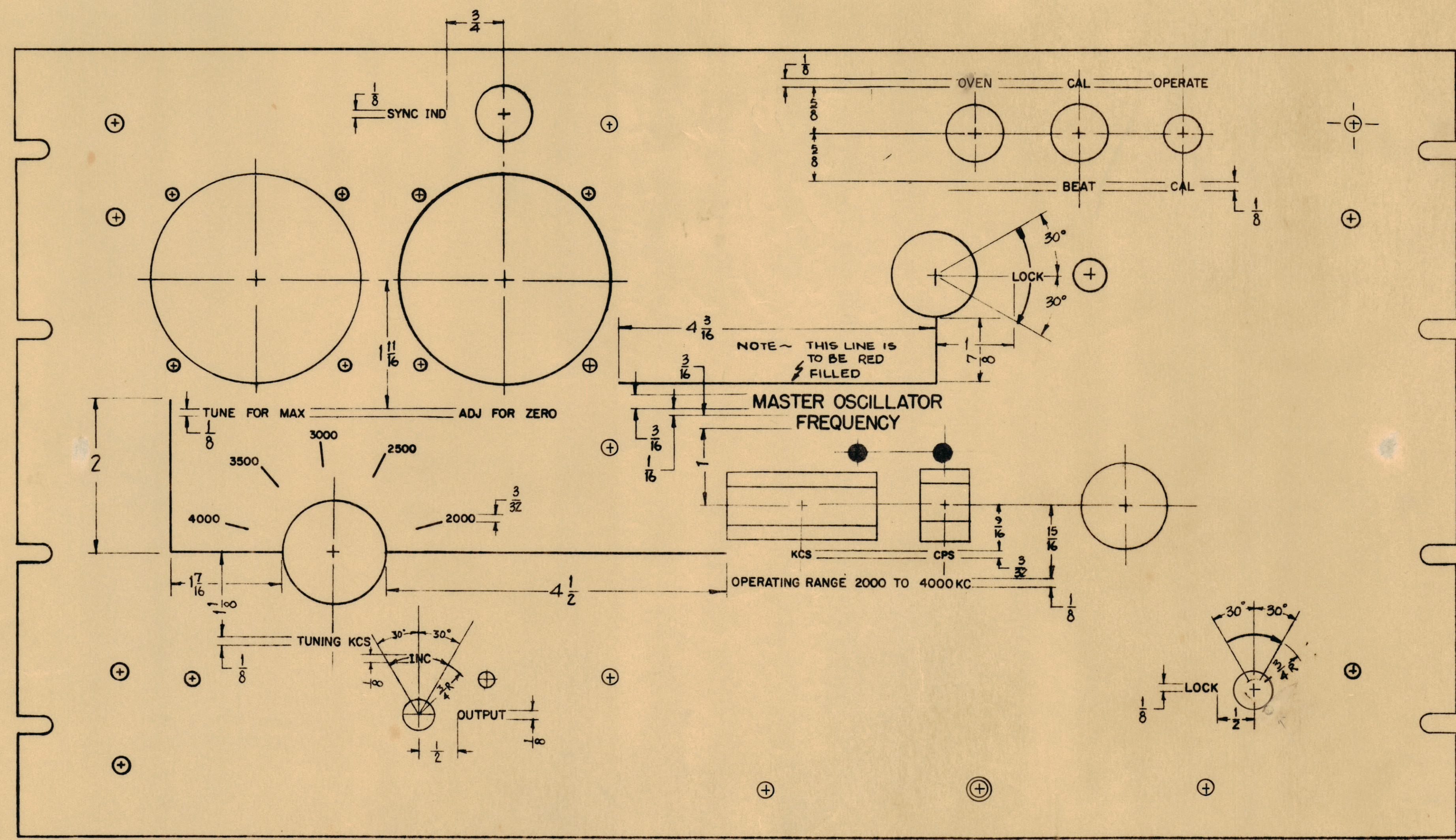
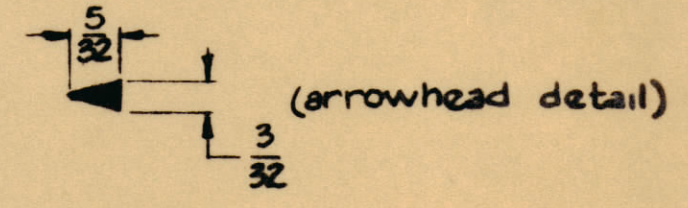


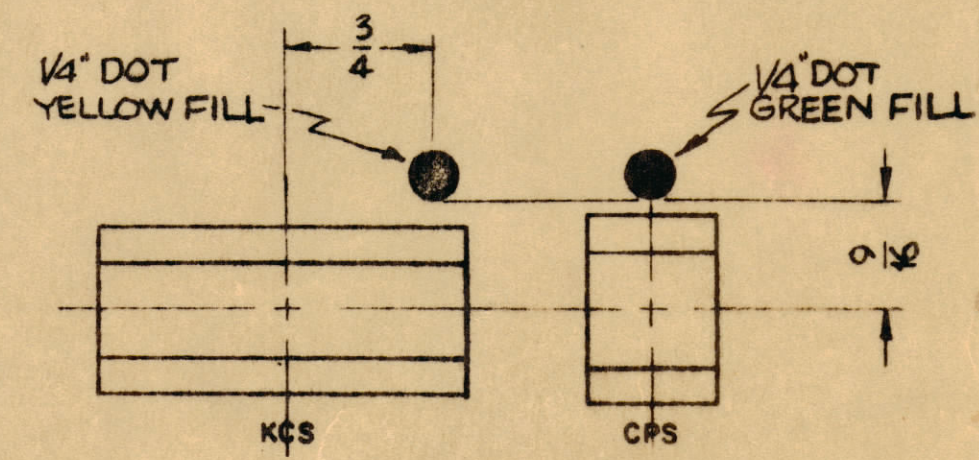
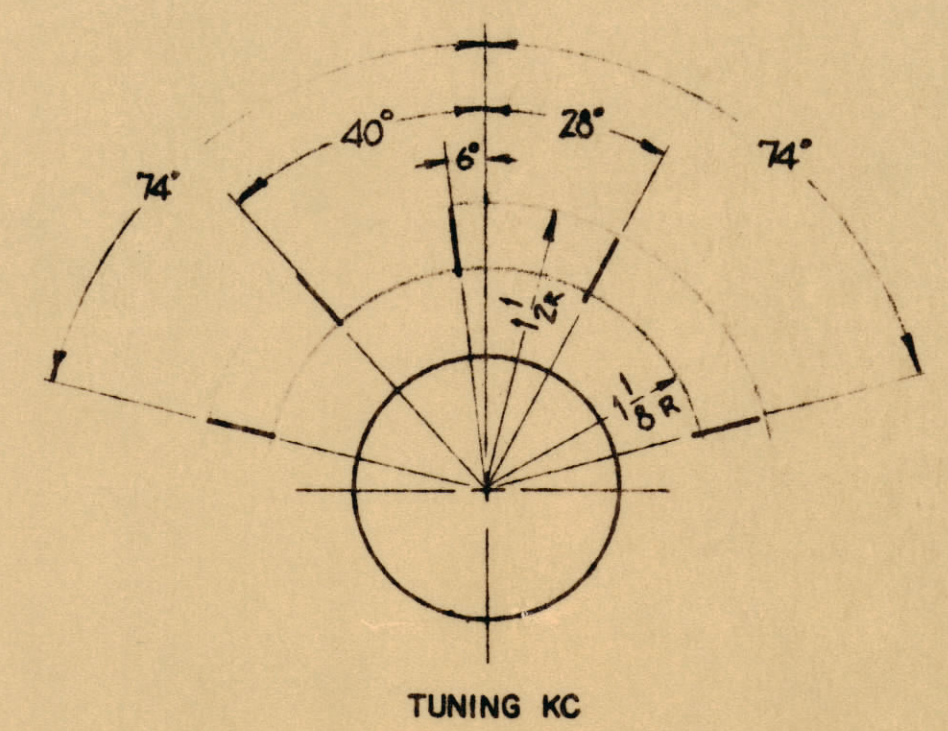
NOTICE TO PERSONS RECEIVING THIS DRAWING
 THE TECHNICAL MATERIEL CORPORATION claims proprietary right in the material disclosed herein. This drawing is issued in confidence and is to be used for information only and may not be re-used or used to manufacture anything shown herein without permission from THE TECHNICAL MATERIEL CORPORATION to the user. This drawing is loaned for mutual assistance and is subject to recall at any time.
 Property of:
 THE TECHNICAL MATERIEL CORPORATION
 MAMARONECK, NEW YORK



- UNLESS OTHERWISE SPECIFIED
- 1~ ALL LINES TO BE WHITE FILLED EXCEPT WHERE OTHERWISE SPECIFIED
 - 2~ ALL LETTERING GROUPS TO BE CENTERED ON HOLES
 - 3~ ENGRAVING TO BE GOTHIC WHITE FILLED SIZES SHOWN ON CHART.
 - 4~ ALL ARROWHEADS TO BE WHITE FILLED



HEIGHT OF LETTER	DEPTH OF STROKE	WIDTH OF STROKE
1/8	.010	.020
3/32	.010	.015
3/16	.010	.025
DOTS	.010	1/4" DIA
LINES	.010	.015
ARROWHEADS	.010	—



REV	DATE	DESCRIPTION	CH. NO.	BY	CHECKER	ENG. APP.
A	6-29-60	(2) HOLES ADDED	51A9	G.D.L.		

TOLERANCES
 DEC. DIM. ±
 FRAC. DIM. ±
 ANGULAR DIM. ±

MAXIMUM ALLOWABLE TOLERANCES HAVE BEEN DETERMINED AND ANY DEVIATIONS WILL BE CAUSE FOR REJECTION.
 REMOVE ALL BURRS AND SHARP EDGES

REF-MS-

REQ. ITEM	PART NO.	DESCRIPTION	SYMBOL
STOCK SIZE		THE TECHNICAL MATERIEL CORP. MAMARONECK, NEW YORK	
MATERIAL		ENGRAVING, FRONT PANEL	
TYPE & TEMPER		CMO-2	
HEAT TREAT. SPEC.			
FINISH & SPEC. NO.			

REQ. PER UNIT	MODEL	REVISION	ASST. NO.	DATE
1	CMO-2			8-8-60

LD-766 A