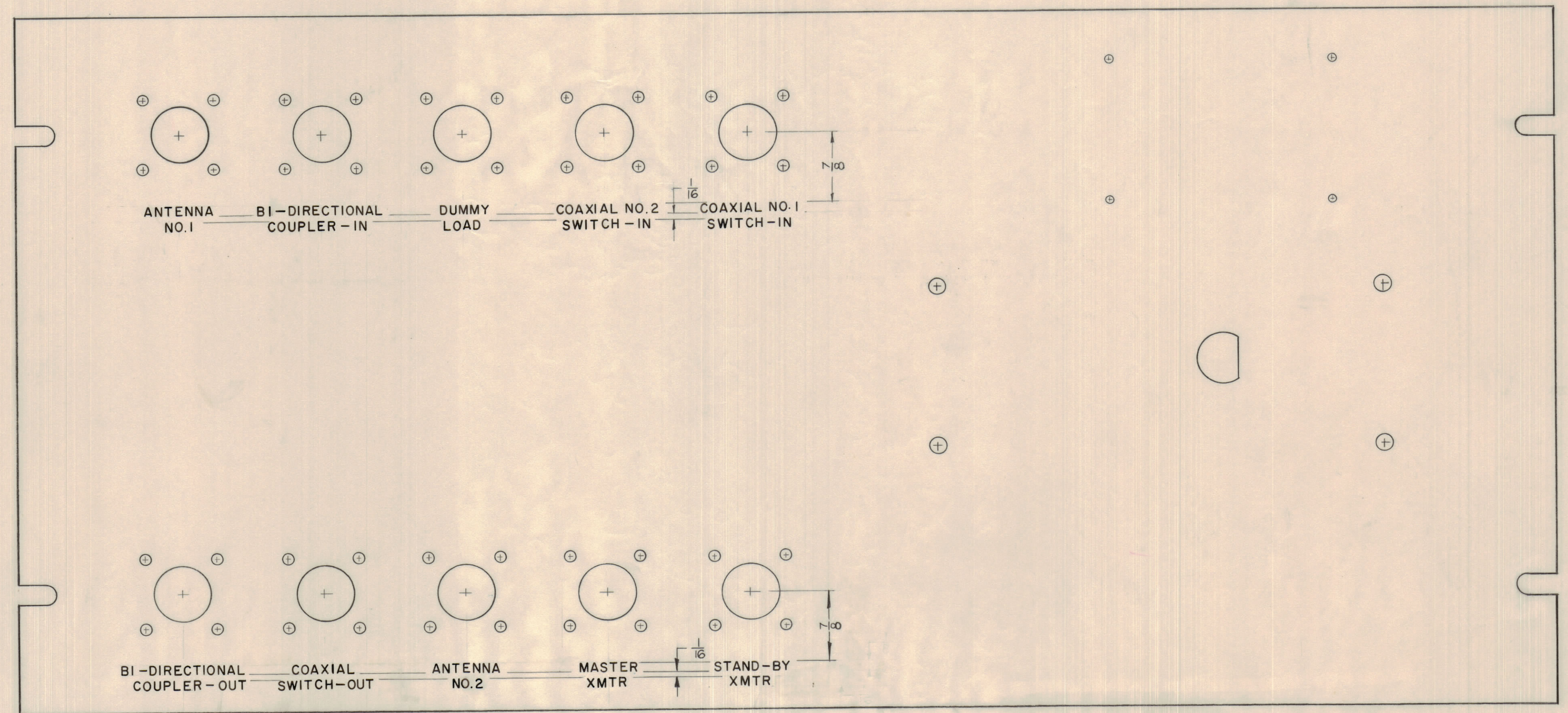


**NOTICE TO PERSONS RECEIVING THIS DRAWING**  
 THE TECHNICAL MATERIEL CORPORATION claims proprietary right in the material disclosed hereon. This drawing is issued in confidence for engineering information only and may not be reproduced or used to manufacture any thing shown hereon without permission from THE TECHNICAL MATERIEL CORPORATION to the user. This drawing is loaned for mutual assistance and is subject to recall at any time.  
 Property of:  
 THE TECHNICAL MATERIEL CORPORATION  
 MAMARONECK, NEW YORK



**NOTE:**  
 ALL LETTERING 1/8 HIGH WHITE FILLED GOTHIC (SEE CHART)  
 ALL LETTER GROUPS TO BE CENTERED ON HOLES.

REF: MS-2110

ISSUE	ZONE	DESCRIPTION	DATE	CH. NO.	DRAFTS	CHECKER	ENG. APP.
TOLERANCES			SCALE:				
DEC. DIM. ±			MAXIMUM ALLOWABLE TOLERANCES HAVE BEEN DETERMINED AND ANY DEVIATIONS WILL BE CAUSE FOR REJECTION.				
FRAC. DIM. ±			REMOVE ALL BURRS AND SHARP EDGES				
ANGULAR DIM. ±							

ENGRAVING		
LETTERING HIGH	DEPTH OF CUT	WIDTH OF CUT
1/8	.010	.025

REQ PER UNIT	MODEL	SECTION	ASSY. NO.	DATE
	QDP-6SP10			3/14/60
USED ON				

REQ. ITEM	PART NO.	DESCRIPTION	SYMBOL
	3/16 THK.	THE TECHNICAL MATERIEL CORP.	
	STOCK SIZE	MAMARONECK, NEW YORK	
	ALUMINUM	ENGRAVING, FRONT PANEL	
	MATERIAL	QDS TO N CONNECTOR	
	2024 T3		
	TYPE & TEMPER		
		DRAWN	ELEC. DES. APP.
		CHECKED	MECH. DES. APP.
		HEAT TREAT. SPEC.	FINAL APPROVAL
		SEE NOTE	LD-712
		FINISH & SPEC. NO.	