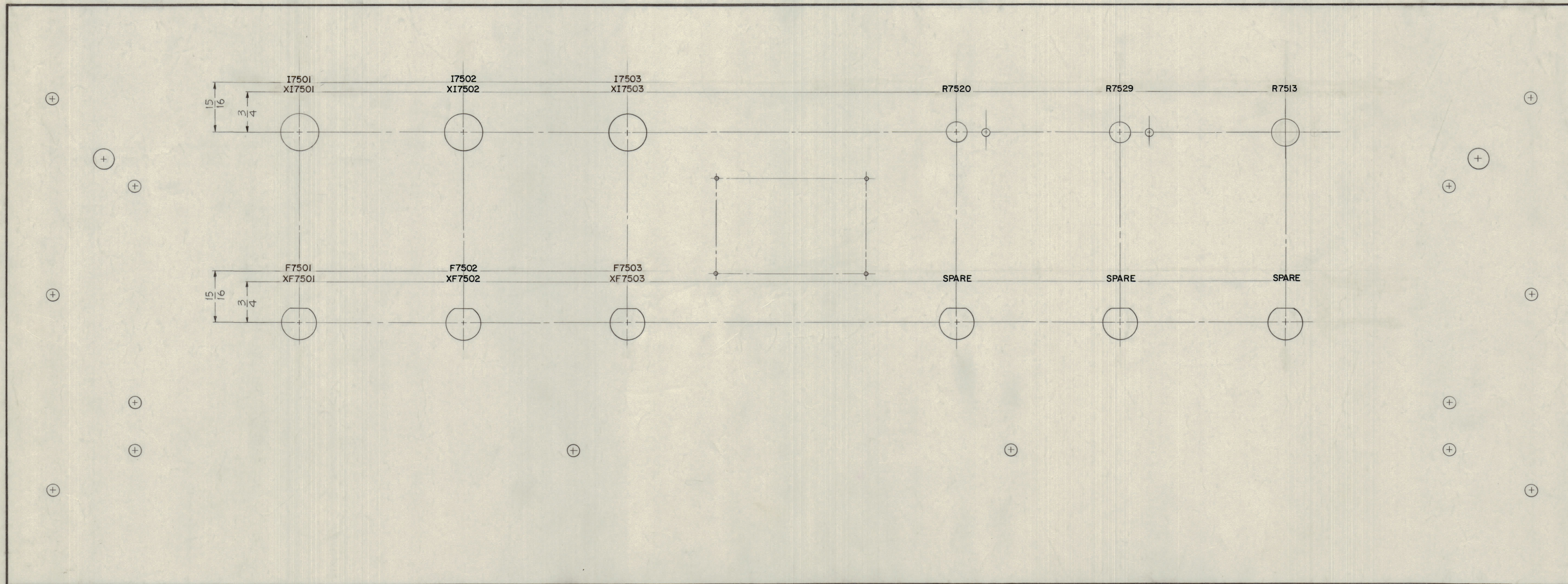


IF IT IS FOUND DESIRABLE TO CHANGE ANY TOLERANCE OR OTHER DETAIL SPECIFIED ON THIS DRAWING NOTIFY THE PURCHASER PROMPTLY.  
 MAXIMUM ALLOWABLE TOLERANCES HAVE BEEN DETERMINED AND DEVIATIONS WILL BE CAUSE FOR REJECTION. REMOVE ALL BURRS AND SHARP EDGES

NOTICE TO PERSONS RECEIVING THIS DRAWING  
 THE TECHNICAL MATERIEL CORPORATION claims proprietary right in the material disclosed hereon. This drawing is issued in confidence for engineering information only and may not be reproduced or used to manufacture anything shown hereon without permission from THE TECHNICAL MATERIEL CORPORATION to the user. This drawing is loaned for mutual assistance and is subject to recall at any time.  
 Property of:  
 THE TECHNICAL MATERIEL CORPORATION  
 MAMARONECK, NEW YORK

TOP OF PANEL



REAR VIEW OF PANEL SHOWN

MARKING PROCESS: AS PER TMC SPEC. S-727  
 NOTE - ALL LETTERING 1/8 HIGH BLACK GOTHIC.

B	1	LETTERING CLARIFIED	8-25-62	6926	G.B.		
A	1	CHANGED TO AGREE WITH MS-1961	5-23-60	2315			
ISSUE	ITEM	CHANGED FROM	DATE	CN. NO.	DRAFTS	CHECKER	ENG. APP.
TOLERANCES		SCALE: FULL (DO NOT SCALE)					
ALL OTHERS	DEC. DIM. ± FRAC. DIM. ± ANGULAR DIM. ±	DRILL PUNCH COMMERCIAL STOCK SIZES AND MANUFACTURERS TOLERANCES ARE NOT INCLUDED.					

REF-  
 MS-1961 (PANEL, FRONT)  
 LD-678 (ENGRAVING, FRONT PANEL)

REQ. ITEM	PART NO.	DESCRIPTION	SYMBOL
		THE TECHNICAL MATERIEL CORP. MAMARONECK, NEW YORK	
		LETTERING, FRONT PANEL, REAR	
		John C. Biele	em
		DRAWN	ELEC. DES. APP.
		HEAT TREAT. SPEC.	MECH. DES. APP.
		CHECKED	FINAL APPROVAL
			LD-679B

1	AP-104	GPT 40K		1-21-60
REQ PER UNIT	MODEL	PROJECT NO.	ASSY. NO.	DATE
				USED ON
				FINISH & SPEC. NO.

LD-679B