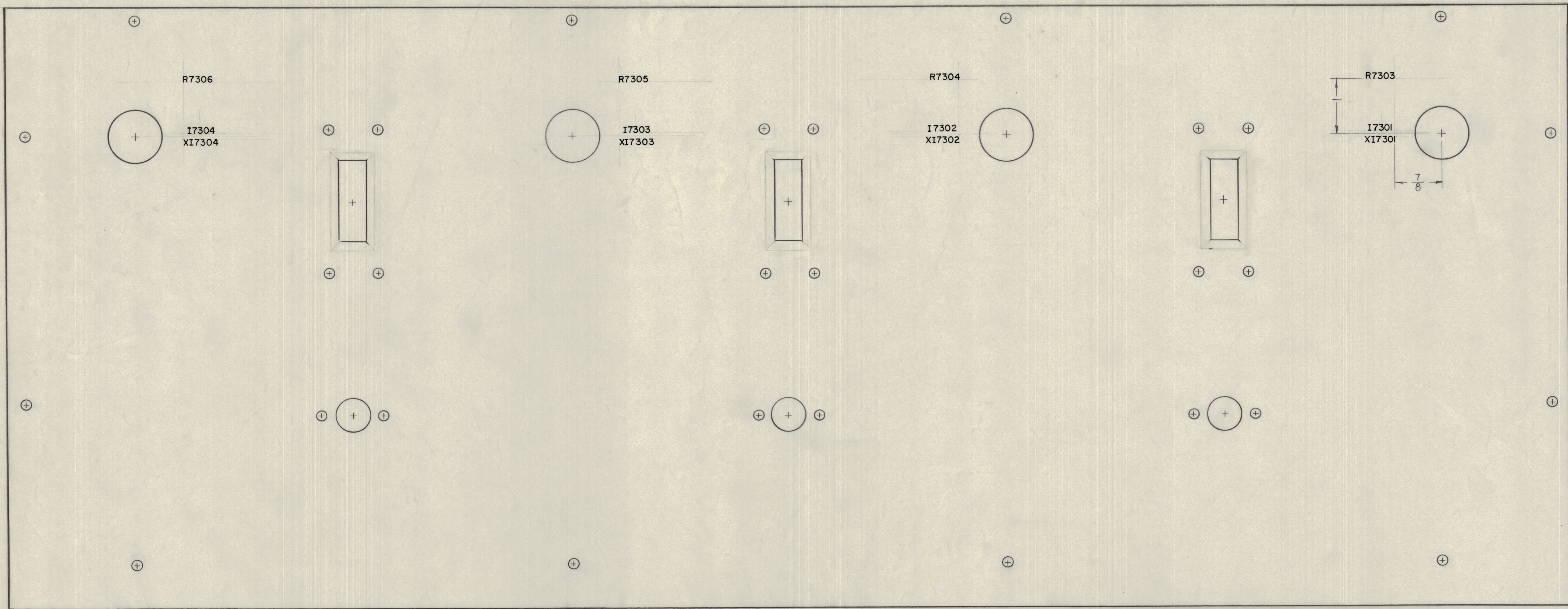


IF IT IS FOUND DESIRABLE TO CHANGE ANY TOLERANCE OR OTHER DETAIL SPECIFIED ON THIS DRAWING NOTIFY THE PURCHASER PROMPTLY.
 MAXIMUM ALLOWABLE TOLERANCES HAVE BEEN DETERMINED AND DEVIATIONS WILL BE CAUSE FOR REJECTION. REMOVE ALL BURRS AND SHARP EDGES



REAR VIEW OF PANEL SHOWN

MARKING PROCESS: AS PER TMC SPEC. S-727
 ALL LETTERING 1/8 HIGH BLACK GOTHIC.

NOTICE TO PERSONS RECEIVING THIS DRAWING

THE TECHNICAL MATERIEL CORPORATION claims proprietary right in the material disclosed herein. This drawing is issued in confidence for engineering information only and may not be reproduced or used to manufacture anything shown herein without permission from THE TECHNICAL MATERIEL CORPORATION to the user. This drawing is loaned for material assistance and is subject to recall at any time.

Property of:
 THE TECHNICAL MATERIEL CORPORATION
 MAMARONECK, NEW YORK

REF ~
 MS-1954 (PANEL, FRONT)
 LD-676 (ENGRAVING, FRONT PANEL)

REQ. ITEM	PART NO.	DESCRIPTION	SYMBOL
		THE TECHNICAL MATERIEL CORP. MAMARONECK, NEW YORK	
	STOCK SIZE	LETTERING, FRONT PANEL, REAR	
	MATERIAL	WEIGHT PER PC.	
	TYPE & TEMPER	John C. Biele	abe
	HEAT TREAT. SPEC.	DRAWN	ELEC. DES. APP. MECH. DES. APP.
	FINISH & SPEC. NO.	CHECKED	FINAL APPROVAL
			LD-677 A

REQ. PER UNIT	MODEL	PROJECT NO.	ASSY. NO.	DATE
1	AX-209	GPT 40K		1-19-60
				USED ON

ISSUE	ITEM	CHANGED FROM	DATE	CH. NO.	DRAFTS	CHECKER	ENG. APP.
A	1	SYMBOLS ADDED	4-8-60	2112			

SCALE: FULL (DO NOT SCALE)

ALL OTHERS	DEC. DIM. ±	FRAC. DIM. ±	ANGULAR DIM. ±

DRILL, PUNCH, COMMERCIAL STOCK SIZES AND MANUFACTURERS TOLERANCES ARE NOT INCLUDED.