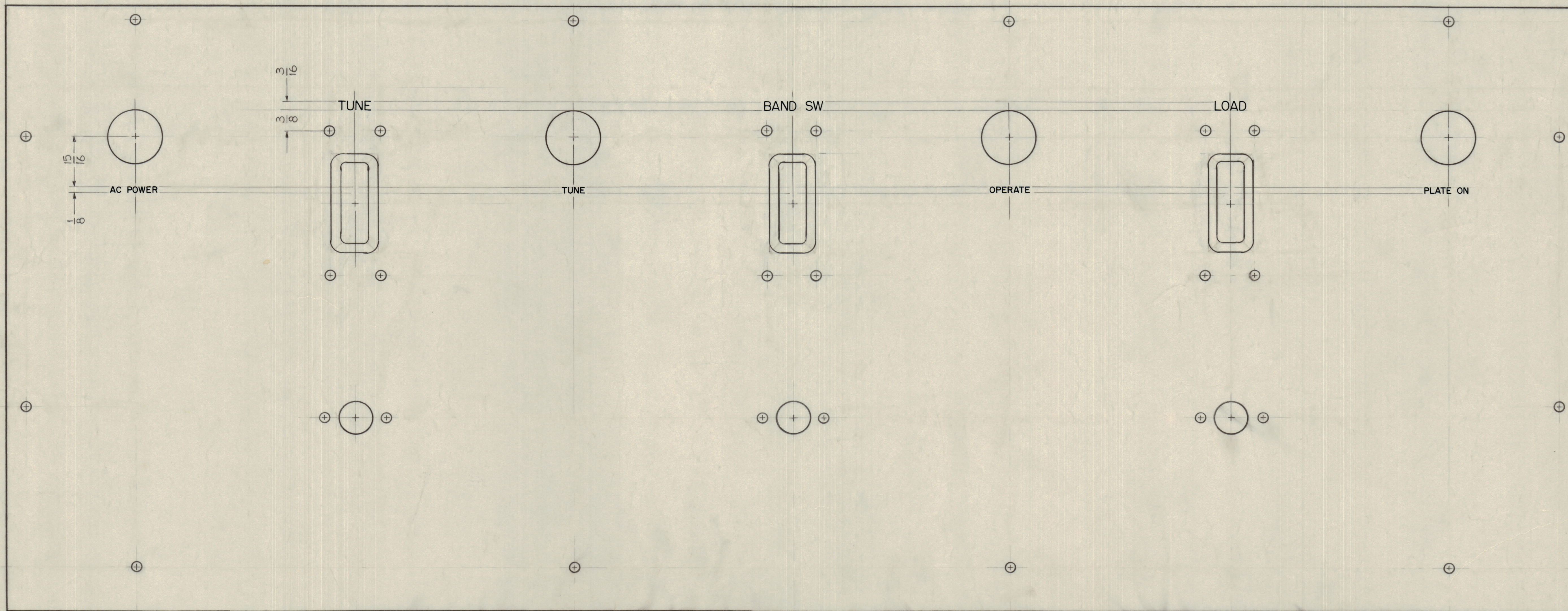


IF IT IS FOUND DESIRABLE TO CHANGE ANY TOLERANCE OR OTHER DETAIL SPECIFIED ON THIS DRAWING NOTIFY THE PURCHASER PROMPTLY.  
 MAXIMUM ALLOWABLE TOLERANCES HAVE BEEN DETERMINED AND DEVIATIONS WILL BE CAUSE FOR REJECTION. REMOVE ALL BURRS AND SHARP EDGES

NOTICE TO PERSONS RECEIVING THIS DRAWING  
 THE TECHNICAL MATERIEL CORPORATION claims no right in the material disclosed herein. This drawing is issued in confidence for engineering information only and may not be re-produced or used to manufacture any lines shown herein without permission from THE TECHNICAL MATERIEL CORPORATION to the user. This drawing is loaned for mutual assistance and is subject to recall at any time.  
 Property of:  
 THE TECHNICAL MATERIEL CORPORATION  
 MAMARONECK, NEW YORK



FRONT VIEW OF PANEL SHOWN

- NOTES ~  
 1~ ALL LETTER GROUPS TO BE CENTERED ON HOLES OR SLOTS.  
 2~ ENGRAVING TO BE GOTHIC, WHITE FILLED, SIZES SHOWN ON CHART.

LETTER HEIGHT	DEPTH OF STROKE	WIDTH OF STROKE
1/8	.010	.020
3/16	.010	.025

REF ~  
 MS-1954 (PANEL, FRONT)  
 LD-677 (LETTERING, FRONT PANEL, REAR)

REQ. ITEM	PART NO.	DESCRIPTION	SYMBOL
		THE TECHNICAL MATERIEL CORP. MAMARONECK, NEW YORK	
		ENGRAVING, FRONT PANEL, PA SECTION	
		John C. Biele	
		DRAWN	ELEC. DES. APP. MECH. DES. APP.
		CHECKED	FINAL APPROVAL
			LD-676

REQ. PER UNIT	MODEL	PROJECT NO.	ASSY. NO.	DATE
1	AX-209	GPT 40K		1-19-60
				USED ON

ISSUE	ITEM	CHANGED FROM	DATE	CN. NO.	DRAFTS	CHECKER	ENG. APP.

TOLERANCES

ALL OTHERS	DEC. DIM. ±	FRAC. DIM. ±	ANGULAR DIM. ±

SCALE:  
 DRILL PUNCH, COMMERCIAL STOCK  
 SIZES AND MANUFACTURERS  
 TOLERANCES ARE NOT INCLUDED.

LD-676