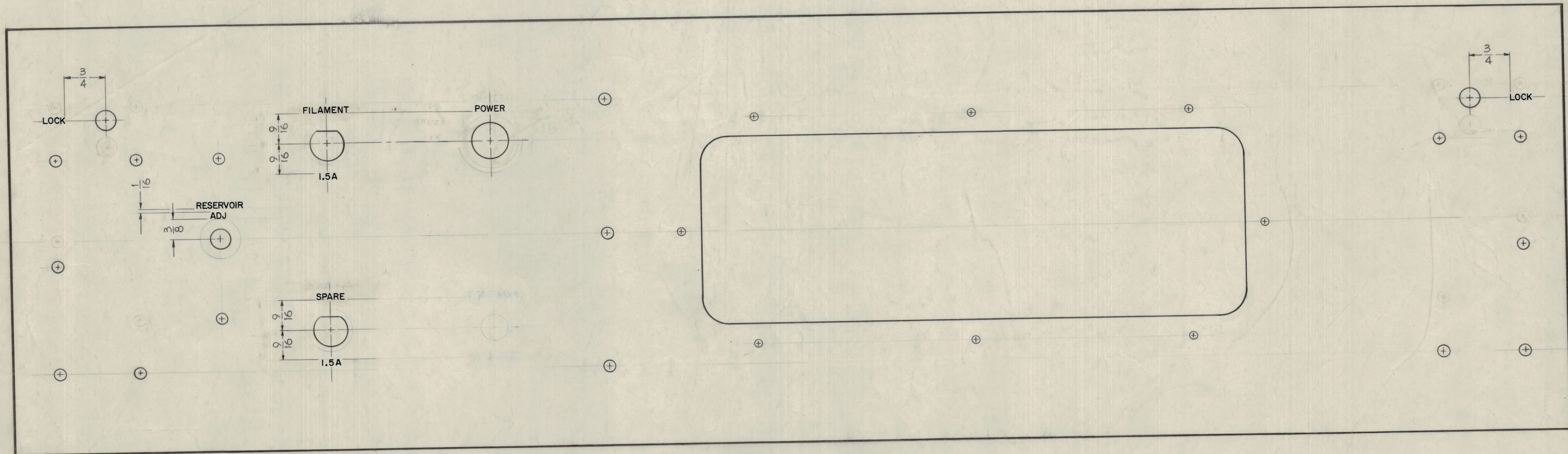


IF IT IS FOUND DESIRABLE TO CHANGE ANY TOLERANCE OR OTHER DETAIL SPECIFIED ON THIS DRAWING NOTIFY THE PURCHASER PROMPTLY.
 MAXIMUM ALLOWABLE TOLERANCES HAVE BEEN DETERMINED AND DEVIATIONS WILL BE CAUSE FOR REJECTION. REMOVE ALL BURRS AND SHARP EDGES



FRONT VIEW OF PANEL

NOTES~

- 1~ ALL LETTER GROUPS TO BE CENTERED ON HOLES.
- 2~ ENGRAVING TO BE GOTHIC, WHITE FILLED SIZES AS SHOWN BELOW.

LETTER HEIGHT	DEPTH OF STROKE	WIDTH OF STROKE
1/8	.010	.020

NOTICE TO PERSONS RECEIVING THIS DRAWING

THE TECHNICAL MATERIEL CORPORATION claims proprietary right in the material disclosed hereon. This drawing is issued in confidence for engineering information only and may not be reproduced or used to manufacture any thing shown hereon without permission from THE TECHNICAL MATERIEL CORPORATION to the user. This drawing is loaned for mutual assistance and is subject to recall at any time.

Property of:
 THE TECHNICAL MATERIEL CORPORATION
 MAMARONECK, NEW YORK

REF: MS1936
 LOCKS BEARING FRONT PANEL (REAR)

C	SEE SHEET 2	3-24-60	17878	GDL	
B	RESERVOIR FILAMENT	6-8-60	1199		
A	WORD RESERVOIR CORRECTED	2-15-60		J.C.B.	
ISSUE	ITEM	CHANGED FROM	DATE	CH. NO.	DRAFTS CHECKER
TOLERANCES		SCALE:			
ALL	DEC. DIM. ±	DRILL, PUNCH, COMMERCIAL STOCK			
OTHERS	FRAC. DIM. ±	SIZES AND MANUFACTURERS			
	ANGULAR DIM. ±	TOLERANCES ARE NOT INCLUDED.			

AX-212	GPT-40K	1-14-60
MODEL	PROJECT NO.	DATE
REQ PER UNIT	USED ON	

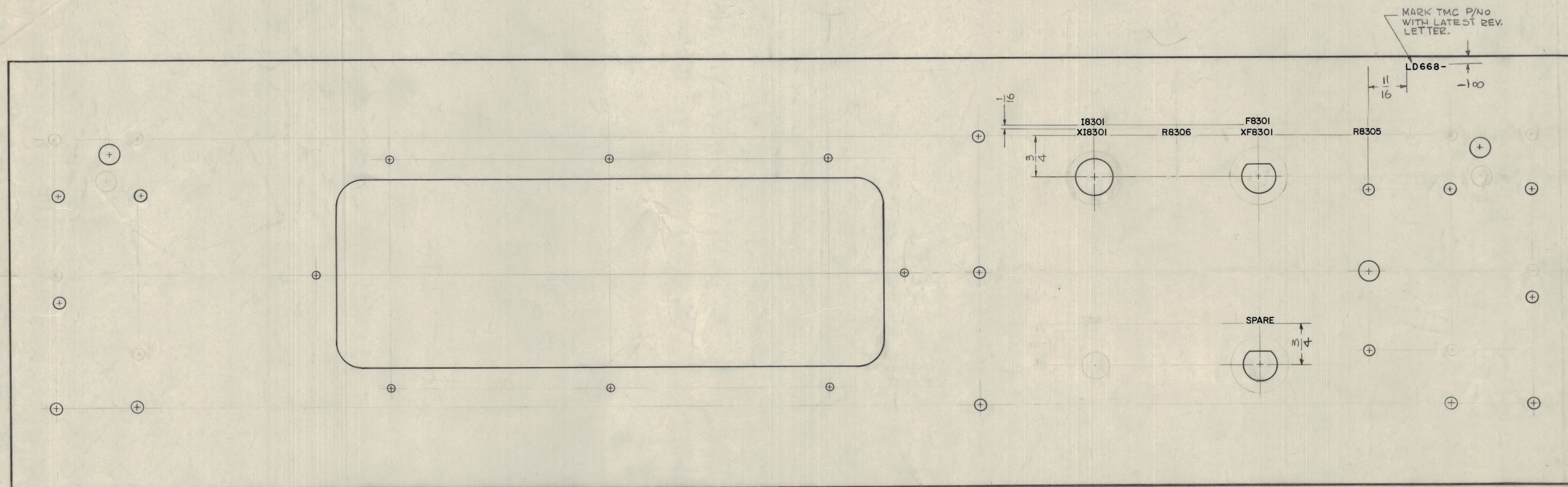
REQ. ITEM	PART NO.	DESCRIPTION	SYMBOL
THE TECHNICAL MATERIEL CORP. MAMARONECK, NEW YORK			
STOCK SIZE			
ENGRAVING, FRONT PANEL (CROWBAR DRAWER)			
MATERIAL WEIGHT PER PC.			
TYPE & TEMPER			
DRAWN: John C. Biele			
ELEC. DES. APP. MECH. DES. APP.			
HEAT TREAT. SPEC. CHECKED: [Signature]			
FINISH & SPEC. NO.			

LD-668 C

LD-668 C
 SHEET 1 OF 2

IF IT IS FOUND DESIRABLE TO CHANGE ANY TOLERANCE OR OTHER DETAIL SPECIFIED ON THIS DRAWING NOTIFY THE PURCHASER PROMPTLY.
 MAXIMUM ALLOWABLE TOLERANCES HAVE BEEN DETERMINED AND DEVIATIONS WILL BE CAUSE FOR REJECTION. REMOVE ALL BURRS AND SHARP EDGES

NOTICE TO PERSONS RECEIVING THIS DRAWING
 THE TECHNICAL MATERIEL CORPORATION claims proprietary right in the material disclosed herein. This drawing is issued in confidence for engineering information only and may not be reproduced or used to manufacture anything shown hereon without permission from THE TECHNICAL MATERIEL CORPORATION to the user. This drawing is loaned for mutual assistance and is subject to recall at any time.
 Property of:
 THE TECHNICAL MATERIEL CORPORATION
 MAMARONECK, NEW YORK



REAR VIEW SHOWN

MARKING PROCESS: AS PER THE SPEC S-127
 NOTE - ALL LETTERING 1/8" HIGH BLACK GOTHIC.

ADDED SHEET 2

C	LD 668 WAS LD 669	3-2-67	17878	G.D.	J.C.B.	J.C.B.	
B	SHEET 2 ADDED	6-0-65	14199	J.C.B.	J.C.B.	J.C.B.	
A	SEE SHEET 1	2-15-60		J.C.B.	J.C.B.	J.C.B.	
ISSUE	ITEM	CHANGED FROM	DATE	CN. NO.	DRAFTS	CHECKER	ENG. APP.
TOLERANCES		SCALE:					
ALL	DEC. DIM. ±	DRILL, PUNCH, COMMERCIAL STOCK					
OTHERS	FRAC. DIM. ±	SIZES AND MANUFACTURERS					
	ANGULAR DIM. ±	TOLERANCES ARE NOT INCLUDED.					

REF -
 LD 668 (ENGRAVING, FRONT PANEL)
 REF: M51936 (FRONT)

REQ. ITEM	PART NO.	DESCRIPTION	SYMBOL
THE TECHNICAL MATERIEL CORP. MAMARONECK, NEW YORK			
LETTERING, FRONT PANEL, REAR (CROWBAR DRAWER)			
DRAWN		FINAL APPROVAL	
CHECKED		FINISH & SPEC. NO.	
LD-668 C			
SHEET 2 OF 2			

AX-212	GPT 40K	1-14-60
REQ PER UNIT	MODEL	DATE
	PROJECT NO.	ASSY. NO.
USED ON		