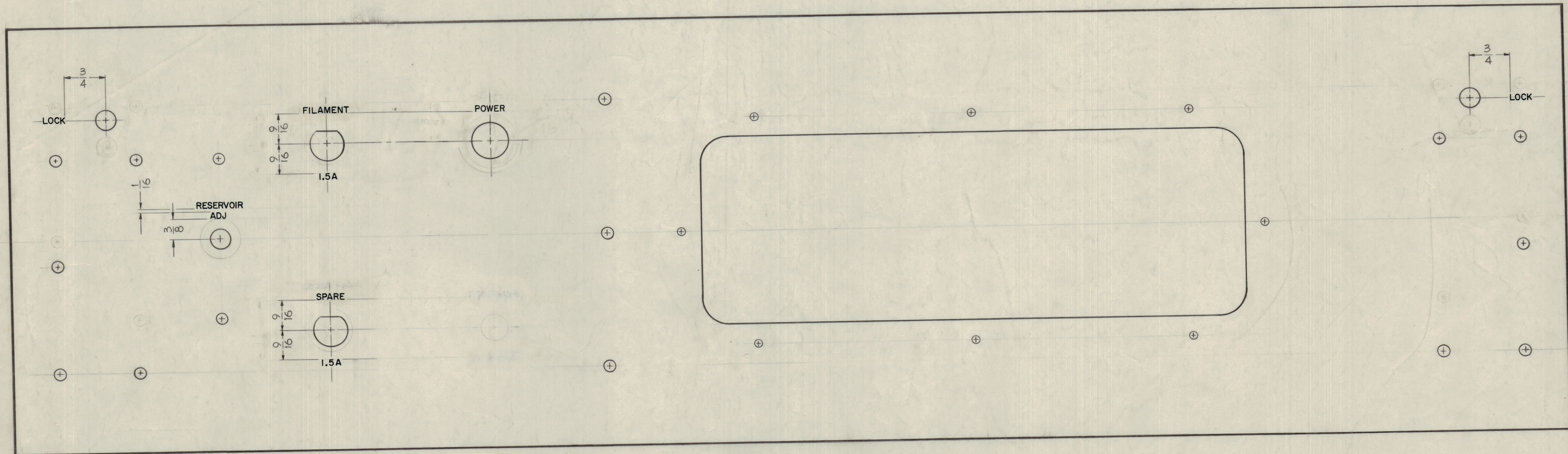


IF IT IS FOUND DESIRABLE TO CHANGE ANY TOLERANCE OR OTHER DETAIL SPECIFIED ON THIS DRAWING NOTIFY THE PURCHASER PROMPTLY.
 MAXIMUM ALLOWABLE TOLERANCES HAVE BEEN DETERMINED AND DEVIATIONS WILL BE CAUSE FOR REJECTION. REMOVE ALL BURRS AND SHARP EDGES



FRONT VIEW OF PANEL

NOTES~

- 1~ ALL LETTER GROUPS TO BE CENTERED ON HOLES.
- 2~ ENGRAVING TO BE GOTHIC, WHITE FILLED SIZES AS SHOWN BELOW.

LETTER HEIGHT	DEPTH OF STROKE	WIDTH OF STROKE
1/8	.010	.020

NOTICE TO PERSONS RECEIVING THIS DRAWING

THE TECHNICAL MATERIEL CORPORATION claims proprietary right in the material disclosed hereon. This drawing is issued in confidence for engineering information only and may not be reproduced or used to manufacture any thing shown hereon without permission from THE TECHNICAL MATERIEL CORPORATION to the user. This drawing is loaned for mutual assistance and is subject to recall at any time.

Property of:
 THE TECHNICAL MATERIEL CORPORATION
 MAMARONECK, NEW YORK

REF: MS1936
 LOCKS BEARING FRONT PANEL (REAR)

C	SEE SHEET 2	3-24-60	17878	GDL	
B	RESERVOIR FILAMENT	6-8-60	1199		
A	WORD RESERVOIR CORRECTED	2-15-60		J.C.B.	
ISSUE	ITEM	CHANGED FROM	DATE	CH. NO.	DRAFTS CHECKER
TOLERANCES		SCALE:			
ALL DEC. DIM. ±		DRILL, PUNCH, COMMERCIAL STOCK			
OTHERS FRAC. DIM. ±		SIZES AND MANUFACTURERS			
		TOLERANCES ARE NOT INCLUDED.			

AX-212	GPT-40K	1-14-60
MODEL	PROJECT NO.	DATE
USED ON		

REQ. ITEM	PART NO.	DESCRIPTION	SYMBOL
THE TECHNICAL MATERIEL CORP. MAMARONECK, NEW YORK			
STOCK SIZE			
ENGRAVING, FRONT PANEL (CROWBAR DRAWER)			
MATERIAL WEIGHT PER PC.			
TYPE & TEMPER			
John C. Biele			
DRAWN		ELEC. DES. APP.	MECH. DES. APP.
CHECKED		FINAL APPROVAL	
HEAT TREAT. SPEC.		DATE	
FINISH & SPEC. NO.		DATE	

LD-668 C

LD-668 C
 SHEET 1 OF 2