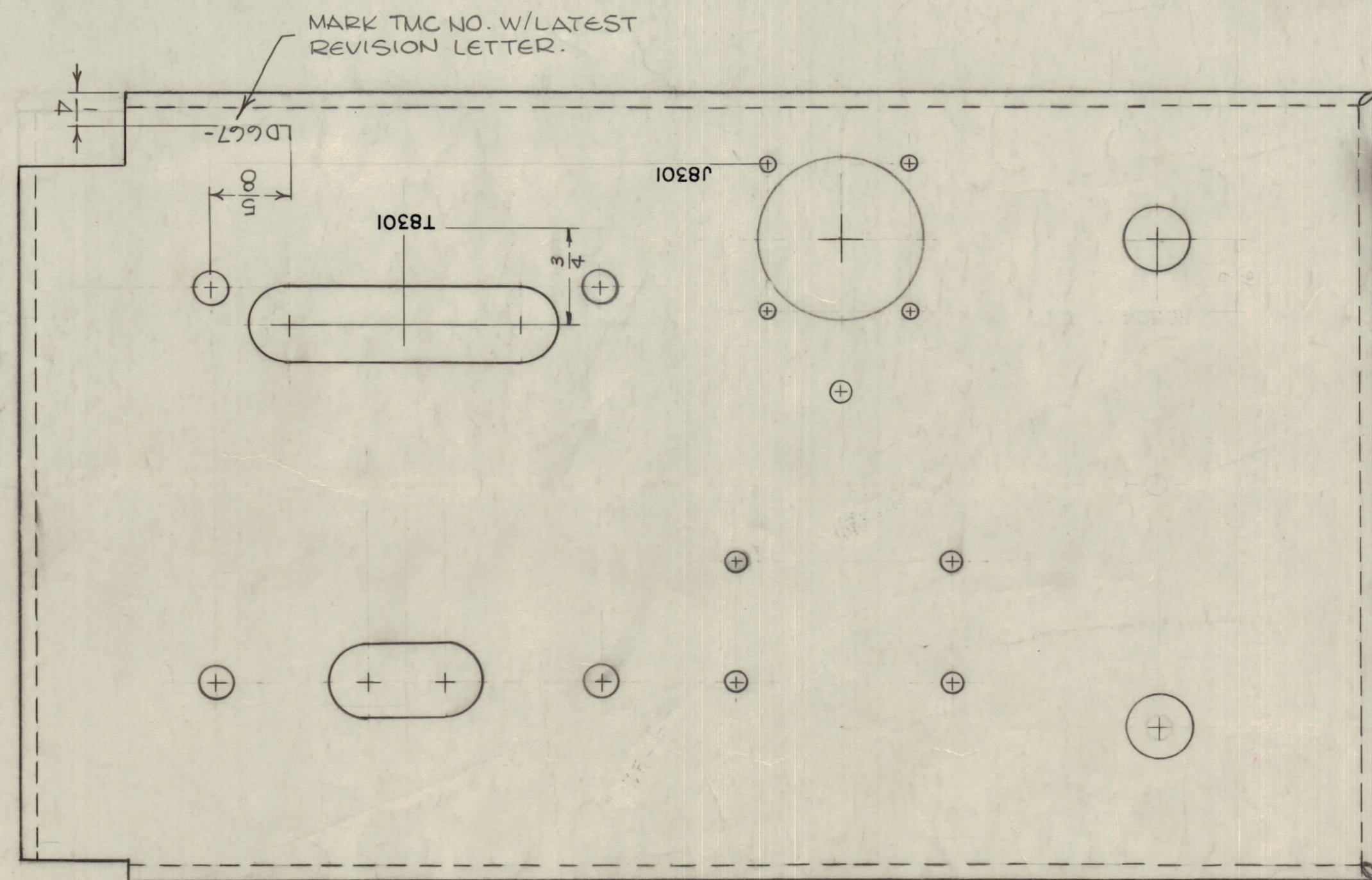
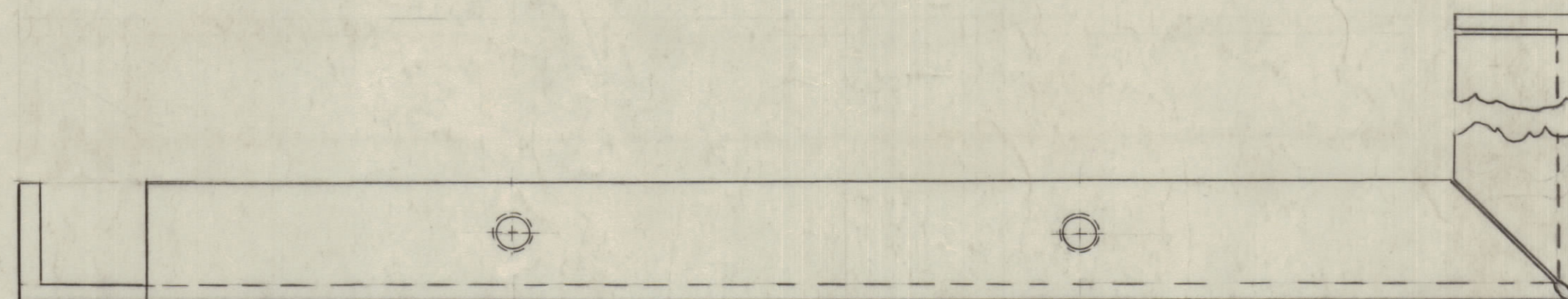
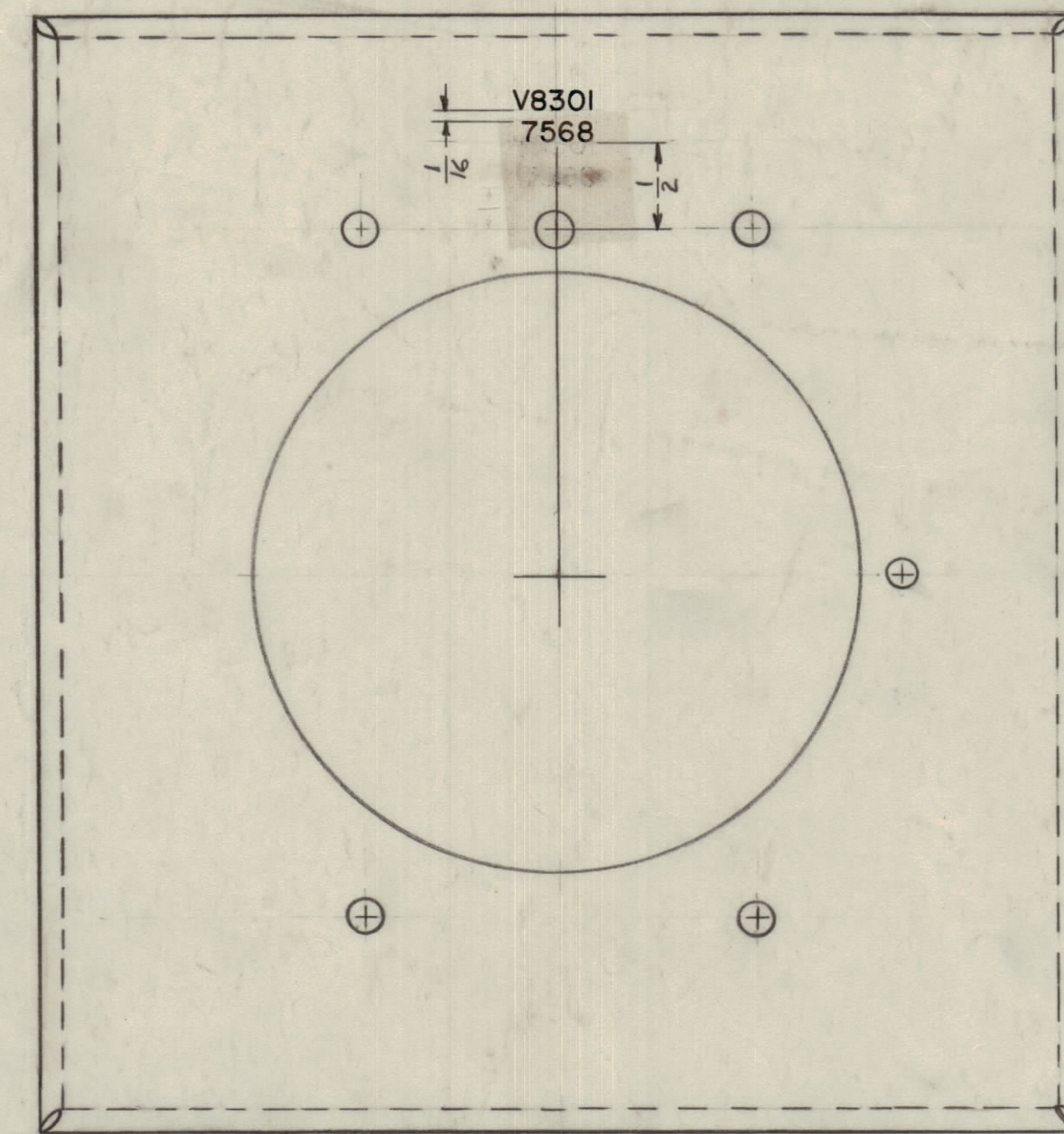
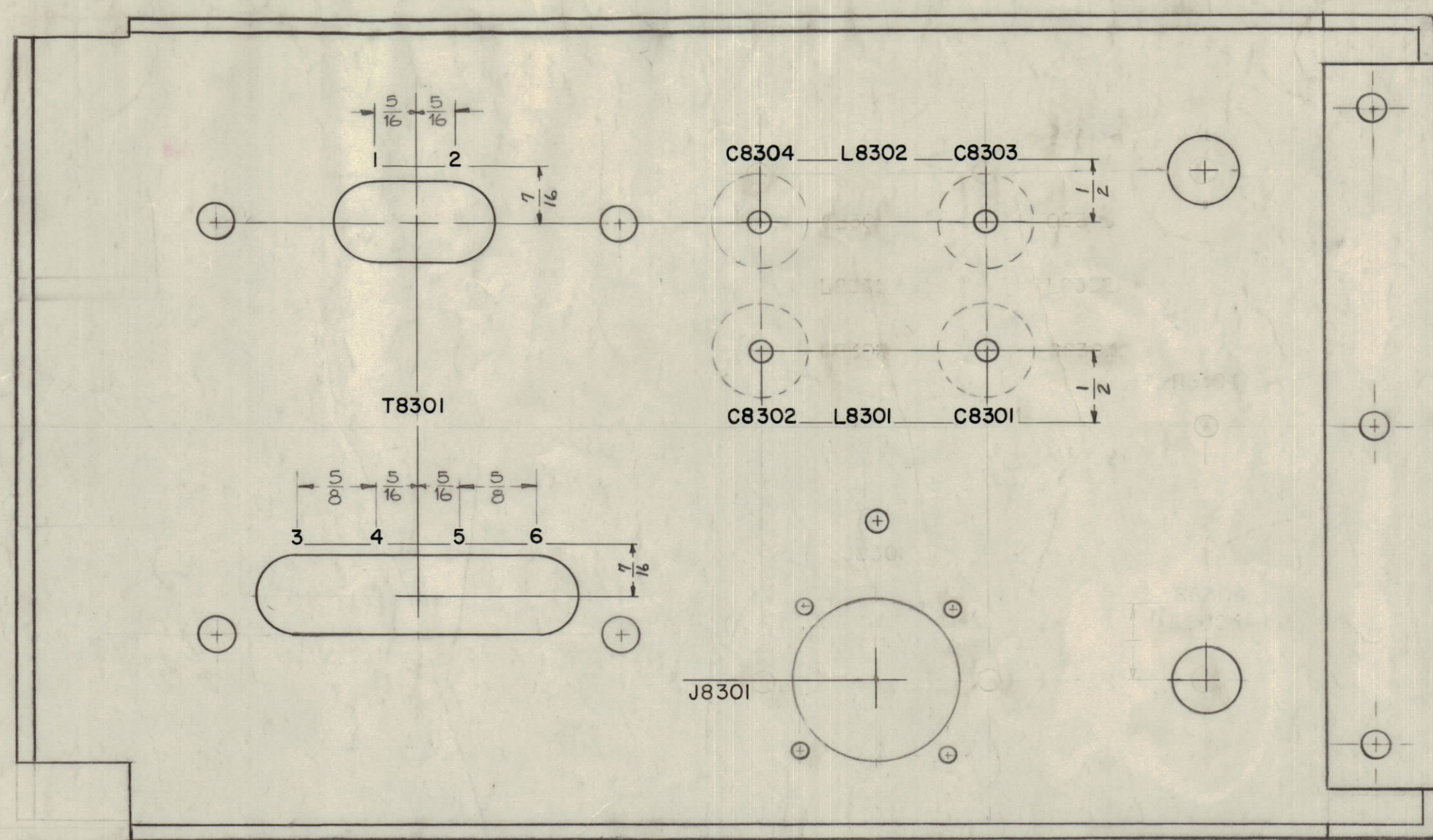
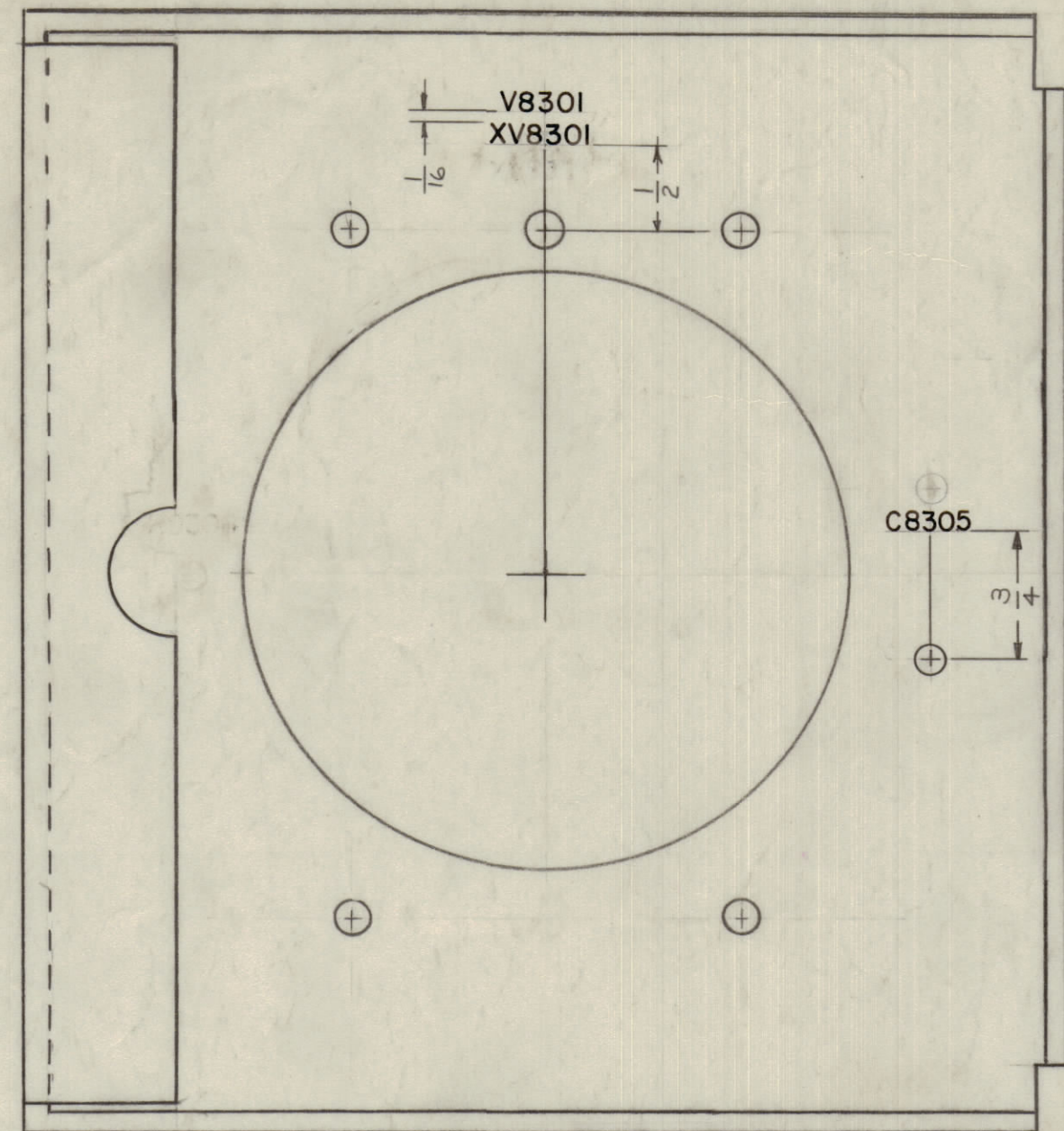


IF IT IS FOUND DESIRABLE TO CHANGE ANY TOLERANCE OR OTHER DETAIL SPECIFIED ON THIS DRAWING NOTIFY THE PURCHASER PROMPTLY.
 MAXIMUM ALLOWABLE TOLERANCES HAVE BEEN DETERMINED AND DEVIATIONS WILL BE CAUSE FOR REJECTION.
 REMOVE ALL BURRS AND SHARP EDGES

NOTICE TO PERSONS RECEIVING THIS DRAWING

THE TECHNICAL MATERIEL CORPORATION claims proprietary right in the material disclosed herein. This drawing is issued in confidence for engineering information only and may not be re-produced or used to manufacture any item shown hereon without permission from THE TECHNICAL MATERIEL CORPORATION to the user. This drawing is loaned for mutual assistance and is subject to recall at any time.

Property of:
 THE TECHNICAL MATERIEL CORPORATION
 MAMARONECK, NEW YORK



NOTE~
 ALL LETTERING 1/8 HIGH BLACK GOTHIC

MARKING PROCESS: AS PER TMC SPECIFICATION S-727

G	R8304 DELETED ADD TMC #	2-20-61	17830				
F	V8301, 7568 RELOCATED	7-22-61	1198	GA			
F	V8301, V8301 RELOCATED						
E	LETTERING DIM. ADDED						
E	1 DIM ADDED TO V8301	5-18-62	6730	EA			
D	C8305 ADDED; DIM. ADDED (R8304)						
D	C8305 DELETED FROM INSIDE VIEW	7-17-61	3253	GDL			
C	V8301 & V8304 RELOCATED	7-27-60	2627	CA			
C	R8304 MOVED TO OUTSIDE VIEW						
B	RELOCATE R8304	6-18-60	2436	CA			
B	DELETE C8305						
A	7568 WAS CH1085	2-1-60	1825	MG			

SCALE: Do Not Scale
 TOLERANCES: DEC. DIM. ±, ANGULAR DIM. ±
 DRILL PUNCH, COMMERCIAL STOCK SIZES AND MANUFACTURERS TOLERANCES ARE NOT INCLUDED.

REF: MS-1935

REQ. ITEM	PART NO.	DESCRIPTION	SYMBOL
THE TECHNICAL MATERIEL CORP. MAMARONECK, NEW YORK			
LETTERING, CHASSIS			
(CROWBAR UNIT)			
MATERIAL		WEIGHT PER PC.	
TYPE & TEMPER		DRAWN	
HEAT TREAT. SPEC.		ELEC. DES. APP.	
CHECKED		MECH. DES. APP.	
FINISH & SPEC. NO.		FINAL APPROVAL	

1	AX-212	GPT-40K		1-18-60
REQ PER UNIT	MODEL	PROJECT NO.	ASBY. NO.	DATE
USED ON				

LD 667 G

COPY

LD 667 G