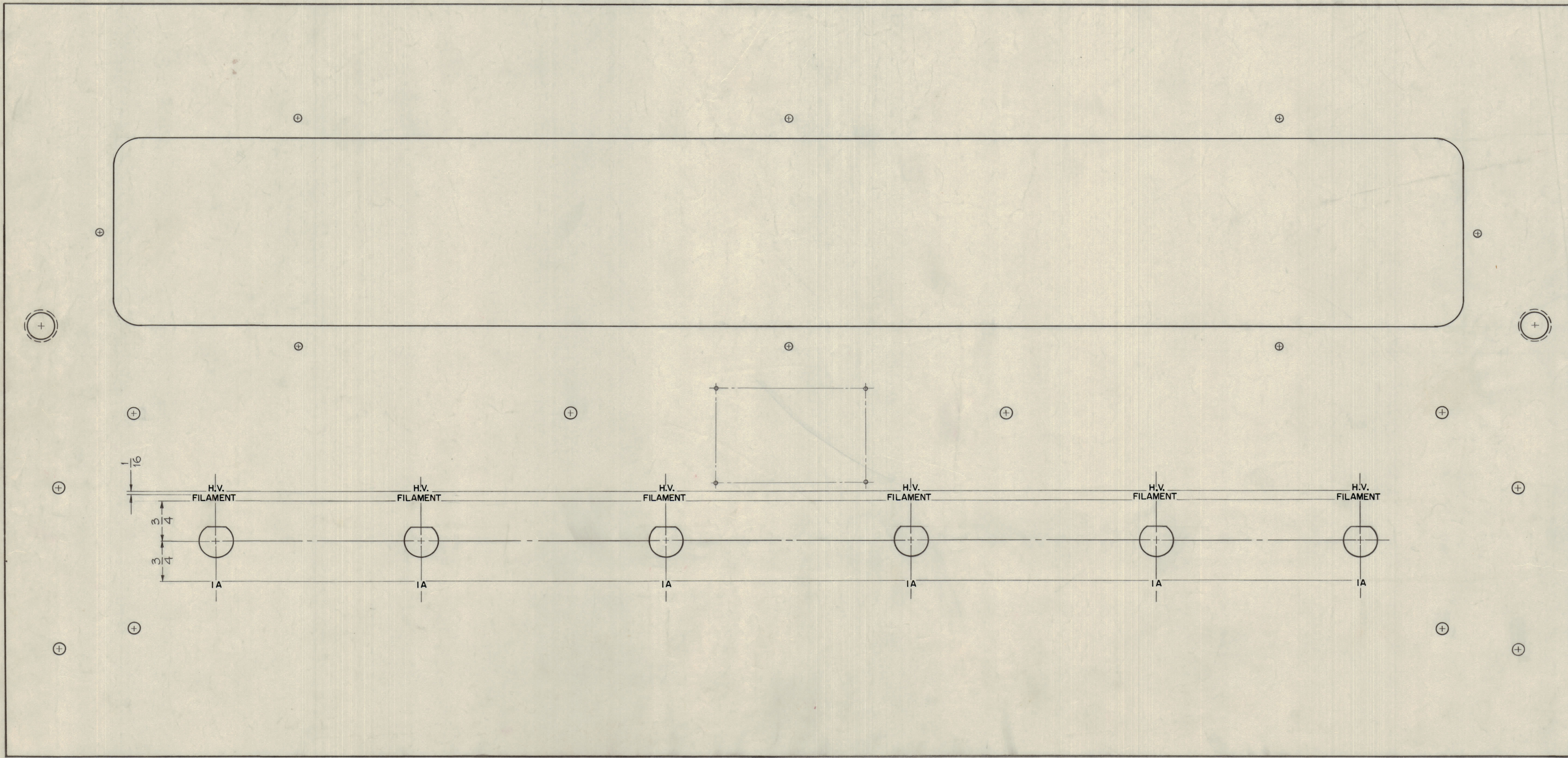


IF IT IS FOUND DESIRABLE TO CHANGE ANY TOLERANCE OR OTHER DETAIL SPECIFIED ON THIS DRAWING NOTIFY THE PURCHASER PROMPTLY.
 MAXIMUM ALLOWABLE TOLERANCES HAVE BEEN DETERMINED AND DEVIATIONS WILL BE CAUSE FOR REJECTION. REMOVE ALL BURRS AND SHARP EDGES

NOTICE TO PERSONS RECEIVING THIS DRAWING
 THE TECHNICAL MATERIEL CORPORATION claims property right in the material disclosed hereon. This drawing is issued in confidence for engineering information only and may not be reproduced or used to manufacture any electrical apparatus without the written permission of THE TECHNICAL MATERIEL CORPORATION. This drawing is issued for technical assistance and is subject to recall at any time.
 Property of:
 THE TECHNICAL MATERIEL CORPORATION
 MAMARONECK, NEW YORK

LD-662 B



FRONT VIEW OF PANEL

NOTES ~
 1~ ALL LETTER GROUPS TO BE CENTERED ON HOLES.
 2~ ENGRAVING TO BE GOTHIC, WHITE FILLED SIZES AS SHOWN BELOW

LETTER HEIGHT	DEPTH OF STROKE	WIDTH OF STROKE
1/8	.010	.020

REF ~ MS-1933 (PANEL, FRONT)

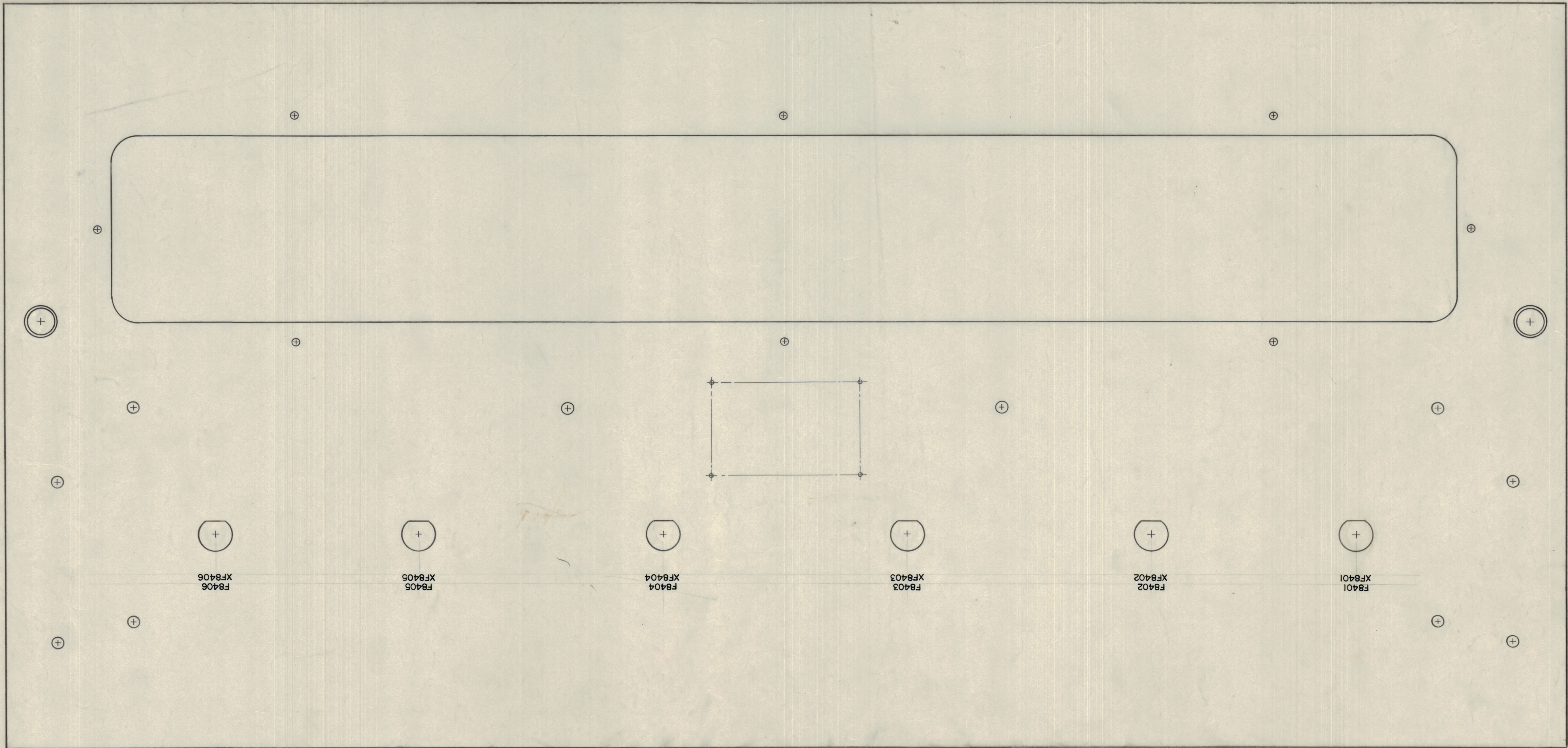
B	2	REF. NOTE LD663, DELE. MARKING WAS ENGRAVING ON TITLE BLOCK: SR. IOP2 ADD.	5.14.64	11392	WB	@	WB
A	1	(4) HOLES ADDED SEEMS-1933-"O"	11.28.62	7740	WB	WB	WB
ISSUE ITEM		CHANGED FROM	DATE	CN. NO.	DRAFTS	CHECKER	ENG. APP.
TOLERANCES		SCALE:					
ALL OTHERS	DEC. DIM. ± FRAC. DIM. ± ANGULAR DIM. ±	DRILL, PUNCH, COMMERCIAL STOCK SIZES AND MANUFACTURERS TOLERANCES ARE NOT INCLUDED.					

AP-105	GPT-40K		1-9-60
REQ. PER UNIT	MODEL	PROJECT NO.	DATE
USED ON			

REQ. ITEM	PART NO.	DESCRIPTION	SYMBOL
THE TECHNICAL MATERIEL CORP. MAMARONECK, NEW YORK			
STOCK SIZE			
MARKING, FRONT PANEL			
MARKING METHOD, ENGRAVING (HIGH VOLTAGE RECTIFIER)			
MATERIAL		WEIGHT PER PC.	
TYPE & TEMPER		John C. Biele	
HEAT TREAT. SPEC.		ELEC. DES. APP. MECH. DES. APP.	
FINISH & SPEC. NO.		Sheet 1 of 2	

IF IT IS FOUND DESIRABLE TO CHANGE ANY TOLERANCE OR OTHER DETAIL SPECIFIED ON THIS DRAWING NOTIFY THE PURCHASER PROMPTLY.
 MAXIMUM ALLOWABLE TOLERANCES HAVE BEEN DETERMINED AND DEVIATIONS WILL BE CAUSE FOR REJECTION. REMOVE ALL BURRS AND SHARP EDGES

TOP OF UNIT



REAR VIEW OF PANEL

MARKING PROCESS: AS PER THE SPEC S-727
 NOTE - ALL LETTERING 1/8 HIGH BLACK GOTHIC.

NOTICE TO PERSONS RECEIVING THIS DRAWING

THE TECHNICAL MATERIEL CORPORATION claims proprietary right in the material disclosed hereon. This drawing is issued in confidence for engineering information only and may not be reproduced or used to manufacture any thing shown hereon without permission from THE TECHNICAL MATERIEL CORPORATION to the user. This drawing is loaned for mutual assistance and is subject to recall at any time.

Property of:
 THE TECHNICAL MATERIEL CORPORATION
 MAMARONECK, NEW YORK
 REF ~ MS-1933 (PANEL, FRONT)

B	1	REF NOTE LD-662 DELE; MARKING WAS ENGRAVING; SH 20PZ ADDED	5.14.64	11392	ASB	Ⓢ	Ⓢ
A	1	40 HOLES ADDED SEE MS-1933-C	11-28-62	7740	Ⓢ	Ⓢ	Ⓢ
ISSUE	ITEM	CHANGED FROM	DATE	CN. NO.	DRAFTS	CHECKER	ENG. APP.
TOLERANCES		SCALE:					
ALL	DEC. DIM. ±	DRILL, PUNCH, COMMERCIAL STOCK					
OTHERS	FRAC. DIM. ±	SIZES AND MANUFACTURERS					
	ANGULAR DIM. ±	TOLERANCES ARE NOT INCLUDED.					

REQ. ITEM	PART NO.	DESCRIPTION	SYMBOL
		THE TECHNICAL MATERIEL CORP. MAMARONECK, NEW YORK	
		MARKING, FRONT PANEL, REAR	
		MARKING METHOD TMC S-727	
		John C. Biele	Ⓢ
		DRAWN	Ⓢ
		ELEC. DES. APP.	Ⓢ
		CHECKED	Ⓢ
		FINAL APPROVAL	Ⓢ
		Sheet 2 of 2	LD-662B

AP-105	GPT 40K	1-11-60		
REQ. PER UNIT	MODEL	PROJECT NO.	ASSY. NO.	DATE

USED ON

LD-662 B