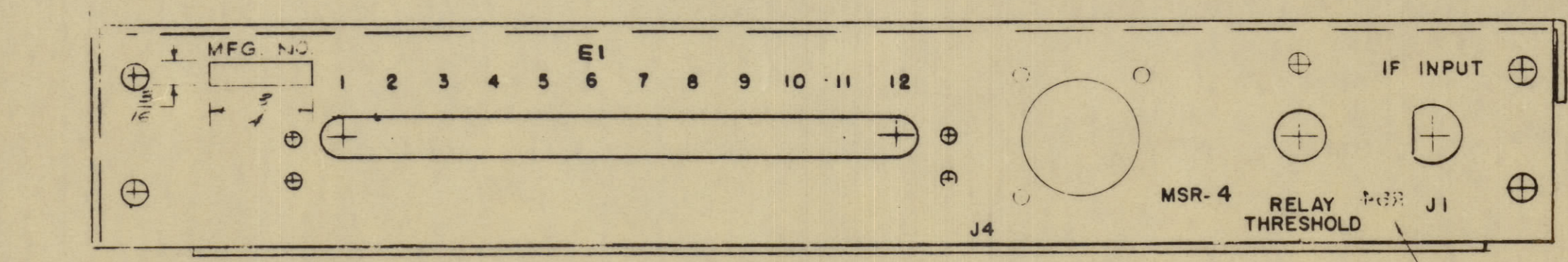
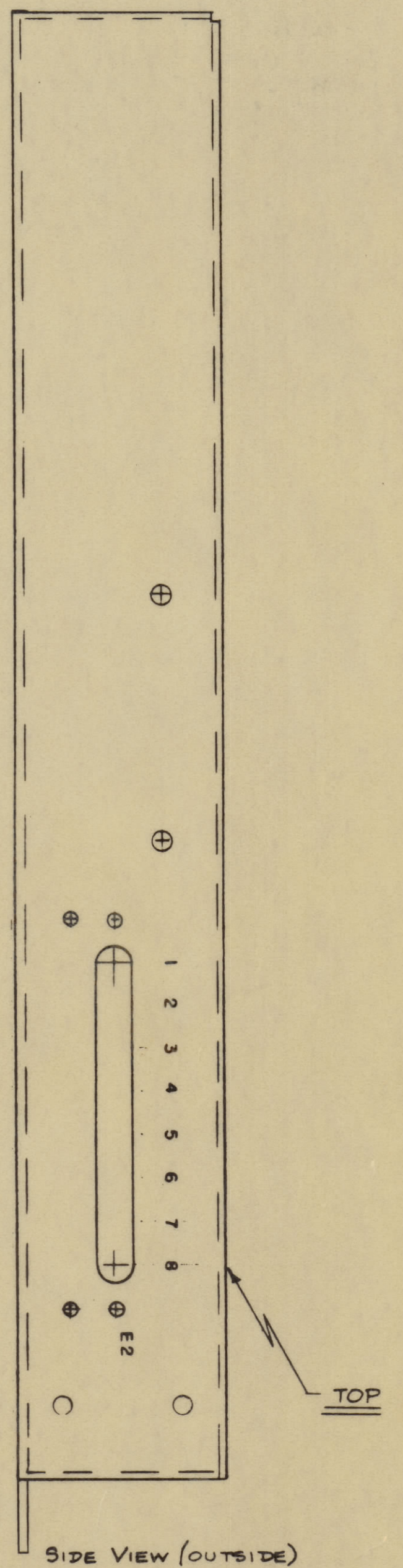
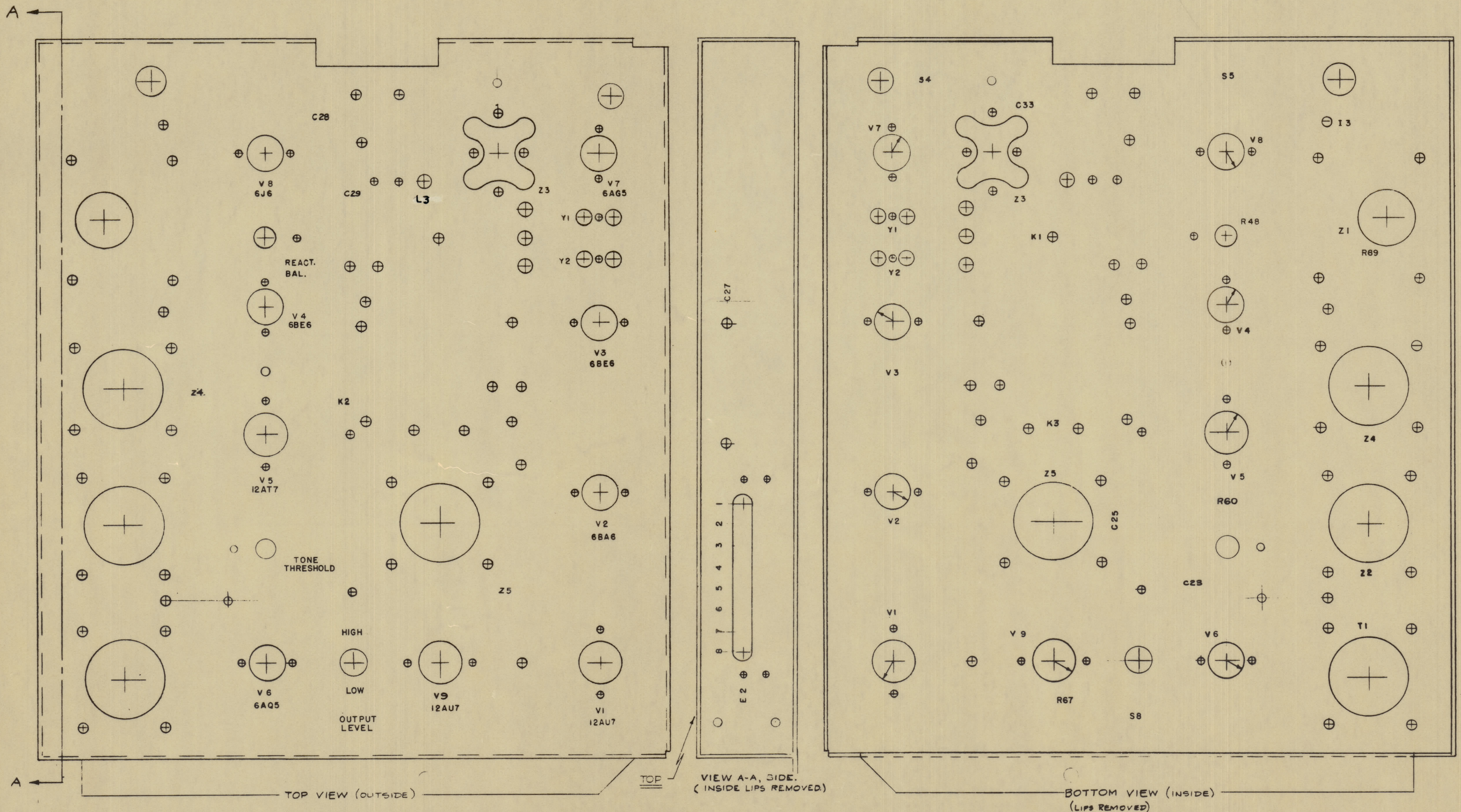


IF IT IS FOUND DESIRABLE TO CHANGE ANY TOLERANCE OR OTHER DETAIL SPECIFIED ON THIS DRAWING NOTIFY THE PURCHASER PROMPTLY.
 MAXIMUM ALLOWABLE TOLERANCES HAVE BEEN DETERMINED AND DEVIATIONS WILL BE CAUSE FOR REJECTION. REMOVE ALL BURRS AND SHARP EDGES



VIEW A-A, SIDE. (INSIDE LIPS REMOVED)

BOTTOM VIEW (INSIDE) (LIPS REMOVED)

SIDE VIEW (OUTSIDE)

NOTE: ARROW INDICATES POSITION OF TUBE SOCKET KEYWAY.

NOTE - ALL LETTERING 1/8" HIGH BLACK GOTHIC.

NOTICE TO PERSONS RECEIVING THIS DRAWING
 THE TECHNICAL MATERIEL CORPORATION claims proprietary right in the material disclosed herein. This drawing is issued in confidence for engineering information only and may not be re-produced or used to manufacture anything shown hereon without permission from THE TECHNICAL MATERIEL CORPORATION to the user. This drawing is loaned for mutual assistance and is subject to recall at any time.

Property of:
 THE TECHNICAL MATERIEL CORPORATION
 MAMARONECK, NEW YORK

REQ. ITEM	PART NO.	DESCRIPTION	SYMBOL
1	MSR-32	LETTERING, MAIN CHASSIS	
THE TECHNICAL MATERIEL CORP. MAMARONECK, NEW YORK			
DRAWN: [Signature] CHECKED: [Signature]			
DATE: 10-26-59			
FINISH & SPEC. NO. LD-636			

ISSUE	ITEM	CHANGED FROM	DATE	CH. NO.	DRAFTS	CHECKER	ENG. APP.
ALL OTHERS	DEC. DIM. ±	FRAC. DIM. ±	ANGULAR DIM. ±	DRILL PUNCH, COMMERCIAL STOCK SIZES AND MANUFACTURERS TOLERANCES ARE NOT INCLUDED.			

REQ. PER UNIT	MODEL	PROJECT NO.	ASBY. NO.	DATE
1	MSR-32			10-26-59

LD-636