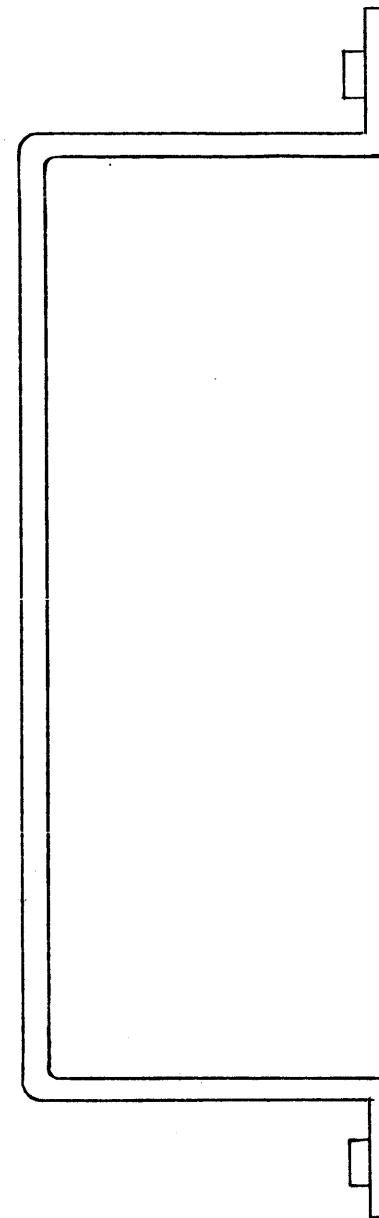
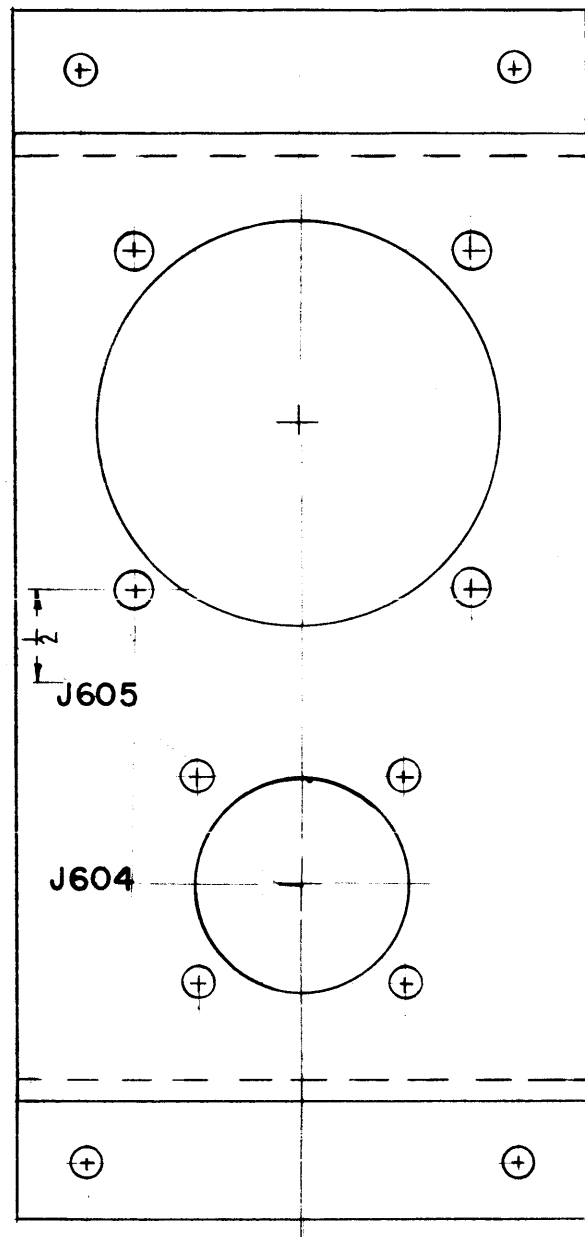


LD-631 B



ALL LETTERING 1/8" BLACK GOTHIC.

NOTICE TO PERSONS RECEIVING THIS DRAWING

THE TECHNICAL MATERIEL CORPORATION claims proprietary right in the material disclosed hereon. This drawing is issued in confidence for engineering information only and may not be reproduced or used to manufacture anything shown hereon without permission from THE TECHNICAL MATERIEL CORPORATION to the user. This drawing is loaned for mutual assistance and is subject to recall at any time.

Property of:
THE TECHNICAL MATERIEL CORPORATION
 MAMARONECK, NEW YORK

REF: MS-1872

ISSUE	ITEM	CHANGED FROM	DATE	CH. NO.	DRAFTS	CHECKER	ENG. APP.
B	1	SIDE LIPS DELETED	7-12-61	5226	G.D.L.	M.H.F.	RK
A	2	J605 WAS J504	12-8-60	3683	RU	JCB	[Signature]
	1	J604 WAS J506					

TOLERANCES		SCALE:
DEC. DIM. ±	MAXIMUM ALLOWABLE TOLERANCES HAVE BEEN DETERMINED AND ANY DEVIATIONS WILL BE CAUSE FOR REJECTION.	
FRAC. DIM. ±	REMOVE ALL BURRS AND SHARP EDGES	
ANGULAR DIM. ±		

REQ. PER UNIT	MODEL	PROJECT NO.	ASS'Y. NO.	DATE
1	RAK-9			10-14-59
USED ON				

REQ. ITEM	PART NO.	DESCRIPTION	SYMBOL
X		THE TECHNICAL MATERIEL CORP. MAMARONECK, NEW YORK	
X		LETTERING, RACK CONNECTOR BRACKET	
X		STOCK SIZE	
X		MATERIAL	
X		TYPE & TEMPER	
X		HEAT TREAT. SPEC.	
X		FINISH & SPEC. NO.	
		DRAWN	
		CHECKED	
		FINAL APPROVAL	
		ELEC. DES. APP.	
		MECH. DES. APP.	

LD-631 B