

IF IT IS FOUND DESIRABLE TO CHANGE ANY TOLERANCE OR OTHER DETAIL SPECIFIED ON THIS DRAWING NOTIFY THE PURCHASER PROMPTLY.

MAXIMUM ALLOWABLE TOLERANCES HAVE BEEN DETERMINED AND DEVIATIONS WILL BE CAUSE FOR REJECTION. REMOVE ALL BURRS AND SHARP EDGES.

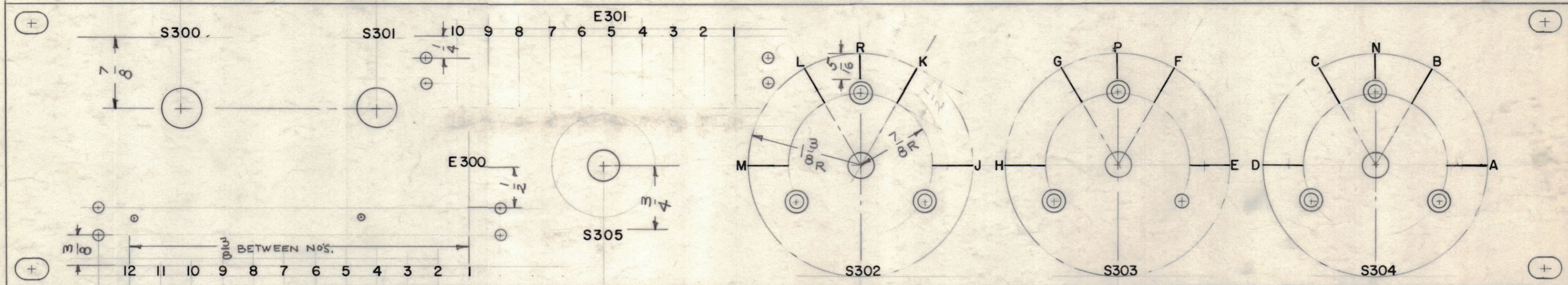
NOTICE TO PERSONS RECEIVING THIS DRAWING

THE TECHNICAL MATERIEL CORPORATION claims proprietary right in the material disclosed hereon. This drawing is issued in confidence for engineering information only and may not be reproduced or used to manufacture anything shown hereon without permission from THE TECHNICAL MATERIEL CORPORATION to the user. This drawing is loaned for mutual assistance and is subject to recall at any time.

Property of:

THE TECHNICAL MATERIEL CORPORATION
MAMARONECK, NEW YORK

REAR OF PANEL SHOWN



USE SAME NOTE
FOR S303 & S404 THE X DISPLACEMENT
IS THE SAME AS S302

LD-628 A

ALL LETTERING TO BE 1/8" BLACK GOTHIC.

MARKING PROCESS: AS PER TMC SPECIFICATION S-727

OBsolete
THIS DWG. INCORPORATED ON
LD-629

M5-1902 - FRONT PANEL
LD-629 - ENG. FRONT PANEL

REQ. ITEM	PART NO.	DESCRIPTION	SYMBOL
		THE TECHNICAL MATERIEL CORP. MAMARONECK, NEW YORK	
		LETTERING, REAR OF PANEL	
		MCP-2	
		10-15-59	
		CHECKED	FINAL APPROVAL
			LD-628 A

ISSUE	ITEM	CHANGED FROM	DATE	CH. NO.	DRAFTS	CHECKER	ENG. APP.
A	1	OBS. NOTE ADDED	9-8-61	5536	RA	OB	LB

REQ. PER UNIT	MODEL	PROJECT NO.	ASSY. NO.	DATE
1	MCP-2			10-15-59