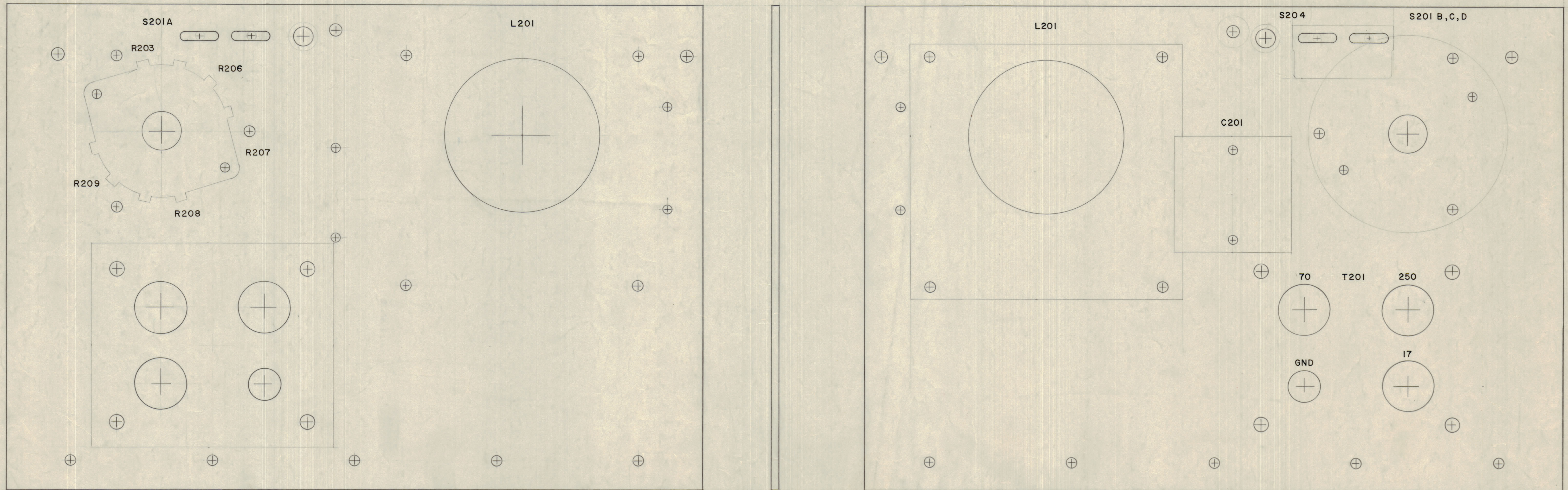


IF IT IS FOUND DESIRABLE TO CHANGE ANY TOLERANCE OR OTHER DETAIL SPECIFIED ON THIS DRAWING NOTIFY THE PURCHASER PROMPTLY.
 MAXIMUM ALLOWABLE TOLERANCES HAVE BEEN DETERMINED AND DEVIATIONS WILL BE CAUSE FOR REJECTION. REMOVE ALL BURRS AND SHARP EDGES



LD-621 A

LETTERING 1/8 HIGH BLACK GOTHIC

MARKING PROCESS: AS PER T M C SPECIFICATION S-727

NOTICE TO PERSONS RECEIVING THIS DRAWING

THE TECHNICAL MATERIEL CORPORATION claims proprietary right in the material disclosed herein. This drawing is issued in confidence for engineering information only and may not be reproduced or used to manufacture anything shown herein without permission from THE TECHNICAL MATERIEL CORPORATION to the user. This drawing is loaned for mutual assistance and is subject to recall at any time.

Property of:
 THE TECHNICAL MATERIEL CORPORATION
 MAMARONECK, NEW YORK

A	X	PICT. CLARIFIED	4/16/59	cc	2	QCB	
ISSUE	ITEM	CHANGED FROM	DATE	EN. NO.	DRAFTS	CHECKER	ENG. APP.
TOLERANCES		SCALE: FULL					
ALL OTHERS	DEC. DIM. ± FRAC. DIM. ± ANGULAR DIM. ±	DRILL, PUNCH, COMMERCIAL STOCK SIZES AND MANUFACTURERS TOLERANCES ARE NOT INCLUDED.					

Ref-4MS-1819

REQ. ITEM	PART NO.	DESCRIPTION	SYMBOL
THE TECHNICAL MATERIEL CORP. MAMARONECK, NEW YORK			
STOCK SIZE			
MATERIAL			
WEIGHT PER PC.			
TYPE & TEMPER			
DRAWN			
ELEC. DES. APP.			
MECH. DES. APP.			
HEAT TREAT. SPEC.			
CHECKED			
FINAL APPROVAL			
LD-621 A			

1	TU-2	ATS-2		10-2-59
REQ PER UNIT	MODEL	PROJECT NO.	ASSY. NO.	DATE
USED ON				