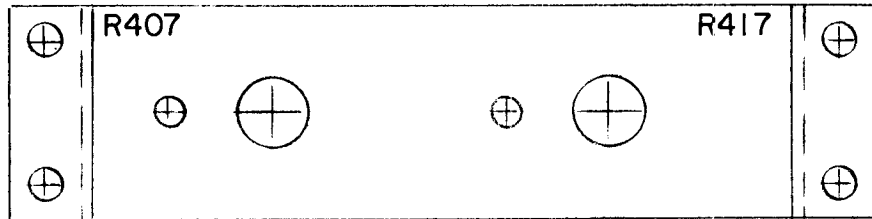


| | | | | |
|----------------------|---------|-------------|---------|--------|
| REQ. PER. UNIT | USED ON | | | LD-510 |
| | MODEL | ASS'Y. NO. | DATE | |
| 1 | SLM | P/O GPT-10K | 2-17-59 | |

TOP



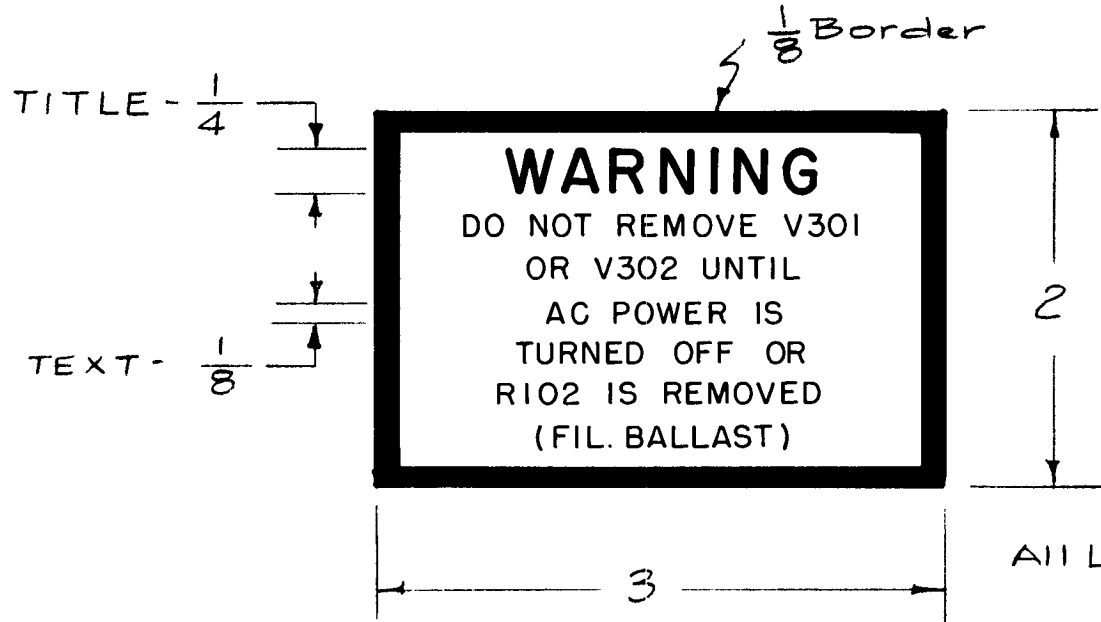
MARKING PROCESS: AS PER T M C SPECIFICATION S-727

LETTERING: 1/8 HIGH BLACK, GOTHIC
LOCATED AS SHOWN.

Ref: 2 MS-1575

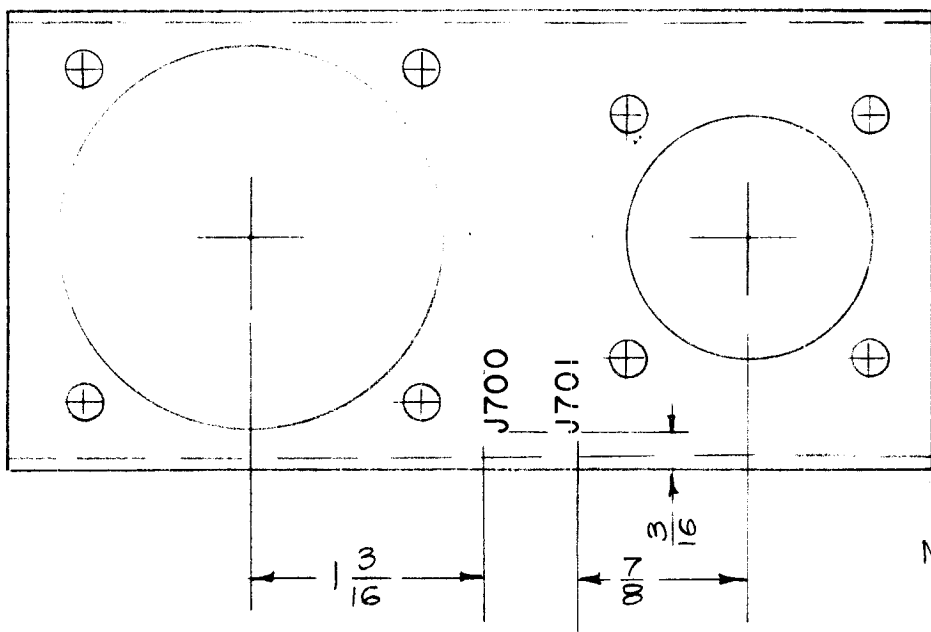
| ISSUE | ITEM | CHANGED FROM | DATE | CH. NO. | DRAFTS | CHECKER | ENG. APP. | REQ. | ITEM | PART NO. | DESCRIPTION | SYMBOL | | | | | | | |
|-------------------|------|--------------|--|---------|--------|---------|-----------|--------------------|------|-------------------|--|----------------|--|---------|--|----------------|--|--|--|
| | | | | | | | | | | | THE TECHNICAL MATERIEL CORP. MAMARONECK, NEW YORK | | | | | | | | |
| | | | | | | | | | | | LETTERING, POT. BRACKET (SIDE BAND LEVEL MONITOR) | | | | | | | | |
| | | | | | | | | | | | 16 ² /17/59 | | | | | | | | |
| | | | | | | | | | | | APB | | | | | | | | |
| | | | | | | | | | | | LD-510 | | | | | | | | |
| TOLERANCES | | | SCALE: FULL | | | | | TYPE & TEMPER | | HEAT TREAT. SPEC. | | DRAWN | | CHECKED | | FINAL APPROVAL | | | |
| DEC. DIM. ± | | | MAXIMUM ALLOWABLE TOLERANCES HAVE BEEN DETERMINED AND ANY DEVIATIONS WILL BE CAUSE FOR REJECTION. REMOVE ALL BURRS AND SHARP EDGES | | | | | | | | | RWB | | 208 | | LD-510 | | | |
| FRAC. DIM. ± 1/64 | | | | | | | | FINISH & SPEC. NO. | | ELEC. DES. APP | | MECH. DES. APP | | | | | | | |
| ANGULAR DIM. ± | | | | | | | | | | | | | | | | | | | |

| | | | | |
|----------------------|---------|------------|--------|--------|
| REQ. PER. UNIT | USED ON | | | LD-515 |
| | MODEL | ASS'Y. NO. | DATE | |
| 1 | PMO | LD-516 | 3-4-59 | |



| ISSUE | ITEM | CHANGED FROM | DATE | CH. NO. | DRAFTS | CHECKER | ENG. APP. | REQ. | ITEM | PART NO. | DESCRIPTION | SYMBOL | |
|--|------|--------------|---|---------|--------|---------|-----------|--------------------|-------------------|-------------------------------|--|----------------|--|
| | | | | | | | | | | | THE TECHNICAL MATERIEL CORP. MAMARONECK, NEW YORK | | |
| | | | | | | | | | | STOCK SIZE Rubber Stamp | STAMP, WARNING, V301 & V302 (PMO) | | |
| | | | | | | | | | | MATERIAL | | | |
| | | | | | | | | | | | 6 ³ / ₄ /59 | | |
| TOLERANCES | | | SCALE: FULL | | | | | | | | | | |
| DEC. DIM. ± FRAC. DIM. ± ¹ / ₆₄ ANGULAR DIM. ± | | | MAXIMUM ALLOWABLE TOLERANCES HAVE BEEN DETERMINED AND ANY DEVIATIONS WILL BE CAUSE FOR REJECTION. REMOVE ALL BURRS AND SHARP EDGES | | | | | TYPE & TEMPER | HEAT TREAT. SPEC. | DRAWN | CHECKED | FINAL APPROVAL | |
| | | | | | | | | FINISH & SPEC. NO. | | ELEC. DES. APP | MECH. DES. APP | LD-515 | |

| | | | | |
|----------------|---------|------------|--------|--------|
| REQ. PER. UNIT | USED ON | | | LD-523 |
| | MODEL | ASS'Y. NO. | DATE | |
| 1 | GPT-1DK | | 4-8-59 | |

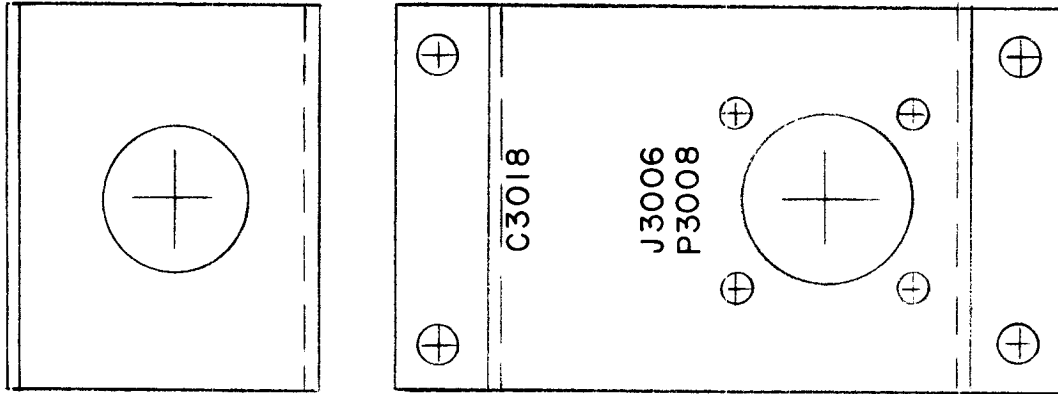


MARKING PROCESS; AS PER TMC SPEC S-727
 Lettering 1/8 high black Gothic

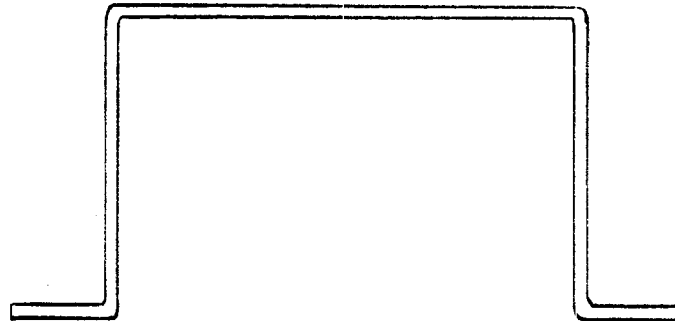
Ref-IMS-1510

| ISSUE | ITEM | CHAN ED FROM | DATE | CH. NO. | DRAFTS | CHECKER | ENG. APP. | REQ. | ITEM | PART NO. | DESCRIPTION | SYMBOL | |
|--|------|--------------|---|---------|--------|---------|-----------|--------------------|-------------------|-------------------------------|---|----------------|--------|
| | | | | | | | | | | | THE TECHNICAL MATERIEL CORP. MAMARONECK, NEW YORK LETTERING, RECEPTACLE MOUNT (RELAY DECK, T1-106) | | |
| | | | | | | | | | | STOCK SIZE | | | |
| | | | | | | | | | | MATERIAL | | | |
| | | | | | | | | | | | | | |
| TOLERANCES | | | SCALE: FULL | | | | | | | | 16 ⁴ / ₈ /59 | JMS | ARB |
| DEC. DIM. ± FRAC. DIM. ± 1/64 ANGULAR DIM. ± | | | MAXIMUM ALLOWABLE TOLERANCES HAVE BEEN DETERMINED AND ANY DEVIATIONS WILL BE CAUSE FOR REJECTION. REMOVE ALL BURRS AND SHARP EDGES | | | | | TYPE & TEMPER | HEAT TREAT. SPEC. | DRAWN | CHECKED | FINAL APPROVAL | |
| | | | | | | | | | | | | | LD-523 |
| | | | | | | | | FINISH & SPEC. NO. | | ELEC. DES. APP MECH. DE . APP | | | |

| | | | | |
|----------------|---------|------------|--------|--------|
| REQ. PER. UNIT | USED ON | | | LD-530 |
| | MODEL | ASS'Y. NO. | DATE | |
| 1 | GPT-10K | AX-111 | 5-5-59 | |



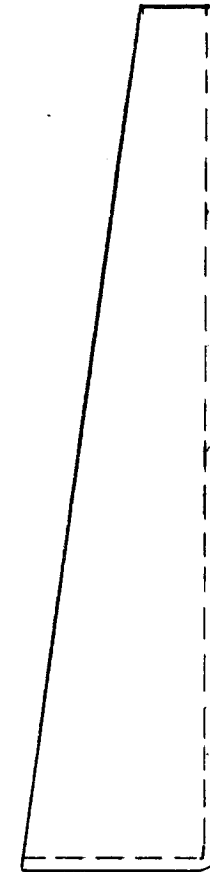
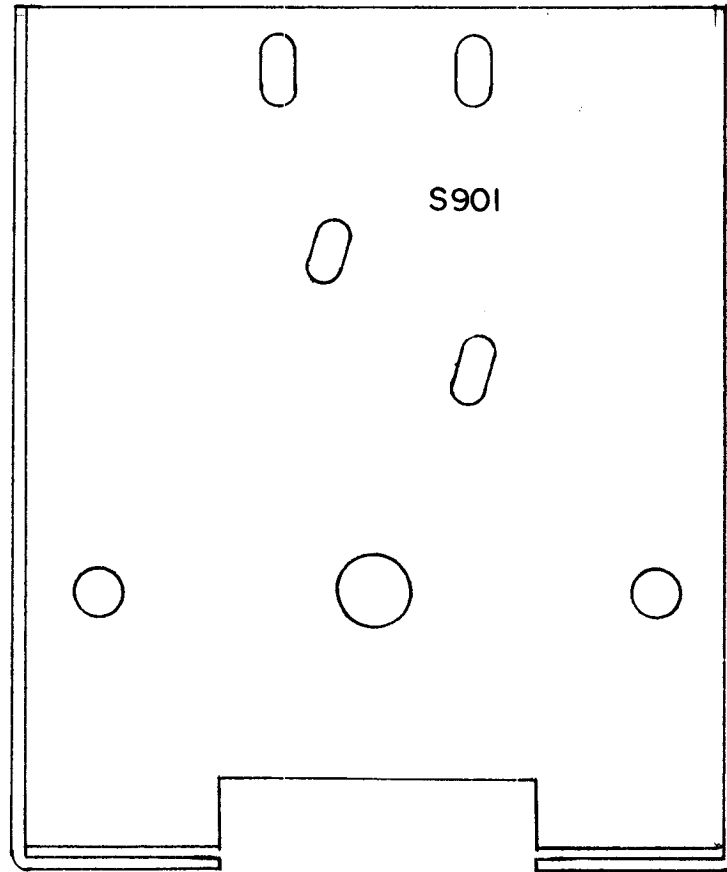
MARKING PROCESS:
AS PER TMC SPEC S-727.
ALL LETTERING 1/8 HIGH
BLACK GOTHIC



Ref-2MS-1611

| ISSUE | ITEM | CHAN ED FROM | DATE | CH. NO. | DRAFTS | CHECKER | ENG. APP. | REQ. | ITEM | PART NO. | DESCRIPTION | SYMBOL | | | | |
|----------------|------|--------------|--|---------|--------|---------|-----------|--------------------|------------------|----------------|------------------------------|----------------|--|--|--|--|
| | | | | | | | | | | | THE TECHNICAL MATERIEL CORP. | | | | | |
| | | | | | | | | | | | MAMARONECK, NEW YORK | | | | | |
| | | | | | | | | | | | LETTERING, TOP FAN | | | | | |
| | | | | | | | | | | | CAPACITOR BRACKET (AX-111) | | | | | |
| TOLERANCES | | | SCALE: FULL | | | | | | | | 6/5/59 | | | | | |
| DEC. DIM. ± | | | MAXIMUM ALLOWABLE TOLERANCES HAVE BEEN DETERMINED AND ANY DEVIATIONS WILL BE CAUSE FOR REJECTION. REMOVE ALL BURRS AND SHARP EDGES | | | | | TYPE & TEMPER | HEATTREAT. SPEC. | DRAWN | CHECKED | FINAL APPROVAL | | | | |
| FRAC. DIM. ± | | | | | | | | | | | | | | | | |
| ANGULAR DIM. ± | | | | | | | | | | | | | | | | |
| | | | | | | | | FINISH & SPEC. NO. | | ELEC. DES. APP | MECH. DES. APP | LD-530 | | | | |

| | | | | | |
|----------------------|---------|------------|--------|--------|---|
| REQ. PER. UNIT | USED ON | | | LD-556 | A |
| | MODEL | ASS'Y. NO. | DATE | | |
| 1 | 925-135 | | 5-7-59 | | |

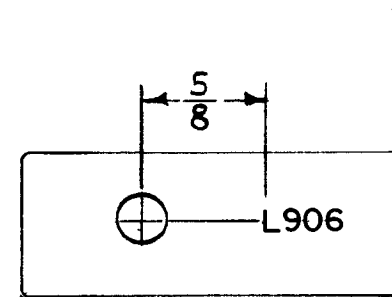
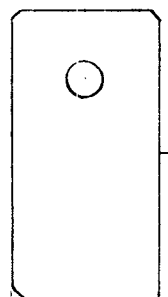
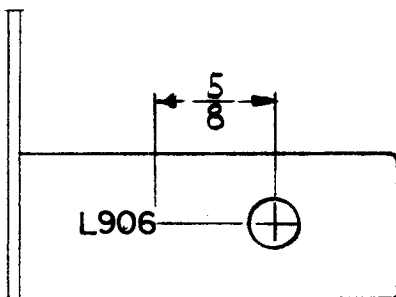


MARKING PROCESS: AS PER TMC S-727.
ALL LETTERING 1/8 BLACK GOTHIC.

Ref-(2)MS-1567

| | | | | | | | | | | | | | |
|----------------|------|-------------------|--|---------|--------|---------------|---------------|--------------------|------|-------------------|------------------------------|----------------|----------------|
| | | | | | | | | REQ. | ITEM | PART NO. | DESCRIPTION | | SYMBOL |
| | | | | | | | | | | | THE TECHNICAL MATERIEL CORP. | | |
| | | | | | | | | STOCK SIZE | | | MAMARONECK, NEW YORK | | |
| A | 1 | LIP DELETED (TOP) | 3-27-62 | 6538 | G.S. | AS | AS | MATERIAL | | | LETTERING, PA BANDSW. DETENT | | |
| ISSUE | ITEM | CHANGED FROM | DATE | CH. NO. | DRAFTS | CHECKER | ENG. APP. | | | | BRACKET (TI-102) | | |
| TOLERANCES | | | SCALE: FULL | | | | | | | | 5-7-59 | | |
| DEC. DIM. ± | | | MAXIMUM ALLOWABLE TOLERANCES HAVE BEEN DETERMINED AND ANY DEVIATIONS WILL BE CAUSE FOR REJECTION. REMOVE ALL BURRS AND SHARP EDGES | | | | | TYPE & TEMPER | | HEAT TREAT. SPEC. | DRAWN | CHECKED | FINAL APPROVAL |
| FRAC. DIM. ± | | | | | | | | | | | | | |
| ANGULAR DIM. ± | | | | | | | | FINISH & SPEC. NO. | | | ELEC. DES. APP | MECH. DES. APP | |
| | | | | | | | | | | | LD-556 | A | |

| | | | | | |
|----------------------|--------------------|-----------|--------|--------|---|
| REQ. PER. UNIT | USED ON | | | LD-558 | A |
| | MODEL | ASSY. NO. | DATE | | |
| 1 | 907-1015 AX-137 | | 5-8-59 | | |



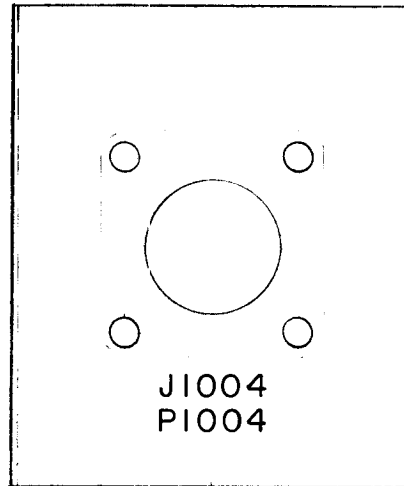
MARKING PROCESS: AS PER T M C SPECIFICATION S-727.

LETTERING: 1/8 HIGH BLACK, GOTHIC
LOCATED AS SHOWN.

REF-1MS-1600

| REQ. | ITEM | PART NO. | DESCRIPTION | | | | SYMBOL |
|---|------|--------------------|---|----------------|----------------|---------|----------------|
| | | | THE TECHNICAL MATERIEL CORP. MAMARONECK, NEW YORK | | | | |
| | | | LETTERING, COIL SUPPORT BKT. (L906) | | | | TI-102 |
| A | 1 | L906 RELOCATED | 32461 | 4450 | MAF | JCB | 200 |
| ISSUE | ITEM | CHANGED FROM | DATE | CH. NO. | DRAFTS | CHECKER | ENG. APP. |
| TOLERANCES | | | SCALE: FULL | | | | |
| DEC. DIM. ± FRAC. DIM. ± ANGULAR DIM. ± | | | MAXIMUM ALLOWABLE TOLERANCES HAVE BEEN DETERMINED AND ANY DEVIATIONS WILL BE CAUSE FOR REJECTION. REMOVE ALL BURRS AND SHARP EDGES | | | | |
| | | TYPE & TEMPER | HEAT TREAT. SPEC. | | DRAWN | CHECKED | FINAL APPROVAL |
| | | FINISH & SPEC. NO. | | ELEC. DES. APP | MECH. DES. APP | LD-558 | A |

| | | | | |
|----------------------|---------|------------|--------|--------|
| REQ. PER. UNIT | USED ON | | | LD-561 |
| | MODEL | ASS'Y. NO. | DATE | |
| 1 | GPT-10K | AX-177 | 5-7-59 | |



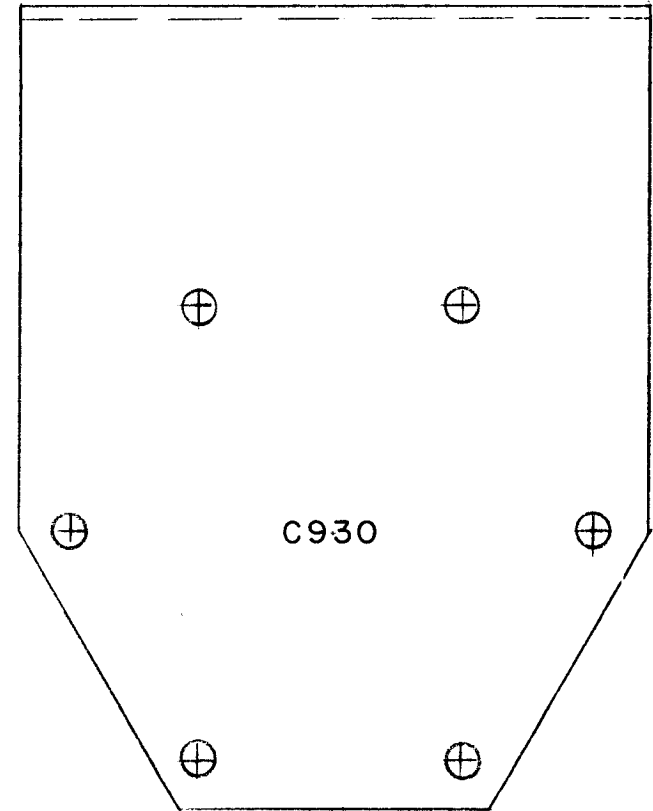
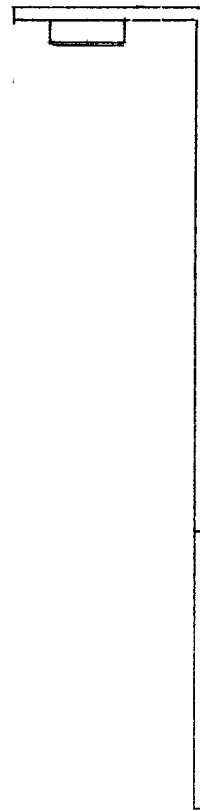
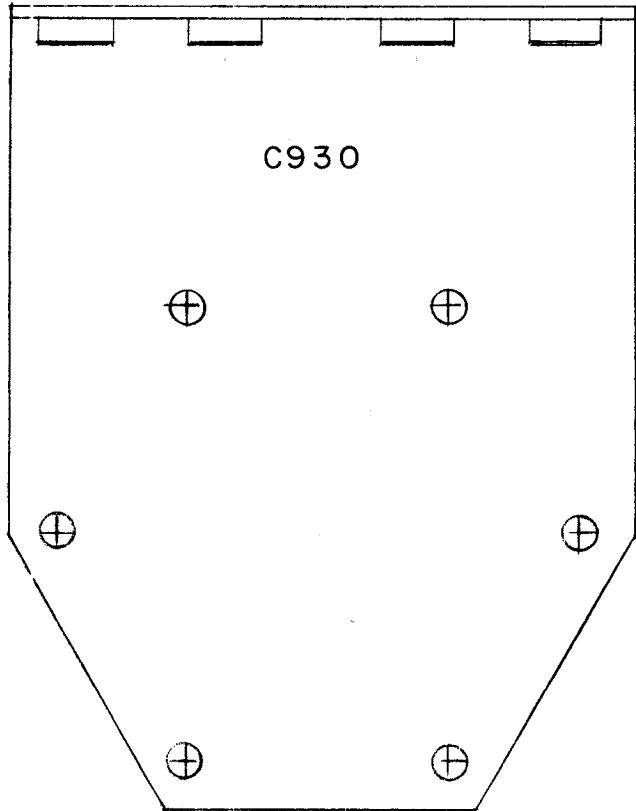
MARKING PROCESS: AS PER T M C SPECIFICATION S-727

LETTERING 1/8 HIGH BLACK GOTHIC
(AFTER PAINTING AS PER BX-177)

Ref: 2BX-177

| ISSUE | ITEM | CHANGED FROM | DATE | CH. NO. | DRAFTS | CHECKER | ENG. APP. | REQ. | ITEM | PART NO. | DESCRIPTION | SYMBOL | | | |
|---|------|--------------|---|---------|--------|---------|-----------|------|------|------------|---|-------------------|----------------|---------|----------------|
| | | | | | | | | | | | THE TECHNICAL MATERIEL CORP. MAMARONECK, NEW YORK LETTERING, RF CONNECTOR CASE | | | | |
| | | | | | | | | | | STOCK SIZE | | | | | |
| | | | | | | | | | | MATERIAL | | | | | |
| | | | | | | | | | | | | | | | |
| TOLERANCES | | | SCALE: FULL | | | | | | | | 16 ^{5/7} /59 | H20 | DBB | | |
| DEC. DIM. ± FRAC. DIM. ± ANGULAR DIM. ± | | | MAXIMUM ALLOWABLE TOLERANCES HAVE BEEN DETERMINED AND ANY DEVIATIONS WILL BE CAUSE FOR REJECTION. REMOVE ALL BURRS AND SHARP EDGES | | | | | | | | TYPE & TEMPER | HEAT TREAT. SPEC. | DRAWN | CHECKED | FINAL APPROVAL |
| | | | | | | | | | | | | | GG | LD-561 | |
| | | | | | | | | | | | FINISH & SPEC. NO. | ELEC. DES. APP | MECH. DES. APP | | |

| | | | | |
|----------------------|---------|------------|--------|--------|
| REQ. PER. UNIT | USED ON | | | LD-574 |
| | MODEL | ASS'Y. NO. | DATE | |
| | GPT-10K | AX-137 | 5-8-59 | |



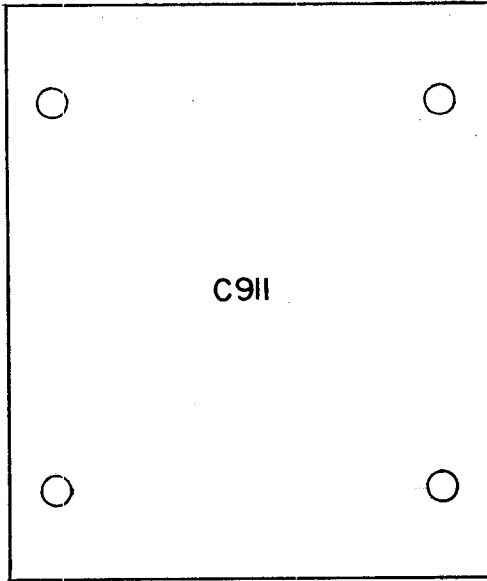
LETTERING 1/8 HIGH BLACK GOTHIC
MARKING PROCESS; AS PER TMC SPEC S-727.

REF-2MS-1514

| | | | | | | | | | | | | | | | | |
|----------------|------|--------------|--|---------|--------|---------|-----------|--------------------|------|-------------------|-------------------------------|----------------------|----------------|--|--|--|
| | | | | | | | | REQ. | ITEM | PART NO. | DESCRIPTION | | SYMBOL | | | |
| | | | | | | | | | | | THE TECHNICAL MATERIEL CORP. | | | | | |
| | | | | | | | | STOCK SIZE | | | MAMARONECK, NEW YORK | | | | | |
| | | | | | | | | MATERIAL | | | LETTERING, CAPACITOR SUPPORT, | | | | | |
| | | | | | | | | | | | (C930) TI-102 | | | | | |
| ISSUE | ITEM | CHAN ED FROM | DATE | CH. NO. | DRAFTS | CHECKER | ENG. APP. | | | 15/8/59 | Handwritten initials | Handwritten initials | | | | |
| TOLERANCES | | | SCALE: FULL | | | | | TYPE & TEMPER | | HEAT TREAT. SPEC. | DRAWN | CHECKED | FINAL APPROVAL | | | |
| DEC. DIM. ± | | | MAXIMUM ALLOWABLE TOLERANCES HAVE BEEN DETERMINED AND ANY DEVIATIONS WILL BE CAUSE FOR REJECTION. REMOVE ALL BURRS AND SHARP EDGES | | | | | | | | | | | | | |
| FRAC. DIM. ± | | | | | | | | | | | | | | | | |
| ANGULAR DIM. ± | | | | | | | | | | | | | | | | |
| | | | | | | | | FINISH & SPEC. NO. | | ELEC. DES. APP. | | MECH. DES. APP. | | | | |
| | | | | | | | | | | | | LD-574 | | | | |

| | | | | |
|---------------------------|-----------------|---------------------|-----------------|--------|
| REQ. PER UNIT 2 | USED ON | | | LD-576 |
| | MODEL TI-102 | ASS'Y. N. AT-100 | DATE 5-11-59 | |

GPT-10K



NOTICE TO PERSONS RECEIVING THIS DRAWING

THE TECHNICAL MATERIEL CORPORATION claims proprietary right in the material disclosed hereon. This drawing is issued in confidence for engineering information only and may not be reproduced or used to manufacture anything shown hereon without permission from THE TECHNICAL MATERIEL CORPORATION to the user. This drawing is loaned for mutual assistance and is subject to recall at any time.

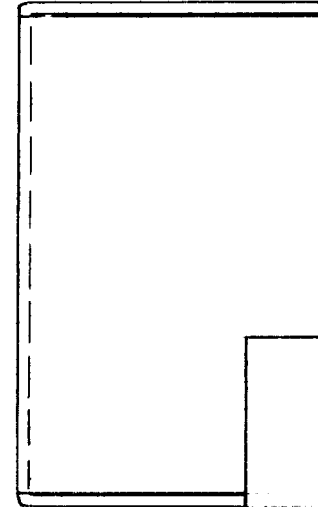
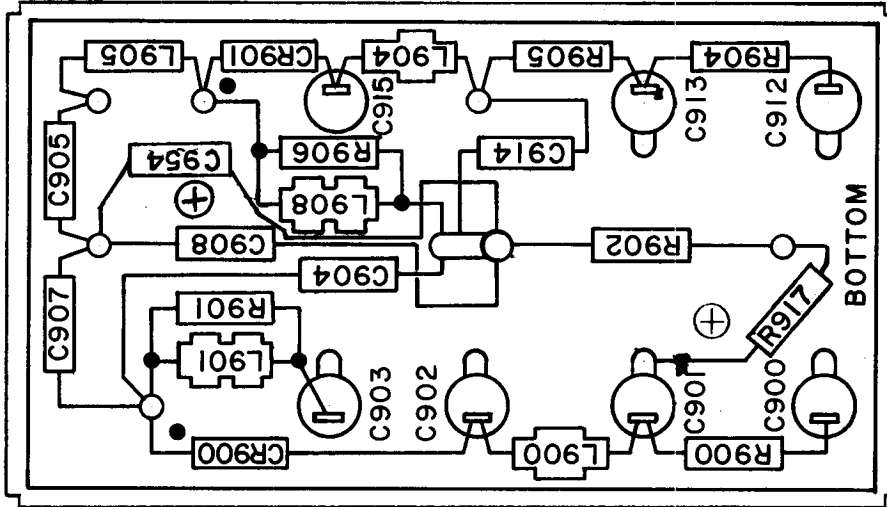
Property of:
THE TECHNICAL MATERIEL CORPORATION
MAMARONECK, NEW YORK

MARKING PROCESS:
AS PER TMC SPEC 5-727.
ALL LETTERING 1/8 BLACK GOTHIC.

Ref- 1PX-453

| | | | | | | | | REQ. | ITEM | PART NO. | DESCRIPTION | SYMBOL | |
|---|------|--------------|--|---------|--------|---------|-----------|--------------------|------|-------------------|--|--------------------|----------------|
| | | | | | | | | | | | THE TECHNICAL MATERIEL CORP. MAMARONECK, NEW YORK | | |
| | | | | | | | | STOCK SIZE | | | LETTERING, CAPACITOR MOUNT, (C911) AT-100 | | |
| | | | | | | | | MATERIAL | | | | | |
| ISSUE | ITEM | CHANGED FROM | DATE | CH. NO. | DRAFTS | CHECKER | ENG. APP. | | | P. IORILLO | <i>[Signature]</i> | <i>[Signature]</i> | |
| TOLERANCES | | | SCALE: FULL | | | | | TYPE & TEMPER | | HEAT TREAT. SPEC. | DRAWN | CHECKED | FINAL APPROVAL |
| DEC. DIM. ± FRAC. DIM. ± ANGULAR DIM. ± | | | MAXIMUM ALLOWABLE TOLERANCES HAVE BEEN DETERMINED AND ANY DEVIATIONS WILL BE CAUSE FOR REJECTION. REMOVE ALL BURRS AND SHARP EDGES | | | | | FINISH & SPEC. NO. | | ELEC. DES. APP | | MECH. DES. APP | LD-576 |

| | | | | | |
|----------------|--------------------|------------|---------|--------|---|
| REQ. PER. UNIT | USED ON | | | LD-578 | C |
| | MODEL | ASS'Y. NO. | DATE | | |
| 1 | 9PT-101K RX-137 | | 5-12-59 | | |

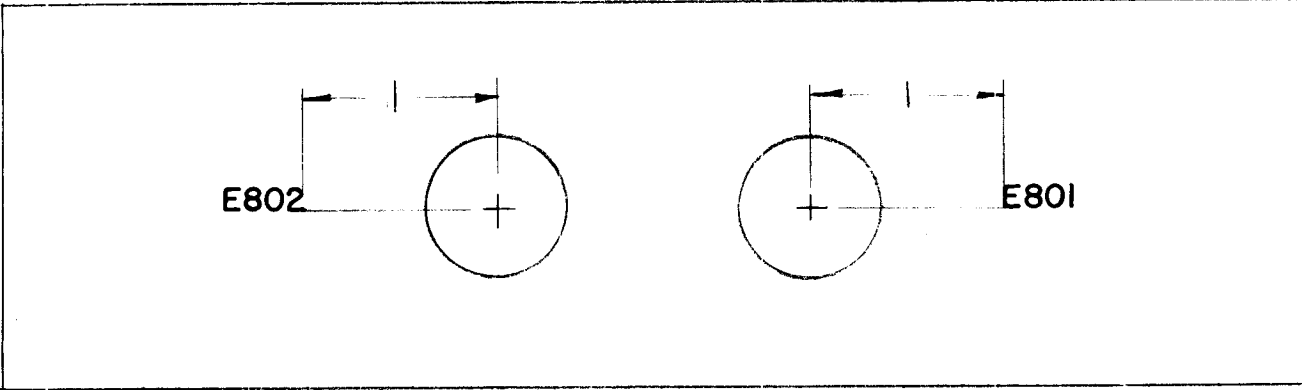
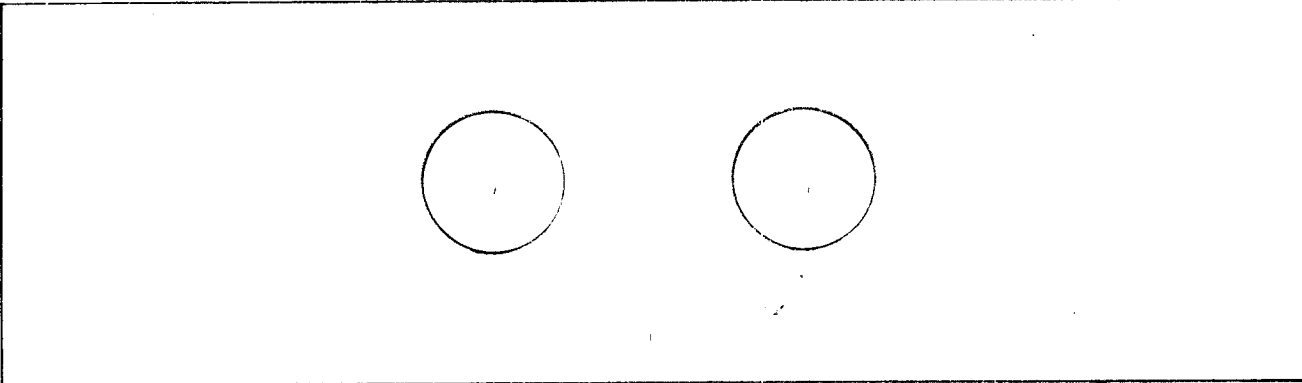


Border & Symbols Must Be Approx. Size Shown. (Black)
 All Lettering to be 3/32" High Black Gothic.
 MARKING PROCESS: AS PER TMC SPECIFICATION S-727.

Ref-2MS-1644

| ISSUE | ITEM | CHAN ED FROM | DATE | CH. NO. | DRAFTS | CHECKER | ENG. APP. | REQ. | ITEM | PART NO. | DESCRIPTION | SYMBOL | |
|----------------|------|--|---------|--------------------|--------|-------------------|-----------|-----------------|------|------------|---|----------------|--|
| C | | C954 RELOCATED | 8/11/65 | 14625 | H.V.V. | JCB | MM | | | | THE TECHNICAL MATERIEL CORP. MAMARONECK, NEW YORK LETTERING, MONITOR BOARD COVER (TI-102) | | |
| B | 1 | C954 ADDED, R917 WAS R903, C910 DELETED | 5-3-65 | 14015 | Ph... | JCB | MM | | | STOCK SIZE | | | |
| A | 1 | R906 WAS L906 | 6-17-60 | 2505 | W | JCB | MM | | | MATERIAL | | | |
| TOLERANCES | | SCALE: FULL | | TYPE & TEMPER | | HEAT TREAT. SPEC. | | DRAWN | | CHECKED | | FINAL APPROVAL | |
| DEC. DIM. ± | | MAXIMUM ALLOWABLE TOLERANCES HAVE BEEN DETERMINED AND ANY DEVIATIONS WILL BE CAUSE FOR REJECTION. REMOVE ALL BURRS AND SHARP EDGES | | FINISH & SPEC. NO. | | ELEC. DES. APP. | | MECH. DES. APP. | | LD-578 | | C | |
| FRAC. DIM. ± | | | | | | | | | | | | | |
| ANGULAR DIM. ± | | | | | | | | | | | | | |

| | | | | | |
|----------------|---------|------------|---------|--------|---|
| REQ. PER. UNIT | USED ON | | | LD-584 | B |
| | MODEL | ASS'Y. NO. | DATE | | |
| 1 | GPT-10K | AR-109 | 5-13-59 | | |



NOTICE TO PERSONS RECEIVING THIS DRAWING

THE TECHNICAL MATERIEL CORPORATION claims proprietary right in the material disclosed hereon. This drawing is issued in confidence for engineering information only and may not be reproduced or used to manufacture anything shown hereon without permission from THE TECHNICAL MATERIEL CORPORATION to the user. This drawing is loaned for mutual assistance and is subject to recall at any time.

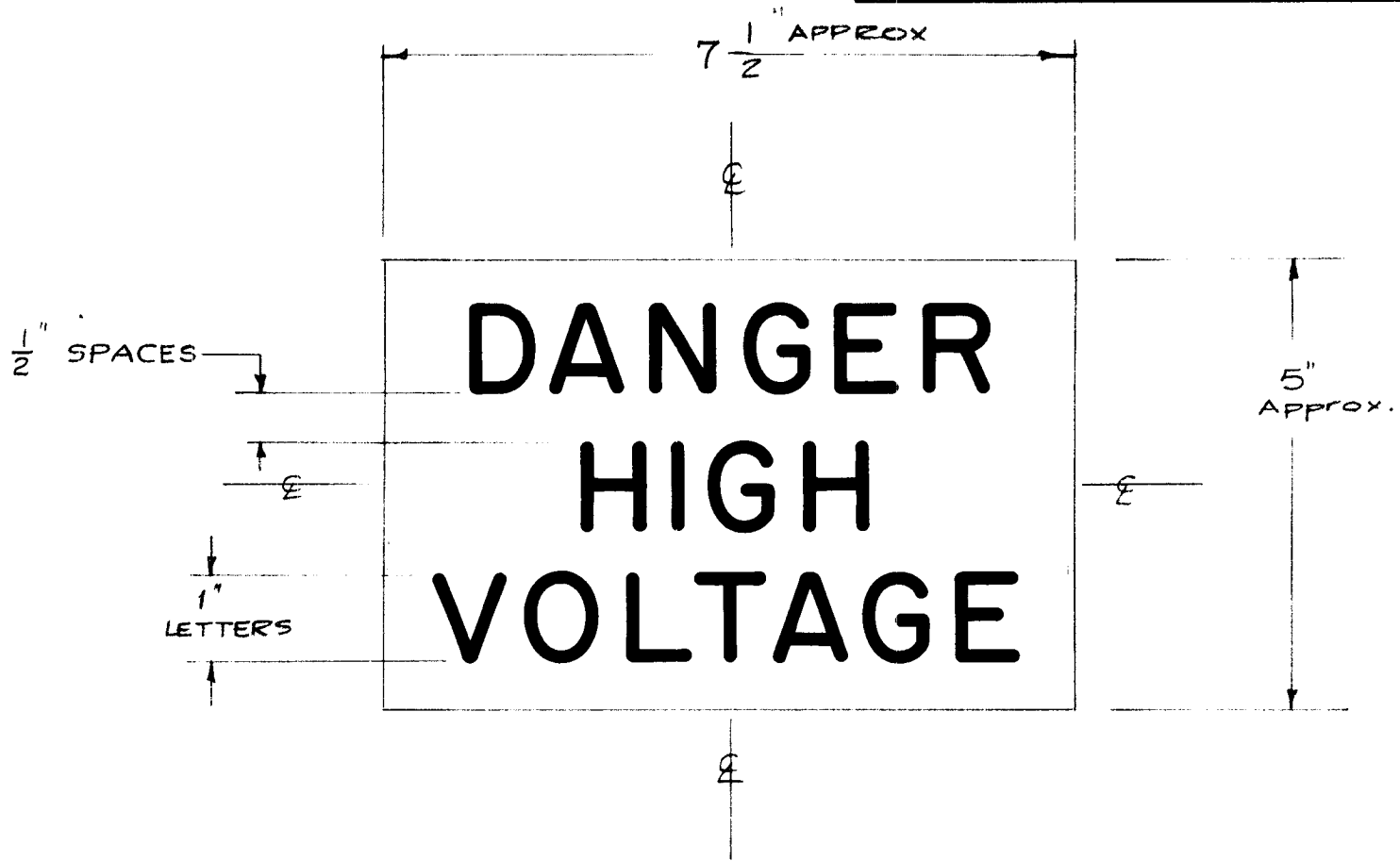
Property of:
THE TECHNICAL MATERIEL CORPORATION
MAMARONECK, NEW YORK

MARKING PROCESS: AS PER
TMC SPEC S-727
LETTERING 1/8 HIGH
BLACK GOTHIC

Ref-1 PX-445

| | | | | | | | REQ. | ITEM | PART NO. | DESCRIPTION | SYMBOL | | | |
|----------------|------|--------------|--|---------|--------|---------|------------------------------|------|-------------------|-----------------------|----------------|----------------|--|--|
| | | | | | | | THE TECHNICAL MATERIEL CORP. | | | | | | | |
| | | | | | | | MAMARONECK, NEW YORK | | | | | | | |
| | | | | | | | LETTERING, CONTACT BUTTON | | | | | | | |
| | | | | | | | TERM. BOARD (AR-109) | | | | | | | |
| ISSUE | ITEM | CHANGED FROM | DATE | CH. NO. | DRAFTS | CHECKER | ENG. APP. | | | 16 ^{5/13/59} | | | | |
| TOLERANCES | | | SCALE: FULL | | | | | | DRAWN | | CHECKED | FINAL APPROVAL | | |
| DEC. DIM. ± | | | MAXIMUM ALLOWABLE TOLERANCES HAVE BEEN DETERMINED AND ANY DEVIATIONS WILL BE CAUSE FOR REJECTION. REMOVE ALL BURRS AND SHARP EDGES | | | | TYPE & TEMPER | | HEAT TREAT. SPEC. | | | | | |
| FRAC. DIM. ± | | | | | | | | | | | | | | |
| ANGULAR DIM. ± | | | | | | | | | | | | | | |
| | | | | | | | FINISH & SPEC. NO. | | ELEC. DES. APP | | MECH. DES. APP | | | |
| | | | | | | | | | LD-584 | | B | | | |

| | | | | |
|----------------------|----------|------------|---------|--------|
| REQ. PER. UNIT | USED ON | | | LD-585 |
| | MODEL | ASS'Y. NO. | DATE | |
| | STANDARD | | 6-14-59 | |



| | | | | | | | | REQ. | ITEM | PART NO. | DESCRIPTION | SYMBOL | | | |
|---|------|--------------|---|---------|--------|---------|-----------|------|------|--------------|--|--------------------|--------------------|--------------------|----------------|
| | | | | | | | | | | | THE TECHNICAL MATERIEL CORP. MAMARONECK, NEW YORK | | | | |
| | | | | | | | | | | STOCK SIZE | STAMP, RUBBER, HIGH VOLTAGE | | | | |
| | | | | | | | | | | Rubber Stamp | | | | | |
| | | | | | | | | | | MATERIAL | | | | | |
| ISSUE | ITEM | CHANGED FROM | DATE | CH. NO. | DRAFTS | CHECKER | ENG. APP. | | | | 16 ⁵ / ₁₄ /59 | <i>[Signature]</i> | | | |
| TOLERANCES | | | SCALE: 1/2 | | | | | | | | | <i>[Signature]</i> | | | |
| DEC. DIM. ± FRAC. DIM. ± ANGULAR DIM. ± | | | MAXIMUM ALLOWABLE TOLERANCES HAVE BEEN DETERMINED AND ANY DEVIATIONS WILL BE CAUSE FOR REJECTION. REMOVE ALL BURRS AND SHARP EDGES | | | | | | | | TYPE & TEMPER | HEAT TREAT. SPEC. | DRAWN | CHECKED | FINAL APPROVAL |
| | | | | | | | | | | | | | <i>[Signature]</i> | <i>[Signature]</i> | LD-585 |
| | | | | | | | | | | | FINISH & SPEC. NO. | | ELEC. DES. APP | | MECH. DES. APP |