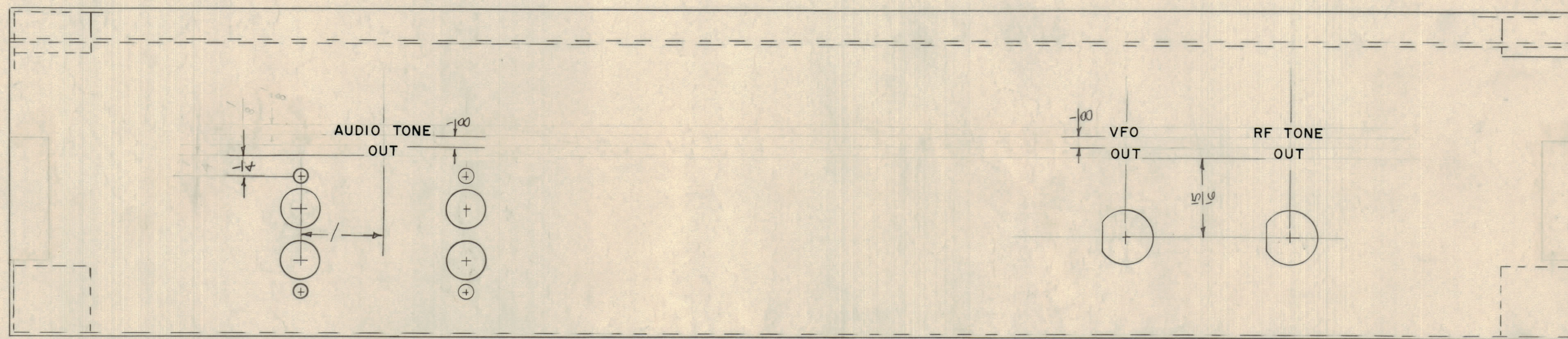


IF IT IS FOUND DESIRABLE TO CHANGE ANY TOLERANCE OR OTHER DETAIL SPECIFIED ON THIS DRAWING NOTIFY THE PURCHASER PROMPTLY.  
 MAXIMUM ALLOWABLE TOLERANCES HAVE BEEN DETERMINED AND DEVIATIONS WILL BE CAUSE FOR REJECTION. REMOVE ALL BURRS AND SHARP EDGES

**NOTICE TO PERSONS RECEIVING THIS DRAWING**

THE TECHNICAL MATERIEL CORPORATION claims proprietary right in the material disclosed hereon. This drawing is issued in confidence for engineering information only and may not be reproduced or used to manufacture anything shown hereon without permission from THE TECHNICAL MATERIEL CORPORATION to the user. This drawing is loaned for mutual assistance and is subject to recall at any time.

Property of:  
 THE TECHNICAL MATERIEL CORPORATION  
 MAMARONECK, NEW YORK



ALL LETTERING 1/8 HIGH GOTHIC, WHITE FILLED.

LD 599 A

A 2 MODEL WAS RAK-7		8-1-61		5390	G.D.L.	
1 KNOCKOUTS DELETED						
ISSUE	ITEM	CHANGED FROM	DATE	CN. NO.	DRAFTS	CHECKER
TOLERANCES		SCALE:				
ALL	DEC. DIM. $\pm$	DRILL PUNCH, COMMERCIAL STOCK				
OTHERS	FRAC. DIM. $\pm$	SIZES AND MANUFACTURERS				
	ANGULAR DIM. $\pm$	TOLERANCES ARE NOT INCLUDED.				

REQ. ITEM				PART NO.				DESCRIPTION				SYMBOL	
								THE TECHNICAL MATERIEL CORP.					
								MAMARONECK, NEW YORK					
STOCK SIZE								ENGRAVING, CENTER FRONT PANEL					
MATERIAL				WEIGHT PER PC.									
TYPE & TEMPER								DRAWN				ELEC. DES. APP.	
								CHECKED				FINAL APPROVAL	
HEAT TREAT. SPEC.												LD-599 A	
FINISH & SPEC. NO.													

1	RAK-7A	PROJECT NO.	ASSY. NO.	8-3-60	DATE
REQ PER UNIT	MODEL	PROJECT NO.	ASSY. NO.	DATE	USED ON