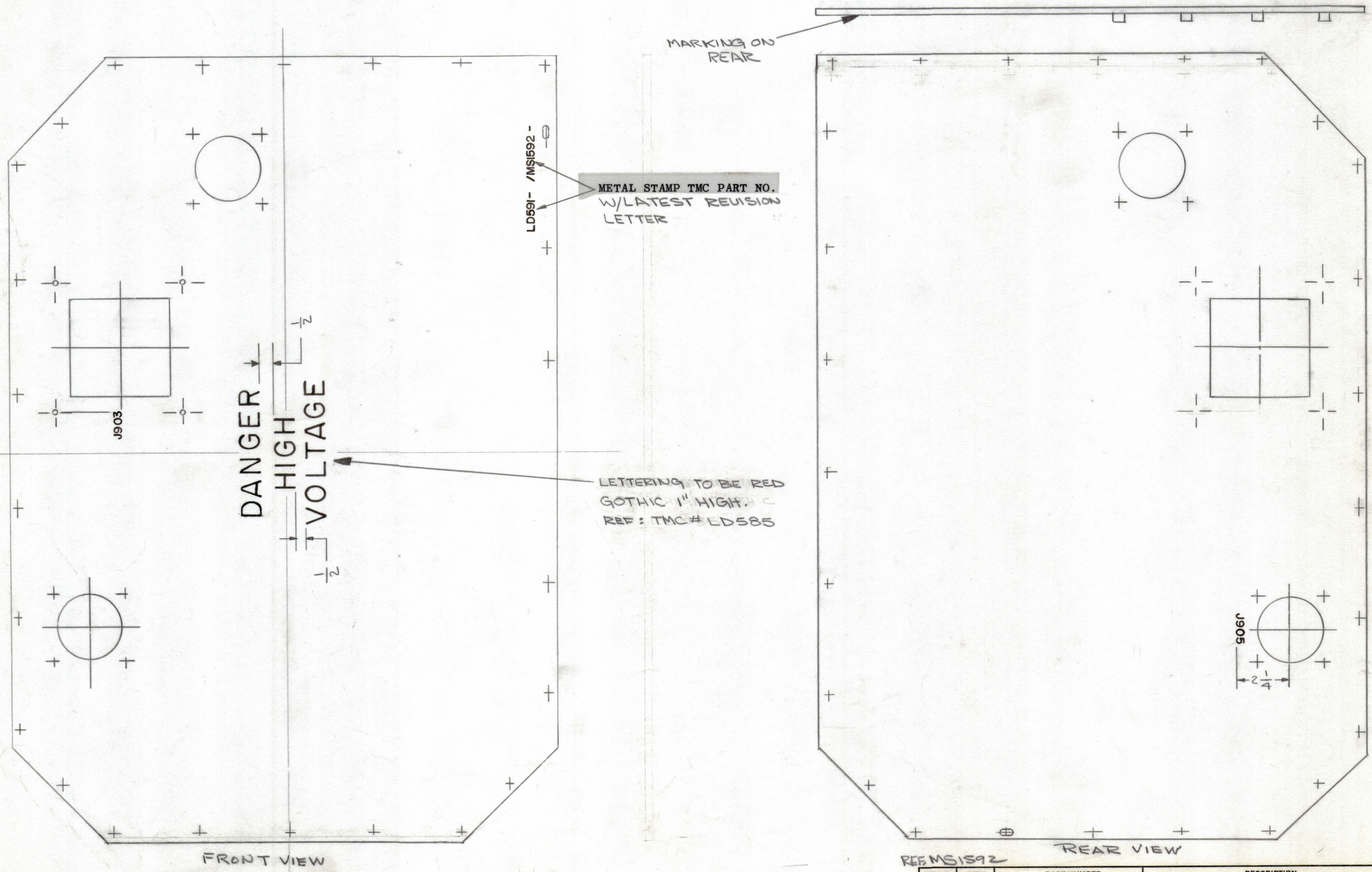


REVISIONS					
ZONE	SYM	DESCRIPTION	DATE	E.M.N. NO.	APPD
B		REDRAWN FROM (2) 8 SIZE SHEETS NO REVISIONS MADE.	9-17-61	#	E



METAL STAMP TMC PART NO.
W/LATEST REVISION
LETTER

LETTERING TO BE RED
GOTHIC 1" HIGH.
REF: TMC # LD585

**DANGER
HIGH
VOLTAGE**

UNLESS OTHERWISE SPECIFIED:
MARKING PROCESS: AS PER TMC SPECIFICATION S-727.
LETTERING: 1/8 HIGH BLACK GOTHIC, LOCATED AS SHOWN
EXCEPT AS NOTED.

REQ'D.	ITEM	PART NUMBER	DESCRIPTION	SYMBOL
LIST OF MATERIAL				
MATERIAL		THE TECHNICAL MATERIEL CORP. MAMARONECK, NEW YORK		
FINISH		TITLE LETTERING, SHIELD, RIGHT SIDE TOP, INSIDE, MAIN FRAME (TI-101)		
DRAWN		DATE	FINAL APPROVAL	DATE
CHECKED		DATE		DATE
ELECT. DES.		DATE		DATE
MECH. DES.		DATE		DATE
DECIMALS		FRACTIONS		
.X ± .05		± 1/64		
.XX ± .01		ANGLES		
.XXX ± .005		± 0° 30'		
TOLERANCES				
UNLESS OTHERWISE SPECIFIED DIMENSIONS ARE IN INCHES AND INCLUDE CHEMICALLY APPLIED OR PLATED FINISHES		DRAWN EAWZA DATE 9-17-61 CHECKED Jde DATE 9/17/61 ELECT. DES. DATE MECH. DES. DATE		
		DATE 9-17-61		DATE 9/17/61
		SHEET		REV. LTR.
		LD-591		B

GPT-10K		ASSY. NO.
Q'TY./UNIT	MODEL USED ON	
SCALE #	CODE	

NOTES