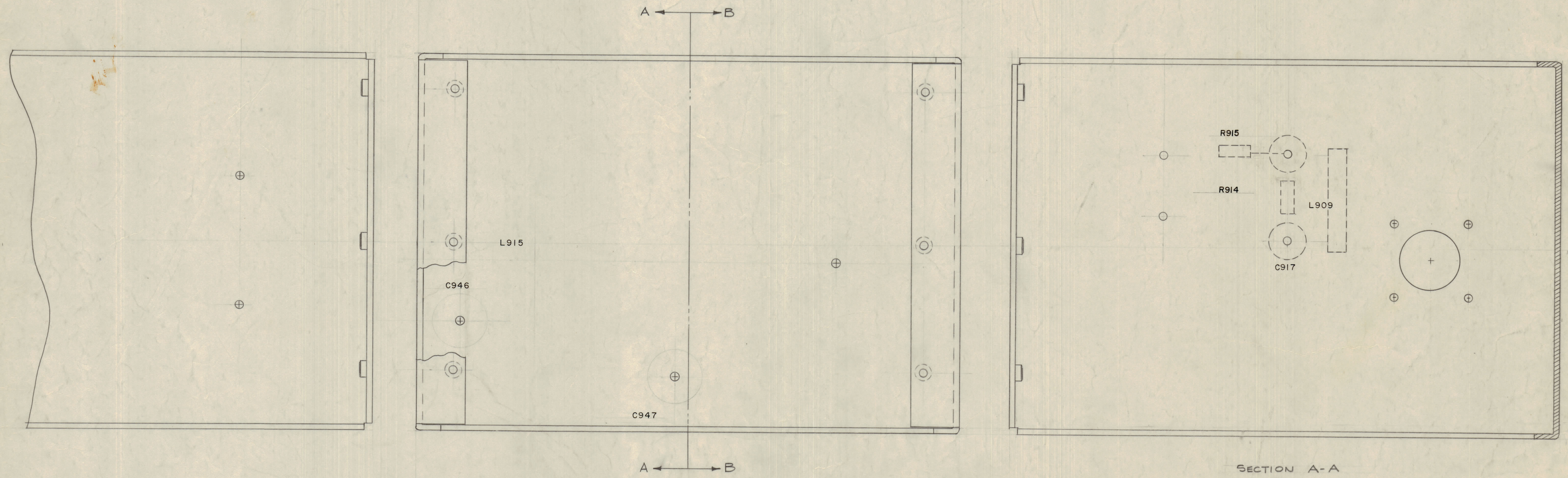


IF IT IS FOUND DESIRABLE TO CHANGE ANY TOLERANCE OR OTHER DETAIL SPECIFIED ON THIS DRAWING NOTIFY THE PURCHASER PROMPTLY.
 MAXIMUM ALLOWABLE TOLERANCES HAVE BEEN DETERMINED AND DEVIATIONS WILL BE CAUSE FOR REJECTION. REMOVE ALL BURRS AND SHARP EDGES.

NOTICE TO PERSONS RECEIVING THIS DRAWING

THE TECHNICAL MATERIEL CORPORATION claims proprietary right in the material disclosed hereon. This drawing is issued in confidence for engineering information only and may not be reproduced or used to manufacture anything shown herein without permission from THE TECHNICAL MATERIEL CORPORATION to the user. This drawing is loaned for mutual assistance and is subject to recall at any time.

Property of:
 THE TECHNICAL MATERIEL CORPORATION
 MAMARONECK, NEW YORK



LD-559 C

SECTION A-A

MARKING PROCESS: AS PER TMC SPECIFICATION S-727
 ALL LETTERING 1/8 HIGH BLACK GOTHIC

C	2	HOLE PATTERN ADDED RIGHT VIEW	7-24-61	5309	R.V	RUI	16
	1	REF. WAS MS-1563					
B	1	R914 & R915 ADDED	8-2-60	2616	CY	904	16
A	1	DELETED C918 (A-A)	5/1/59	988	HG	85	16
ISSUE	ITEM	CHANGED FROM	DATE	DN. NO.	DRAFTS	CHECKER	ENG. APP.
TOLERANCES		SCALE: FULL					
ALL	DEC. DIM. ±	DRILL, PUNCH, COMMERCIAL STOCK					
OTHERS	FRAC. DIM. ±	SIZES AND MANUFACTURERS					
	ANGULAR DIM. ±	TOLERANCES ARE NOT INCLUDED.					

REQ. ITEM		PART NO.		DESCRIPTION		SYMBOL	
				THE TECHNICAL MATERIEL CORP. MAMARONECK, NEW YORK			
STOCK SIZE				LETTERING, PA WRAPAROUND			
MATERIAL		WEIGHT PER PC.		CHASSIS		LT-102	
TYPE & TEMPER		16 5/8 59		ELEC. DES. APP. 86.		MECH. DES. APP.	
HEAT TREAT. SPEC.		DRAWN		CHECKED		FINAL APPROVAL	
1		GPT-10K		AX-137		5-8-59	
REQ PER UNIT		MODEL		PROJECT NO.		DATE	
						LD-559 C	