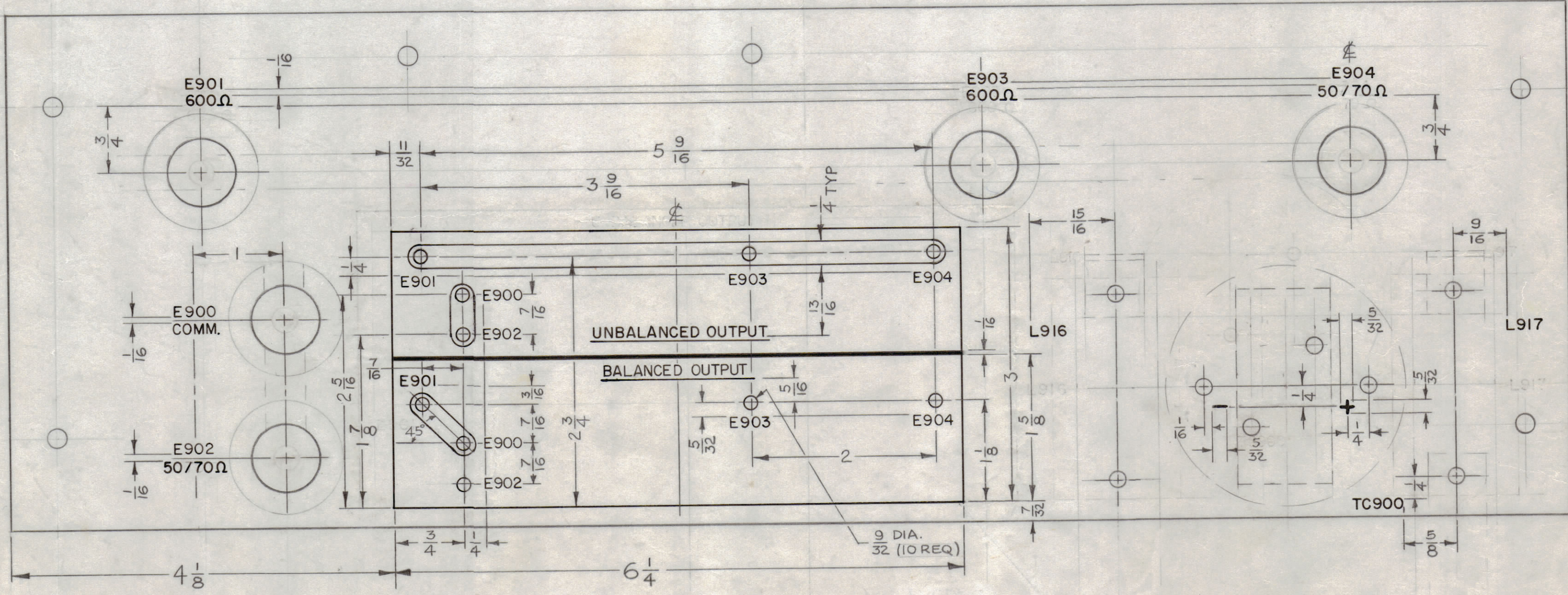


IF IT IS FOUND DESIRABLE TO CHANGE ANY TOLERANCE OR OTHER DETAIL SPECIFIED ON THIS DRAWING NOTIFY THE PURCHASER PROMPTLY.

MAXIMUM ALLOWABLE TOLERANCES HAVE BEEN DETERMINED AND DEVIATIONS WILL BE CAUSE FOR REJECTION. REMOVE ALL BURRS AND SHARP EDGES.



LD-542 D

* UNLESS OTHERWISE SPECIFIED:
 MARKING PROCESS : AS PER TMC SPEC 5-727.
 ALL LETTERING 1/8 WHITE GOTHIC.
 ALL LETTERING CENTERED ON HOLES OR INDICATING LINES.
 LINES-020 WIDE, WHITE.

NOTICE TO PERSONS RECEIVING THIS DRAWING

THE TECHNICAL MATERIEL CORPORATION claims proprietary right in the material disclosed hereon. This drawing is issued in confidence for engineering information only and may not be reproduced or used to manufacture anything shown hereon without permission from THE TECHNICAL MATERIEL CORPORATION to the user. This drawing is loaned for mutual assistance and is subject to recall at any time.

Property of:
 THE TECHNICAL MATERIEL CORPORATION
 MAMARONECK, NEW YORK

Ref- 4PX-452

D	3	TITLE BLOCK MARKING WAS LETT.	5.21.64	11405	AFB	<i>[Signature]</i>	<i>[Signature]</i>
	2	*NOTES ADDED					
	1	DIMENSIONS ADDED					
C	1	E902 & E904 WERE 70Ω	4-8-63	8703	RC	<i>[Signature]</i>	<i>[Signature]</i>
B	1	Added + & - to TC900	11/1/59	1345	16	<i>[Signature]</i>	<i>[Signature]</i>
A	1	Lettering moved to clear components	9/7/59	1247	16	<i>[Signature]</i>	<i>[Signature]</i>
ISSUE	ITEM	CHANGED FROM	DATE	CH. NO.	DRAFTS	CHECKER	ENG. APP.
TOLERANCES		SCALE:					
ALL OTHERS	DEC. DIM. ±	DRILL, PUNCH, COMMERCIAL STOCK SIZES AND MANUFACTURERS TOLERANCES ARE NOT INCLUDED.					
	FRAC. DIM. ±						
	ANGULAR DIM. ±						

1	GPT-10K	7-1-62	AT-100	5-11-59
REQ. PER UNIT	MODEL	PROJECT NO.	ASSY. NO.	DATE
USED ON				

REQ. ITEM	PART NO.	DESCRIPTION	SYMBOL
		THE TECHNICAL MATERIEL CORP. MAMARONECK, NEW YORK	
STOCK SIZE		MARKING, ANTENNA TUNER	
MATERIAL		TERMINAL BOARD (AT-100)	
WEIGHT PER PC.		P. IORILLO	
TYPE & TEMPER.		DRAWN	ELEC. DES. APP.
HEAT TREAT. SPEC.		CHECKED	MECH. DES. APP.
SEE NOTE*		FINAL APPROVAL	
FINISH & SPEC. NO.		LD-542 D	