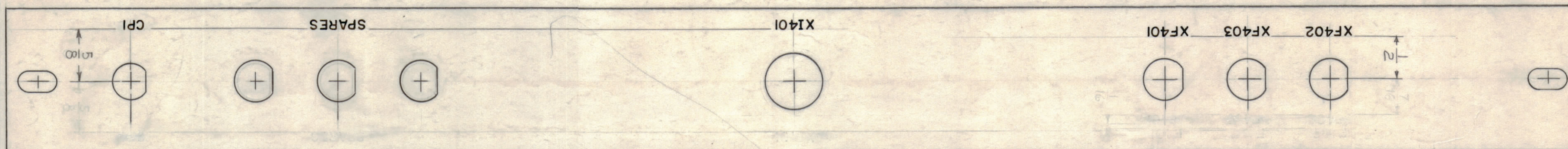
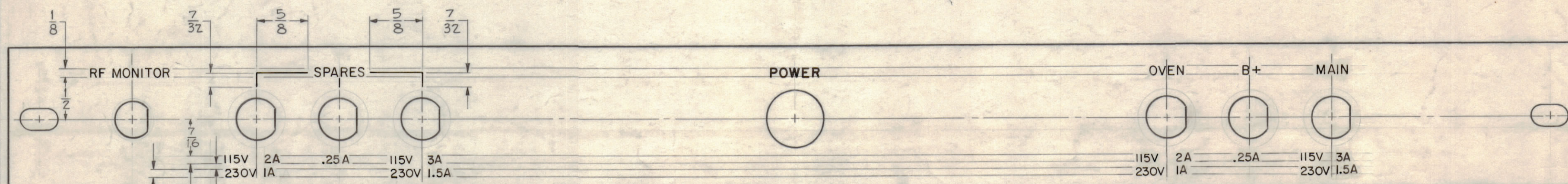


IF IT IS FOUND DESIRABLE TO CHANGE ANY TOLERANCE OR OTHER DETAIL SPECIFIED ON THIS DRAWING NOTIFY THE PURCHASER PROMPTLY.

MAXIMUM ALLOWABLE TOLERANCES HAVE BEEN DETERMINED AND DEVIATIONS WILL BE CAUSE FOR REJECTION. REMOVE ALL BURRS AND SHARP EDGES.



REAR VIEW



FRONT VIEW

LD-534 D

NOTES:  
 FRONT VIEW TO BE ENGRAVED.  
 REAR VIEW TO BE SILK-SCREENED.

NOTES:  
 ENGRAVING NOTES:(FRONT VIEW)  
 1~ ENGRAVING TO BE GOTHIC, WHITE FILLED, SIZES SHOWN ON CHART.  
 2~ ALL LINES TO BE WHITE FILLED.  
 3~ ALL LETTER AND NUMERAL GROUPS TO BE CENTERED ON HOLES.

SILK SCREEN NOTES:(REAR VIEW)  
 1~ LETTERING TO BE 1/8 HIGH BLACK GOTHIC.  
 2~ ALL LETTERING TO BE CENTERED ON HOLES AS SHOWN.

HEIGHT OF LETTER	DEPTH OF STROKE	WIDTH OF STROKE
3/32	.010	.015
1/8	.010	.020
LINES	.010	.015

REF ~ TMC DWG NO. ~ MS-1719

ISSUE	ITEM	CHANGED FROM	DATE	CH. NO.	DRAFTS	CHECKER	ENG. APP.
D	1	ON REAR VIEW LETTERING RELOCATED	7-21-61	5319	GDL	C.W.	J.M.
C	3	ON FRONT LETTERING POWER ADDED	4-22-61	4761	J.M.F.	J.C.B.	J.M.
	2	ON REAR LETTERING, CPI ADDED	4-22-61	4761	J.M.F.	J.C.B.	J.M.
B	1	ON REAR LETTERING, X1401 RELOCATED	4-7-61	4584	J.M.F.	J.C.B.	J.M.
	1	REAR VIEW LETTERING ADDED	4-7-61	4584	J.M.F.	J.C.B.	J.M.
A	5	.25A WAS ZA	5/6/59	957	J.C.	J.C.B.	J.M.
	4	230V 1.5A WAS 230V ZSA	5/6/59	957	J.C.	J.C.B.	J.M.
	3	115V 3A WAS 115V 5A	5/6/59	957	J.C.	J.C.B.	J.M.
	2	230V 1A WAS 230V 1.5A	5/6/59	957	J.C.	J.C.B.	J.M.
	1	115V ZA WAS 115V 2A	5/6/59	957	J.C.	J.C.B.	J.M.

NOTICE TO PERSONS RECEIVING THIS DRAWING

THE TECHNICAL MATERIEL CORPORATION claims proprietary right in the material disclosed hereon. This drawing is issued in confidence for engineering information only and may not be reproduced or used to manufacture anything shown hereon without permission from THE TECHNICAL MATERIEL CORPORATION to the user. This drawing is loaned for mutual assistance and is subject to recall at any time.

Property of:  
 THE TECHNICAL MATERIEL CORPORATION  
 MAMARONECK, NEW YORK

REQ. ITEM	PART NO.	DESCRIPTION	SYMBOL
		THE TECHNICAL MATERIEL CORP. MAMARONECK, NEW YORK	
STOCK SIZE		ENGRAVING, FRONT PANEL (MODEL ~ RTS-2)	
MATERIAL	WEIGHT PER PC.	JOHN C. BIELE	
TYPE & TEMPER	DRAWN	ELEC. DES. APP.	MECH. DES. APP.
HEAT TREAT. SPEC.	CHECKED	FINAL APPROVAL	
FINISH & SPEC. NO.			

1	RTS-2	4-17-59
REQ. PER UNIT	MODEL	PROJECT NO.
	ASSY. NO.	DATE
USED ON		

LD-534 D