

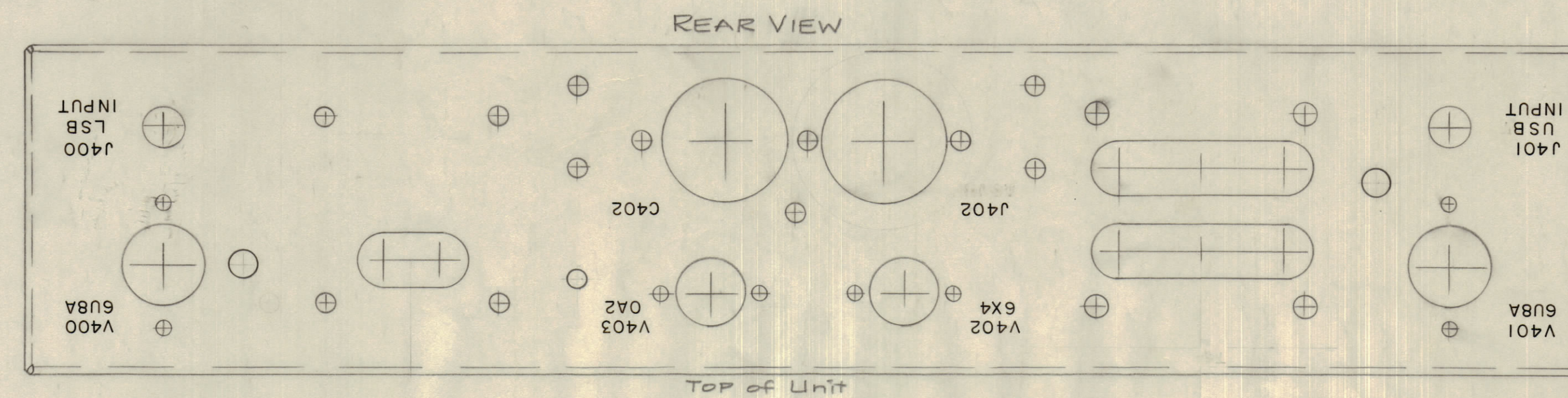
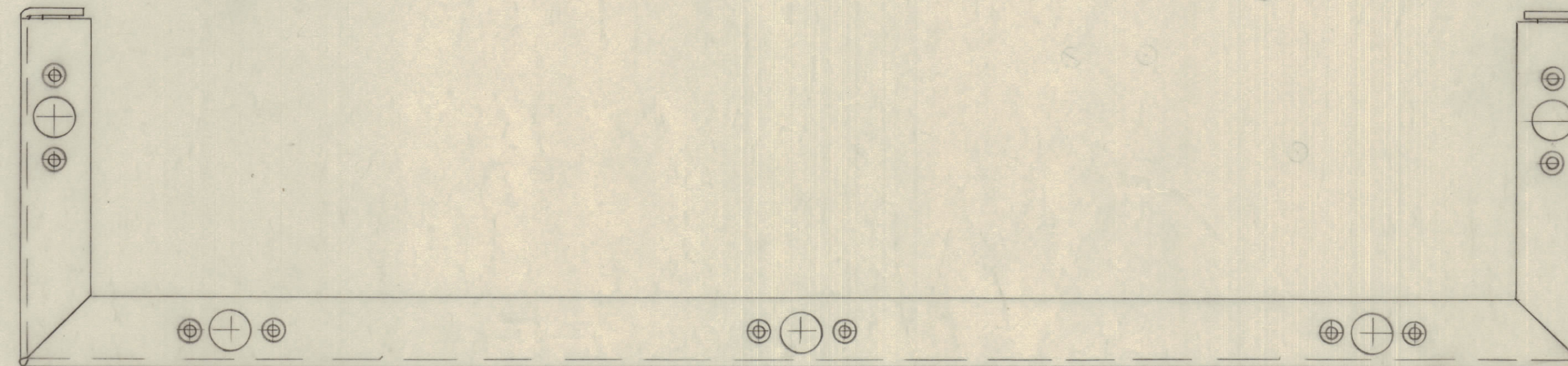
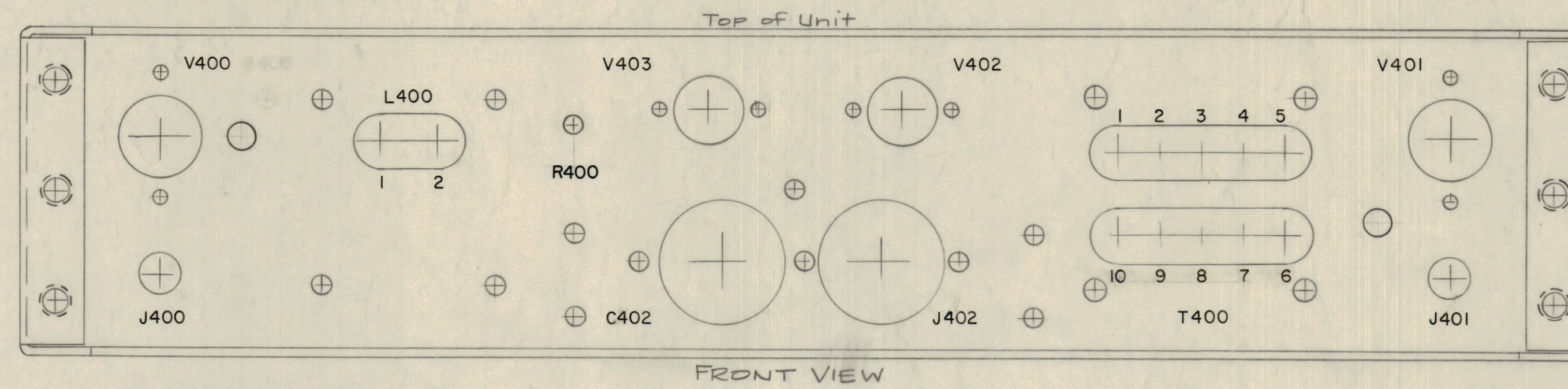
IF IT IS FOUND DESIRABLE TO CHANGE ANY TOLERANCE OR OTHER DETAIL SPECIFIED ON THIS DRAWING NOTIFY THE PURCHASER PROMPTLY.

MAXIMUM ALLOWABLE TOLERANCES HAVE BEEN DETERMINED AND DEVIATIONS WILL BE CAUSE FOR REJECTION. REMOVE ALL BURRS AND SHARP EDGES

NOTICE TO PERSONS RECEIVING THIS DRAWING

THE TECHNICAL MATERIEL CORPORATION claims proprietary right in the material disclosed herein. This drawing is issued in confidence for engineering information only and may not be reproduced or used to manufacture anything shown hereon without permission from THE TECHNICAL MATERIEL CORPORATION to the user. This drawing is loaned for mutual assistance and is subject to recall at any time.

Property of:
THE TECHNICAL MATERIEL CORPORATION
MAMARONECK, NEW YORK



All lettering to be 1/8 high black Gothic.

MARKING PROCESS: AS PER T.M.C SPECIFICATION S-727

LD-509 B

B	1	R400 RELOCATED	5-9-61	JCB	J.C.B.	15	
A	1	Stamping changed on 1-2-61	3/2/61	J.C.B.	J.C.B.	15	
ISSUE	ITEM	CHANGED FROM	DATE	CH. NO.	DRAFTS	CHECKER	ENG. APP.
TOLERANCES		SCALE: FULL					
ALL	OTHERS	DEC. DIM. ± 1/64 FRAC. DIM. ± 1/64 ANGULAR DIM. ±	DRILL PUNCH, COMMERCIAL STOCK SIZES AND MANUFACTURERS TOLERANCES ARE NOT INCLUDED.				

1	SLM	P/O GPT 10K	2-17-59
REQ PER UNIT	MODEL	PROJECT NO.	DATE
		ASSY. NO.	
		USED ON	

Ref: 8MS-1573 CHASSIS

REQ. ITEM	PART NO.	DESCRIPTION	SYMBOL
THE TECHNICAL MATERIEL CORP. MAMARONECK, NEW YORK			
STOCK SIZE			
LETTERING, CHASSIS			
MATERIAL WEIGHT PER PC.			
SIDE BAND LEVEL MONITOR			
TYPE & TEMPER			
DRAWN		ELEC. DES. APP.	MECH. DES. APP.
HEAT TREAT. SPEC.		CHECKED	FINAL APPROVAL
			LD-509 B
FINISH & SPEC. NO.			