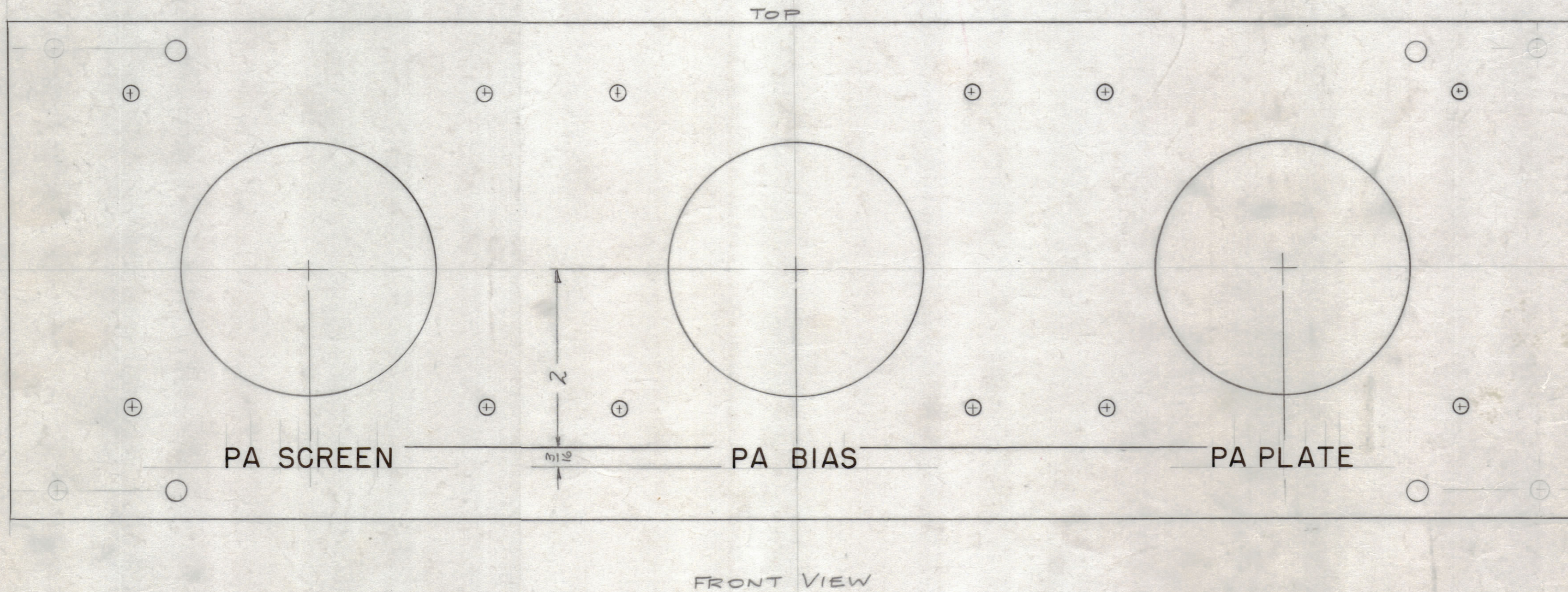


IF IT IS FOUND DESIRABLE TO CHANGE ANY TOLERANCE OR OTHER DETAIL SPECIFIED ON THIS DRAWING NOTIFY THE PURCHASER PROMPTLY.

MAXIMUM ALLOWABLE TOLERANCES HAVE BEEN DETERMINED AND DEVIATIONS WILL BE CAUSE FOR REJECTION. REMOVE ALL BURRS AND SHARP EDGES.



LD 505 B

NOTE - ENGRAVING TO BE WHITE FILLED
 GOTHIC,
 LETTER HEIGHT - 3/16
 DEPTH OF STROKE - .010
 WIDTH OF STROKE - .025

NOTICE TO PERSONS RECEIVING THIS DRAWING

THE TECHNICAL MATERIEL CORPORATION claims proprietary right in the material disclosed hereon. This drawing is issued in confidence for engineering information only and may not be reproduced or used to manufacture anything shown hereon without permission from THE TECHNICAL MATERIEL CORPORATION to the user. This drawing is loaned for mutual assistance and is subject to recall at any time.

Property of:

THE TECHNICAL MATERIEL CORPORATION
 MAMARONECK, NEW YORK

LD-548(4) Lettering, Rear
 REF - TMC # PX-450 (8) MACH.

| B | ADD SHEET 1 OF 2 SEE SHEET 2 | 1-9-67 | 11656 | RME | OCB | OCB | |
|----------------|---|---|-------|---------|--------|---------|-----------|
| A | "ENGRAVING" WAS "LETTERING" - NOTE ADD | 5/4/59 | - 16 | JDC | JDC | JDC | |
| ISSUE | ITEM | CHANGED FROM | DATE | CH. NO. | DRAFTS | CHECKER | ENG. APP. |
| TOLERANCES | | SCALE: | | | | | |
| ALL DIMENSIONS | DEC. DIM. ± FRAC. DIM. ± ANGULAR DIM. ± | DRILL, PUNCH, COMMERCIAL STOCK SIZES AND MANUFACTURERS TOLERANCES ARE NOT INCLUDED. | | | | | |

| 1 | GPT-10K | AX-107 | | 2-10-59 |
|---------------|---------|-------------|-----------|---------|
| REQ. PER UNIT | MODEL | PROJECT NO. | ASSY. NO. | DATE |
| USED ON | | | | |

| REQ. ITEM | PART NO. | DESCRIPTION | SYMBOL |
|---|----------------|---------------------------|---------------------------------|
| THE TECHNICAL MATERIEL CORP. MAMARONECK, NEW YORK | | | |
| STOCK SIZE | | ENGRAVING, METER PANEL, L | |
| MATERIAL | WEIGHT PER PC. | AUX. FRAME | AX-107 |
| TYPE & TEMPER | | DRAWN | ELEC. DES. APP. MECH. DES. APP. |
| HEAT TREAT. SPEC. | | CHECKED | FINAL APPROVAL |
| FINISH & SPEC. NO. | | LD 505 B SHEET 1 OF 2 | |

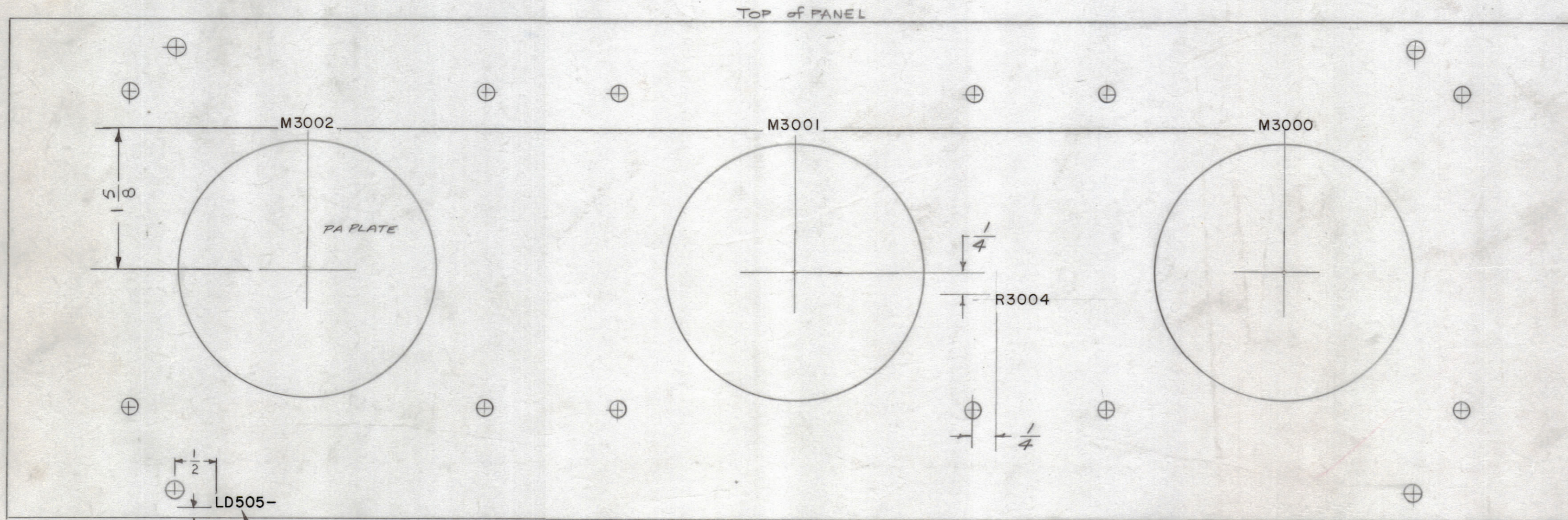
IF IT IS FOUND DESIRABLE TO CHANGE ANY TOLERANCE OR OTHER DETAIL SPECIFIED ON THIS DRAWING NOTIFY THE PURCHASER PROMPTLY.

MAXIMUM ALLOWABLE TOLERANCES HAVE BEEN DETERMINED AND DEVIATIONS WILL BE CAUSE FOR REJECTION. REMOVE ALL BURRS AND SHARP EDGES.

NOTICE TO PERSONS RECEIVING THIS DRAWING

THE TECHNICAL MATERIEL CORPORATION claims proprietary right in the material disclosed hereon. This drawing is issued in confidence for engineering information only and may not be reproduced or used to manufacture anything shown hereon without permission from THE TECHNICAL MATERIEL CORPORATION to the user. This drawing is loaned for mutual assistance and is subject to recall at any time.

Property of:
THE TECHNICAL MATERIEL CORPORATION
MAMARONECK, NEW YORK



LD 505 B

MARK TMC PART NO.
1/8 HIGH GOTHIC W/LATEST
REVISION LETTER.

MARKING PROCESS: AS PER TMC SPEC S-727
All lettering 1/8 High White Gothic.

4 LD-505 - Engr.
Ref- 4 PX-450 - mach.

| B | ADD PART NO. MARKING AND "SHEET 2 OF 2" SEE SHEET 1 OF 2 | 1-10-67 | 17656 | RME | qcf | qcf | |
|------------|--|---|-------|---------|--------|---------|-----------|
| A | SEE SHEET 1 OF 2 | 5/4/59 | | | | | |
| ISSUE | ITEM | CHANGED FROM | DATE | CH. NO. | DRAFTS | CHECKER | ENG. APP. |
| TOLERANCES | | SCALE: FULL | | | | | |
| ALL OTHERS | DEC. DIM. ± FRAC. DIM. ± ANGULAR DIM. ± | DRILL, PUNCH, COMMERCIAL STOCK SIZES AND MANUFACTURERS TOLERANCES ARE NOT INCLUDED. | | | | | |

| 1 | GPT-10K | AX-107 | 5-4-59 | |
|---------------|---------|-------------|-----------|------|
| REQ. PER UNIT | MODEL | PROJECT NO. | ASSY. NO. | DATE |
| | | | | |

| REQ. ITEM | PART NO. | DESCRIPTION | SYMBOL |
|--|----------|----------------------|---------------------------------|
| THE TECHNICAL MATERIEL CORP. MAMARONECK, NEW YORK | | | |
| STOCK SIZE | | | |
| LETTERING, METER PANEL, | | | |
| MATERIAL | | WEIGHT PER PC. | |
| REAR | | AX-107 | |
| TYPE & TEMPER | | 16 ^{5/4/59} | 6.6. |
| HEAT TREAT. SPEC. | | DRAWN | ELEC. DES. APP. MECH. DES. APP. |
| FINISH & SPEC. NO. | | CHECKED | FINAL APPROVAL |
| | | | LD 505 B |