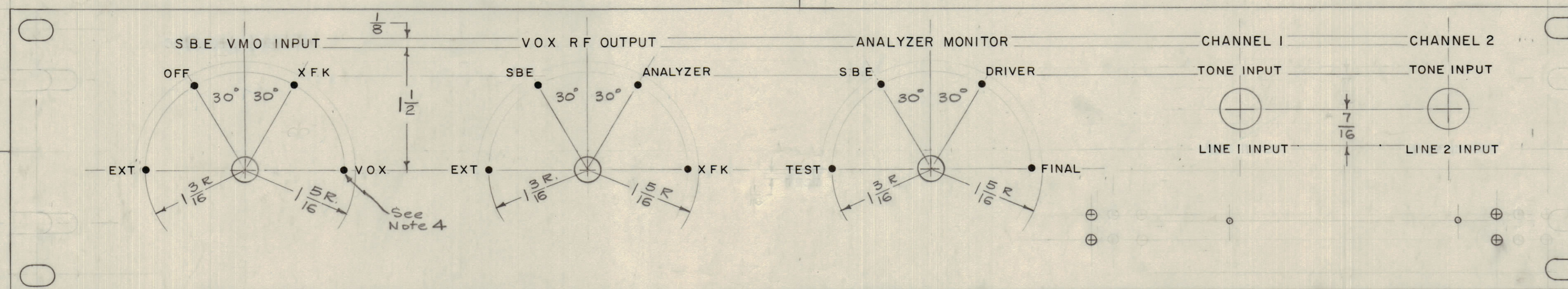


IF IT IS FOUND DESIRABLE TO CHANGE ANY TOLERANCE OR OTHER DETAIL SPECIFIED ON THIS DRAWING NOTIFY THE PURCHASER PROMPTLY.  
 MAXIMUM ALLOWABLE TOLERANCES HAVE BEEN DETERMINED AND DEVIATIONS WILL BE CAUSE FOR REJECTION. REMOVE ALL BURRS AND SHARP EDGES



FRONT VIEW

- NOTES-
1. ALL LETTERING TO BE GOTHIC.
  2. " " " " 3/32 HIGH, UNLESS OTHERWISE SPECIFIED.
  3. ALL ENGRAVING TO BE WHITE FILLED.
  4. ALL DOTS TO BE 1/16 DIAM.

| LETTER HEIGHT | DEPTH OF STROKE | WIDTH OF STROKE |
|---------------|-----------------|-----------------|
| 3/32          | .010            | .015            |
| 1/8           | .010            | .020            |
| DOTS          | .010            | —               |

NOTICE TO PERSONS RECEIVING THIS DRAWING

THE TECHNICAL MATERIEL CORPORATION claims proprietary right in the material disclosed herein. This drawing is issued in confidence for engineering information only and may not be reproduced or used to manufacture anything shown herein without permission from THE TECHNICAL MATERIEL CORPORATION to the user. This drawing is loaned for mutual assistance and is subject to recall at any time.

Property of:  
 THE TECHNICAL MATERIEL CORPORATION  
 MAMARONECK, NEW YORK

|            |                                                        |                                                                                     |      |         |        |         |           |
|------------|--------------------------------------------------------|-------------------------------------------------------------------------------------|------|---------|--------|---------|-----------|
| B 1        | "LINE 1 INPUT" & "LINE 2 INPUT" Both were "LINE INPUT" | 2/24/59                                                                             | 826  | 16      | BWB    | AMB     |           |
| A 1        | 1-1/2 DIM. WAS 1-1/4 (ERROR)                           | 2/19/59                                                                             | 803  | 16      | JA     | JA      |           |
| ISSUE ITEM |                                                        | CHANGED FROM                                                                        | DATE | CN. NO. | DRAFTS | CHECKER | ENG. APP. |
| TOLERANCES |                                                        | SCALE: 1/16"                                                                        |      |         |        |         |           |
| ALL OTHERS | DEC. DIM. ±<br>FRAC. DIM. ±<br>ANGULAR DIM. ±          | DRILL, PUNCH, COMMERCIAL STOCK SIZES AND MANUFACTURERS TOLERANCES ARE NOT INCLUDED. |      |         |        |         |           |

Ref-4MS-1526

| REQ. ITEM | PART NO. | DESCRIPTION                                          | SYMBOL   |
|-----------|----------|------------------------------------------------------|----------|
|           |          | THE TECHNICAL MATERIEL CORP.<br>MAMARONECK, NEW YORK |          |
|           |          | ENGRAVING, FRONT PANEL (MCP)                         |          |
|           |          | MONITOR CONTROL PANEL                                |          |
|           |          | TYPE & TEMPER                                        | 16/29/59 |
|           |          | DRAWN                                                | BWB      |
|           |          | ELEC. DES. APP.                                      | JA       |
|           |          | MECH. DES. APP.                                      | JA       |
|           |          | CHECKED                                              | AMB      |
|           |          | FINAL APPROVAL                                       |          |
|           |          |                                                      | LD-503 B |

|                    |       |             |           |      |        |
|--------------------|-------|-------------|-----------|------|--------|
| 1                  | MCP   | PROJECT NO. | ASSY. NO. | DATE | 2-9-59 |
| REQ PER UNIT       | MODEL | PROJECT NO. | ASSY. NO. | DATE |        |
| USED ON            |       |             |           |      |        |
| FINISH & SPEC. NO. |       |             |           |      |        |