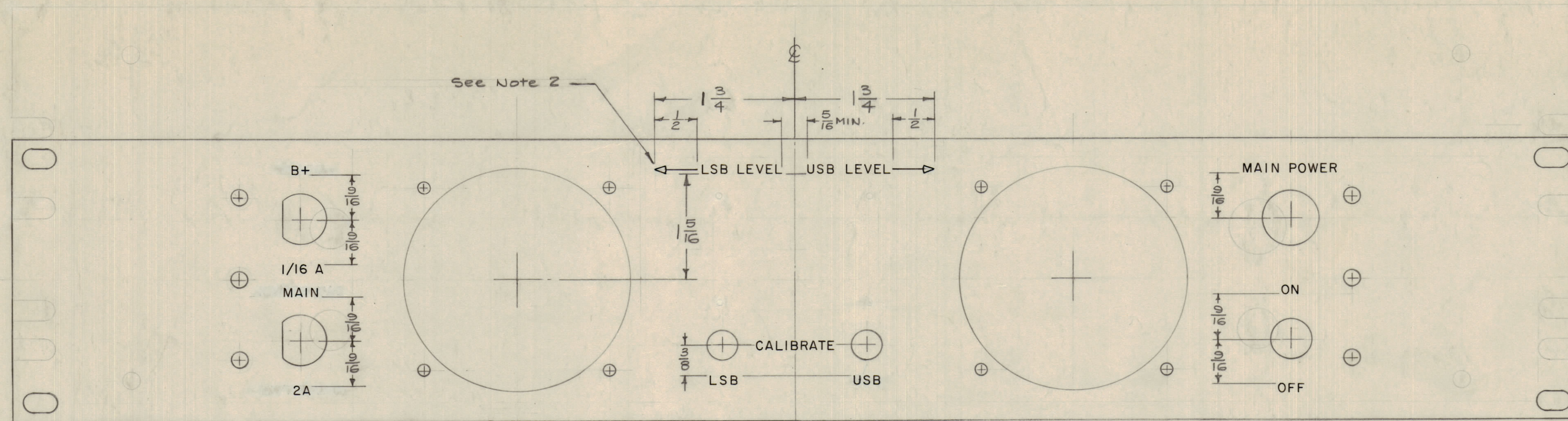


IF IT IS FOUND DESIRABLE TO CHANGE ANY TOLERANCE OR OTHER DETAIL SPECIFIED ON THIS DRAWING NOTIFY THE PURCHASER PROMPTLY.
 MAXIMUM ALLOWABLE TOLERANCES HAVE BEEN DETERMINED AND DEVIATIONS WILL BE CAUSE FOR REJECTION. REMOVE ALL BURRS AND SHARP EDGES

NOTICE TO PERSONS RECEIVING THIS DRAWING

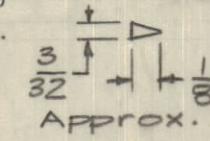
THE TECHNICAL MATERIEL CORPORATION claims proprietary right in the material disclosed herein. This drawing is issued in confidence for engineering information only and may not be reproduced or used to manufacture anything shown herein without permission from THE TECHNICAL MATERIEL CORPORATION to the user. This drawing is loaned for mutual assistance and is subject to recall at any time.

Property of:
 THE TECHNICAL MATERIEL CORPORATION
 MAMARONECK, NEW YORK



NOTES:

1. All Lettering to be 1/8" high, .010 Stroke Depth, .020 Stroke Width, White Filled Gothic
2. Arrowhead to be as shown. White Filled Lines.



LD-502

ISSUE	ITEM	CHANGED FROM	DATE	CN. NO.	DRAFTS	CHECKER	ENG. APP.
TOLERANCES		SCALE: <i>DO NOT SCALE</i>					
ALL	DEC. DIM. ±	DRILL, PUNCH, COMMERCIAL STOCK					
OTHERS	FRAC. DIM. ± 1/64	SIZES AND MANUFACTURERS					
	ANGULAR DIM. ±	TOLERANCES ARE NOT INCLUDED.					

1	SLM	P/O GPT-10K		2-10-59
REQ PER UNIT	MODEL	PROJECT NO.	ASS'Y. NO.	DATE
USED ON				

Ref- BMS-1525

REQ. ITEM	PART NO.	DESCRIPTION	SYMBOL
THE TECHNICAL MATERIEL CORP. MAMARONECK, NEW YORK			
STOCK SIZE			
ENGRAVING, FRONT PANEL,			
MATERIAL WEIGHT PER PC. SIDEBAND LEVEL MONITOR			
TYPE & TEMPER VG			
DRAWN <i>HJ</i>		ELEC. DES. APP. <i>AKB</i>	MECH. DES. APP. <i>AKB</i>
HEAT TREAT. SPEC.		CHECKED	FINAL APPROVAL
			LD-502
FINISH & SPEC. NO.			