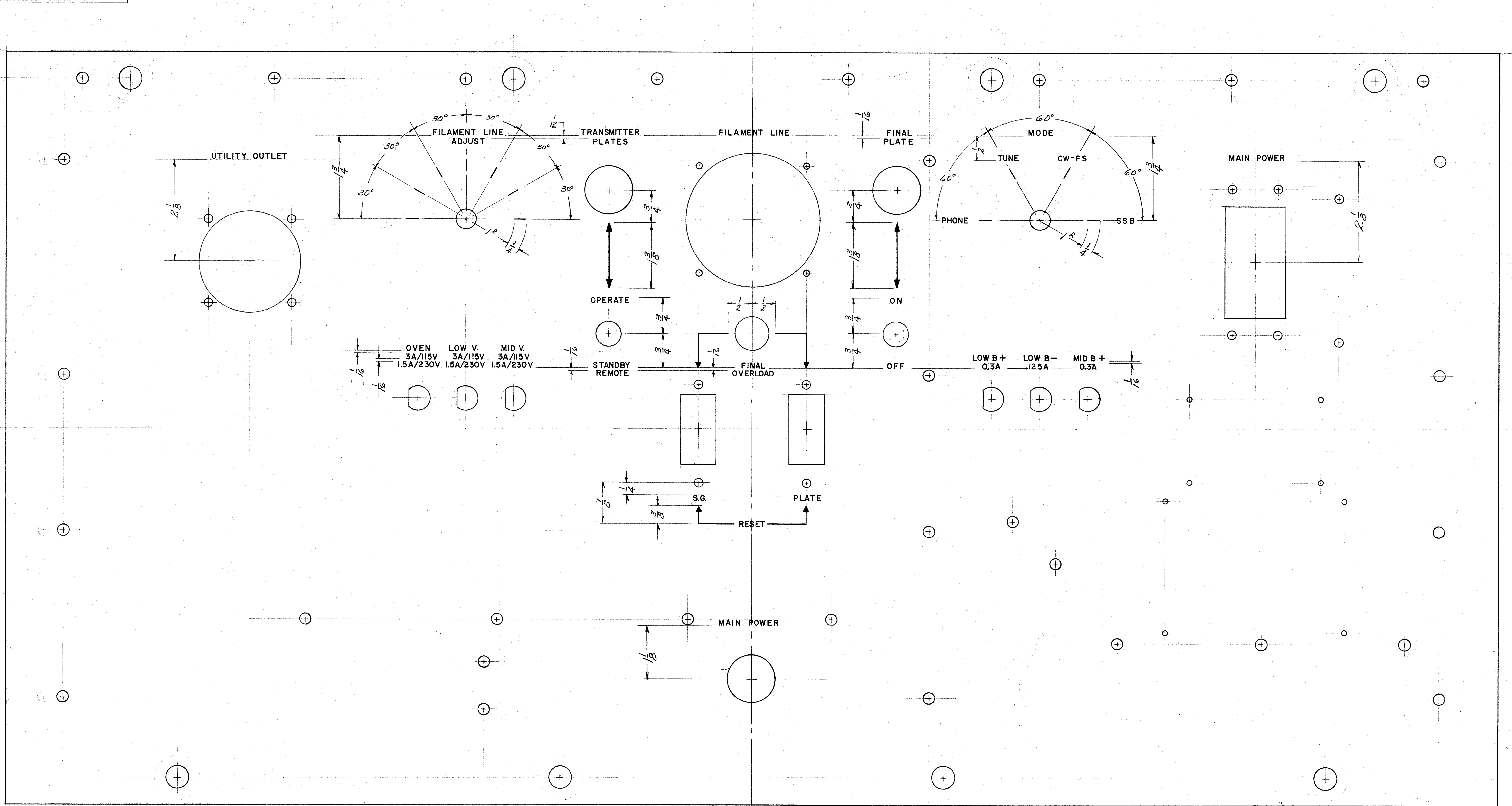


IF IT IS FOUND DESIRABLE TO CHANGE ANY TOLERANCE OR OTHER DETAIL SPECIFIED ON THIS DRAWING NOTIFY THE PURCHASER PROMPTLY.
 MAXIMUM ALLOWABLE TOLERANCES HAVE BEEN DETERMINED AND DEVIATIONS WILL BE CAUSE FOR REJECTION. REMOVE ALL BURRS AND SHARP EDGES



LD 451 A

NOTICE TO PERSONS RECEIVING THIS DRAWING
 THE TECHNICAL MATERIEL CORPORATION claims proprietary right in the material disclosed hereon. This drawing is issued in confidence for engineering information only and may not be reproduced or used to manufacture anything shown hereon without permission from THE TECHNICAL MATERIEL CORPORATION to the user. This drawing is loaned for mutual assistance and is subject to recall at any time.

NOTE:
 ENGRAVING TO BE GOTHIC WHITE FILLED
 LETTER HEIGHT .5732
 STROKE DEPTH .010
 STROKE WIDTH .020

Property of:
 THE TECHNICAL MATERIEL CORPORATION
 MAMARONECK, NEW YORK

REF: TMC * MS-1351 (B)

ISSUE	ITEM	CHANGED FROM	DATE	EN. NO.	DRAFTS	CHECKER	ENG. APP.
A		ADD SH. 10F2 TO TITLE BLK	11/17/2006	GE	Q	PEA	
TOLERANCES							
ALL OTHERS	DEC. DIM. ±	FRAC. DIM. ±	ANGULAR DIM. ±	DRILL PUNCH, COMMERCIAL STOCK SIZES AND MANUFACTURERS TOLERANCES ARE NOT INCLUDED.			

1	RTP-2	PROJECT NO.	10-14-53	DATE
REQ PER UNIT	MODEL	ASSY. NO.	USED ON	

REQ. ITEM	PART NO.	DESCRIPTION	SYMBOL
		THE TECHNICAL MATERIEL CORP. MAMARONECK, NEW YORK	
		FRONT PANEL ENGRAVING	
		RTP-2	
		TYPE & TEMPER	
		HEAT TREAT. SPEC.	
		FINISH & SPEC. NO.	

LD 451
 SHEET 1 OF 2