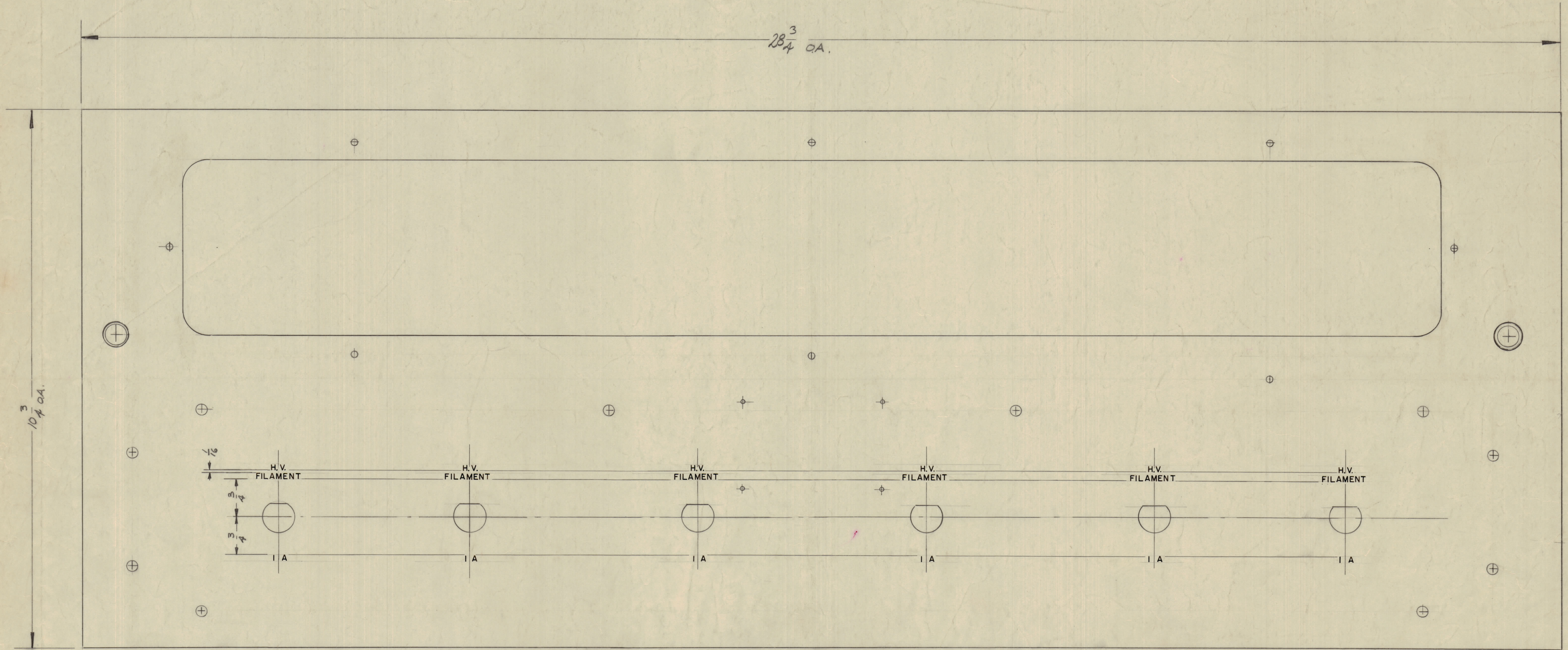


IF IT IS FOUND DESIRABLE TO CHANGE ANY TOLERANCE OR OTHER DETAIL SPECIFIED ON THIS DRAWING NOTIFY THE PURCHASER PROMPTLY.
 MAXIMUM ALLOWABLE TOLERANCES HAVE BEEN DETERMINED AND DEVIATIONS WILL BE CAUSE FOR REJECTION. REMOVE ALL BURRS AND SHARP EDGES



NOTES: ALL LETTER GROUPS TO BE CENTERED ON HOLES.
 Z ENGRAVING TO BE GOTHIC, WHITE FILLED SIZES AS SHOWN BELOW.

LETTER HEIGHT	DEPTH OF STROKE	WIDTH OF STROKE
1/8	.010	.020

NOTICE TO PERSONS RECEIVING THIS DRAWING
 THE TECHNICAL MATERIEL CORPORATION claims proprietary right in the material disclosed herein. This drawing is issued in confidence for engineering information only and may not be reproduced or used to manufacture anything shown hereon without permission from THE TECHNICAL MATERIEL CORPORATION to the user. This drawing is loaned for mutual assistance and is subject to recall at any time.
 Property of:
 THE TECHNICAL MATERIEL CORPORATION
 MAMARONECK, NEW YORK

B	1	"SHEET 1 OF 2" ADDED	10.8.64	12595	la	Q	Q
A	1	40 HOLES ADDED, SEE MS-1410 30C	11.28-62	7747	la	Q	Q
ISSUE	ITEM	CHANGED FROM	DATE	CN. NO.	DRAFTS	CHECKER	ENG. APP.
TOLERANCES		SCALE:					
ALL OTHERS	DEC. DIM. ±	DRILL PUNCH, COMMERCIAL STOCK SIZES AND MANUFACTURERS TOLERANCES ARE NOT INCLUDED.					
	FRAC. DIM. ±						
	ANGULAR DIM. ±						

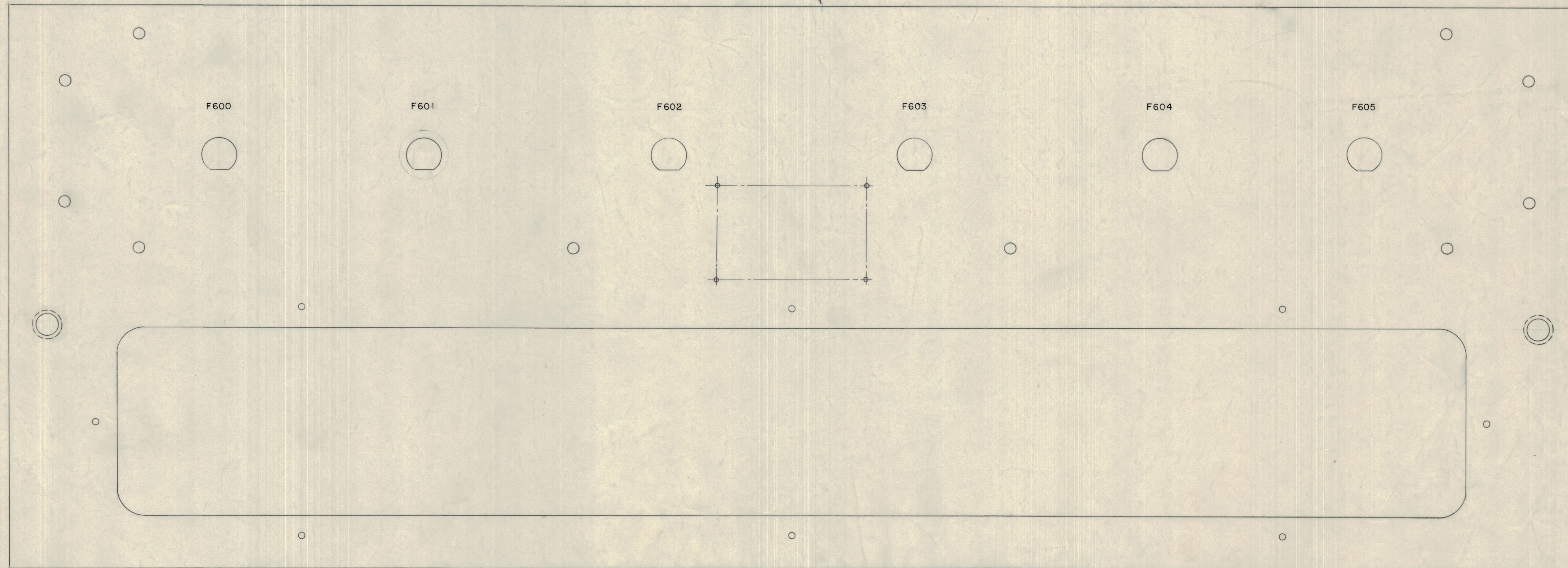
REQ. ITEM		PART NO.	DESCRIPTION	SYMBOL
3/16 THICK			THE TECHNICAL MATERIEL CORP.	
ALUMINUM			MAMARONECK, NEW YORK	
MATERIAL		WEIGHT PER PC.	H.V. RECTIFIER	
TYPE & TEMPER		DRAWN	ELEC. DES. APP.	MECH. DES. APP.
HEAT TREAT. SPEC.		CHECKED	FINAL APPROVAL	
FINISH & SPEC. NO.		SHEET 1 OF 2		LD-491 B

1	GPT-10K	AX-103		1-8-59
REQ PER UNIT	MODEL	PROJECT NO.	ASSY. NO.	DATE
USED ON				

IF IT IS FOUND DESIRABLE TO CHANGE ANY TOLERANCE OR OTHER DETAIL SPECIFIED ON THIS DRAWING NOTIFY THE PURCHASER PROMPTLY.
 MAXIMUM ALLOWABLE TOLERANCES HAVE BEEN DETERMINED AND DEVIATIONS WILL BE CAUSE FOR REJECTION. REMOVE ALL BURRS AND SHARP EDGES

NOTICE TO PERSONS RECEIVING THIS DRAWING
 THE TECHNICAL MATERIEL CORPORATION claims proprietary right in the material disclosed hereon. This drawing is issued in confidence for engineering information only and may not be reproduced or used to manufacture anything shown hereon without permission from THE TECHNICAL MATERIEL CORPORATION to the user. This drawing is loaned for mutual assistance and is subject to recall at any time.
 Property of:
 THE TECHNICAL MATERIEL CORPORATION
 MAMARONECK, NEW YORK

BOTTOM of Unit



REAR VIEW

MARKING PROCESS: AS PER TMC SPEC S-127
 ALL LETTERING TO BE 1/8 HIGH BLACK GOTHIC.

LD491 B

B	1	SH.2 OF 2 ADD. DNG* WAS LD572	10.3.54	12595	HR	D	805
ISSUE	ITEM	CHANGED FROM	DATE	CN. NO.	DRAFTS	CHECKER	ENG. APP.
TOLERANCES		SCALE: FULL					
ALL OTHERS	DEC. DIM. ± FRAC. DIM. ± ANGULAR DIM. ±	DRILL PUNCH COMMERCIAL STOCK SIZES AND MANUFACTURERS TOLERANCES ARE NOT INCLUDED.					

Ref: MS-1410 (machining)

REQ. ITEM	PART NO.	DESCRIPTION	SYMBOL
THE TECHNICAL MATERIEL CORP. MAMARONECK, NEW YORK			
MARKING, FRONT PANEL, REAR			
MATERIAL	WEIGHT PER PC.		
TYPE & TEMPER	PI 5/7/59		
HEAT TREAT. SPEC.	DRAWN	ENEC. DES. APP.	MECH. DES. APP.
	CHECKED	FINAL APPROVAL	
1	GPT-10K	AX-103	5-7-59
REQ PER UNIT	MODEL	PROJECT NO.	DATE
USED ON			
FINISH & SPEC. NO.		SHEET 2 OF 2	LD 491 B