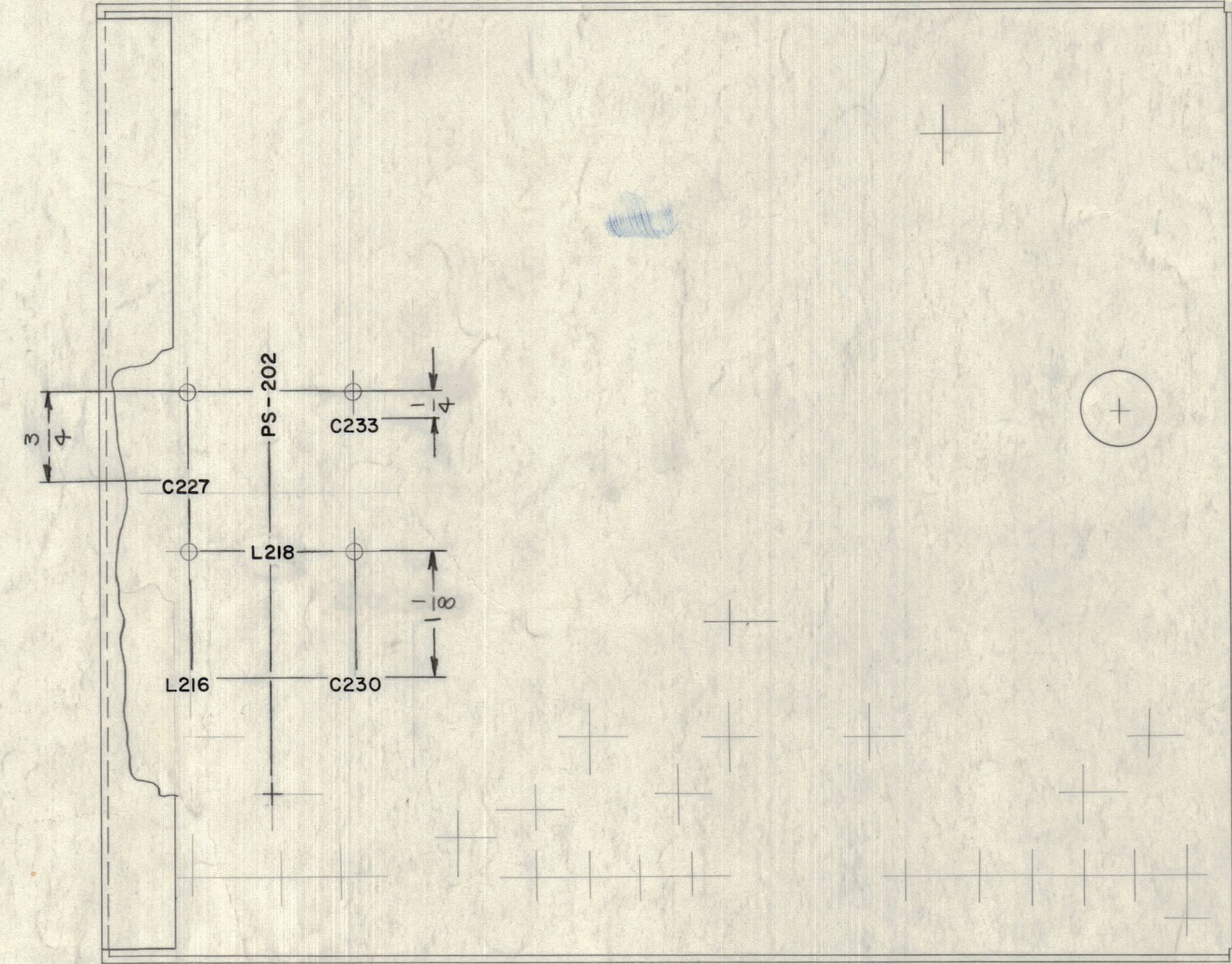
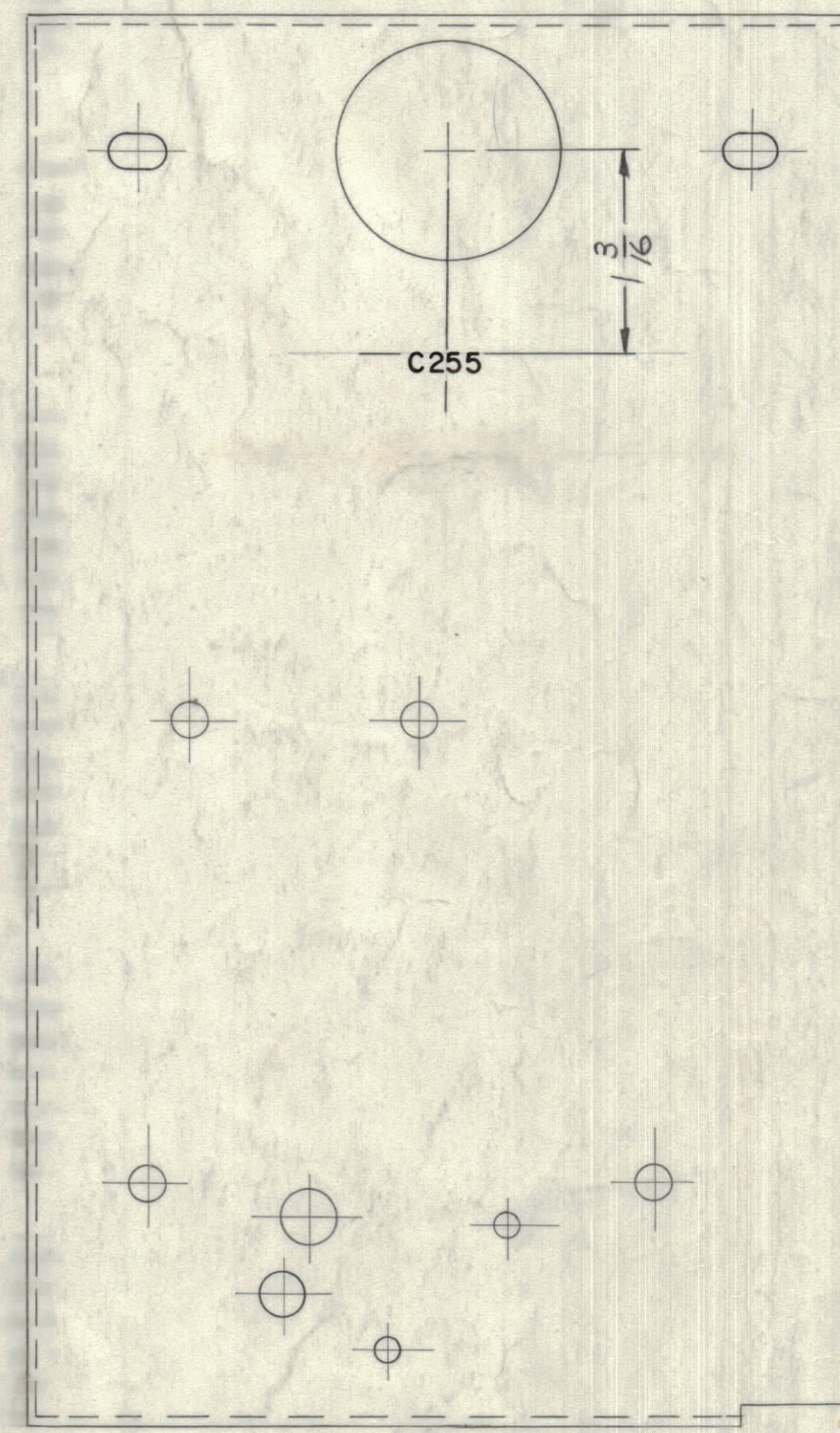
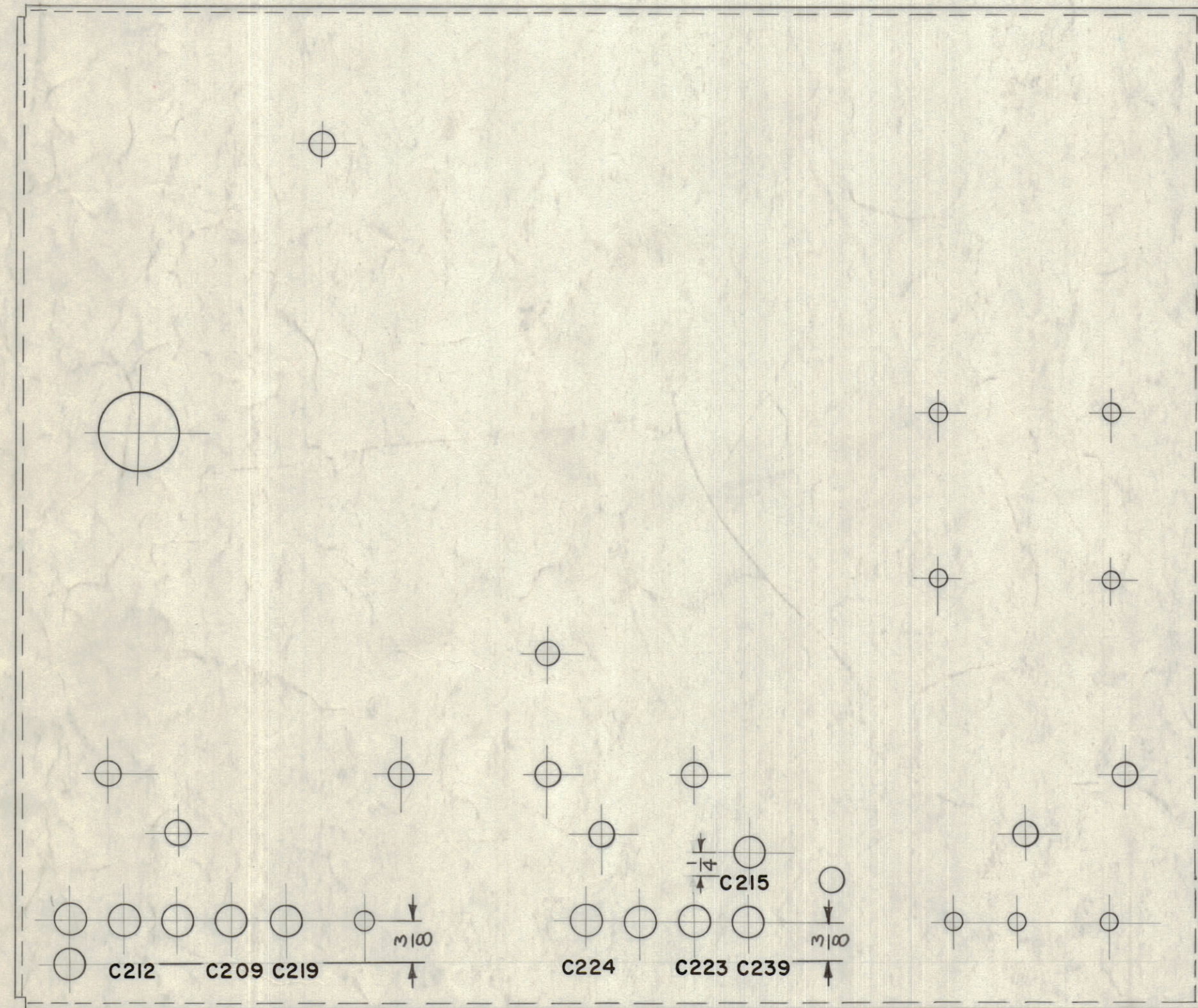


REVISIONS							
ZONE	SYM	DESCRIPTION	DATE	E.M.N. NO.	DRAFT	CHKD	APPD
	D	REVISED DWG (INSIDE VIEW ADDED)	12/26/64	10647			
C310.11	E	LOCATING DIMS. ADDED	8.31.64	12146			
DE 45	F	PICT; L218 WAS L217; L216, C230 & C233 RELOC.	12.31.64	13196			



~ UNLESS OTHERWISE SPECIFIED ~
 1. ALL LETTERING TO BE 1/8 HIGH BLACK GOTHIC
 LOCATE APPROX AS SHOWN ABOUT CENTER LINES
 OF HOLES
 2. MARKING PROCESS: AS PER TMC SPEC. 5727.

LD-486 F

REF: M5-1449(8)

REQ'D.	ITEM	PART NUMBER	DESCRIPTION	SYMBOL
LIST OF MATERIAL				
MATERIAL		THE TECHNICAL MATERIEL CORP. MAMARONECK, NEW YORK		
FINISH		TITLE MARKING, SHIELD, RF MARKING PROCESS: PER TMC SPEC. 5727		
UNLESS OTHERWISE SPECIFIED DIMENSIONS ARE IN INCHES AND INCLUDE CHEMICALLY APPLIED OR PLATED FINISHES		DRAWN	DATE	FINAL APPROVAL
DECIMALS ± .05 XX ± .01 XXX ± .005		CHECKED	DATE	DATE
FRACTIONS ± 1/64 ANGLES ± 0° 30'		ELECT. DES.	DATE	DATE
TOLERANCES		MECH. DES.	DATE	DATE
THE CONTENTS OF THIS DRAWING ARE THE EXCLUSIVE PROPERTY OF THE TECHNICAL MATERIEL CORP. ITS UNAUTHORIZED USE OR REPRODUCTION IN WHOLE OR IN PART IS STRICTLY FORBIDDEN.		DATE	DATE	DATE

QTY./UNIT	MODEL USED ON	ASSY. NO.
1	RFC-1	
1	RFB-1	
SCALE	CODE	
1:1	A	

NOTES