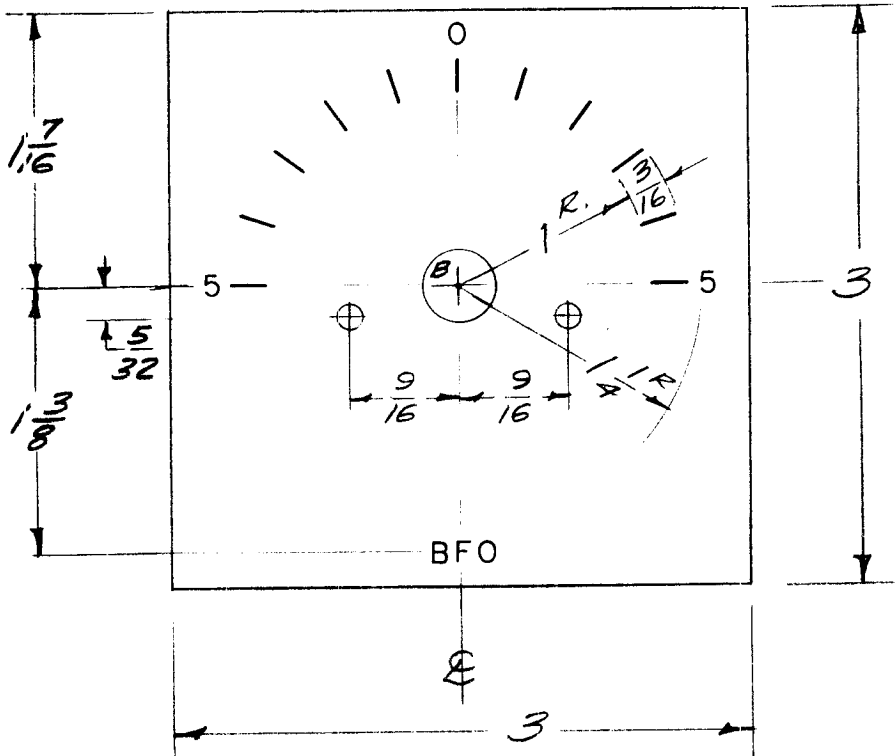


|               |                   |            |      |
|---------------|-------------------|------------|------|
| REQ. PER UNIT | USED ON           |            |      |
|               | MODEL             | ASS'Y. NO. | DATE |
| 1             | R3C-3<br>MOD. KIT |            |      |

LD-458

⊕ Note - Calibration Lines 18° Apart



A -  $\frac{1}{8}$  (.125) D 2 Req  
 B -  $\frac{25}{64}$  (.390) D 1 Req

DIAL TO HAVE ADHESIVE BACKING.

FINISH  
 5101 caustic Dip  
 5114 Zinc Chromate Primer } Front  
 5115 Smooth Grey Enamel } Only

Calibration Lines, Letters, & Numerals to be Engraved, .005 Deep X .015 Wide Stroke, White Filled. Letters & Numerals to be 1/8 high, Gothic

| REQ.               | ITEM | PART NO.          | DESCRIPTION   | SYMBOL    |                |         |           |  |  |
|--------------------|------|-------------------|---|-----------|----------------|---------|-----------|--|--|
|                    |      | 3 x 3 x .020 THK  | THE TECHNICAL MATERIEL CORP.<br>MAMARONECK, NEW YORK  |           |                |         |           |  |  |
|                    |      | STOCK SIZE        |   |           |                |         |           |  |  |
|                    |      | ALUMINUM          |   | DIAL, BFO |                |         |           |  |  |
|                    |      | MATERIAL          |   |           |                |         |           |  |  |
| ISSUE              | ITEM | CHANGED FROM      | DATE  | CH. NO.   | DRAFTS         | CHECKER | ENG. APP. |  |  |
| TOLERANCES         |      |                   | SCALE: FULL   |           |                |         |           |  |  |
| DEC. DIM. ±        |      |                   | MAXIMUM ALLOWABLE TOLERANCES HAVE BEEN DETERMINED AND ANY DEVIATIONS WILL BE CAUSE FOR REJECTION.<br>REMOVE ALL BURRS AND SHARP EDGES |           |                |         |           |  |  |
| FRAC. DIM. ± 1/64  |      |                   |   |           |                |         |           |  |  |
| ANGULAR DIM. ±     |      |                   |   |           |                |         |           |  |  |
| TYPE & TEMPER      |      | HEAT TREAT. SPEC. | DRAWN   | CHECKED   | FINAL APPROVAL |         |           |  |  |
| FINISH & SPEC. NO. |      | ELEC. DES. APP.   | MECH. DES. APP.   | LD-458    |                |         |           |  |  |