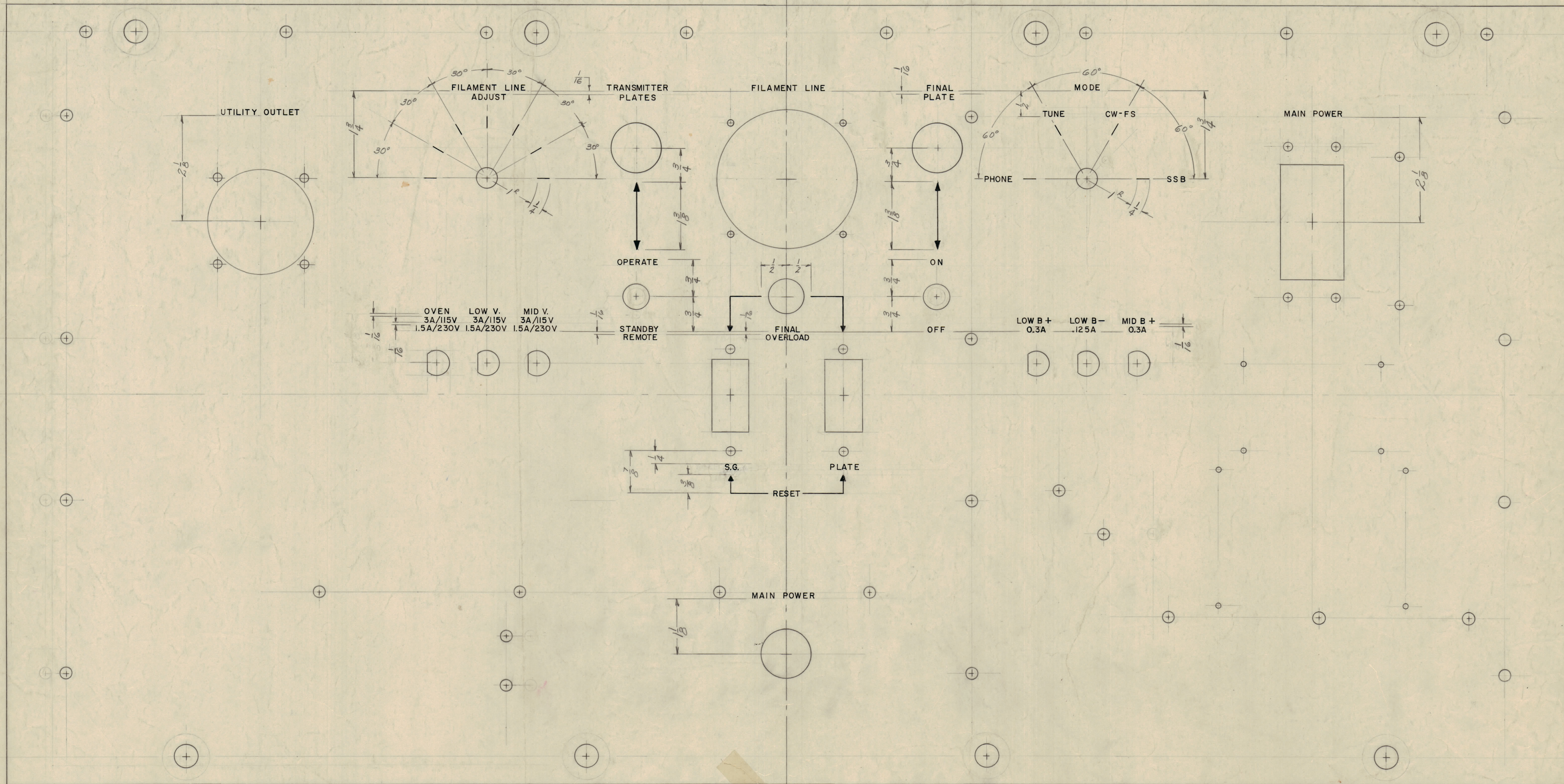


IF IT IS FOUND DESIRABLE TO CHANGE ANY TOLERANCE OR OTHER DETAIL SPECIFIED ON THIS DRAWING NOTIFY THE PURCHASER PROMPTLY.
 MAXIMUM ALLOWABLE TOLERANCES HAVE BEEN DETERMINED AND DEVIATIONS WILL BE CAUSE FOR REJECTION. REMOVE ALL BURRS AND SHARP EDGES



LD 451 A

NOTICE TO PERSONS RECEIVING THIS DRAWING
 THE TECHNICAL MATERIEL CORPORATION claims proprietary right in the material disclosed hereon. This drawing is issued in confidence for engineering information only and may not be reproduced or used to manufacture anything shown hereon without permission from THE TECHNICAL MATERIEL CORPORATION to the user. This drawing is loaned for mutual assistance and is subject to recall at any time.
 Property of:
 THE TECHNICAL MATERIEL CORPORATION
 MAMARONECK, NEW YORK

NOTE:
 ENGRAVING TO BE GOTHIC WHITE FILLED
 LETTER HEIGHT 5/32
 STROKE DEPTH .010
 STROKE WIDTH .020

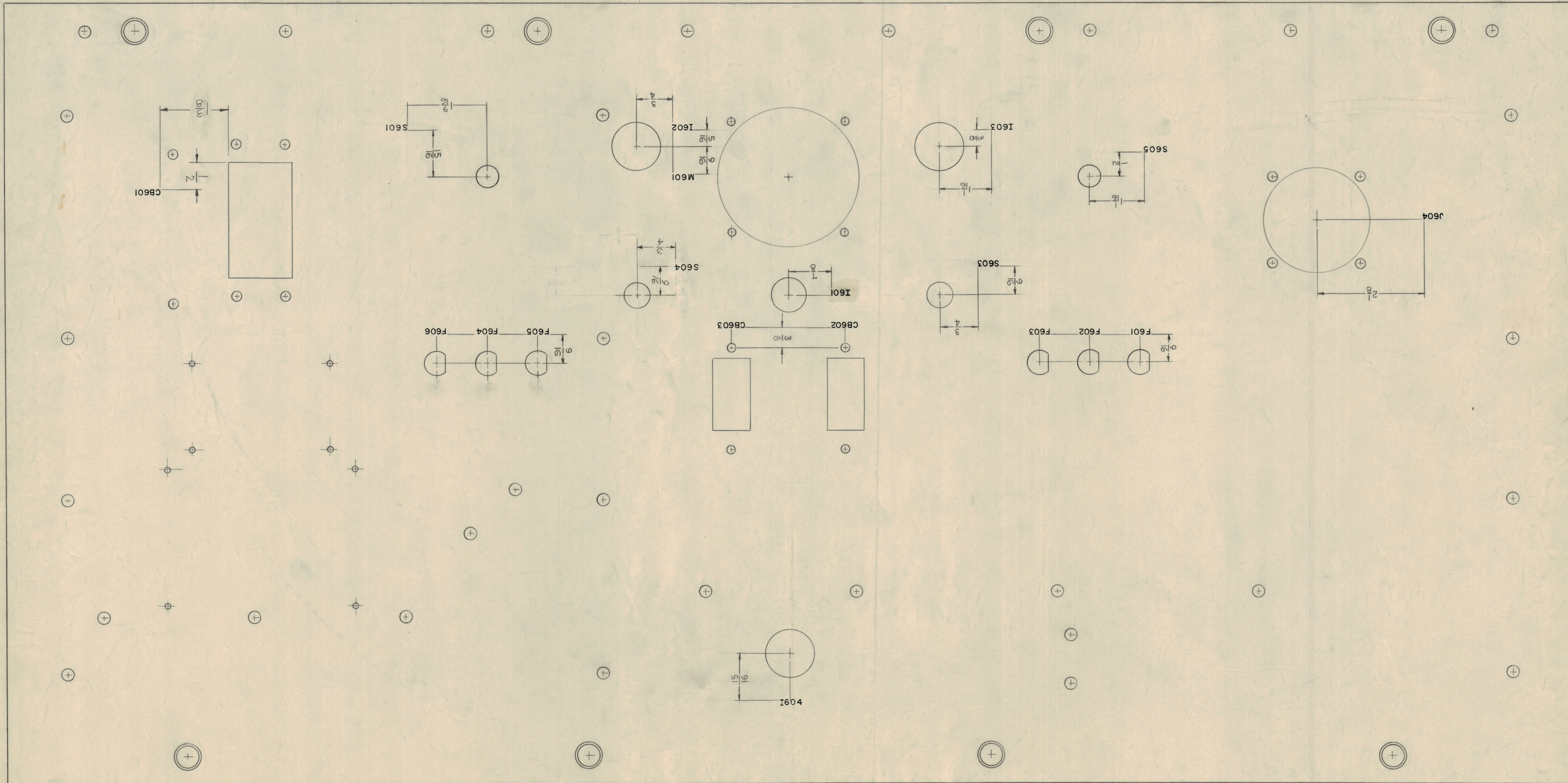
REF: TMC "MS-1351(B)

ISSUE	ITEM	CHANGED FROM	DATE	CN. NO.	DRAFTS	CHECKER	ENG. APP.
A		ADD SHT. 10F2 TO TITLE BLK	11/7/50	20060	GE	W	PCA

REQ. PER UNIT	MODEL	PROJECT NO.	ASSY. NO.	DATE
1	RTP-2			10-14-50

REQ. ITEM	PART NO.	DESCRIPTION	SYMBOL
		THE TECHNICAL MATERIEL CORP. MAMARONECK, NEW YORK	
		FRONT PANEL ENGRAVING	
		RTP-2	
		DRAWN 15/11/50	ELEC. DES. APP. MECH. DES. APP.
		CHECKED	FINAL APPROVAL
			LD 451 SHEET 1 OF 2

IF IT IS FOUND DESIRABLE TO CHANGE ANY TOLERANCE OR OTHER DETAIL SPECIFIED ON THIS DRAWING NOTIFY THE PURCHASER PROMPTLY.
 MAXIMUM ALLOWABLE TOLERANCES HAVE BEEN DETERMINED AND DEVIATIONS WILL BE CAUSE FOR REJECTION. REMOVE ALL BURRS AND SHARP EDGES



LD 451 A

NOTICE TO PERSONS RECEIVING THIS DRAWING
 THE TECHNICAL MATERIEL CORPORATION claims proprietary right in the material disclosed hereon. This drawing is issued in confidence for engineering information only and may not be reproduced or used to manufacture anything shown hereon without permission from THE TECHNICAL MATERIEL CORPORATION to the user. This drawing is loaned for mutual assistance and is subject to recall at any time.
 Property of:
 THE TECHNICAL MATERIEL CORPORATION
 MAMARONECK, NEW YORK

NOTE: LETTERING TO BE 1/8 HIGH BLACK GOTHIC
 MARKING PROCESS: AS PER T.M.C. SPECIFICATION S-727

ISSUE	ITEM	CHANGED FROM	DATE	CH. NO.	DRAFTS	CHECKER	ENGR. APP.
A		CHG. FR. LD. 462 TO LD. 451	11/20/58	20010	GE		

REQ. PER UNIT	MODEL	PROJECT NO.	ASSY. NO.	DATE
1	RTP-2			11-8-58

REQ. ITEM	PART NO.	DESCRIPTION	SYMBOL
		THE TECHNICAL MATERIEL CORP. MAMARONECK, NEW YORK	
		LETTERING, FRONT PANEL, REAR	
		11/2/58	
		DRAWN	ELEC. DES. APP. MECH. DES. APP.
		CHECKED	FINAL APPROVAL
			LD 451 SHEET 2 OF 2 A