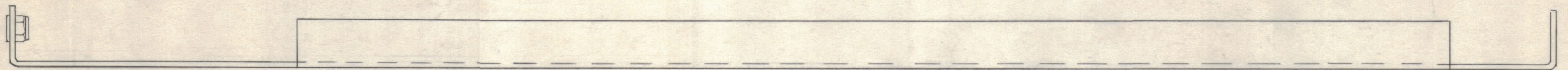
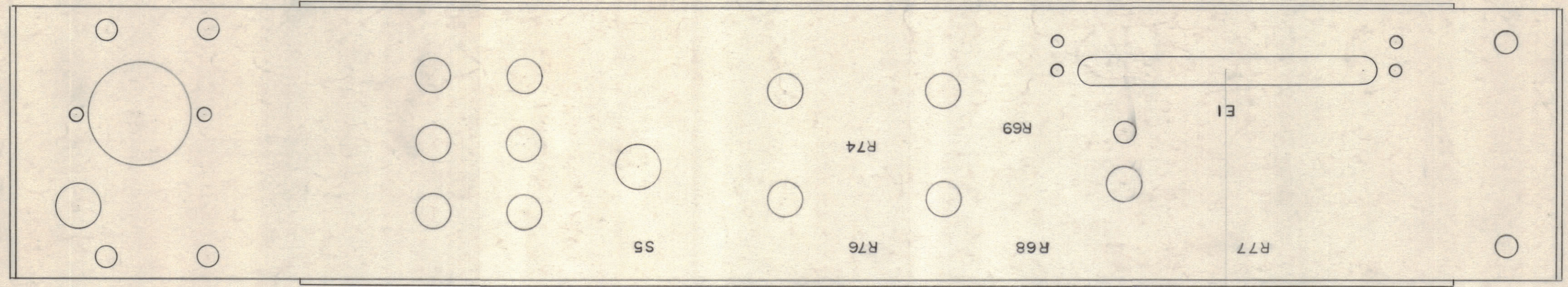
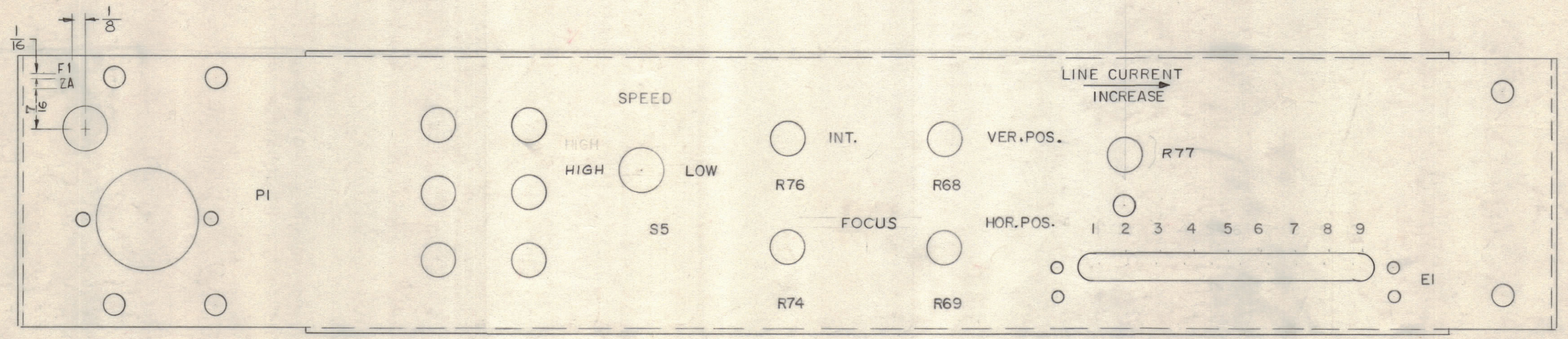


IF IT IS FOUND DESIRABLE TO CHANGE ANY TOLERANCE OR OTHER DETAIL SPECIFIED ON THIS DRAWING NOTIFY THE PURCHASER PROMPTLY.

MAXIMUM ALLOWABLE TOLERANCES HAVE BEEN DETERMINED AND DEVIATIONS WILL BE CAUSE FOR REJECTION. REMOVE ALL BURRS AND SHARP EDGES



LD-413 B



NOTES:

- MARKING PROCESS: AS PER TMC SPEC S-727.
- LETTERING: 1/8 HIGH COPPER PLATE, GOthic NORMAL, LOCATED AS SHOWN.
- COLOR: CLEAR LUSTERLESS BLACK, BAKING SYNTHETIC ENAMEL; FED. STD. 595, TYPE 37038 (BLACK).

REF: TMC # MS-282 (4)

ISSUE	ITEM	CHANGED FROM	DATE	CN. NO.	DRAFTS	CHECKER	ENG. APP.
B	1	(F1) Relocated ZA Added	6-16-61	5067	RU	gcs	[Signature]
A	1	FOCUS ADDED	10-24-58	3245	RU	gcs	[Signature]

TOLERANCES: *do* SCALE: *do*

ALL OTHERS: DEC. DIM. ±, FRAC. DIM. ±, ANGULAR DIM. ±

DRILL, PUNCH, COMMERCIAL STOCK SIZES AND MANUFACTURERS TOLERANCES ARE NOT INCLUDED.

1	MODEL	PROJECT NO.	ASS'Y. NO.	DATE
REQ PER UNIT	1/4 DEL CFA			6-30-58

USED ON

REQ. ITEM	PART NO.	DESCRIPTION	SYMBOL
<i>do</i>		THE TECHNICAL MATERIEL CORP. MAMARONECK, NEW YORK	
<i>do</i>	<i>do</i>	LETTERING, CHASSIS	
<i>do</i>		REAR ELEMENT	
<i>do</i>		TYPE & TEMPER	
<i>do</i>		HEAT TREAT. SPEC.	
<i>do</i>		FINISH & SPEC. NO.	

6-30-58

CHECKED: [Signature] FINAL APPROVAL: [Signature]

LD-413 B

IRIDITE