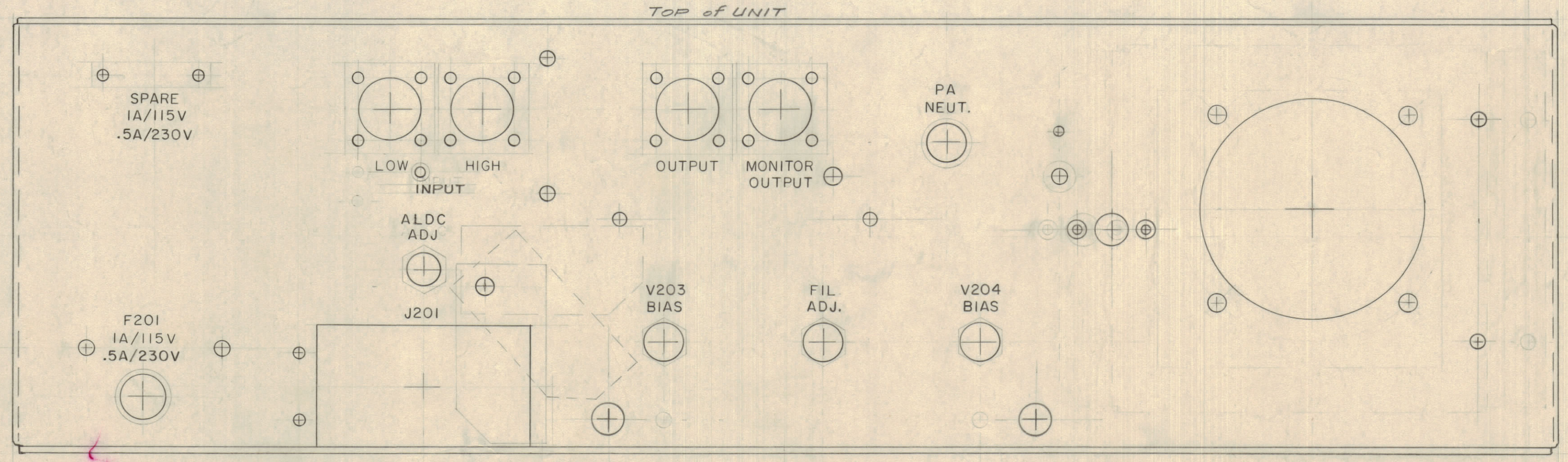
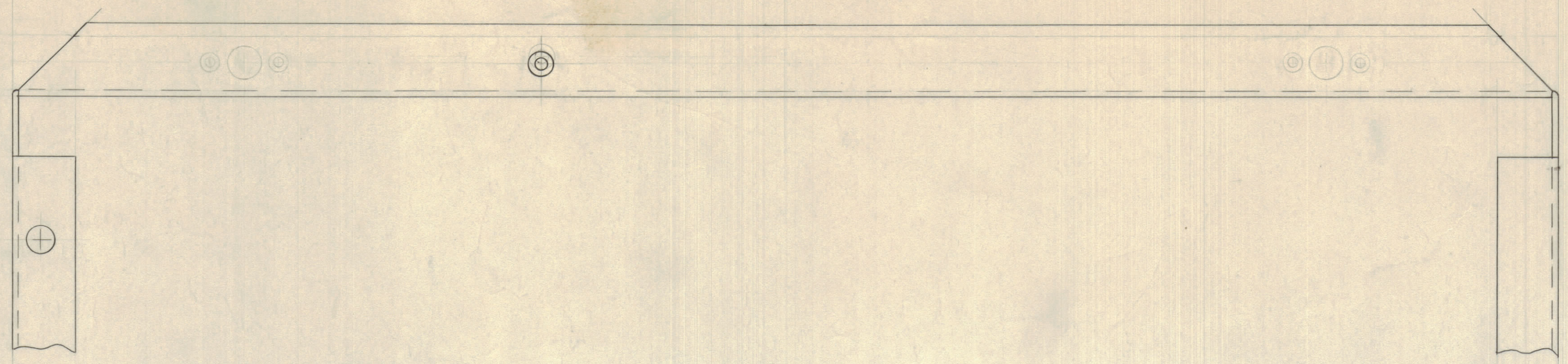
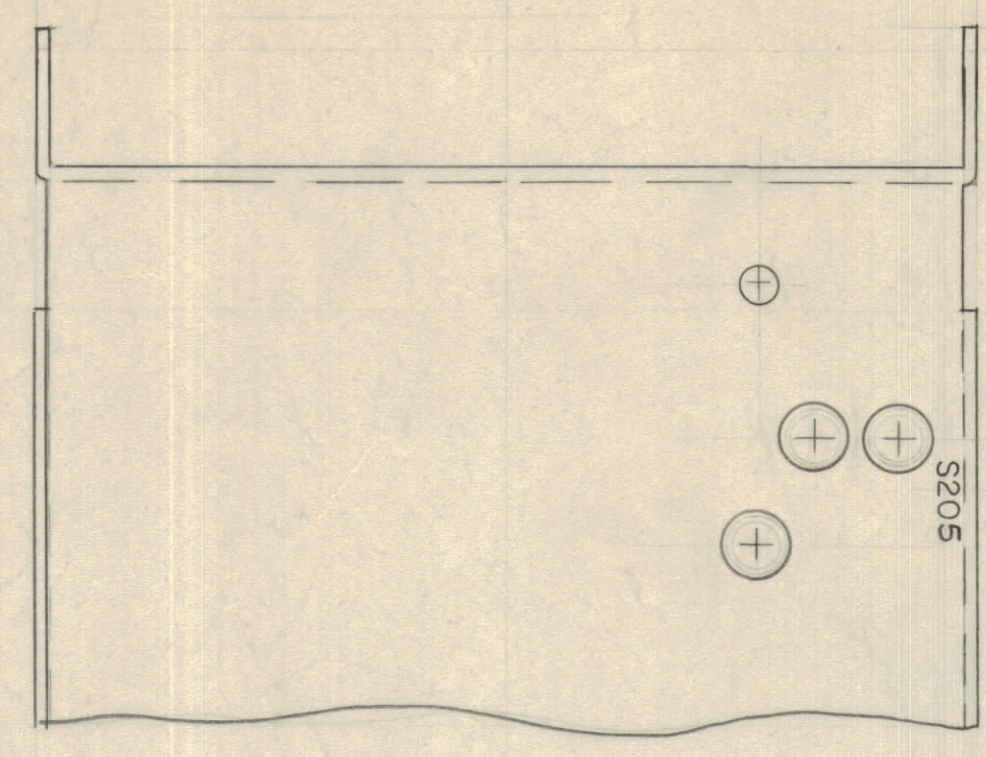


IF IT IS FOUND DESIRABLE TO CHANGE ANY TOLERANCE OR OTHER DETAIL SPECIFIED ON THIS DRAWING NOTIFY THE PURCHASER PROMPTLY.
 MAXIMUM ALLOWABLE TOLERANCES HAVE BEEN DETERMINED AND DEVIATIONS WILL BE CAUSE FOR REJECTION. REMOVE ALL BURRS AND SHARP EDGES

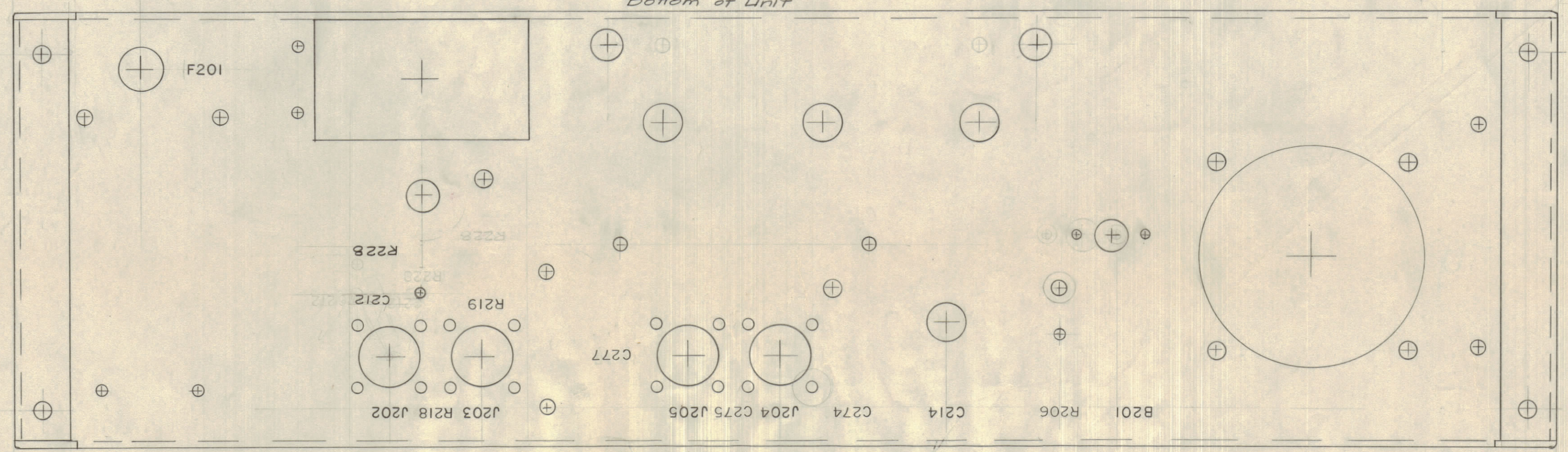
NOTICE TO PERSONS RECEIVING THIS DRAWING
 THE TECHNICAL MATERIEL CORPORATION claims proprietary right in the material disclosed hereon. This drawing is issued in confidence for engineering information only and may not be reproduced or used to manufacture anything shown hereon without permission from THE TECHNICAL MATERIEL CORPORATION to the user. This drawing is loaned for mutual assistance and is subject to recall at any time.
 Property of:
 THE TECHNICAL MATERIEL CORPORATION
 MAMARONECK, NEW YORK



REAR VIEW, OUTSIDE



Bottom of Unit



FRONT VIEW, INSIDE

All Lettering to be 1/8 high black Gothic.

3	"R228 MOVED"	7/1/58	104	16	WJG	APP
2	"C212 MOVED"					
1	"INPUT MOVED"					
ISSUE	CHANGED FROM	DATE	GN. NO.	DRAFTS	CHECKER	ENG. APP.
TOLERANCES		SCALE: FULL				
ALL	DEC. DIM. ±	DRILL, PUNCH, COMMERCIAL STOCK				
OTHERS	FRAC. DIM. ±	SIZES AND MANUFACTURERS				
	ANGULAR DIM. ±	TOLERANCES ARE NOT INCLUDED.				

1	RFA-1	PAL-350	6/3/58
REQ PER UNIT	MODEL	PROJECT NO.	DATE
		ASSY. NO.	
USED ON			

REQ. ITEM	PART NO.	DESCRIPTION	SYMBOL
STOCK SIZE		THE TECHNICAL MATERIEL CORP. MAMARONECK, NEW YORK	
MATERIAL		LETTERING, WRAPAROUND	
WEIGHT PER PC.			
TYPE & TEMPER		6/3/58	TRFB
DRAWN		ELEC. DES. APP.	MECH. DES. APP.
HEAT TREAT. SPEC.		CHECKED	FINAL APPROVAL
FINISH & SPEC. NO.			LD-407 A

LD-407 A